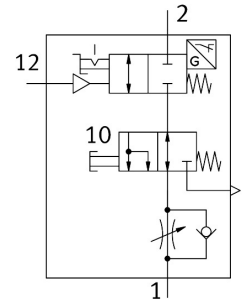


# Shut-off valve VBOC-L2-E-S7-P-M8-G38-E

Part number: 8177466

**FESTO**



## Data sheet

Feature	Value
Valve function	2/2-way, closed, monostable
Selection of additional functions	Exhaust air one-way flow control function
Pneumatic connection, port 1	G3/8
Pneumatic connection, port 2	G3/8
Type of actuation	Pneumatic
Type of mounting	Screw-in Via male thread
Nominal flow rate in throttle direction normalised according to ISO 8778	430 l/min
Nominal flow rate in non-return direction normalised according to ISO 8778	640 l/min...730 l/min
Standard flow rate in throttle direction at 0.6->0 MPa (6->0 bar, 87->0 psi) according to ISO 8778	670 l/min
Standard flow rate in non-return direction at 0.6->0 MPa (6->0 bar, 87->0 psi) according to ISO 8778	1080 l/min...1250 l/min
Operating pressure	0.05 MPa...1 MPa 0.5 bar...10 bar
Ambient temperature	-5 °C...60 °C
Operating medium	Compressed air to ISO 8573-1:2010 [7:4:4]
CE mark (see declaration of conformity)	To EU EMC Directive In accordance with EU RoHS Directive
UKCA marking (see declaration of conformity)	To UK instructions for EMC To UK RoHS instructions
Mounting position	optional
Selection of additional function 2	Manually exhausted
Special characteristics	Resistant to welding spatter
Type of seal on screwed plug	Sealing ring
Manual override	Detenting
Type of reset	Mechanical spring
Pilot air supply	External
Manual exhaust function	Non-detenting

Feature	Value
Measuring principle	Inductive
Switching element function	N/C contact
Rotatability	360°/no continuous swivelling permissible
Reverse polarity protection sensor	For all electrical connections
Note on forced dynamization	Current information on this topic can be found in Technical Report V
Switching position sensing	Normal position via sensor
Switch-off pressure	0.05 MPa...0.2 MPa
Switch-on pressure	0.15 MPa...0.4 MPa
Pneumatic off range	0.04 MPa
Pilot pressure	0.1 MPa...1 MPa 1 bar...10 bar 14.5 psi...145 psi
Switching time off	25 ms
Switching time on	10 ms
Nominal operating voltage DC	24 V
Switching output	PNP
Note on operating and pilot medium	Lubricated operation possible (in which case lubricated operation will always be required)
Corrosion resistance class CRC	2 - Moderate corrosion stress
LABS (PWIS) conformity	VDMA24364 zone III
Suitability for the production of Li-ion batteries	Suitable for battery production according to the Festo internal definition of the degree of severity F1A with restrictions regarding the use of Cu/Zn/Ni
Media temperature	-5 °C...60 °C
Pilot medium	Compressed air to ISO 8573-1:2010 [7:4:4]
Nominal torque	13 Nm
Tolerance for nominal tightening torque	± 20%
Permissible actuation moment, regulating screw	2.5 Nm
Product weight	209 g
Operating voltage range, DC sensor	10 V...30 V
Short-circuit strength sensor	Yes
Idle current sensor	10 mA
Max. output current sensor	200 mA
Voltage drop sensor	3 V
Electrical connection 1, function	Switching output
Electrical connection 1, connection type	Cable with plug
Electrical connection 1, connector system	M8x1, A-coded, to EN 61076-2-104
Electrical connection 1, number of connections/cores	3
Electrical connection 1, used connections/cores	3
Cable length	0.3 m
Pilot air port 12	G1/8
Note on materials	RoHS-compliant
Material seals	HNBR NBR TPE-U(PU)
Material hollow bolt	Wrought aluminium alloy
Material cable sheath	PVC
Knurled nut material	Wrought aluminium alloy
Material adjusting screw	High-alloy stainless steel
Material swivel fitting	Wrought aluminium alloy
Material sensor bracket	High-alloy stainless steel
Locking nut material	High-alloy stainless steel