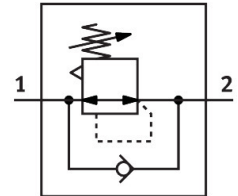


# Pressure regulator MS6-LR-1/2-D6-A8-F1A-B

Part number: 8175352

**FESTO**



## Data sheet

Feature	Value
Size	6
Series	MS
Actuator lock	Rotary knob with detent
Mounting position	optional
Design	Pressure regulator without pressure gauge Directly actuated piston regulator
Controller function	Output pressure constant With secondary venting With return flow function
Pressure gauge (ANALOG) or Pressure display (DIGITAL)	Prepared for G1/8
Operating pressure	0.1 MPa...1 MPa 1 bar...10 bar
Pressure regulation range	0.3 bar...7 bar
Max. pressure hysteresis	0.035 MPa 0.35 bar 5.075 psi
Standard nominal flow rate (standardised to DIN 1343)	6000 l/min
Operating medium	Compressed air to ISO 8573-1:2010 [7:4:4] Inert gases
Note on operating and pilot medium	Lubricated operation possible (in which case lubricated operation will always be required)
Corrosion resistance class CRC	1 - Low corrosion stress
LABS (PWIS) conformity	VDMA24364-B1/B2-L
Suitability for the production of Li-ion batteries	Product corresponds to the internal product definition from Festo for use in battery production: Metals with more than 1% by mass of copper, zinc or nickel are excluded from use. The exceptions are nickel in steel, chemically nickel-plated surfaces, printed circuit boards, cables, electrical plug connectors and coils
Cleanroom class	Class 7 according to ISO 14644-1
Storage temperature	-5 °C...50 °C
Media temperature	-5 °C...50 °C
Ambient temperature	-5 °C...50 °C
Product weight	479 g

Feature	Value
Type of mounting	Front panel mounting In-line installation With accessories Either:
Pneumatic connection, port 1	G1/2
Pneumatic connection, port 2	G1/2
Note on materials	RoHS-compliant
Material underneath cover	PA
Material seals	NBR
Material rotary knob	POM
Material spring	High-alloy stainless steel
Material housing	PA-reinforced
Material valve stem	POM