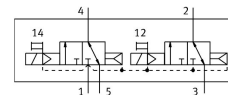
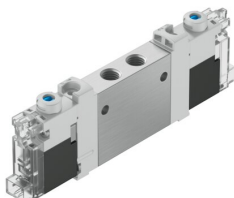


# Solenoid valve

## VUVG-LK10-T32C-AT-M7-1H2L-F1A

Part number: 8173202

**FESTO**



## Data sheet

Feature	Value
Valve function	2x3/2-way, monostable, closed
Type of actuation	Electric
Valve size	10 mm
Standard nominal flow rate (standardised to DIN 1343)	280 l/min
pneumatic working port	M7
Operating voltage	24V DC
Operating pressure	0.15 MPa...0.7 MPa 1.5 bar...7 bar
Design	Piston slide with sealing ring
Type of reset	Pneumatic spring
Approval	c UL us - Recognized (OL)
Certificate issuing authority	UL MH19482
Degree of protection	IP40
Exhaust-air function	With flow control option
Sealing principle	Soft
Mounting position	optional
Manual override	Detenting Non-detenting
Type of piloting	Pilot actuated
Pilot air supply	Internal
Flow direction	Non-reversible
lap	Overlap
Signal status display	LED
Max. switching frequency	2 Hz
Switching time off	14 ms
Switching time on	12 ms
Duty cycle	100%
Max. positive test pulse with 0 signal	1600 µs
Max. negative test pulse with 1 signal	3000 µs
Characteristic coil data	24 V DC: 0.8 W
Permissible voltage fluctuations	+/- 10 %
Operating medium	Compressed air to ISO 8573-1:2010 [7:4:4]

Feature	Value
Note on operating and pilot medium	Lubricated operation possible (in which case lubricated operation will always be required)
Vibration resistance	Transport application test with severity level 1 to FN 942017-4 and EN 60068-2-6
Shock resistance	Shock test with severity level 1 to FN 942017-5 and EN 60068-2-27
Corrosion resistance class CRC	0 - No corrosion stress
LABS (PWIS) conformity	VDMA24364 zone III
Suitability for the production of Li-ion batteries	Suitable for battery production with reduced Cu/Zn/Ni values (F1a)
Cleanroom suitability, measured according to ISO 14644-14	Class 6 according to ISO 14644-1
Media temperature	-5 °C...50 °C
Pilot medium	Compressed air to ISO 8573-1:2010 [7:4:4]
Ambient temperature	-5 °C...50 °C
Product weight	55 g
Electrical connection	2-pin Plug pattern H, horizontal connection Plugs
Type of mounting	Either: On manifold rail With through-hole
Pneumatic connection, port 2	M7
Pneumatic connection, port 4	M7
Note on materials	RoHS-compliant
Material seals	HNBR NBR
Material housing	Wrought aluminium alloy