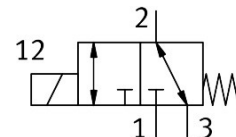


# Media separated solenoid valve VYKC-F16-M32-16-PE-H2

Part number: 817 2704

**FESTO**



## Data sheet

Feature	Value
Design	Electrical connection at the side Rocker valve with diaphragm seal
Sealing principle	Soft
Material in contact with the medium	EPDM PEEK
Suitable for use with food	See supplementary material information
Valve function	3/2-way, monostable, open/closed
Nominal size	1.6 mm
Flow direction	Reversible
Type of actuation	Electric
Type of piloting	Direct
Type of reset	Mechanical spring
Manual override	None
Mounting position	optional
Type of mounting	With through-hole for M2.5 screw
Electrical connection 1, connection type	Cable with plug
Electrical connection 1, connector system	Connection pattern H
Size	16
Grid dimension	17 mm
Fluid connection	Flange
Medium	Liquid media Gaseous media
Note on the medium	Observe resistance of materials that come into contact with the media Maximum particle size 5 µm
Internal volume	59 µl fluid chamber valve 94 µl valve with fl. conn.
Media temperature	10 °C...50 °C
Media temperature for fluids	10 °C...50 °C
Ambient temperature	10 °C...50 °C
Storage temperature	-20 °C...70 °C
Medium pressure	-0.075 MPa...0.3 MPa -0.75 bar...3 bar -10.875 psi...43.5 psi

Feature	Value
Burst pressure	2 MPa 20 bar 290 psi
Total leakage	4 ml/h
Operational voltage range DC	12 V...24 V
Note on operational voltage range DC	Holding current reduction necessary
Characteristic coil data	12 - 24 V DC: low-current phase 1.4 W, high-current phase 5.5 W
Insulation material class	B
Duty cycle	100% in conjunction with holding current reduction Observe the notes on operating the solenoid valves.
Max. switching frequency	4 Hz
Note on switching frequency	Dependent on the ambient temperature and installation state
Switch-on time for fluids	20 ms
Switching time on gaseous media	11 ms
Switch-off time for fluids	15 ms
Switching time off gaseous media	3 ms
Standard nominal flow rate (standardised to DIN 1343)	46 l/min
Note on standard nominal flow rate	In case of a pressure drop of 1 -> 0 bar (gaseous media)
Flow rate Kv	0.026 m <sup>3</sup> /h 0.44 l/min
Note on flow rate Kv	For medium water Pressure difference 1 bar
Water flow rate at max. operating pressure	0.066 m <sup>3</sup> /h 1.1 l/min
Material housing	PEEK
Material membrane	EPDM
Material seals	EPDM
Note on materials	RoHS-compliant
LABS (PWIS) conformity	VDMA24364 zone III
Product weight	50 g
Degree of protection	IP40
Note on degree of protection	In assembled state
Instructions on use	For indoor use only
Corrosion resistance class CRC	0 - No corrosion stress
CE mark (see declaration of conformity)	In accordance with EU RoHS Directive
UKCA marking (see declaration of conformity)	To UK RoHS instructions