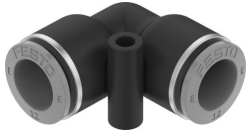


# Push-in L-connector NPQE-L-Q12-E-P10

Part number: 8113132

FESTO



## Data sheet

| Feature                                       | Value  |
|---|--|
| Size  | Standard   |
| Nominal size                                  | 10 mm  |
| Mounting position                             | optional   |
| Design  | L-shape<br>Push-pull principle                                     |
| Size of pack                                  | 10   |
| Operating pressure complete temperature range | -0.095 MPa...0.8 MPa<br>-0.95 bar...8 bar<br>-13.775 psi...116 psi |
| Operating medium                              | Compressed air to ISO 8573-1:2010 [7:4:4]                          |
| Note on operating and pilot medium            | Lubricated operation possible                                      |
| Corrosion resistance class CRC                | 1 - Low corrosion stress   |
| LABS (PWIS) conformity                        | VDMA24364 zone III   |
| Cleanroom class                               | Class 4 according to ISO 14644-1                                   |
| Ambient temperature                           | -5 °C...60 °C  |
| Product weight                                | 17.96 g  |
| Pneumatic connection, port 1                  | For tubing outer diameter of 12 mm                                 |
| Pneumatic connection, port 2                  | For tubing outer diameter of 12 mm                                 |
| Colour of release ring                        | Blue   |
| Note on materials                             | RoHS-compliant   |
| Material housing                              | PBT  |
| Material release ring                         | POM  |
| Material tubing seal                          | NBR  |
| Material tubing clamp component               | Stainless steel  |