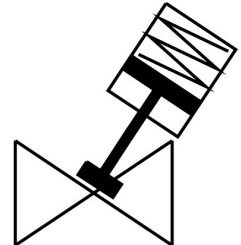


Angle seat valve VZX-A-TS6-50-M6-B1T-8-K-75-20-PR-PM

Part number: 8111588

FESTO



Data sheet

Feature	Value
Design	Poppet valve with piston drive
Type of actuation	Pneumatic
Mounting position	optional
Type of mounting	In-line installation
Line connection	Threaded coupling G2 to DIN ISO 228
Valve function	2/2
Flow direction	Non-reversible
Medium pressure	0 MPa...0.8 MPa 0 bar...8 bar
Type of reset	Mechanical spring
Type of piloting	Externally controlled
Pneumatic connection	Female thread G1/8
Operating pressure	0.5 MPa...0.7 MPa 5 bar...7 bar 72.5 psi...101.5 psi
Medium	Vapour Inert gases Filtered compressed air, grade of filtration 200 µm
Direction of flow	Above valve seat, for gaseous media
Control of medium	On/off operation
Operating medium	Compressed air to ISO 8573-1:2010 [7:4:4]
Max. viscosity	600 mm²/s
Media temperature	-10 °C...60 °C
Ambient temperature	0 °C...60 °C
Flow rate Kv	40.1 m³/h
Outdoor applications	Weather-protected application areas Class C1 based on IEC 60654-1
Note on materials	RoHS-compliant
LABS (PWIS) conformity	VDMA24364 zone III
Material process valve housing	Brass
Material number process valve housing	CW724R

Feature	Value
Material seals	FPM
Material spindle seal	PTFE
Material seat seal	PTFE
Product weight	4627 g
CE mark (see declaration of conformity)	In accordance with EU Pressure Equipment Directive
UKCA marking (see declaration of conformity)	to UK Pressure Equipment Regulations
Size of drive	75 mm
Stroke	20 mm
Control function	Closed via reduced spring force, N/C
Position detection	Via mechanical indicator
Material drive housing	PA-reinforced
Storage temperature	-10 °C...60 °C
Degree of protection	IP65 IP67
Material piston rod	High-alloy stainless steel
Material cover	PA-reinforced