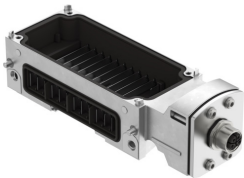


Interlinking block
CPX-M-GE-EV-W-M12-5POL
Part number: 8098391



Data sheet

Feature	Value
Type of mounting	Angled fitting
Product weight	266 g
Corrosion resistance class CRC	0 - No corrosion stress
LABS (PWIS) conformity	VDMA24364-B2-L
Approval	c UL - Recognized (OL)
Note on materials	RoHS-compliant
Material housing	Die-cast aluminium
Electrical connection	5-pin Socket L-coded M12x1
Max. power supply	16 A
Power supply	System forwarding