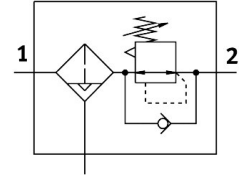


Filter regulator MS6-LFR-1/2-D6-E-P-VC-A8-B

Part number: 8098306

FESTO



Data sheet

Feature	Value
Size	6
Series	MS
Actuator lock	Rotary knob with detent
Mounting position	Vertical +/-5°
Grade of filtration	40 µm
Condensate drain	Fully automatic Manual, non-detenting
Design	Filter regulator without pressure gauge Directly actuated piston regulator
Max. condensate volume	27.3 ml
Controller function	Output pressure constant With secondary venting With return flow function
Degree of condensate separation	75 %
Pressure gauge (ANALOG) or Pressure display (DIGITAL)	Prepared for G1/8
Operating pressure	0.2 MPa...1 MPa 2 bar...10 bar
Pressure regulation range	0.3 bar...7 bar
Max. pressure hysteresis	0.035 MPa 0.35 bar 5.075 psi
Standard nominal flow rate (standardised to DIN 1343)	5300 l/min
Operating medium	Compressed air to ISO 8573-1:2010 [7:4:4] Inert gases
Note on operating and pilot medium	Compatibility with ester oil not guaranteed
Corrosion resistance class CRC	1 - Low corrosion stress
LABS (PWIS) conformity	VDMA24364-B1/B2-L
Cleanroom suitability, measured according to ISO 14644-14	Class 7 according to ISO 14644-1
Storage temperature	-5 °C...50 °C
Air purity class at output	Compressed air to ISO 8573-1:2010 [7:4:4]
Media temperature	5 °C...50 °C
Ambient temperature	5 °C...50 °C
Pore size	40 µm

Feature	Value
Product weight	585 g
Type of mounting	Either: Front panel mounting In-line installation With accessories
Pneumatic connection, port 1	G1/2
Pneumatic connection, port 2	G1/2
Note on materials	RoHS-compliant
Material seals	NBR
Material rotary knob	POM
Material spring	High-alloy steel Galvanised steel
Material filter	PE
Material housing	PA-reinforced
Material bowl	PC
Material valve stem	POM