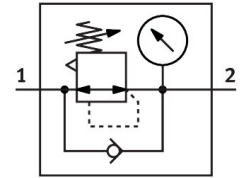


Pressure regulator VRPA-LM-R18-Q8

Part number: 8086011

FESTO



Data sheet

Feature	Value
Controller function	Output pressure constant With secondary venting With return flow function
Pneumatic connection, port 1	R1/8
Pneumatic connection, port 2	QS-8
Type of mounting	Screw-in
Standard nominal flow rate (standardised to DIN 1343)	110 l/min
Ambient temperature	0 °C...60 °C
Material housing	PBT
Operating medium	Compressed air to ISO 8573-1:2010 [7:4:4]
Mounting position	optional
Type of actuation	Manual
Type of seal on screwed plug	Coating
Adjustment component	Rotary knob with detent
Rotatability	360°/no continuous swivelling permissible
Pressure gauge (ANALOG) or Pressure display (DIGITAL)	With pressure gauge
Pressure regulation range	0.1 MPa...0.8 MPa 1 bar...8 bar 14.5 psi...116 psi
Note on operating and pilot medium	Lubricated operation possible (in which case lubricated operation will always be required)
LABS (PWIS) conformity	VDMA24364-B2-L
Cleanroom suitability, measured according to ISO 14644-14	Class 4 according to ISO 14644-1
Product weight	31 g
Material screwed plug	Nickel-plated brass
Note on materials	RoHS-compliant
Material thread seal	PTFE
Material static seals	NBR