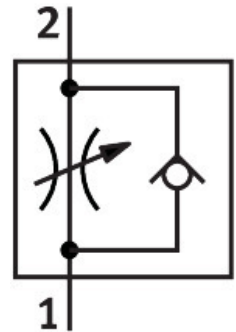


One-way flow control valve VFOE-LS-T-M7-Q4

Part number: 8068745

FESTO



Data sheet

Feature	Value
Valve function	Supply air one-way flow control function
Pneumatic connection, port 1	QS-4
Pneumatic connection, port 2	M7
Type of actuation	Manual
Adjustment component	Rotary knob with detent
Type of mounting	Screw-in
Standard nominal flow rate in flow control direction	85 l/min
Standard nominal flow rate in blocked direction	50 l/min...90 l/min
Ambient temperature	-10 °C...60 °C
Material housing	PBT
Mounting position	optional
Width across flats	9 mm
Rotatability	360°/no continuous swivelling permissible
Operating pressure complete temperature range	0.02 MPa...1 MPa 0.2 bar...10 bar 2.9 psi...145 psi
Standard flow rate in flow control direction 0.6->0 MPa (6->0 bar, 87->0 psi)	135 l/min
Standard flow rate in non-return direction 0.6->0 MPa (6->0 bar, 87->0 psi)	130 l/min...160 l/min
Operating medium	Compressed air to ISO 8573-1:2010 [7:4:4]
Note on operating and pilot medium	Lubricated operation possible (in which case lubricated operation will always be required)
LABS (PWIS) conformity	VDMA24364 zone III
Cleanroom class	Class 4 according to ISO 14644-1
Media temperature	-10 °C...60 °C
Max. tightening torque	3.6 Nm

Feature	Value
Nominal torque	3 Nm
Tolerance for nominal tightening torque	± 20%
Product weight	4 g
Note on materials	RoHS-compliant
Material cover	PBT
Material dynamic seals	HNBR
Material threaded bolt	Galvanised steel
Material release ring	PBT
Material static seals	NBR