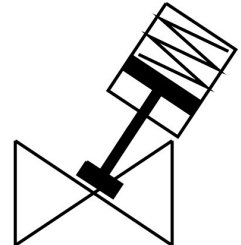


# Angle seat valve VZX-A-TS6-20-M2-V13T-16-K-75-20-PR-V4

Part number: 8060514

**FESTO**



## Data sheet

Feature	Value
Design	Poppet valve with piston drive
Type of actuation	Pneumatic
Mounting position	optional
Type of mounting	In-line installation
Line connection	Threaded coupling G3/4 to DIN ISO 228
Valve function	2/2
Flow direction	Non-reversible
Medium pressure	0 MPa...1.6 MPa 0 bar...16 bar
Type of reset	Mechanical spring
Type of piloting	Externally controlled
Pneumatic connection	Female thread G1/8
Operating pressure	0.5 MPa...1 MPa 5 bar...10 bar 72.5 psi...145 psi
Medium	Vapour Inert gases Filtered compressed air, grade of filtration 200 µm
Direction of flow	Above valve seat, for gaseous media
Control of medium	On/off operation
Operating medium	Compressed air to ISO 8573-1:2010 [7:4:4]
Max. viscosity	600 mm²/s
Media temperature	-10 °C...180 °C
Ambient temperature	0 °C...60 °C
Flow rate Kv	14.5 m³/h
Outdoor applications	Weather-protected application areas Class C1 based on IEC 60654-1
Note on materials	RoHS-compliant
LABS (PWIS) conformity	VDMA24364 zone III
Material process valve housing	Stainless steel casting
Material number process valve housing	1.4409

Feature	Value
Material seals	FPM
Material spindle seal	PTFE
Material seat seal	PTFE
Product weight	3155 g
Approval	CRN
Explosion protection	Zone 1 (ATEX) Zone 2 (ATEX) Zone 21 (ATEX) Zone 22 (ATEX)
Certificate issuing authority	TÜV 968/V 1039.01/20
Safety Integrity Level (SIL)	SIL 2
Probability of Failure per Hour (PFH)	1.36E-07
Probability of Failure on Demand (PFD)	0.000595
Size of drive	75 mm
Stroke	20 mm
Control function	Closed via reduced spring force, N/C
Position detection	Via mechanical indicator
Material drive housing	Stainless steel casting
Material number drive housing	1.4408
Storage temperature	-10 °C...60 °C
Degree of protection	IP65 IP67
Material piston rod	High-alloy stainless steel
Material cover	Stainless steel casting