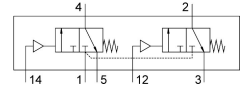


# Pneumatic valve VSPA-B-T32C-M-D1

Part number: 8033644

**FESTO**



## Data sheet

| Feature  | Value  |
|--|--|
| Valve function                                       | 2x3/2-way, monostable, closed  |
| Type of actuation                                    | Pneumatic  |
| Construction width                                   | 42 mm  |
| Nominal flow rate standardised according to ISO 8778 | 1400 l/min   |
| pneumatic working port                               | Sub-base size 1 to ISO 5599-1  |
| Operating pressure                                   | -0.09 MPa...1 MPa<br>-0.9 bar...10 bar   |
| Design   | Piston gate valve  |
| Type of reset  | Mechanical spring  |
| Nominal size   | 8 mm   |
| Exhaust-air function                                 | Via individual sub-base  |
| Sealing principle                                    | Soft   |
| Mounting position                                    | optional   |
| Type of piloting                                     | Direct   |
| Pilot air supply                                     | External   |
| Flow direction                                       | Non-reversible   |
| lap  | Overlap  |
| Pilot pressure                                       | 0.3 MPa...1.6 MPa<br>3 bar...16 bar  |
| Suitability for vacuum                               | yes  |
| b value  | 0.18   |
| C value  | 5293 l/sbar  |
| Flow rate of valve                                   | 1300 l/min   |
| Flow rate of valve on individual sub-base            | 1100 l/min   |
| Operating medium                                     | Compressed air to ISO 8573-1:2010 [7:4:4]  |
| Note on operating and pilot medium                   | Lubricated operation possible (in which case lubricated operation will always be required) |
| Vibration resistance                                 | Transport application test with severity level 2 to FN 942017-4 and EN 60068-2-6           |
| Shock resistance                                     | Shock test with severity level 2 to FN 942017-5 and EN 60068-2-27                          |
| Corrosion resistance class CRC                       | 0 - No corrosion stress  |
| LABS (PWIS) conformity                               | VDMA24364-B1/B2-L  |

| Feature                                   | Value                                     |
|---|---|
| Media temperature                         | -10 °C...60 °C                            |
| Sound pressure level                      | 85 dB(A)                                  |
| Pilot medium                              | Compressed air to ISO 8573-1:2010 [7:4:4] |
| Max. tightening torque for valve mounting | 1 Nm                                      |
| Product weight                            | 360 g                                     |
| Type of mounting                          | On sub-base                               |
| Pilot air port 12                         | Sub-base size 1 to ISO 5599-1             |
| Pilot air port 14                         | Sub-base size 1 to ISO 5599-1             |
| Pneumatic connection, port 1              | Sub-base size 1 to ISO 5599-1             |
| Pneumatic connection, port 2              | Sub-base size 1 to ISO 5599-1             |
| Pneumatic connection, port 3              | Sub-base size 1 to ISO 5599-1             |
| Pneumatic connection, port 4              | Sub-base size 1 to ISO 5599-1             |
| Pneumatic connection, port 5              | Sub-base size 1 to ISO 5599-1             |
| Note on materials                         | RoHS-compliant                            |
| Material seals                            | NBR                                       |
| Material housing                          | Die-cast aluminium                        |
| Material screws                           | Steel<br>Galvanised                       |