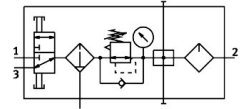


Service unit combination FRC-1/4-DB-7-MINI-KC

Part number: 8002801

FESTO



Data sheet

Feature	Value
Size	Mini
Width	158 mm
Exhaust-air function	Without flow control option
Series	DB
Actuator lock	Padlock (optional) Rotary knob with detent
Mounting position	Vertical +/-5°
Type of actuation	Manual
Condensate drain	Manually rotating
Design	On-off valve/filter regulator/distributor module/lubricator
Max. condensate volume	13 ml
Grade of filtration	40 µm
Controller function	Output pressure constant With secondary venting With return flow function Without primary pressure compensation
Pressure gauge (ANALOG) or Pressure display (DIGITAL)	With pressure gauge
Operating pressure	0.15 MPa...1 MPa 1.5 bar...10 bar
Pressure regulation range	0.5 bar...7 bar
Max. pressure hysteresis	0.5 bar
Max. standard flow rate	2400 l/min
Standard nominal flow rate (standardised to DIN 1343)	400 l/min
Operating medium	Compressed air to ISO 8573-1:2010 [7:9:4]
Note on operating and pilot medium	Lubricated operation not possible
Approved oils	Festo special oil in 1 litre containers Order code: 152 811 OFSW-32 ARAL Vitam GF 32 ESSO Nuto H 32 MOBIL DTE 24 SHELL Tellus Oil DO 32 Range of viscosity 32 mm ² /s at 40°C Viscosity range 32 mm ² /s (cSt) at 40°C
Corrosion resistance class CRC	1 - Low corrosion stress
LABS (PWIS) conformity	VDMA24364-B1/B2-L

Feature	Value
Storage temperature	-5 °C...50 °C
Air purity class at output	Compressed air to ISO 8573-1:2010 [7:9:-]
Media temperature	-5 °C...50 °C
Oil viscosity	ISO VG 32
Ambient temperature	-5 °C...50 °C
Product weight	360 g
Type of mounting	Either: In-line installation With through-hole Via mounting bracket
Pressure gauge connection	G1/8
Pneumatic connection, port 1	G1/4
Pneumatic connection, port 2	G1/4
Pneumatic connection, port 3	G1/4
Note on materials	RoHS-compliant
Material seals	NBR
Material on-off valve seals	FPM
Material rotary knob	POM
Material filter	PE
Material housing	PA-reinforced
Material piston slide	POM
Material bowl	PC