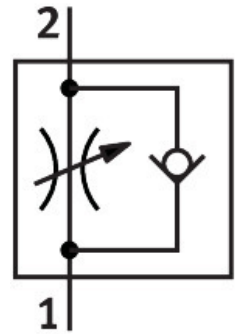


# One-way flow control valve VFOH-LE-A-G14-Q10

Part number: 578801

**FESTO**



## Data sheet

Feature	Value
Valve function	Exhaust air one-way flow control function
Pneumatic connection, port 1	QS-10
Pneumatic connection, port 2	G1/4
Type of actuation	Manual
Adjustment component	External hex
Type of mounting	Screw-in
Standard nominal flow rate in flow control direction	520 l/min
Standard nominal flow rate in blocked direction	345 l/min...535 l/min
Ambient temperature	0 °C...150 °C
Mounting position	optional
Operating pressure complete temperature range	0.2 bar...10 bar
Standard flow rate in flow control direction 0.6->0 MPa (6->0 bar, 87->0 psi)	840 l/min
Standard flow rate in non-return direction 0.6->0 MPa (6->0 bar, 87->0 psi)	635 l/min...790 l/min
Operating medium	Compressed air to ISO 8573-1:2010 [7:4:4]
Note on operating and pilot medium	Lubricated operation possible (in which case lubricated operation will always be required)
LABS (PWIS) conformity	VDMA24364-B2-L
Storage temperature	-10 °C...150 °C
Media temperature	0 °C...150 °C
Nominal torque	5 Nm
Tolerance for nominal tightening torque	± 10%
Product weight	48 g
Note on materials	RoHS-compliant
Material seals	FPM
Material hollow bolt	Wrought aluminium alloy

Feature	Value
Material release ring	Nickel-plated brass
Material adjusting screw	High-alloy stainless steel
Material swivel fitting	Brass Nickel-plated