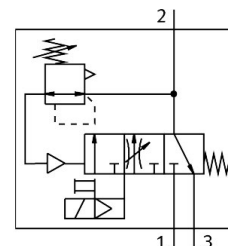


# Soft start/quick exhaust valve MS9-SV-G-C-V24-S-VS

Part number: 570737

**FESTO**



## Data sheet

Feature	Value
Series	MS
Size	9
Grid dimension	90 mm
Safety function	Exhaust
Performance Level (PL)	Exhausting/up to category 1, performance level c
Design	Piston gate valve
Type of actuation	Electric
Sealing principle	Soft
Exhaust-air function	Without flow control option
Manual override	None
Type of reset	Mechanical spring
Type of piloting	Pilot actuated
Valve function	3/2-way, closed, monostable Soft-start function
Operating pressure	0.35 MPa...1.6 MPa 3.5 bar...16 bar
Standard nominal flow rate (standardised to DIN 1343)	8300 l/min...16550 l/min
Standard nominal flow rate, exhaust 0.6->0 MPa (6->0 bar, 87->0 psi)	19730 l/min...21720 l/min
Duty cycle	100%
Characteristic coil data	24 V DC: 8.4 W
Nominal operating voltage DC	24 V
Permissible voltage fluctuations	+/- 10 %
Operating medium	Compressed air to ISO 8573-1:2010 [7:4:4]
Note on operating and pilot medium	Lubricated operation possible (in which case lubricated operation will always be required)
Corrosion resistance class CRC	2 - Moderate corrosion stress
Note on materials	RoHS-compliant
LABS (PWIS) conformity	VDMA24364-B1/B2-L
Sound pressure level	93 dB(A)
Degree of protection	IP65

Feature	Value
Media temperature	0 °C...60 °C
Ambient temperature	0 °C...60 °C
Storage temperature	0 °C...60 °C
Shock resistance	Shock test with severity level 1 to FN 942017-5 and EN 60068-2-27
Vibration resistance	Transport application test with severity level 1 to FN 942017-4 and EN 60068-2-6
CE mark (see declaration of conformity)	To EU EMC Directive To EC Machinery Directive In accordance with EU RoHS Directive
UKCA marking (see declaration of conformity)	To UK instructions for EMC To UK regulations for machines To UK RoHS instructions
Type of mounting	Either: In-line installation With accessories
Mounting position	optional
Product weight	3200 g
Pressure gauge connection	G1/8 G1/4
Pneumatic connection, port 3	G1 1 NPT
Electrical connection	Type A Plugs To EN 175301-803 Square design
Material housing	Die-cast aluminium
Material seals	NBR
Material piston slide	Brass
Material cover	Wrought aluminium alloy
Material underneath cover	PA