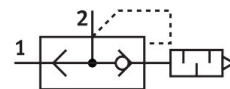


Quick exhaust valve VBQF-U-G18-Q6

Part number: 547532

FESTO



Data sheet

Feature	Value
Valve function	Quick exhaust
Selection of additional functions	With silencer
Pneumatic connection, port 1	QS-6
Pneumatic connection, port 2	G1/8
Type of mounting	Screw-in
Standard nominal flow rate, exhaust 0.6->0 MPa (6->0 bar, 87->0 psi)	1300 l/min
Standard nominal flow rate, air flow 0.6->0,5 MPa (6->5 bar, 87->72.5 psi)	350 l/min
Operating pressure	0.5 bar...10 bar
Ambient temperature	-10 °C...60 °C
Material housing	Die-cast aluminium Die-cast zinc
Operating medium	Compressed air to ISO 8573-1:2010 [7:4:4]
Nominal size	5 mm
Mounting position	optional
Note on operating and pilot medium	Lubricated operation possible (in which case lubricated operation will always be required)
Corrosion resistance class CRC	1 - Low corrosion stress
LABS (PWIS) conformity	VDMA24364-B1/B2-L
Cleanroom class	Class 4 according to ISO 14644-1
Media temperature	-10 °C...60 °C
Sound pressure level	75 dB(A)
Product weight	85.5 g
Note on materials	RoHS-compliant
Material seals	NBR