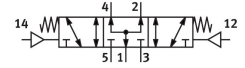


Pneumatic valve VL-5/3B-3/8-B-EX

Part number: 536054

FESTO



Data sheet

Feature	Value
Valve function	5/3-way, pressurised
Type of actuation	Pneumatic
Construction width	40 mm
Standard nominal flow rate (standardised to DIN 1343)	2600 l/min
pneumatic working port	G3/8
Operating pressure	-0.09 MPa...1 MPa -0.9 bar...10 bar
Design	Piston gate valve
Type of reset	Mechanical spring
CE mark (see declaration of conformity)	To EU Explosion Protection Directive (ATEX)
UKCA marking (see declaration of conformity)	To UK EX instructions
ATEX category gas	II 2G
ATEX category dust	II 2D
Explosion ignition protection type for gas	Ex h IIC T4 Gb
Explosion ignition protection type for dust	Ex h IIIC T130°C Db
Explosion ambient temperature	-10 °C ≤ Ta ≤ +60 °C
Explosion protection certification outside the EU	EPL Db (GB) EPL Gb (GB)
Nominal size	12 mm
Grid dimension	41 mm
Exhaust-air function	With flow control option
Sealing principle	Soft
Mounting position	optional
Manual override	None
Type of piloting	Direct
Pilot air supply	External
Flow direction	Reversible
lap	Overlap
Pilot pressure	0.3 MPa...1 MPa 3 bar...10 bar
Max. switching frequency	3 Hz
Switching time off	28 ms

Feature	Value
Switching time on	7 ms
Switching time reversal	78 ms
Explosion protection	Zone 1 (ATEX) Zone 1 (UKEX) Zone 2 (ATEX) Zone 21 (ATEX) Zone 21 (UKEX) Zone 22 (ATEX)
Operating medium	Compressed air to ISO 8573-1:2010 [7:4:4]
Note on operating and pilot medium	Lubricated operation possible (in which case lubricated operation will always be required)
Corrosion resistance class CRC	1 - Low corrosion stress
LABS (PWIS) conformity	VDMA24364-B1/B2-L
Storage temperature	-40 °C...60 °C
Media temperature	-10 °C...60 °C
Pilot medium	Compressed air to ISO 8573-1:2010 [7:4:4]
Ambient temperature	-10 °C...60 °C
Product weight	680 g
Type of mounting	With through-hole
Pilot air port 12	G1/8
Pilot air port 14	G1/8
Pneumatic connection, port 1	G3/8
Pneumatic connection, port 2	G3/8
Pneumatic connection, port 3	G3/8
Pneumatic connection, port 4	G3/8
Pneumatic connection, port 5	G3/8
Note on materials	RoHS-compliant
Material seals	NBR
Material housing	Die-cast aluminium