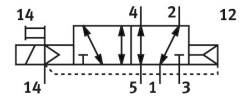
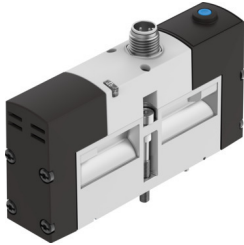


# Solenoid valve

## VSVA-B-M52-AZH-A1-1R5L

Part number: 534545

**FESTO**



## Data sheet

Feature	Value
Valve function	5/2-way, monostable
Type of actuation	Electric
Construction width	26 mm
Standard nominal flow rate (standardised to DIN 1343)	1100 l/min
pneumatic working port	Sub-base size 26 mm to ISO 15407-1
Operating voltage	24V DC
Operating pressure	-0.09 MPa...1.6 MPa -0.9 bar...16 bar
Design	Piston gate valve
Type of reset	Pneumatic spring
Approval	RCM trademark c UL us - Recognized (OL)
CE mark (see declaration of conformity)	To EU EMC Directive
UKCA marking (see declaration of conformity)	To UK instructions for EMC To UK RoHS instructions
Degree of protection	IP65 NEMA 4
Nominal size	9 mm
Grid dimension	27 mm
Exhaust-air function	With flow control option Via throttle plate Via individual sub-base
Sealing principle	Soft
Mounting position	optional
Conforms to standard	ISO 15407-1
Manual override	Non-detenting
Type of piloting	Pilot actuated
Pilot air supply	External
Flow direction	optional
lap	Overlap
Reverse polarity protection	For all electrical connections
Additional functions	Holding current reduction Safety shut-off

Feature	Value
Signal status display	LED
Pilot pressure	0.3 MPa...0.8 MPa 3 bar...8 bar
b value	0.25
C value	4.5 l/sbar
Flow rate of valve	1400 l/min
Flow rate of valve on individual sub-base	1100 l/min
Flow rate of pneumatically interlinked valve	1100 l/min
Switching time off	40 ms
Switching time on	25 ms
Duty cycle	100%
Max. positive test pulse with 0 signal	400 µs
Max. negative test pulse with 1 signal	100 µs
Nominal pick-up current per solenoid coil	110 mA up to 20 ms
Nominal current with current reduction	30 mA after 20 ms
Characteristic coil data	24 V DC: low-current phase 1.0 W, high-current phase 2.4 W
Permissible voltage fluctuations	+/- 10 %
Operating medium	Compressed air to ISO 8573-1:2010 [7:4:4]
Note on operating and pilot medium	Lubricated operation possible (in which case lubricated operation will always be required)
Vibration resistance	Transport application test with severity level 2 to FN 942017-4 and EN 60068-2-6
Shock resistance	Shock test with severity level 2 to FN 942017-5 and EN 60068-2-27
Corrosion resistance class CRC	2 - Moderate corrosion stress
LABS (PWIS) conformity	VDMA24364-B1/B2-L
Media temperature	-5 °C...50 °C
Relative air humidity	0 - 90%
Protection against direct and indirect contact	PELV
Pilot medium	Compressed air to ISO 8573-1:2010 [7:4:4]
Ambient temperature	-5 °C...50 °C
Max. tightening torque for valve mounting	1.8 Nm...2.2 Nm
Product weight	270 g
Electrical connection	3-pin M12x1 Central plug Round design
Type of mounting	On sub-base Via through-hole and screw
Pilot air port 12/14	Sub-base size 26 mm to ISO 15407-1
Pilot exhaust port 82/84	Ducted Not ducted as per standard Either:
Note on materials	RoHS-compliant
Material seals	FPM HNBR NBR
Material housing	Die-cast aluminium