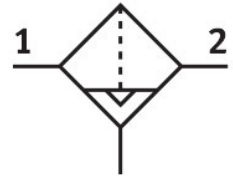


Filter MS6N-LF-1/4-ERV

Part number: 531513

FESTO



Data sheet

Feature	Value
Size	6
Series	MS
Mounting position	Vertical +/-5°
Grade of filtration	40 µm
Condensate drain	Fully automatic Manual, non-detenting
Design	Sintered filter with centrifugal separator
Bowl guard	Plastic bowl guard
Degree of condensate separation	75 %
Operating pressure	2 bar...12 bar
Standard nominal flow rate (standardised to DIN 1343)	2500 l/min
Operating medium	Compressed air to ISO 8573-1:2010 [7:9:] Inert gases
Corrosion resistance class CRC	2 - Moderate corrosion stress
LABS (PWIS) conformity	VDMA24364-B1/B2-L
Storage temperature	-10 °C...60 °C
Suitable for use with food	See supplementary material information
Air purity class at output	Compressed air to ISO 8573-1:2010 [7:8:4]
Media temperature	-10 °C...60 °C
Ambient temperature	-10 °C...60 °C
Pore size	40 µm
Product weight	600 g
Type of mounting	In-line installation With accessories Either:
Pneumatic connection, port 1	1/4 NPT
Pneumatic connection, port 2	1/4 NPT
Note on materials	RoHS-compliant
Material seals	NBR
Material filter	PE
Material housing	Die-cast aluminium
Material bowl	PC

Feature	Value
Material separating plate	POM