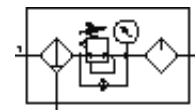


Service unit combination MSB6-1/2:H2N3M1-WP-Z

Part number: 530215

FESTO

Consisting of filter, pressure regulator, lubricator and wall mounting plate. 12 bar maximum output pressure, 40 µm filter, with pressure gauge, plastic bowl with plastic bowl guard, manual condensate drain, direction of flow: from right to left.



Data sheet

Feature	Value
Size	6
Series	MS
Actuator lock	Rotary knob with lock with accessories, lockable
Assembly position	Vertical +/- 5°
Grade of filtration	40 µm
Condensate drain	manual rotary
Design structure	Pressure regulator with gauge Standard filter Standard oil-mist lubricator
Bowl guard	Plastic guard
Pressure gauge	with pressure gauge
Pressure control range	1 ... 12 bar
Inlet pressure 1	1.5 ... 18 bar
Standard nominal flow rate	3,500 l/min
Operating medium	Filtered, unlubricated compressed air, 40 µm filtration Filtered, lubricated compressed air, 40 µm filtration
Corrosion resistance classification CRC	2
Product weight	2,000 g
Mounting type	with accessories
Pneumatic connection, port 1	G1/2
Pneumatic connection, port 2	G1/2
Materials information, housing	Aluminium die cast
Materials information for bowl	PC