

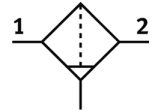
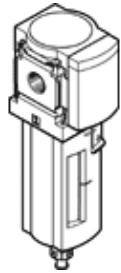
# Activated carbon filter

## MS6-LFX-1/2-U-Z

Part number: 529682

FESTO

Metal bowl, direction of flow: from right to left.



### Data sheet

Feature	Value
Size	6
Series	MS
Assembly position	Vertical +/- 5°
Design structure	Active carbon filter
Bowl guard	integrated as metal shell
Operating pressure	0 ... 20 bar
Max. standard flow rate for air quality class	900 l/min
Operating medium	Compressed air in accordance with ISO8573-1:2010 [1:4:2] Inert gases
Corrosion resistance classification CRC	2
Storage temperature	-10 ... 60 °C
Air purity class at output	Compressed air to ISO 8573-1:2010 [1:4:1]
Medium temperature	5 ... 30 °C
Residual oil content	0.003 mg/m <sup>3</sup>
Ambient temperature	-10 ... 60 °C
Product weight	820 g
Mounting type	Optional Line installation with accessories
Pneumatic connection, port 1	G1/2
Pneumatic connection, port 2	G1/2
Materials note	Free of copper and PTFE Conforms to RoHS
Materials information for filter	Active carbon
Materials information, housing	Aluminium die cast
Materials information for bowl	Wrought Aluminium alloy