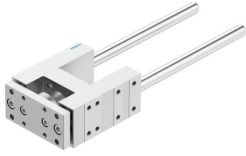


Guide unit FENG-50-250-KF

Part number: 34510

FESTO



Data sheet

Feature	Value
Size	50
Stroke	250 mm
Mounting position	optional
Guide	Recirculating ball bearing guide
Design	Guidance
Explosion protection	The information in the certificate must be observed!
LABS (PWIS) conformity	VDMA24364-B2-L
Ambient temperature	-20 °C...80 °C
Max. force F _y	1260 N
Max. force F _y static	1600 N
Max. force F _z	1260 N
Max. force F _z static	1600 N
Max. moment M _x	65 Nm
Max. torque M _x static	83 Nm
Max. moment M _y	70 Nm
Max. torque M _y static	89 Nm
Max. moment M _z	70 Nm
Max. torque M _z static	89 Nm
Displacement force	15 N
Product weight	5255 g
Type of mounting	Via female thread
Note on materials	RoHS-compliant
Material guide component	Tempered steel
Material housing	Anodised wrought aluminium alloy
Material yoke plate	Anodised wrought aluminium alloy