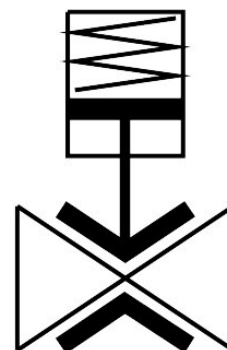


Pinch valve

VZQA-C-M22C-15-S5S5-V2V4E-6

Part number: 3412424

FESTO



Data sheet

| Feature | Value |
|-----------------------------|---|
| Design | Pinch valve, pneumatically actuated |
| Type of actuation | Pneumatic |
| Sealing principle | Soft |
| Mounting position | optional |
| Type of mounting | In-line installation |
| Connection Process valve | Clamp to DIN 32676 series A |
| Nominal size DN | 15 |
| Valve function | 2/2-way, closed, monostable |
| Flow direction | Reversible |
| Medium pressure | 0 MPa...0.6 MPa 0 bar...6 bar 0 psi...87 psi |
| Note on the medium pressure | Use in the vacuum range was tested up to -0.09 MPa with the air at room temperature. Depending on the application, a counter-vacuum may have to be created on the control side to guarantee the media flow. |
| Operating pressure | 0.35 MPa...0.6 MPa 3.5 bar...6 bar 50.75 psi...87 psi |
| Nominal pressure PN | 10 |
| Burst pressure | 1.6 MPa 16 bar 232 psi |
| Type of reset | Mechanical spring |
| Type of piloting | Externally controlled |
| Auxiliary pilot air port 12 | M5 |
| Pilot medium | Compressed air to ISO 8573-1:2010 [7:4:1] |
| Medium | Compressed air to ISO 8573-1:2010 [-::1] Water |
| Max. viscosity | 4000 mm ² /s |

| Feature | Value |
|-------------------------------|--|
| Media temperature | -5 °C...100 °C |
| Ambient temperature | -5 °C...60 °C |
| Storage temperature | 5 °C...20 °C |
| Flow rate Kv | 5 m³/h |
| Switching time on | 150 ms |
| Switching time off | 250 ms |
| Note on materials | RoHS-compliant |
| LABS (PWIS) conformity | VDMA24364 zone III |
| Material housing | High-alloy stainless steel |
| Material number housing | 1.4301 |
| Material housing cover | High-alloy stainless steel |
| Material number housing cover | 1.4404 / AISI 316L |
| Material seals | FPM |
| Material shut-off element | EPDM |
| Product weight | 667 g |
| Suitable for use with food | See supplementary material information |
| Material bowl | PA6 |