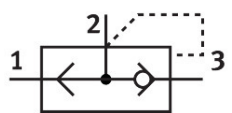
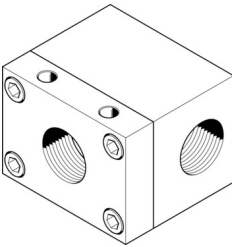


# Quick exhaust valve SE-3/4

Part number: 2280



## Data sheet

Feature	Value
Valve function	Quick exhaust
Pneumatic connection, port 1	G3/4
Pneumatic connection, port 2	G3/4
Type of mounting	With through-hole
Standard nominal flow rate, exhaust 0.6->0.5 MPa (6->5 bar, 87->72.5 psi)	7500 l/min
Standard nominal flow rate, air flow 0.6->0.5 MPa (6->5 bar, 87->72.5 psi)	2500 l/min
Operating pressure	0.5 bar...10 bar
Ambient temperature	-20 °C...75 °C
Material housing	Wrought aluminium alloy Anodised
Operating medium	Compressed air to ISO 8573-1:2010 [7:4:4]
Nominal size	19 mm
Mounting position	optional
Note on operating and pilot medium	Lubricated operation possible (in which case lubricated operation will always be required)
LABS (PWIS) conformity	VDMA24364-B1/B2-L
Media temperature	-20 °C...75 °C
Product weight	710 g
Pneumatic connection, port 3	G3/4
Note on materials	RoHS-compliant
Material seals	NBR