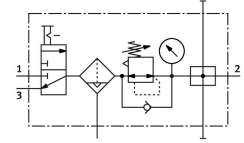


# Service unit combination LFR-1/2-D-MAXI-KB-A

Part number: 186042

FESTO



## Data sheet

Feature	Value
Size	Maxi
Series	D
Actuator lock	Rotary knob with detent
Mounting position	Vertical +/-5°
Grade of filtration	40 µm
Condensate drain	Fully automatic
Design	Branching module On/off valve Filter regulator with pressure gauge
Max. condensate volume	80 cm <sup>3</sup>
Bowl guard	Metal bowl guard
Pressure gauge (ANALOG) or Pressure display (DIGITAL)	With pressure gauge
Operating pressure	0.2 MPa...1.2 MPa 2 bar...12 bar 29 psi...174 psi
Pressure regulation range	0.05 MPa...1.2 MPa 0.5 bar...12 bar 7.25 psi...174 psi
Max. pressure hysteresis	0.01 MPa 0.1 bar 1.45 psi
Standard nominal flow rate (standardised to DIN 1343)	8000 l/min
Operating medium	Compressed air to ISO 8573-1:2010 [-:~:] Inert gases
Corrosion resistance class CRC	2 - Moderate corrosion stress
LABS (PWIS) conformity	VDMA24364-B1/B2-L
Air purity class at output	Compressed air to ISO 8573-1:2010 [7:8:4] Inert gases
Media temperature	-10 °C...60 °C
Ambient temperature	-10 °C...60 °C
Product weight	3300 g
Type of mounting	In-line installation With accessories Either:
Pneumatic connection, port 1	G1/2

<b>Feature</b>	<b>Value</b>
Pneumatic connection, port 2	G1/2
Material housing	Die-cast zinc
Material bowl	PC