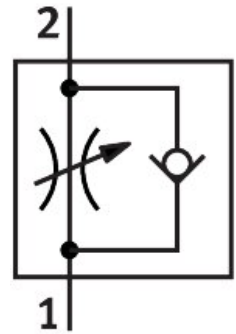


One-way flow control valve GRLA-M5-QS-4-LF-C

Part number: 175056

FESTO



Data sheet

Feature	Value
Valve function	Exhaust air one-way flow control function
Pneumatic connection, port 1	QS-4
Pneumatic connection, port 2	M5
Adjustment component	Slotted head screw
Type of mounting	Screw-in
Standard nominal flow rate in flow control direction	40 l/min
Standard nominal flow rate in blocked direction	50 l/min...75 l/min
Operating pressure	0.2 bar...10 bar 2.9 psi...145 psi
Ambient temperature	-10 °C...60 °C
Maritime classification	See certificate
Mounting position	optional
Standard flow rate in flow control direction 0.6->0 MPa (6->0 bar, 87->0 psi)	80 l/min
Standard flow rate in non-return direction 0.6->0 MPa (6->0 bar, 87->0 psi)	100 l/min...150 l/min
Operating medium	Compressed air to ISO 8573-1:2010 [7:4:4]
Note on operating and pilot medium	Lubricated operation possible (in which case lubricated operation will always be required)
LABS (PWIS) conformity	VDMA24364-B1/B2-L
Cleanroom suitability, measured according to ISO 14644-14	Class 4 according to ISO 14644-1
Media temperature	-10 °C...60 °C
Max. tightening torque	1.5 Nm
Product weight	9 g
Material screwed plug	Brass Nickel-plated
Note on materials	RoHS-compliant

Feature	Value
Material seals	NBR
Material release ring	POM
Material adjusting screw	Brass
Material swivel fitting	Die-cast zinc