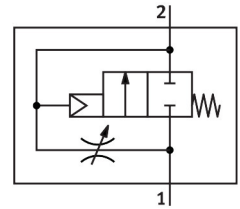


On/off valve HEL-3/4-D-MIDI-NPT

Part number: 173921

FESTO



Data sheet

Feature	Value
Grid dimension	55 mm
Exhaust-air function	With flow control option
Type of actuation	Pneumatic
Sealing principle	Soft
Mounting position	optional
Manual override	None
Design	Piston gate valve
Type of reset	Mechanical spring
Type of piloting	Direct
Flow direction	Non-reversible
Valve function	2/2-way, closed, monostable
Operating pressure	0.3 MPa...1.6 MPa 3 bar...16 bar
b value	0.48
C value	20.5 l/sbar
Standard nominal flow rate (standardised to DIN 1343)	3800 l/min
Operating medium	Compressed air to ISO 8573-1:2010 [7:4:4] Inert gases
Note on operating and pilot medium	Lubricated operation possible (in which case lubricated operation will always be required)
Corrosion resistance class CRC	2 - Moderate corrosion stress
LABS (PWIS) conformity	VDMA24364-B1/B2-L
Air purity class at output	Compressed air to ISO 8573-1:2010 [7:4:4] Inert gases
Media temperature	-10 °C...60 °C
Ambient temperature	-10 °C...60 °C
Product weight	270 g
Type of mounting	In-line installation With accessories
Pneumatic connection, port 1	3/4 NPT
Pneumatic connection, port 2	3/4 NPT

Feature	Value
Note on materials	RoHS-compliant
Material seals	NBR
Material housing	Die-cast aluminium