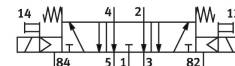


Solenoid valve CPE24-M1H-5/3E-3/8

Part number: 170267

FESTO



Data sheet

Feature	Value
Valve function	5/3 exhausted
Type of actuation	Electric
Construction width	24 mm
Standard nominal flow rate (standardised to DIN 1343)	2650 l/min
pneumatic working port	G3/8
Operating voltage	24V DC
Operating pressure	0.25 MPa...1 MPa 2.5 bar...10 bar
Design	Piston gate valve
Type of reset	Mechanical spring
Approval	c UL us - Recognized (OL)
Maritime classification	See certificate
Certificate issuing authority	DNV-TAA000032X UL MH19482
Degree of protection	IP65 With plug socket To IEC 60529
Nominal size	11 mm
Exhaust-air function	With flow control option
Sealing principle	Soft
Mounting position	optional
Manual override	Detenting via accessory Non-detenting
Type of piloting	Pilot actuated
Pilot air supply	Internal
Flow direction	Non-reversible
Valve position code	Inscription label holder
lap	Overlap
Switching time off	55 ms
Switching time on	25 ms
Duty cycle	100%
Max. positive test pulse with 0 signal	3300 µs
Max. negative test pulse with 1 signal	3100 µs

Feature	Value
Characteristic coil data	24 V DC: 1.5 W
Permissible voltage fluctuations	-15%/+10%
Operating medium	Compressed air to ISO 8573-1:2010 [7:4:4]
Note on operating and pilot medium	Lubricated operation possible (in which case lubricated operation will always be required)
Vibration resistance	Transport application test with severity level 2 to FN 942017-4 and EN 60068-2-6
Shock resistance	Shock test with severity level 2 to FN 942017-5 and EN 60068-2-27
Corrosion resistance class CRC	2 - Moderate corrosion stress
LABS (PWIS) conformity	VDMA24364-B1/B2-L
Media temperature	-5 °C...50 °C
Ambient temperature	-5 °C...50 °C
Product weight	430 g
Electrical connection	Type C
Type of mounting	With through-hole
Pilot exhaust port 82	M5
Pilot exhaust port 84	M5
Pilot air port 12	M5
Pilot air port 14	M5
Pneumatic connection, port 1	G3/8
Pneumatic connection, port 2	G3/8
Pneumatic connection, port 3	G3/8
Pneumatic connection, port 4	G3/8
Pneumatic connection, port 5	G3/8
Note on materials	RoHS-compliant
Material seals	NBR
Material housing	Die-cast aluminium