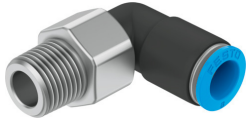


# Push-in L-fitting, rotatable QSRL-1/4-8

Part number: 153414

**FESTO**



## Data sheet

Feature	Value
Size	Standard
Nominal size	4.6 mm
Type of seal on screwed plug	Coating
Mounting position	optional
Design	L-shape Push-pull principle
Size of pack	1
Operating pressure complete temperature range	-0.095 MPa...0.6 MPa -0.95 bar...6 bar -13.775 psi...87 psi
Temperature-dependent operating pressure	-0.095 MPa...1.4 MPa -0.95 bar...14 bar -13.775 psi...203 psi
Max. rotational speed	400 rpm
Operating medium	Compressed air to ISO 8573-1:2010 [7:-:-]
Note on operating and pilot medium	Lubricated operation possible
Corrosion resistance class CRC	1 - Low corrosion stress
LABS (PWIS) conformity	VDMA24364-B1/B2-L
Ambient temperature	0 °C...60 °C
Max. radial torque	0.015 Nm
Nominal torque	9 Nm
Tolerance for nominal tightening torque	± 20%
Product weight	32 g
Type of mounting	External hexagon, size 17 mm
Pneumatic connection, port 1	Male thread R1/4
Pneumatic connection, port 2	For tubing outside diameter of 8 mm
Colour of release ring	Blue
Material screwed plug	Nickel-plated brass
Note on materials	RoHS-compliant
Material housing	PBT
Material release ring	POM
Material tubing seal	NBR
Material tubing clamp component	High-alloy stainless steel

