

Solenoid valve

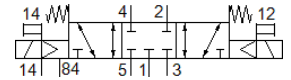
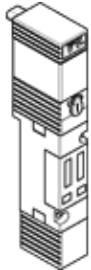
MTH-5/3G-7,0-S-VI

Part number: 151702
Product to be discontinued

FESTO

For valve terminal

Type to be discontinued. Available until 2017. See Support Portal for alternative products.



Data sheet

Feature	Value
Valve function	5/3 closed
Type of actuation	electrical
Standard nominal flow rate	1,300 l/min
Operating pressure	-0.9 ... 10 bar
Design structure	Piston slide
Type of reset	mechanical spring
Nominal size	7 mm
Exhaust-air function	throttleable
Sealing principle	soft
Assembly position	Any
Manual override	with accessories, detenting
Type of piloting	Piloted
Flow direction	reversible
Pilot pressure	4 ... 6 bar
b value	0.23
C value	6.1 l/sbar
Switching time off	55 ms
Switching time on	25 ms
Operating medium	Compressed air in accordance with ISO8573-1:2010 [7:4:4]
Note on operating and pilot medium	Lubricated operation possible (subsequently required for further operation)
Medium temperature	-5 ... 50 °C
Ambient temperature	-5 ... 50 °C
Mounting type	with through hole
Pneumatic connection, port 1	Sub-base
Pneumatic connection, port 2	Sub-base
Pneumatic connection, port 3	Sub-base
Pneumatic connection, port 4	Sub-base
Pneumatic connection, port 5	Sub-base
Materials note	Conforms to RoHS
Materials information for seals	NBR