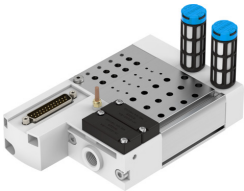


**Manifold rail**  
**VABM-C8-12E-G14-24-M1-L**  
Part number: 1361876



**Data sheet**

Feature	Value
Grid dimension	12 mm
Max. number of valve positions	24
Corrosion resistance class CRC	0 - No corrosion stress
LABS (PWIS) conformity	VDMA24364-B1/B2-L
Max. tightening torque for valve mounting	0.6 Nm
Max. tightening torque wall mounting	5 Nm
Product weight	1500 g
Pneumatic connection, port 1	G1/4
Pneumatic connection, port 3	G1/4
Pneumatic connection, port 5	G1/4
Note on materials	RoHS-compliant
Material manifold rail	Wrought aluminium alloy