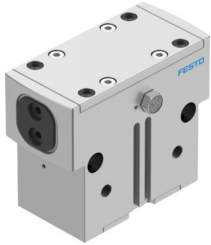


# Parallel gripper HGPD-50-A-G2

Part number: 1132953

FESTO



## Data sheet

Feature	Value
Size	50
Stroke per gripper jaws	12 mm
Max. replacement accuracy	0.2 mm
Max. angular gripper jaw backlash ax, ay	0.1 deg
Max. gripper jaw backlash Sz	0.02 mm
Rotationally symmetrical	0.2 mm
Repetition accuracy, gripper	0.05 mm
Number of gripper jaws	2
Drive system	Pneumatic
Mounting position	optional
Mode of operation	Double-acting
Gripper function	Parallel
Gripper force back-up	During closing
Design	Wedge-shaped drive Force pilot operated motion sequence
Position detection	Via proximity switch
Operating pressure	4 bar...8 bar
Operating pressure of blocked air	0 bar...0.5 bar
Max. operating frequency of gripper	2 Hz
Min. opening time at 0.6 MPa (6 bar, 87 psi)	170 ms
Min. closing time at 0.6 MPa (6 bar, 87 psi)	87 ms
Max. mass per external gripper finger	813 g
Operating medium	Compressed air to ISO 8573-1:2010 [7:4:4]
Note on operating and pilot medium	Lubricated operation possible (in which case lubricated operation will always be required)
Corrosion resistance class CRC	2 - Moderate corrosion stress
LABS (PWIS) conformity	VDMA24364-B2-L
Degree of protection	IP65
Ambient temperature	5 °C...60 °C
Mass moment of inertia	36.74 kgcm <sup>2</sup>
Max. torque at gripper Mx static	90 Nm
Max. torque at gripper My static	60 Nm

Feature	Value
Max. torque at gripper Mz static	50 Nm
Lubrication interval for guide components	5 MioCyc
Product weight	2150 g
Type of mounting	Via female thread and centring sleeve Via through-hole and centring sleeve Via through-hole and dowel pin Via female thread and dowel pin Either:
Pneumatic connection, blocked air	M5
Pneumatic connection	G1/8
Note on materials	RoHS-compliant
Material cover cap	High-alloy stainless steel
Material housing	Anodised aluminium
Material gripper jaws	Hardened steel