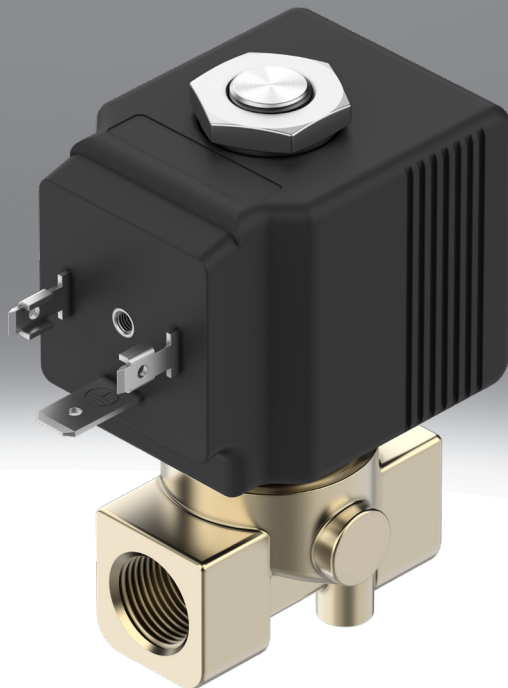


Solenoid valve VZWD-B

FESTO



Characteristics

At a glance

Directly actuated solenoid valves VZWD-B are mainly intended for applications with high pressure ranges and low flow rates. Directly actuated valves switch the sealing component directly via the solenoid system. The seal generally has to lift away from the seat against the effective operating pressure using just the actuator. A closing spring, supported by the pressure of the medium, keeps the valve closed. The function is dependent on the seat size, the effective operating pressure and the magnetic force. The difference with respect to force pilot operated solenoid valves (VZWF-B) lies in the flow rate.

Type code

001	Series	
VZWD	Solenoid valve, directly actuated VZWD	
002	Product version	
B	Function-optimised	
003	Directional control valve type	
L	In-line valve	
004	Valve function	
M22C	2/2-way valve, normally closed	
005	Reset method for monostable/single solenoid valves	
M	Mechanical spring	
006	Process valve connection	
G18	G1/8	
G14	G1/4	
N18	1/8 NPT	
N14	1/4 NPT	
007	Nominal width	
10	1 mm	
15	1.5 mm	
20	2 mm	
25	2.5 mm	
30	3 mm	
40	4 mm	
52	5.2 mm	
64	6.4 mm	
008	Sealant	
V	FPM	

009	Solenoid coil type	
30	Width 30 mm	
36	Width 36 mm	
010	Nominal operating voltage	
1	24 V DC	
2A	110 V AC/50-60 Hz	
3A	230 V AC/50-60 Hz	
011	Electrical connection	
A1	Plug pattern type A, to EN 175301-803	
012	Pressure of medium [bar]	
4.5	4.5	
5	5	
8	8	
9	9	
10	10	
14	14	
15	15	
16	16	
20	20	
22	22	
24	24	
26	26	
30	30	
33	33	
35	35	
40	40	
50	50	
80	80	
100	100	
013	Corrosion protection	
	Standard	
R1	Stainless steel	

Datasheet

General technical data, G thread and NPT thread

Nominal size	1 mm	1.5 mm	2 mm	2.5 mm	3 mm	4 mm	5.2 mm	6.4 mm
Valve function	2/2-way, closed, monostable							
Type of mounting	In-line installation							
Type of actuation	Electric							
Type of reset	Mechanical spring							
Flow direction	Non-reversible							
Type of piloting	Direct							
Manual override	None							
Mounting position	optional							
Sealing principle	Soft							
Max. viscosity	25 mm ² /s							

Operating and environmental conditions, G thread and NPT thread

Nominal size	1 mm	1.5 mm	2 mm	2.5 mm	3 mm	4 mm	5.2 mm	6.4 mm
Flow rate Kv	0.04 m ³ /h	0.07 m ³ /h	0.1 m ³ /h	0.15 m ³ /h	0.25 m ³ /h	0.36 m ³ /h	0.47 m ³ /h	0.64 m ³ /h
Medium pressure	0 MPa 8 MPa 10 MPa	0 MPa 2.6 MPa 3 MPa 8 MPa	0 MPa 2 MPa 2.2 MPa 4 MPa 5 MPa	0 MPa 1.4 MPa 1.6 MPa 3.3 MPa 3.5 MPa	0 MPa 1.5 MPa 2.4 MPa	0 MPa 0.8 MPa 1.5 MPa	0 MPa 0.9 MPa 1 MPa	0 MPa 0.45 MPa 0.5 MPa
Medium pressure	0 bar 80 bar 100 bar	0 bar 26 bar 30 bar 80 bar	0 bar 20 bar 22 bar 40 bar 50 bar	0 bar 14 bar 16 bar 33 bar 35 bar	0 bar 15 bar 24 bar	0 bar 8 bar 15 bar	0 bar 9 bar 10 bar	0 bar 4.5 bar 5 bar
Medium pressure	0 psi 1,160 psi 1,450 psi	0 psi 377 psi 435 psi 1,160 psi	0 psi 290 psi 319 psi 580 psi 725 psi	0 psi 203 psi 232 psi 478.5 psi 507.5 psi	0 psi 217.5 psi 348 psi	0 psi 116 psi 217.5 psi	0 psi 130.5 psi 145 psi	0 psi 65.25 psi 72.5 psi
Medium	Compressed air to ISO 8573-1:2010 [7:4:4], Inert gases, Mineral oil, Water, Neutral fluids, Other media on request							
Pressure difference	0 MPa							
Pressure difference	0 bar							
Pressure difference	0 psi							
Ambient temperature	-10 ... 80°C							
Media temperature	-10 ... 140°C							
Corrosion resistance class CRC	1 - Low corrosion stress, 3 - high corrosion stress							
UKCA marking (see declaration of conformity)	To UK instructions for EMC, To UK RoHS instructions, To UK regulations for electrical equipment							

Electrical data, G thread and NPT thread

Characteristic coil data	110 V AC: 50/60 Hz, pick-up power 20.0 VA, holding power 15.0 VA	110 V AC: 50/60 Hz, pick-up power 40.0 VA, holding power 30.0 VA	220/230 V AC: 50/60 Hz, pick-up power 20.0 VA, holding power 15.0 VA	220/230 V AC: 50/60 Hz, pick-up power 40.0 VA, holding power 30.0 VA	24 V DC: 10.0 W	24 V DC: 27.0 W
Electrical connection	Type A, Plugs, To EN 175301-803, Square design					
CE mark (see declaration of conformity)	To EU EMC Directive, To EU Low Voltage Directive, In accordance with EU RoHS Directive					
Insulation material class	F	H	F	H	F	H
Duty cycle	100%					
Permissible voltage fluctuations	+15% / -10%				+/- 10%	
Switching time on	8 ms					
Switching time off	25 ms					

Material, G thread and NPT thread

Material housing	Brass, High-alloy stainless steel
Material number housing	1.4305, CW617N
Material seals	FPM
Note on materials	RoHS-compliant

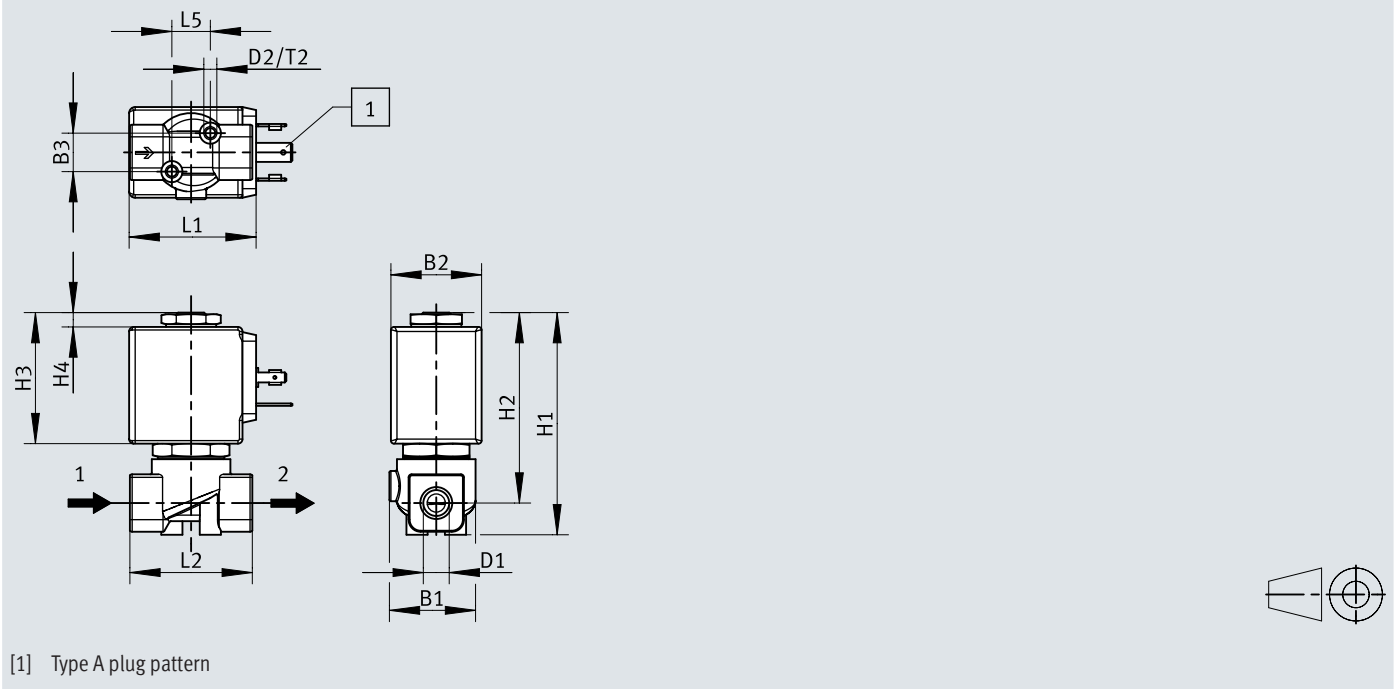
Datasheet

Weight		
Solenoid coil type	Width 30 mm	Width 36 mm
Product weight	300 g, 360 g	380 g, 440 g

Dimensions

Dimensions – Brass housing, standard

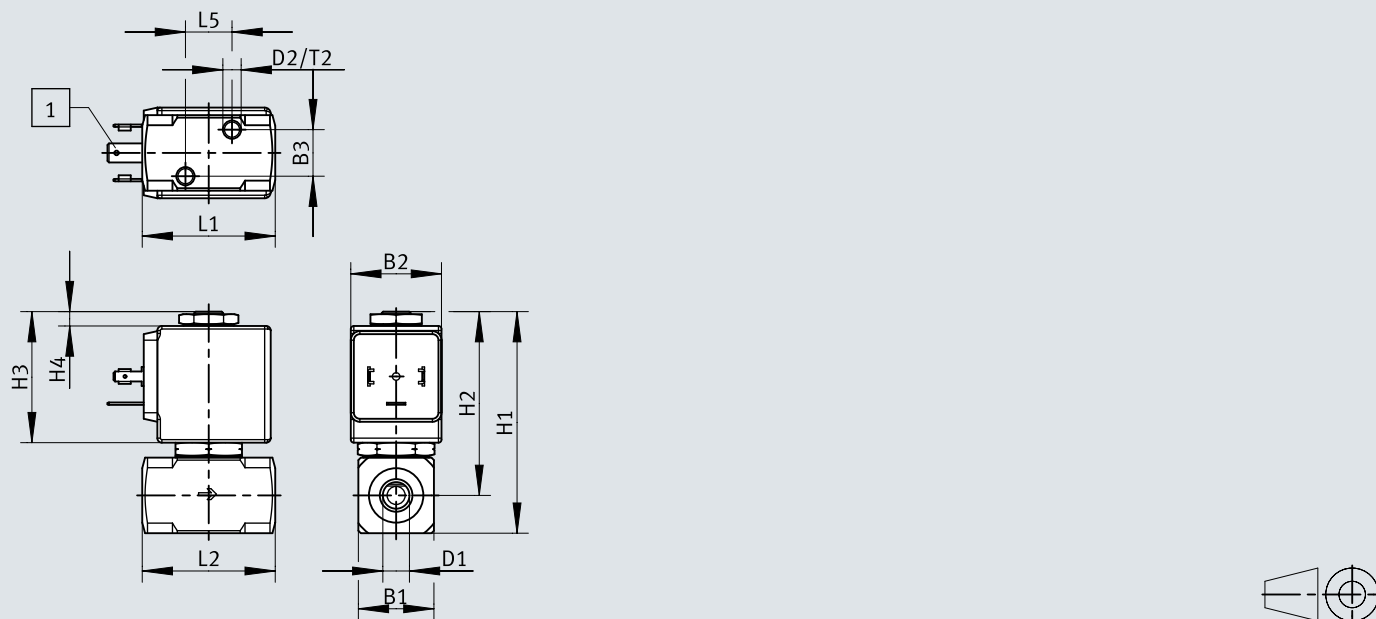
Download CAD data www.festo.com



	B1	B2	B3	D1	D2	H1	H2	H3	H4	L1	L2	T2
VZWD-B-L-M22C-M-G18-...-30-...	28,5	30	12,7	G 1/8	M4	73,5	63,5	43,4	4,8	42	40,5	5
VZWD-B-L-M22C-M-G14-...-30-...				G 1/4								
VZWD-B-L-M22C-M-G18-...-36-...		36		G 1/8			47,8					
VZWD-B-L-M22C-M-G14-...-36-...				G 1/4								

Dimensions

Dimensions – Stainless steel housing,....-R1

Download CAD data www.festo.com

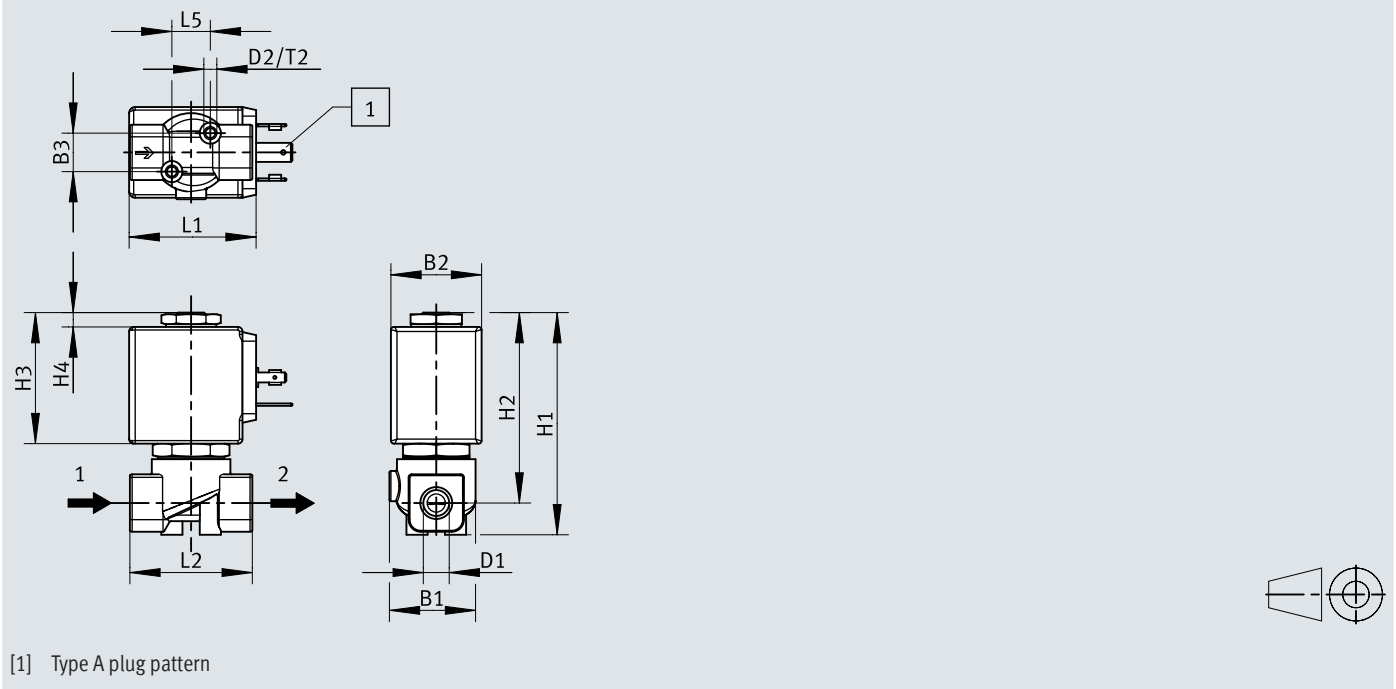
[1] Type A plug pattern

	B1	B2	B3	D1	D2	H1	H2	H3	H4	L1	L2	T2
VZWD-B-L-M22C-M-G18-...-30-...-R1	25	30	15,4	G 1/8	M6	73,3	60,8	43,4	4,8	42	44	7
VZWD-B-L-M22C-M-G14-...-30-...-R1				G 1/4								
VZWD-B-L-M22C-M-G18-...-36-...-R1		36		4,9					G 1/8			
VZWD-B-L-M22C-M-G14-...-36-...-R1									G 1/4			

Dimensions

Dimensions – Brass housing, standard

Download CAD data www.festo.com

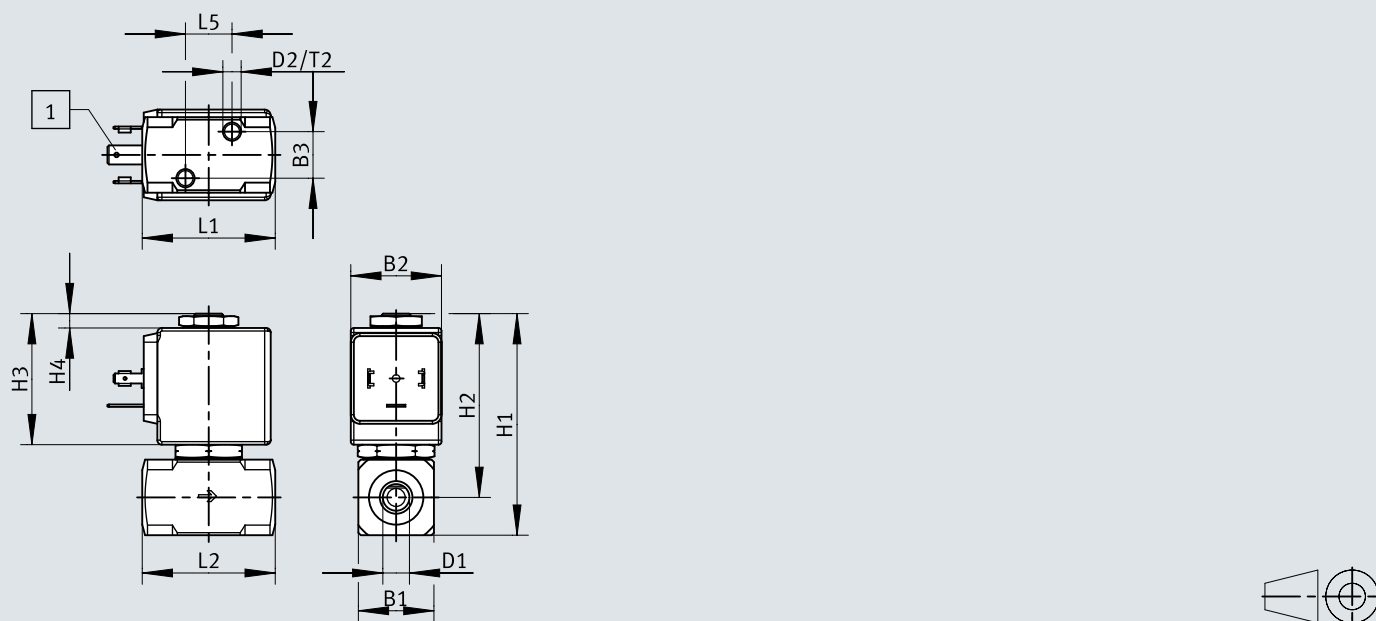


[1] Type A plug pattern

	B1	B2	B3	D1	D2	H1	H2	H3	H4	L1	L2	T2
VZWD-B-L-M22C-M-N18-...-30-...	28,5	30	12,7	NPT 1/8	M4	73,5	63,5	43,4	4,8	42	40,5	5
VZWD-B-L-M22C-M-N14-...-30-...		36		NPT1/4					4,9	47,8		
VZWD-B-L-M22C-M-N18-...-36-...				NPT 1/8			63					
VZWD-B-L-M22C-M-N14-...-36-...		NPT1/4										

Dimensions

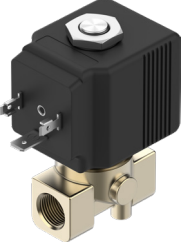
Dimensions – Stainless steel housing,....-R1

Download CAD data www.festo.com

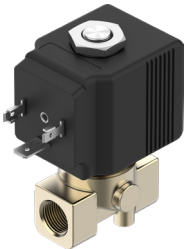
[1] Type A plug pattern

	B1	B2	B3	D1	D2	H1	H2	H3	H4	L1	L2	T2
VZWD-B-L-M22C-M-N18-...-30-...-R1	25	30	15,4	NPT 1/8	M6	73,3	60,8	43,4	4,8	42	44	7
VZWD-B-L-M22C-M-N14-...-30-...-R1				NPT 1/4								
VZWD-B-L-M22C-M-N18-...-36-...-R1		36		4,9					NPT 1/8			
VZWD-B-L-M22C-M-N14-...-36-...-R1									NPT 1/4			

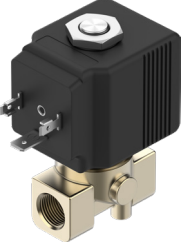
Ordering data


Standard version, brass						
	Connection Process valve	Nominal size	Medium pressure	Part no.	Type	
	G1/8	1 mm	0 ... 80 bar	8214423	VZWD-B-L-M22C-M-G18-10-V-30-1-A1-80	
				8214466	VZWD-B-L-M22C-M-G18-10-V-30-2A-A1-80	
				★ 8214549	VZWD-B-L-M22C-M-G18-10-V-30-3A-A1-80	
			0 ... 100 bar	8214439	VZWD-B-L-M22C-M-G18-10-V-36-3A-A1-100	
				8214640	VZWD-B-L-M22C-M-G18-10-V-36-2A-A1-100	
				★ 8214561	VZWD-B-L-M22C-M-G18-10-V-36-1-A1-100	
		1.5 mm	0 ... 26 bar	8214550	VZWD-B-L-M22C-M-G18-15-V-30-1-A1-26	
				8214645	VZWD-B-L-M22C-M-G18-15-V-30-2A-A1-30	
			0 ... 30 bar	8214559	VZWD-B-L-M22C-M-G18-15-V-30-3A-A1-30	
				8214602	VZWD-B-L-M22C-M-G18-15-V-36-1-A1-80	
			0 ... 80 bar	8214572	VZWD-B-L-M22C-M-G18-15-V-36-3A-A1-80	
				8214607	VZWD-B-L-M22C-M-G18-15-V-36-2A-A1-80	
		2 mm	0 ... 20 bar	8214496	VZWD-B-L-M22C-M-G18-20-V-30-1-A1-20	
				8214631	VZWD-B-L-M22C-M-G18-20-V-30-2A-A1-22	
			0 ... 22 bar	8214591	VZWD-B-L-M22C-M-G18-20-V-30-3A-A1-22	
				8214552	VZWD-B-L-M22C-M-G18-20-V-36-1-A1-40	
			0 ... 40 bar	8214474	VZWD-B-L-M22C-M-G18-20-V-36-3A-A1-50	
				8214430	VZWD-B-L-M22C-M-G18-20-V-36-2A-A1-50	
		2.5 mm	0 ... 33 bar	8214421	VZWD-B-L-M22C-M-G18-25-V-36-1-A1-33	
			0 ... 35 bar	8214617	VZWD-B-L-M22C-M-G18-25-V-36-3A-A1-35	
				8214570	VZWD-B-L-M22C-M-G18-25-V-36-2A-A1-35	
		3 mm	0 ... 15 bar	8214574	VZWD-B-L-M22C-M-G18-30-V-30-2A-A1-15	
				8214476	VZWD-B-L-M22C-M-G18-30-V-30-3A-A1-15	
			0 ... 24 bar	8214623	VZWD-B-L-M22C-M-G18-30-V-36-1-A1-24	
		4 mm	0 ... 8 bar	8214608	VZWD-B-L-M22C-M-G18-40-V-30-3A-A1-8	
				8214558	VZWD-B-L-M22C-M-G18-40-V-30-2A-A1-8	
			0 ... 15 bar	★ 8214537	VZWD-B-L-M22C-M-G18-40-V-36-1-A1-15	
		5.2 mm	0 ... 9 bar	8214529	VZWD-B-L-M22C-M-G18-52-V-36-1-A1-9	
			0 ... 10 bar	8214454	VZWD-B-L-M22C-M-G18-52-V-36-2A-A1-10	
				8214610	VZWD-B-L-M22C-M-G18-52-V-36-3A-A1-10	
		6.4 mm	0 ... 4.5 bar	8214436	VZWD-B-L-M22C-M-G18-64-V-36-1-A1-4.5	
			0 ... 5 bar	8214491	VZWD-B-L-M22C-M-G18-64-V-36-2A-A1-5	
				8214425	VZWD-B-L-M22C-M-G18-64-V-36-3A-A1-5	
		G1/4	1 mm	0 ... 80 bar	8214446	VZWD-B-L-M22C-M-G14-10-V-30-1-A1-80
					8214472	VZWD-B-L-M22C-M-G14-10-V-30-3A-A1-80
					8214616	VZWD-B-L-M22C-M-G14-10-V-30-2A-A1-80
				0 ... 100 bar	★ 8214443	VZWD-B-L-M22C-M-G14-10-V-36-1-A1-100
					8214422	VZWD-B-L-M22C-M-G14-10-V-36-2A-A1-100
					8214444	VZWD-B-L-M22C-M-G14-10-V-36-3A-A1-100
			1.5 mm	0 ... 26 bar	8214533	VZWD-B-L-M22C-M-G14-15-V-30-1-A1-26
					8214520	VZWD-B-L-M22C-M-G14-15-V-30-2A-A1-30
				0 ... 30 bar	8214560	VZWD-B-L-M22C-M-G14-15-V-30-3A-A1-30
8214490	VZWD-B-L-M22C-M-G14-15-V-36-1-A1-80					
0 ... 80 bar	8214633			VZWD-B-L-M22C-M-G14-15-V-36-2A-A1-80		
	8214573			VZWD-B-L-M22C-M-G14-15-V-36-3A-A1-80		
2 mm	0 ... 20 bar		8214449	VZWD-B-L-M22C-M-G14-20-V-30-1-A1-20		
			8214452	VZWD-B-L-M22C-M-G14-20-V-30-3A-A1-22		
	0 ... 22 bar		8214426	VZWD-B-L-M22C-M-G14-20-V-30-2A-A1-22		
			8214546	VZWD-B-L-M22C-M-G14-20-V-36-1-A1-40		
	0 ... 40 bar		8214555	VZWD-B-L-M22C-M-G14-20-V-36-3A-A1-50		
			8214521	VZWD-B-L-M22C-M-G14-20-V-36-2A-A1-50		

Ordering data


Standard version, brass						
	Connection Process valve	Nominal size	Medium pressure	Part no.	Type	
	G1/4	2.5 mm	0 ... 14 bar	8214590	VZWD-B-L-M22C-M-G14-25-V-30-1-A1-14	
			0 ... 16 bar	8214431	VZWD-B-L-M22C-M-G14-25-V-30-2A-A1-16	
				8214458	VZWD-B-L-M22C-M-G14-25-V-30-3A-A1-16	
			0 ... 33 bar	8214637	VZWD-B-L-M22C-M-G14-25-V-36-1-A1-33	
			0 ... 35 bar	8214544	VZWD-B-L-M22C-M-G14-25-V-36-3A-A1-35	
				8214545	VZWD-B-L-M22C-M-G14-25-V-36-2A-A1-35	
		3 mm	0 ... 15 bar	8214625	VZWD-B-L-M22C-M-G14-30-V-30-3A-A1-15	
				8214605	VZWD-B-L-M22C-M-G14-30-V-30-2A-A1-15	
		4 mm	0 ... 24 bar	8214604	VZWD-B-L-M22C-M-G14-30-V-36-1-A1-24	
			0 ... 8 bar	8214448	VZWD-B-L-M22C-M-G14-40-V-30-3A-A1-8	
		5.2 mm		8214643	VZWD-B-L-M22C-M-G14-40-V-30-3A-A1-8	
			0 ... 15 bar	8214650	VZWD-B-L-M22C-M-G14-40-V-36-1-A1-15	
			0 ... 9 bar	★ 8214457	VZWD-B-L-M22C-M-G14-52-V-36-1-A1-9	
		6.4 mm	0 ... 10 bar	8214505	VZWD-B-L-M22C-M-G14-52-V-36-3A-A1-10	
				8214440	VZWD-B-L-M22C-M-G14-52-V-36-2A-A1-10	
			0 ... 4.5 bar	8214628	VZWD-B-L-M22C-M-G14-64-V-36-1-A1-4.5	
		0 ... 5 bar		8214484	VZWD-B-L-M22C-M-G14-64-V-36-3A-A1-5	
				8214632	VZWD-B-L-M22C-M-G14-64-V-36-2A-A1-5	
			1/8 NPT	1 mm	0 ... 80 bar	8214606
					8214473	VZWD-B-L-M22C-M-N18-10-V-30-2A-A1-80
					8214556	VZWD-B-L-M22C-M-N18-10-V-30-1-A1-80
		0 ... 100 bar			8214432	VZWD-B-L-M22C-M-N18-10-V-36-2A-A1-100
				8214615	VZWD-B-L-M22C-M-N18-10-V-36-3A-A1-100	
				★ 8214557	VZWD-B-L-M22C-M-N18-10-V-36-1-A1-100	
	1.5 mm	0 ... 26 bar		8214519	VZWD-B-L-M22C-M-N18-15-V-30-1-A1-26	
		0 ... 30 bar		8214618	VZWD-B-L-M22C-M-N18-15-V-30-3A-A1-30	
				8214488	VZWD-B-L-M22C-M-N18-15-V-30-2A-A1-30	
		0 ... 80 bar		8214575	VZWD-B-L-M22C-M-N18-15-V-36-1-A1-80	
				8214500	VZWD-B-L-M22C-M-N18-15-V-36-2A-A1-80	
				8214501	VZWD-B-L-M22C-M-N18-15-V-36-3A-A1-80	
	2 mm	0 ... 20 bar	8214624	VZWD-B-L-M22C-M-N18-20-V-30-1-A1-20		
		0 ... 22 bar	8214584	VZWD-B-L-M22C-M-N18-20-V-30-3A-A1-22		
			8214598	VZWD-B-L-M22C-M-N18-20-V-30-2A-A1-22		
		0 ... 40 bar	8214595	VZWD-B-L-M22C-M-N18-20-V-36-1-A1-40		
		0 ... 50 bar	8214599	VZWD-B-L-M22C-M-N18-20-V-36-3A-A1-50		
		8214566	VZWD-B-L-M22C-M-N18-20-V-36-2A-A1-50			
	2.5 mm	0 ... 33 bar	8214648	VZWD-B-L-M22C-M-N18-25-V-36-1-A1-33		
		0 ... 35 bar	8214469	VZWD-B-L-M22C-M-N18-25-V-36-3A-A1-35		
			8214468	VZWD-B-L-M22C-M-N18-25-V-36-2A-A1-35		
	3 mm	0 ... 15 bar	8214592	VZWD-B-L-M22C-M-N18-30-V-30-3A-A1-15		
			8214630	VZWD-B-L-M22C-M-N18-30-V-30-2A-A1-15		
		0 ... 24 bar	8214528	VZWD-B-L-M22C-M-N18-30-V-36-1-A1-24		
	4 mm	0 ... 8 bar	8214483	VZWD-B-L-M22C-M-N18-40-V-30-3A-A1-8		
			8214541	VZWD-B-L-M22C-M-N18-40-V-30-2A-A1-8		
		0 ... 15 bar	8214475	VZWD-B-L-M22C-M-N18-40-V-36-1-A1-15		
	5.2 mm	0 ... 9 bar	8214634	VZWD-B-L-M22C-M-N18-52-V-36-1-A1-9		
		0 ... 10 bar	8214459	VZWD-B-L-M22C-M-N18-52-V-36-2A-A1-10		
		8214636	VZWD-B-L-M22C-M-N18-52-V-36-3A-A1-10			
6.4 mm	0 ... 4.5 bar	8214579	VZWD-B-L-M22C-M-N18-64-V-36-1-A1-4.5			
	0 ... 5 bar	8214467	VZWD-B-L-M22C-M-N18-64-V-36-3A-A1-5			
		8214524	VZWD-B-L-M22C-M-N18-64-V-36-2A-A1-5			

Ordering data

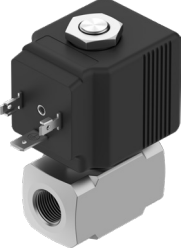
Standard version, brass					
	Connection Process valve	Nominal size	Medium pressure	Part no.	Type
	1/4 NPT	1 mm	0 ... 80 bar	8214527	VZWD-B-L-M22C-M-N14-10-V-30-2A-A1-80
				8214638	VZWD-B-L-M22C-M-N14-10-V-30-3A-A1-80
				8214535	VZWD-B-L-M22C-M-N14-10-V-30-1-A1-80
			0 ... 100 bar	8214470	VZWD-B-L-M22C-M-N14-10-V-36-3A-A1-100
				8214567	VZWD-B-L-M22C-M-N14-10-V-36-2A-A1-100
				8214601	VZWD-B-L-M22C-M-N14-10-V-36-1-A1-100
		1.5 mm	0 ... 26 bar	8214451	VZWD-B-L-M22C-M-N14-15-V-30-1-A1-26
			0 ... 30 bar	8214587	VZWD-B-L-M22C-M-N14-15-V-30-3A-A1-30
				8214597	VZWD-B-L-M22C-M-N14-15-V-30-2A-A1-30
			0 ... 80 bar	8214503	VZWD-B-L-M22C-M-N14-15-V-36-2A-A1-80
				8214513	VZWD-B-L-M22C-M-N14-15-V-36-3A-A1-80
				8214532	VZWD-B-L-M22C-M-N14-15-V-36-1-A1-80
		2 mm	0 ... 20 bar	8214455	VZWD-B-L-M22C-M-N14-20-V-30-1-A1-20
			0 ... 22 bar	8214438	VZWD-B-L-M22C-M-N14-20-V-30-2A-A1-22
				8214588	VZWD-B-L-M22C-M-N14-20-V-30-3A-A1-22
			0 ... 40 bar	8214478	VZWD-B-L-M22C-M-N14-20-V-36-1-A1-40
			0 ... 50 bar	8214594	VZWD-B-L-M22C-M-N14-20-V-36-3A-A1-50
				8214489	VZWD-B-L-M22C-M-N14-20-V-36-2A-A1-50
		2.5 mm	0 ... 14 bar	8214639	VZWD-B-L-M22C-M-N14-25-V-30-1-A1-14
			0 ... 16 bar	8214419	VZWD-B-L-M22C-M-N14-25-V-30-2A-A1-16
				8214646	VZWD-B-L-M22C-M-N14-25-V-30-3A-A1-16
			0 ... 33 bar	8214499	VZWD-B-L-M22C-M-N14-25-V-36-1-A1-33
			0 ... 35 bar	8214585	VZWD-B-L-M22C-M-N14-25-V-36-3A-A1-35
				8214441	VZWD-B-L-M22C-M-N14-25-V-36-2A-A1-35
		3 mm	0 ... 15 bar	8214596	VZWD-B-L-M22C-M-N14-30-V-30-3A-A1-15
			0 ... 24 bar	8214465	VZWD-B-L-M22C-M-N14-30-V-30-2A-A1-15
				8214480	VZWD-B-L-M22C-M-N14-30-V-36-1-A1-24
		4 mm	0 ... 8 bar	8214510	VZWD-B-L-M22C-M-N14-40-V-30-3A-A1-8
			0 ... 15 bar	8214642	VZWD-B-L-M22C-M-N14-40-V-30-2A-A1-8
				8214609	VZWD-B-L-M22C-M-N14-40-V-36-1-A1-15
		5.2 mm	0 ... 9 bar	8214429	VZWD-B-L-M22C-M-N14-52-V-36-1-A1-9
			0 ... 10 bar	8214578	VZWD-B-L-M22C-M-N14-52-V-36-3A-A1-10
8214562	VZWD-B-L-M22C-M-N14-52-V-36-2A-A1-10				
6.4 mm	0 ... 4.5 bar	8214471	VZWD-B-L-M22C-M-N14-64-V-36-1-A1-4.5		
	0 ... 5 bar	8214603	VZWD-B-L-M22C-M-N14-64-V-36-3A-A1-5		
		8214548	VZWD-B-L-M22C-M-N14-64-V-36-2A-A1-5		

Stainless steel version					
	Connection Process valve	Nominal size	Medium pressure	Part no.	Type
	G1/8	1 mm	0 ... 100 bar	8214493	VZWD-B-L-M22C-M-G18-10-V-36-1-A1-100-R1
				8214564	VZWD-B-L-M22C-M-G18-10-V-36-3A-A1-100-R1
				8214494	VZWD-B-L-M22C-M-G18-10-V-36-2A-A1-100-R1
		1.5 mm	0 ... 80 bar	8214554	VZWD-B-L-M22C-M-G18-15-V-36-2A-A1-80-R1
				8214583	VZWD-B-L-M22C-M-G18-15-V-36-3A-A1-80-R1
				8214498	VZWD-B-L-M22C-M-G18-15-V-36-1-A1-80-R1
		2 mm	0 ... 40 bar	8214530	VZWD-B-L-M22C-M-G18-20-V-36-1-A1-40-R1
			0 ... 50 bar	8214620	VZWD-B-L-M22C-M-G18-20-V-36-2A-A1-50-R1
				8214464	VZWD-B-L-M22C-M-G18-20-V-36-3A-A1-50-R1
		2.5 mm	0 ... 33 bar	8214502	VZWD-B-L-M22C-M-G18-25-V-36-1-A1-33-R1

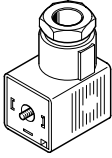
Ordering data

Stainless steel version						
	Connection Process valve	Nominal size	Medium pressure	Part no.	Type	
	G1/8	2.5 mm	0 ... 35 bar	8214460	VZWD-B-L-M22C-M-G18-25-V-36-3A-A1-35-R1	
				8214547	VZWD-B-L-M22C-M-G18-25-V-36-2A-A1-35-R1	
		3 mm	0 ... 15 bar	8214553	VZWD-B-L-M22C-M-G18-30-V-30-2A-A1-15-R1	
				8214542	VZWD-B-L-M22C-M-G18-30-V-30-3A-A1-15-R1	
			0 ... 24 bar	8214621	VZWD-B-L-M22C-M-G18-30-V-36-1-A1-24-R1	
				4 mm	0 ... 8 bar	8214626
		8214512	VZWD-B-L-M22C-M-G18-40-V-30-3A-A1-8-R1			
		5.2 mm	0 ... 9 bar	8214568	VZWD-B-L-M22C-M-G18-40-V-36-1-A1-15-R1	
				8214461	VZWD-B-L-M22C-M-G18-52-V-36-1-A1-9-R1	
			0 ... 10 bar	8214485	VZWD-B-L-M22C-M-G18-52-V-36-2A-A1-10-R1	
				8214581	VZWD-B-L-M22C-M-G18-52-V-36-3A-A1-10-R1	
		6.4 mm	0 ... 4.5 bar	8214531	VZWD-B-L-M22C-M-G18-64-V-36-1-A1-4.5-R1	
				8214569	VZWD-B-L-M22C-M-G18-64-V-36-3A-A1-5-R1	
			8214433	VZWD-B-L-M22C-M-G18-64-V-36-2A-A1-5-R1		
		G1/4	1 mm	0 ... 100 bar	8214614	VZWD-B-L-M22C-M-G14-10-V-36-1-A1-100-R1
					8214456	VZWD-B-L-M22C-M-G14-10-V-36-3A-A1-100-R1
					8214514	VZWD-B-L-M22C-M-G14-10-V-36-2A-A1-100-R1
			1.5 mm	0 ... 80 bar	8214577	VZWD-B-L-M22C-M-G14-15-V-36-3A-A1-80-R1
	8214487				VZWD-B-L-M22C-M-G14-15-V-36-1-A1-80-R1	
	8214486				VZWD-B-L-M22C-M-G14-15-V-36-2A-A1-80-R1	
	2 mm		0 ... 40 bar	8214576	VZWD-B-L-M22C-M-G14-20-V-36-1-A1-40-R1	
				8214611	VZWD-B-L-M22C-M-G14-20-V-36-3A-A1-50-R1	
			0 ... 50 bar	8214580	VZWD-B-L-M22C-M-G14-20-V-36-2A-A1-50-R1	
	2.5 mm		0 ... 33 bar	8214644	VZWD-B-L-M22C-M-G14-25-V-36-1-A1-33-R1	
				8214447	VZWD-B-L-M22C-M-G14-25-V-36-2A-A1-35-R1	
			0 ... 35 bar	8214523	VZWD-B-L-M22C-M-G14-25-V-36-3A-A1-35-R1	
	3 mm		0 ... 15 bar	8214538	VZWD-B-L-M22C-M-G14-30-V-30-3A-A1-15-R1	
				8214463	VZWD-B-L-M22C-M-G14-30-V-30-2A-A1-15-R1	
			0 ... 24 bar	8214506	VZWD-B-L-M22C-M-G14-30-V-36-1-A1-24-R1	
	4 mm		0 ... 8 bar	8214516	VZWD-B-L-M22C-M-G14-40-V-30-3A-A1-8-R1	
				8214450	VZWD-B-L-M22C-M-G14-40-V-30-2A-A1-8-R1	
			0 ... 15 bar	8214600	VZWD-B-L-M22C-M-G14-40-V-36-1-A1-15-R1	
	5.2 mm		0 ... 9 bar	★ 8214612	VZWD-B-L-M22C-M-G14-52-V-36-1-A1-9-R1	
				8214453	VZWD-B-L-M22C-M-G14-52-V-36-3A-A1-10-R1	
			0 ... 10 bar	8214593	VZWD-B-L-M22C-M-G14-52-V-36-2A-A1-10-R1	
	6.4 mm		0 ... 4.5 bar	★ 8214497	VZWD-B-L-M22C-M-G14-64-V-36-1-A1-4.5-R1	
				8214427	VZWD-B-L-M22C-M-G14-64-V-36-2A-A1-5-R1	
			0 ... 5 bar	8214481	VZWD-B-L-M22C-M-G14-64-V-36-3A-A1-5-R1	
	1/8 NPT		1 mm	0 ... 100 bar	8214517	VZWD-B-L-M22C-M-N18-10-V-36-2A-A1-100-R1
					8214651	VZWD-B-L-M22C-M-N18-10-V-36-1-A1-100-R1
					8214586	VZWD-B-L-M22C-M-N18-10-V-36-3A-A1-100-R1
		1.5 mm	0 ... 80 bar	8214442	VZWD-B-L-M22C-M-N18-15-V-36-2A-A1-80-R1	
				8214526	VZWD-B-L-M22C-M-N18-15-V-36-3A-A1-80-R1	
				8214536	VZWD-B-L-M22C-M-N18-15-V-36-1-A1-80-R1	
		2 mm	0 ... 40 bar	8214424	VZWD-B-L-M22C-M-N18-20-V-36-1-A1-40-R1	
8214565				VZWD-B-L-M22C-M-N18-20-V-36-2A-A1-50-R1		
0 ... 50 bar			8214434	VZWD-B-L-M22C-M-N18-20-V-36-3A-A1-50-R1		
2.5 mm		0 ... 33 bar	8214504	VZWD-B-L-M22C-M-N18-25-V-36-1-A1-33-R1		
			8214619	VZWD-B-L-M22C-M-N18-25-V-36-2A-A1-35-R1		
		0 ... 35 bar	8214445	VZWD-B-L-M22C-M-N18-25-V-36-3A-A1-35-R1		
3 mm		0 ... 15 bar	8214613	VZWD-B-L-M22C-M-N18-30-V-30-2A-A1-15-R1		

Ordering data

Stainless steel version					
	Connection Process valve	Nominal size	Medium pressure	Part no.	Type
	1/8 NPT	3 mm	0 ... 15 bar	8214515	VZWD-B-L-M22C-M-N18-30-V-30-3A-A1-15-R1
			0 ... 24 bar	8214540	VZWD-B-L-M22C-M-N18-30-V-36-1-A1-24-R1
		4 mm	0 ... 8 bar	8214571	VZWD-B-L-M22C-M-N18-40-V-30-3A-A1-8-R1
				8214511	VZWD-B-L-M22C-M-N18-40-V-30-2A-A1-8-R1
			0 ... 15 bar	8214582	VZWD-B-L-M22C-M-N18-40-V-36-1-A1-15-R1
		5.2 mm	0 ... 9 bar	8214629	VZWD-B-L-M22C-M-N18-52-V-36-1-A1-9-R1
			0 ... 10 bar	8214492	VZWD-B-L-M22C-M-N18-52-V-36-2A-A1-10-R1
				8214622	VZWD-B-L-M22C-M-N18-52-V-36-3A-A1-10-R1
		6.4 mm	0 ... 4.5 bar	8214420	VZWD-B-L-M22C-M-N18-64-V-36-1-A1-4.5-R1
			0 ... 5 bar	8214479	VZWD-B-L-M22C-M-N18-64-V-36-3A-A1-5-R1
				8214507	VZWD-B-L-M22C-M-N18-64-V-36-2A-A1-5-R1
		1/4 NPT	1 mm	0 ... 100 bar	8214437
	8214649				VZWD-B-L-M22C-M-N14-10-V-36-2A-A1-100-R1
	8214525				VZWD-B-L-M22C-M-N14-10-V-36-1-A1-100-R1
	1.5 mm		0 ... 80 bar	8214563	VZWD-B-L-M22C-M-N14-15-V-36-1-A1-80-R1
				8214435	VZWD-B-L-M22C-M-N14-15-V-36-3A-A1-80-R1
				8214518	VZWD-B-L-M22C-M-N14-15-V-36-2A-A1-80-R1
	2 mm		0 ... 40 bar	8214539	VZWD-B-L-M22C-M-N14-20-V-36-1-A1-40-R1
			0 ... 50 bar	8214551	VZWD-B-L-M22C-M-N14-20-V-36-2A-A1-50-R1
				8214647	VZWD-B-L-M22C-M-N14-20-V-36-3A-A1-50-R1
	2.5 mm		0 ... 33 bar	8214534	VZWD-B-L-M22C-M-N14-25-V-36-1-A1-33-R1
			0 ... 35 bar	8214589	VZWD-B-L-M22C-M-N14-25-V-36-3A-A1-35-R1
				8214482	VZWD-B-L-M22C-M-N14-25-V-36-2A-A1-35-R1
	3 mm		0 ... 15 bar	8214462	VZWD-B-L-M22C-M-N14-30-V-30-2A-A1-15-R1
			0 ... 24 bar	8214509	VZWD-B-L-M22C-M-N14-30-V-30-3A-A1-15-R1
				8214641	VZWD-B-L-M22C-M-N14-30-V-36-1-A1-24-R1
	4 mm		0 ... 8 bar	8214418	VZWD-B-L-M22C-M-N14-40-V-30-3A-A1-8-R1
				8214635	VZWD-B-L-M22C-M-N14-40-V-30-2A-A1-8-R1
			0 ... 15 bar	8214627	VZWD-B-L-M22C-M-N14-40-V-36-1-A1-15-R1
	5.2 mm		0 ... 9 bar	8214495	VZWD-B-L-M22C-M-N14-52-V-36-1-A1-9-R1
			0 ... 10 bar	8214428	VZWD-B-L-M22C-M-N14-52-V-36-2A-A1-10-R1
				8214477	VZWD-B-L-M22C-M-N14-52-V-36-3A-A1-10-R1
6.4 mm	0 ... 4.5 bar		8214543	VZWD-B-L-M22C-M-N14-64-V-36-1-A1-4.5-R1	
	0 ... 5 bar		8214508	VZWD-B-L-M22C-M-N14-64-V-36-3A-A1-5-R1	
			8214522	VZWD-B-L-M22C-M-N14-64-V-36-2A-A1-5-R1	

Accessories

Plug socket MSSD-C					
	Cable fitting	Cable diameter	Product weight	Part no.	Type
	Pg 9	6 ... 8 mm	22 g	34583	MSSD-C