

## Proximity switches for T-slot

**FESTO**



## Product range overview

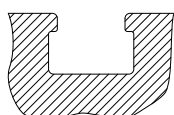
| Design     | Type of mounting   | Measuring principle | Type            | Operating voltage range | Switching output       | Switching element function      | → Page      |   |
|------------|--|---------------------|-----------------|-------------------------|------------------------|---------------------------------|-------------|---|
| For T-slot | Standard   |                     |                 |                         |                        |                                 |             |   |
|            | Screw-clamped, inserted in the slot from above                   | Magnetic Hall       | SDBT-MSX        | 10 ... 30 V DC          | PNP/NPN, switchable    | N/O/<br>N/C contact, switchable | –           |   |
|            | Inserted in the slot from above, flush with the cylinder profile | Magneto-resistive   | SMT-8M-A        | 5 ... 30 V DC           | PNP                    | N/O contact                     | –           |   |
|            |  |                     |                 |                         |                        | N/C contact                     |             |   |
|            |  |                     |                 |                         | NPN                    | N/O contact                     |             |   |
|            |  |                     |                 |                         | Non-contacting, 2-wire | N/O contact                     |             |   |
|            | Inserted in the slot from above, flush with the cylinder profile | Magnetic reed       | SME-8M          | 5 ... 30 V AC/DC        | Contacting, bipolar    | N/O contact<br>N/C contact      | –           |   |
|            | Inserted in the slot lengthwise, flush with the cylinder profile | Magnetic reed       | SME-8           | 12 ... 30 V AC/DC       | Contacting, bipolar    | N/O contact<br>N/C contact      |             | – |
|            |  |                     |                 | 3 ... 230 V AC/DC       |                        | N/O contact                     | –           |   |
|            | Inserted in the slot lengthwise                                  | Magneto-resistive   | SMT-8G          | 10 ... 30 V DC          | PNP, NPN               | N/O contact                     | –           |   |
|            |  | Magneto-resistive   | SMT-8-SL        | 10 ... 30 V DC          | PNP                    | N/O contact                     | –           |   |
|            |  | Magnetic reed       | SME-8-SL        | 10 ... 30 V AC/DC       | Contacting, bipolar    | N/O contact                     | –           |   |
|            | Inserted in the slot from above                                  | Magnetic reed       | SME-8-FM        | 10 ... 30 V AC/DC       | Contacting, bipolar    | N/O contact                     | –           |   |
|            | With accessories   | Magneto-resistive   | SMT0-8E         | 10 ... 30 V DC          | PNP                    | N/O contact                     | –           |   |
|            |  |                     |                 |                         | NPN                    |                                 |             |   |
|            |  | Magnetic reed       | SME0-8E         | 12 ... 30 V DC          | Contacting, bipolar    | N/O contact                     | 7           |   |
|            |  |                     |                 | 3 ... 250 V DC          |                        |                                 |             |   |
|            |  |                     |                 | 3 ... 230 V AC          |                        |                                 |             |   |
|            | Corrosion-resistant  |                     |                 |                         |                        |                                 |             |   |
|            | Inserted in the slot from above, flush with the cylinder profile | Magneto-resistive   | CRSMT-8M        | 5 ... 30 V DC           | PNP                    |                                 | N/O contact | – |
|            | Welding-field-resistant  |                     |                 |                         |                        |                                 |             |   |
|            | Inserted in the slot from above, screw-clamped                   | Magneto-resistive   | SDBT-BSW        | 10 ... 30 V DC          | PNP                    | N/O contact                     | –           |   |
|            |  |                     |                 |                         | NPN                    |                                 |             |   |
|            |  |                     |                 |                         | Non-contacting, 2-wire |                                 |             |   |
|            | With accessories   | Magneto-inductive   | SMTSO-8E        | 10 ... 30 V DC          | PNP                    | N/O contact                     | –           |   |
|            |  |                     |                 |                         | NPN                    |                                 |             |   |
|            | Heat-resistant up to 120°C                                       |                     |                 |                         |                        |                                 |             |   |
|            | Inserted in the slot lengthwise, flush with the cylinder profile | Magnetic reed       | SME-8-...S6     | 0 ... 30 V AC/DC        | Contacting, bipolar    | N/O contact                     | –           |   |
|            | With accessories   | Magnetic reed       | SME0-8E-...S6   | 0 ... 30 V DC           | Contacting             | N/O contact                     | 7           |   |
|            |  |                     |                 | 0 ... 30 V AC           |                        |                                 |             |   |
|            | To EU Explosion Protection Directive (ATEX)                      |                     |                 |                         |                        |                                 |             |   |
|            | Inserted in the slot from above, screw-clamped                   | Magneto-resistive   | SDBT-MS-...-EX6 | 8.2 V DC                | NAMUR                  |                                 | NAMUR       | – |

## Product range overview

| Design     | Type of mounting   | Measuring principle | Type    | Operating voltage range | Switching output       | Switching element function | → Page |
|------------|--|---------------------|---------|-------------------------|------------------------|----------------------------|--------|
| For C-slot | <b>Standard</b>  |                     |         |                         |                        |                            |        |
|            | Inserted in the slot from above, flush with the cylinder profile | Magneto-resistive   | SMT-10M | 10 ... 30 V DC          | PNP                    | N/O contact                | C-slot |
|            |  |                     |         |                         | NPN                    |                            |        |
|            |  |                     |         |                         | Non-contacting, 2-wire |                            |        |
|            | Inserted in the slot lengthwise                                  | Magnetic reed       | SME-10M | 5 ... 30 V AC/DC        | Contacting, bipolar    | N/O contact                |        |
|            |  | Magneto-resistive   | SMT-10G | 10 ... 30 V DC          | PNP                    | N/O contact                |        |
|            |  | Magnetic reed       | SME-10  | 12 ... 27 V AC/DC       | Contacting             | N/O contact                |        |

## T-slot switches can be used for drives with T-slot

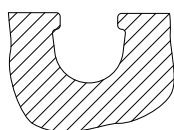
## Exceptions



- DFM-B: SMT-8E, SMTSO-8E, SME-8E and SMP-8E cannot be used
- DHDS: SME-8M can only be used on  $\varnothing 50$
- DHPS: SME-8M can only be used on  $\varnothing 20 \dots 35$
- HGDD-63-A: SMT-8M-A cannot be used
- HGPT-B: only SMT-8G can be used from size 40 and upwards
- SDBT-BSW- ... -PU/NU can only be used on a limited number of drive series. Page → 53

## C-slot switches can be used for drives with C-slot

## Exceptions



- ADVC  $\varnothing 100$ : SMT-10M and SME-10M cannot be used (ADVC has a T-slot and C-slot)
- DSM/DSM-B-6/8/10: SME-10M cannot be used
- DSM/DSM-B-10/16: SMT-10M cannot be used
- HGPT-B: only SMT-10G can be used for sizes up to and including size 35

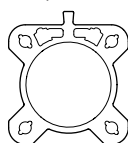
## For drives with sensor rail: these are available with 2 cylinder barrel contours

Only T-slot switches CRSMT-8M, SMT-8M-A and SDBT-MS- ... -EX6 can be used, and only with the identified profile.

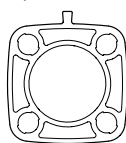
CRSMT-8M and SMT-8M-A can be used for all diameters; SDBT-MS- ... -EX6 cannot be used for diameters 40 and 50.

Example: DSBF

Example: CDC

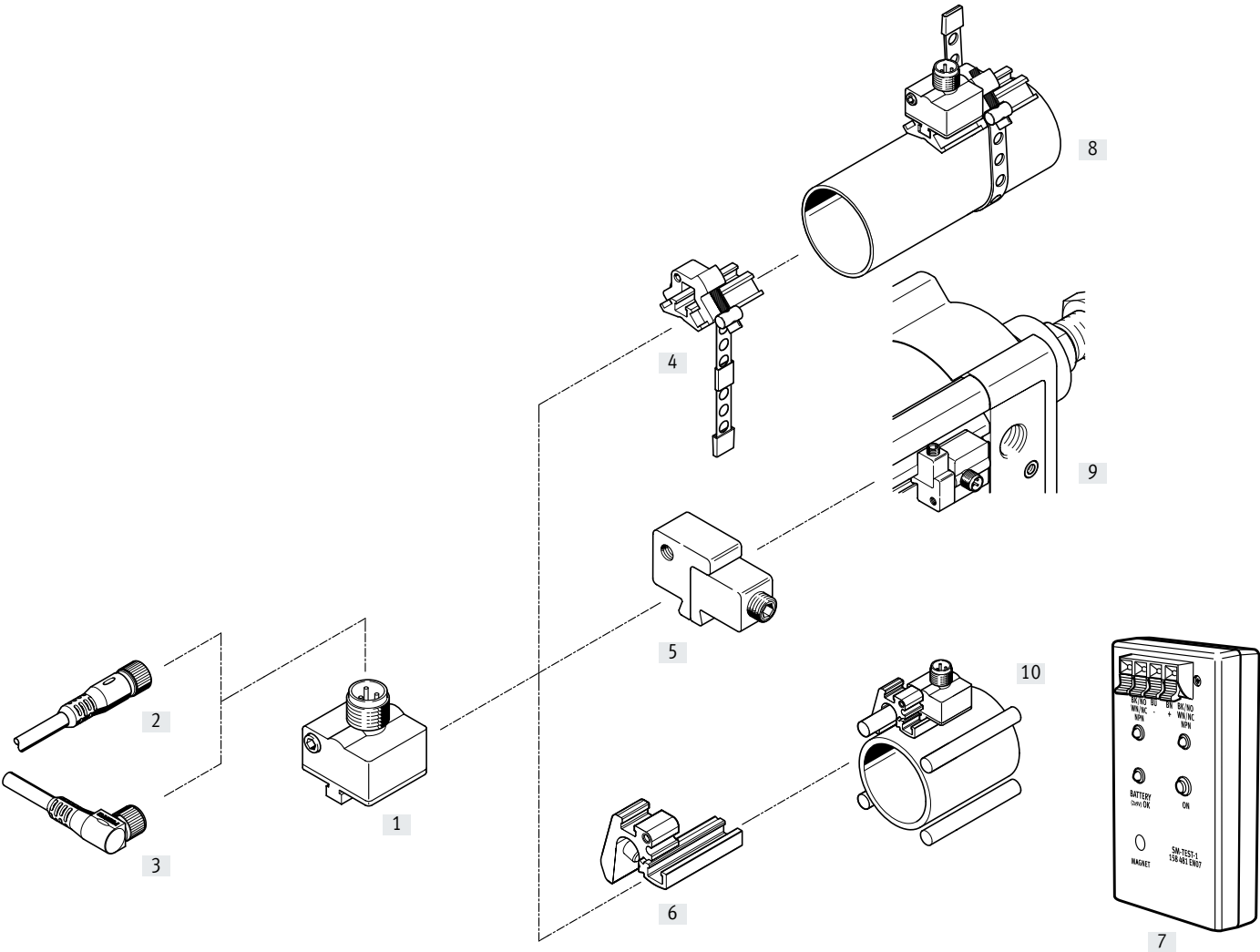


Suitable



Not suitable

Peripherals overview



## Peripherals overview

| Mounting components and accessories |                             | → Page | Mounting components and accessories  |  | → Page |
|-------------------------------------|-----------------------------|--------|--------------------------------------|--|--------|
| <b>Proximity switches</b>           |                             |        | <b>Mounting kits and accessories</b> |  |        |
| [1]                                 | SMEO-8E, with cable or plug | 7      | [4]                                  | Mounting kit SMBR-8-8/100-S6, heat resistant | 11     |
|                                     |                             |        | [5]                                  | Mounting kit SMB-8E                          | 11     |
|                                     |                             |        | [6]                                  | Mounting SMBZ-8-...                          | 12     |
|                                     |                             |        | [7]                                  | Sensor tester SM-TEST-1                      | 13     |
|                                     |                             |        | –                                    | Positioning element SMM-8                    | 12     |
|                                     |                             |        | –                                    | Clip SMBK-8                                  | 13     |
|                                     |                             |        | –                                    | Inscription label ASLR                       | 13     |
|                                     |                             |        | –                                    | Safety clip NEAU                             | 13     |
|                                     |                             |        |                                      |  |        |
| <b>Connecting cables</b>            |                             |        | <b>Drives</b>                        |  |        |
| [2]                                 | NEBU-M...G...               | 13     | [8]                                  | Round cylinder                               | –      |
| [3]                                 | NEBU-M...W...               | 13     | [9]                                  | Standards-based cylinder DSBC                | –      |
|                                     |                             |        | [10]                                 | Drives with tie or mounting rod              | –      |

## Type codes

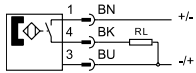
|      |                                     |  |
|------|-------------------------------------|--|
| 001  | Series                              |  |
| SMEO | Proximity sensor, magnetic, reed    |  |
| 002  | Design type                         |  |
| 8    | For T-slot                          |  |
| 003  | Sensor version                      |  |
| E    | Mounting with accessories           |  |
| 004  | Electrical connection, cable length |  |
| K    | Cable, 2.5 m or 7.5 m               |  |
| S    | Plug M8x1 with cable, 0.3 m         |  |
| M12  |                                     |  |

|     |                             |  |
|-----|-----------------------------|--|
| 005 | Switching status indication |  |
|     | None                        |  |
| LED | Yellow LED                  |  |
| 006 | Rated operating voltage     |  |
| 24  | 24 V DC                     |  |
| 230 | 230 V AC                    |  |
| 007 | Variant                     |  |
| S6  | Heat-resistant              |  |

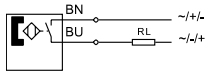
## Data sheet – Magnetic reed

Function

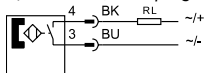
N/O contact, 3-wire, with plug



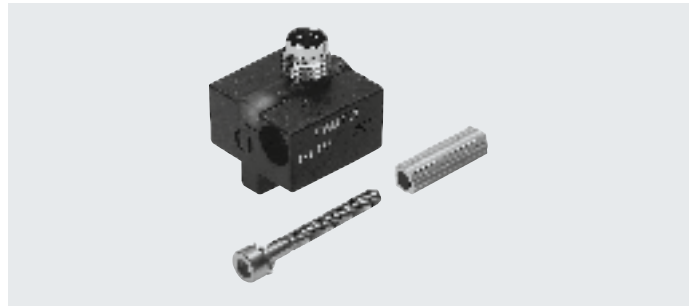
N/O contact, 2-wire, with cable



N/O contact, with plug



- Magnetic reed measuring principle
- Heat resistant variant



| General technical data                        | SMEO-8E-...-24                         | SMEO-8E-...-24-S6, heat-resistant | SMEO-8E-...-230  |
|---|--|-----------------------------------|--|
| Design  | For T-slot                             | For T-slot                        | For T-slot   |
| Conforms to standard                          | EN 60947-5-2                           | –                                 | EN 60947-5-2   |
| Certification                                 | RCM compliance mark                    | –                                 | RCM compliance mark  |
| CE marking<br>(see declaration of conformity) | To EU EMC Directive <sup>1)</sup><br>– | –                                 | To EU EMC Directive <sup>1)</sup><br>To EU Low Voltage Directive |
| Note on materials                             | Free of copper and PTFE                | Free of copper and PTFE           | Free of copper and PTFE  |
|   | RoHS-compliant                         | –                                 | –  |

1) For information about the area of use, see the EC declaration of conformity at: [www.festo.com/sp](http://www.festo.com/sp) → Certificates.

If the devices are subject to usage restrictions in residential, commercial or light-industrial environments, further measures for the reduction of the emitted interference may be necessary.

| Input signal/measuring element | SMEO-8E-...-24 | SMEO-8E-...-24-S6, heat-resistant | SMEO-8E-...-230 |
|--------------------------------|----------------|-----------------------------------|-----------------|
| Measuring principle            | Magnetic reed  | Magnetic reed                     | Magnetic reed   |
| Ambient temperature [°C]       | –40 ... +60    | –40 ... +120                      | –20 ... +60     |

| Switching output                        | SMEO-8E-S-...       | SMEO-8E-M-12-... | SMEO-8E-...-24-S6, heat-resistant | SMEO-8E-...-230      |
|---|---------------------|------------------|-----------------------------------|----------------------|
| Switching output                        | Contacting, bipolar | –                | Contacting                        | Contacting, bipolar  |
|   | –                   | –                | –                                 | Without LED function |
| Switching element function              | N/O contact         |                  |                                   |                      |
| Repetition accuracy                     | –                   | 0.2              | –                                 | 0.2                  |
| Reproducibility of switching value [mm] | ±0.1                | –                | ±0.1                              | –                    |
| Switch-on time [ms]                     | 0 ... 0.5           | –                | 0 ... 0.5                         | 0 ... 2              |
| Switch-off time [ms]                    | 0.03                | –                | 0.03                              | 0.03                 |
| Max. switching frequency [Hz]           | 800                 | –                | 500                               | 500                  |
| Max. output current [mA]                | 500                 | –                | 500                               | 120                  |
| Max. switching capacity DC [W]          | 10                  | –                | 10                                | 10                   |
| Max. switching capacity AC [VA]         | 10                  | –                | 10                                | 10                   |
| Voltage drop [V]                        | –                   | –                | 0.5                               | 3.9                  |

| Output, additional data      |              |
|------------------------------|--------------|
| Short circuit current rating | No           |
| Overload protection          | Not provided |

| Electronics                    | SMEO-8E-...-24 | SMEO-8E-...-24-S6, heat-resistant | SMEO-8E-...-230 |
|--------------------------------|----------------|-----------------------------------|-----------------|
| Operating voltage range DC [V] | 12 ... 30      | 0 ... 30                          | 3 ... 250       |
| Operating voltage range AC [V] | 12 ... 30      | 0 ... 30                          | 3 ... 230       |
| Reverse polarity protection    | No             | For all electrical connections    | No              |

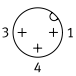
## Data sheet – Magnetic reed

| Electromechanics                       |                     |                                     |                                    |                                     |
|--|---------------------|-------------------------------------|------------------------------------|-------------------------------------|
| Type                                   | SMEO-8E-S-LED-24    | SMEO-8E-M12-LED-24                  | SMEO-8E-K-24-S6,<br>heat-resistant | SMEO-8E-M12-LED-230                 |
| Electrical connection                  | Plug M8x1, 3-pin    | Plug M12x1, 3-pin                   | Cable, 2-wire                      | Plug M12x1, 3-pin                   |
| Connection technology                  | –                   | M12x1, A-coded to<br>EN 61076-2-101 | –                                  | M12x1, A-coded to<br>EN 61076-2-101 |
| Number of pins/wires                   | –                   | 3                                   | –                                  | 3                                   |
| Type of mounting                       | –                   | Screw-type lock                     | –                                  | Screw-type lock                     |
| Outlet direction of connection         | Lateral             | Lateral                             | Lateral                            | In-line                             |
| Information on materials: Pin contacts | Nickel-plated brass | Brass                               | –                                  | –                                   |
| Cable length [m]                       | –                   | –                                   | 2.5                                | –                                   |
| Information on materials: Cable sheath | –                   | PUR                                 | TPE-S                              | –                                   |

## Pin allocation to EN 60947-5-2

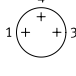
M12x1, 3-pin

N/O contact

|  | Pin | Wire colour | Allocation |
|--|-----|-------------|------------|
|  | 1   | Brown       | +          |
|  | 3   | Blue        | –          |
|  | 4   | Black       | Output     |

M8x1, 3-pin, 24 V

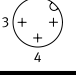
N/O contact

|   | Pin | Wire colour | Allocation |
|---|-----|-------------|------------|
|  | 1   | Brown       | +          |
|   | 3   | Blue        | –          |
|   | 4   | Black       | Output     |

## Pin allocation to EN 60947-5-2

M12x1, 3-pin, 230 V

N/O contact

|  | Pin | Wire colour | Allocation |
|--|-----|-------------|------------|
|  | 4   | Black       | ~ / +      |
|  | 3   | Blue        | ~ / –      |
|  |     |             |            |

## Mechanics

| Type                              | SMEO-8E-S-LED-24           | SMEO-8E-M12-LED-24         | SMEO-8E-K-24-S6,<br>heat-resistant | SMEO-8E-M12-LED-230        |
|-----------------------------------|----------------------------|----------------------------|------------------------------------|----------------------------|
| Type of mounting                  | With accessories           |                            | With accessories                   | With accessories           |
| Tightening torque [Nm]            | 0.5                        | 0.5                        | 0.5                                | 0.5                        |
| Information on materials: Housing | TPE-U(PU)                  | TPE-U(PU)                  | TPE-U(PU)                          | TPE-U(PU)                  |
|                                   | High-alloy stainless steel | High-alloy stainless steel | –                                  | High-alloy stainless steel |
|                                   | Wrought aluminium alloy    | Wrought aluminium alloy    |                                    | Wrought aluminium alloy    |
|                                   | Nickel-plated brass        | –                          |                                    | –                          |

## Display/operation

|                             | SMEO-8E-...-24 | SMEO-8E-...-24-S6, heat-resistant | SMEO-8E-...-230 |
|-----------------------------|----------------|-----------------------------------|-----------------|
| Switching status indication | Yellow LED     | –                                 | Yellow LED      |

## Immission/emission

|   | SMEO-8E-...-24 | SMEO-8E-...-24-S6, heat-resistant | SMEO-8E-...-230 |
|---|----------------|-----------------------------------|-----------------|
| Ambient temperature with flexible cable installation [°C] | –              | –40 ... +120                      | –               |
| Degree of protection                                      | IP65           | IP65                              | IP65            |
|   | IP67           | IP67                              | IP67            |
| Insulation voltage [V]                                    | –              | 50                                | –               |
| Surge resistance [kV]                                     | 0.8            | –                                 | 4               |
| Pollution degree  | 3              | 3                                 | 3               |

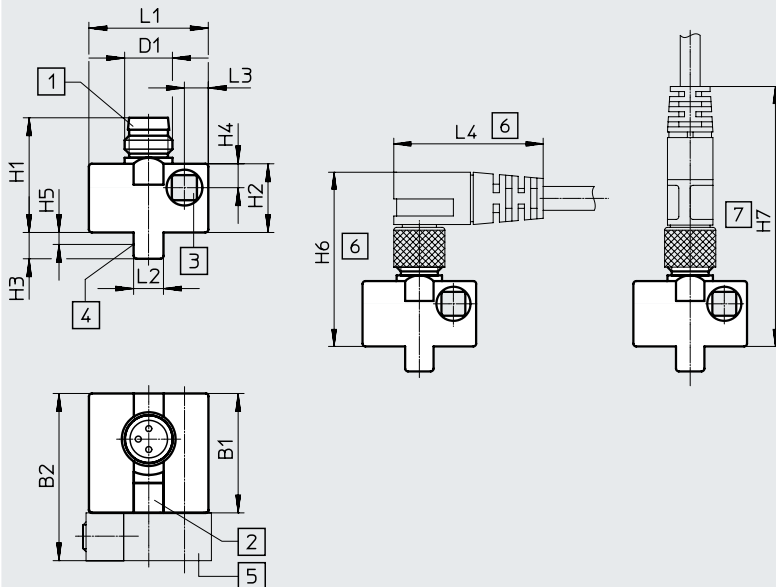


## Data sheet – Magnetic reed

## Dimensions

Download CAD data → [www.festo.com](http://www.festo.com)

SMEO-8E-S-LED-24 – Plug M8x1



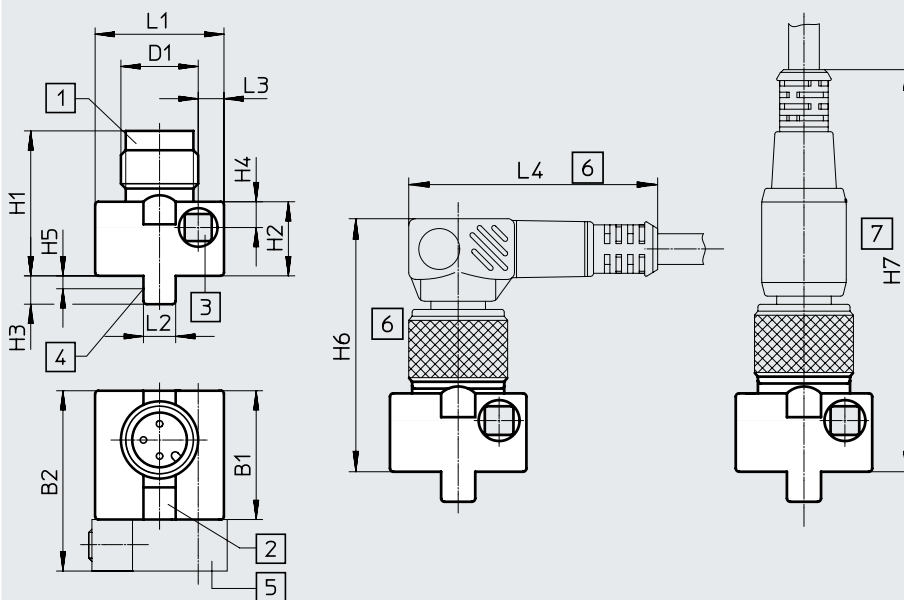
- [1] Suitable for plug socket type SIM-M8
- [2] Yellow light emitting diode
- [3] Socket head screw M3x25  
DIN 912, max. tightening torque  
1 Nm
- [4] Theoretical switching point
- [5] Mounting kit SMB-8E (not  
included in scope of delivery)
- [6] Installation space for angled plug  
socket 90°
- [7] Installation space for straight  
plug socket

|                      | B1<br>±0.3 | B2 | D1   | H1   | H2<br>±0.27 | H3  | H4 | H5  | H6  | H7  | L1<br>±0.3 | L2 | L3 | L4  |
|----------------------|------------|----|------|------|-------------|-----|----|-----|-----|-----|------------|----|----|-----|
| SMEO-8E-...-S-LED-24 | 20         | 28 | M8x1 | 19.2 | 11.5        | 4.4 | 4  | 2.2 | ~32 | ~46 | 20         | 5  | 4  | ~26 |

## Dimensions

Download CAD data → [www.festo.com](http://www.festo.com)

SMEO-8E-M12-LED-24 – Plug M12x1



- [1] Suitable for plug socket type SIM-M12
- [2] Yellow light emitting diode
- [3] Socket head screw M3x25  
DIN 912, max. tightening torque  
1 Nm
- [4] Theoretical switching point
- [5] Mounting kit SMB-8E (not  
included in scope of delivery)
- [6] Installation space for angled plug  
socket 90°
- [7] Installation space for straight  
plug socket

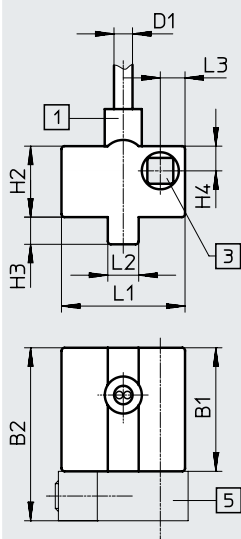
|                        | B1<br>±0.3 | B2 | D1    | H1<br>±0.34 | H2<br>±0.27 | H3  | H4 | H5  | H6  | H7  | L1<br>±0.3 | L2 | L3 | L4    |
|------------------------|------------|----|-------|-------------|-------------|-----|----|-----|-----|-----|------------|----|----|-------|
| SMEO-8E-...-M12-LED-24 | 20         | 28 | M12x1 | 22.5        | 11.5        | 4.4 | 4  | 2.2 | ~36 | ~59 | 20         | 5  | 4  | ~36.5 |

## Data sheet – Magnetic reed

## Dimensions

Download CAD data → [www.festo.com](http://www.festo.com)

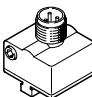
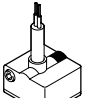
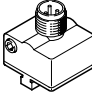
SMEO-8E-K24-S6 – Cable, heat-resistant up to 120°C



- [1] Cable, 2.5 m long, 2 x 0.14 mm<sup>2</sup>
- [3] Socket head screw M3x25  
DIN 912, max. tightening torque  
1 Nm
- [5] Mounting kit  
SMB-8E (not included in scope of  
delivery)

|                | B1<br>±0.3 | B2 | D1  | H2<br>±0.27 | H3  | H4 | L1<br>±0.3 | L2 | L3 |
|----------------|------------|----|-----|-------------|-----|----|------------|----|----|
| SMEO-8E-K24-S6 | 20         | 28 | 2.9 | 11.5        | 4.4 | 4  | 20         | 5  | 4  |

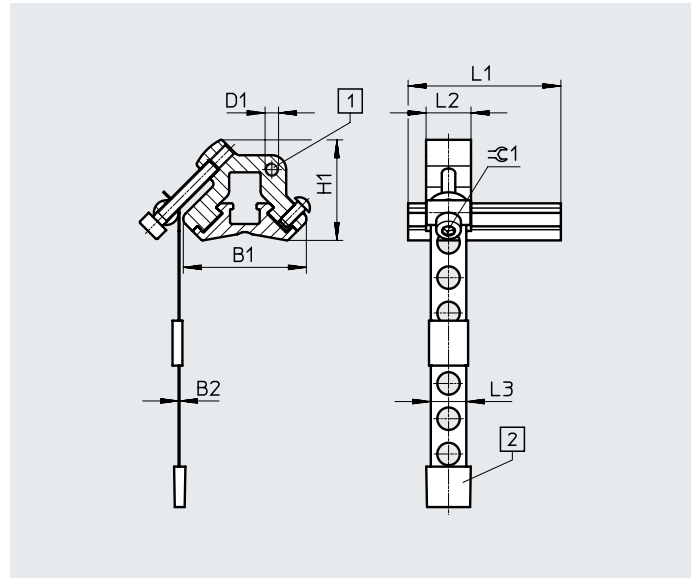
## Ordering data

| Ordering data  | Switching output    | Electrical connection |            | Cable length<br>[m] | Product weight<br>[g] | Part no. | Type                |
|--|---------------------|-----------------------|------------|---------------------|-----------------------|----------|---------------------|
|  |                     | Plug M8x1             | Plug M12x1 |                     |                       |          |                     |
| N/O contact, basic version   |                     |                       |            |                     |                       |          |                     |
|  | Contacting, bipolar | 3-pin                 | –          |                     | 10                    | 171163   | SMEO-8E-S-LED-24    |
|  |                     | –                     | 3-pin      |                     | 9                     | 171164   | SMEO-8E-M12-LED-24  |
| N/O contact, heat-resistant  |                     |                       |            |                     |                       |          |                     |
|  | Contacting, bipolar | 2-wire                | –          | 2.5                 | 40                    | 171158   | SMEO-8E-K-24-S6     |
| N/O contact, operating voltage range 3 ... 250 V AC/DC                             |                     |                       |            |                     |                       |          |                     |
|  | Contacting, bipolar | –                     | 3-pin      | –                   | 9                     | 171160   | SMEO-8E-M12-LED-230 |

## Accessories

### Mounting kit SMBR-8-8/100-S6

Material:  
 Rail: Anodised wrought aluminium alloy  
 Clamping strap, screws: High-alloy stainless steel  
 Free of copper and PTFE  
 RoHS-compliant



| Dimensions and ordering data |      |     |    |      |    |    |     |     |                   |  | Part no. | Type            |
|------------------------------|------|-----|----|------|----|----|-----|-----|-------------------|--|----------|-----------------|
| For piston Ø                 | B1   | B2  | D1 | H1   | L1 | L2 | L3  | ⌀1  | CRC <sup>1)</sup> |  |          |                 |
| 8 ... 100                    | 27.4 | 0.2 | M3 | 22.4 | 34 | 10 | 7.9 | 2.5 | 4                 |  | ★ 538937 | SMBR-8-8/100-S6 |

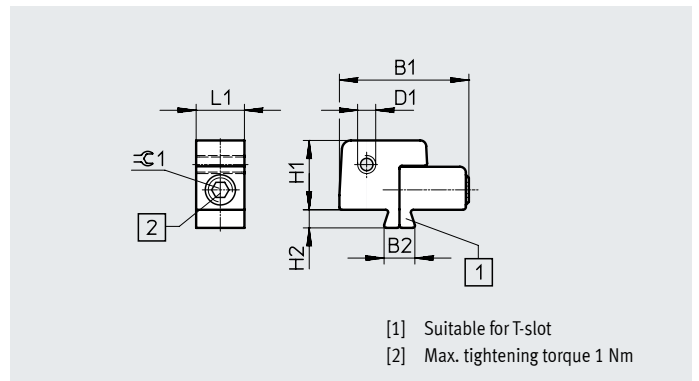
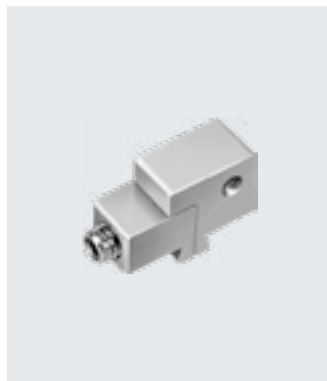
1) Corrosion resistance class CRC 4 to Festo standard FN 940070

Particularly high corrosion stress. Outdoor exposure under extreme corrosive conditions. Parts exposed to aggressive media, e.g. in the chemical or food industries. Such applications may need to be safeguarded by means of special testing (→ also FN 940082), using appropriate media.

### Mounting kit SMB-8E

Material:  
 Anodised aluminium, stainless steel

Note on materials: RoHS-compliant



| Ordering data |      |     |    |      |    |    |     |  |  |  | Part no. | Type   |
|---------------|------|-----|----|------|----|----|-----|--|--|--|----------|--------|
| For piston Ø  | B1   | B2  | D1 | H1   | H2 | L1 | ⌀1  |  |  |  |          |        |
| 10 ... 125    | 21.5 | 5.1 | M3 | 11.5 | 3  | 8  | 2.5 |  |  |  | 178230   | SMB-8E |

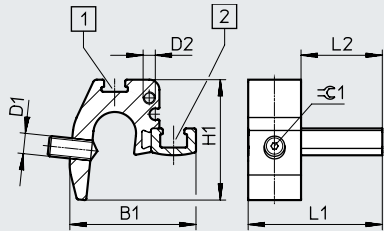
Accessories

Mounting SMBZ-8-...

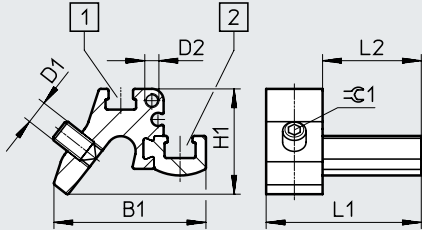
Material:  
Rail: Anodised wrought aluminium alloy  
Screws: High-alloy stainless steel  
Free of copper and PTFE  
RoHS-compliant



SMBZ-8-32/100



SMBZ-8-125/320



[1] Slot for inscription label  
[2] Slot for proximity switch

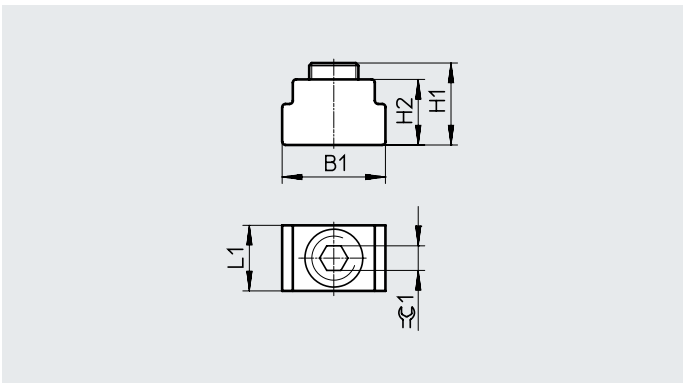
| Dimensions and ordering data |      |    |    |    |    |    |     |          |                |
|------------------------------|------|----|----|----|----|----|-----|----------|----------------|
| For piston ø                 | B1   | D1 | D2 | H1 | L1 | L2 | ≈G1 | Part no. | Type           |
| 32 ... 100                   | 31   | M5 | M3 | 30 | 33 | 20 | 1.5 | 537806   | SMBZ-8-32/100  |
| 125 ... 320                  | 32.3 |    |    | 22 |    |    | 2.5 | 537808   | SMBZ-8-125/320 |

Positioning element SMM

Inserted in the slot lengthwise

Ambient temperature: -40 ... +120°C

Materials:  
Housing: Anodised wrought aluminium alloy  
Screws: High-alloy stainless steel  
Note on materials: RoHS-compliant










| Dimensions and ordering data |     |     |     |     |                   |          |       |                  |
|------------------------------|-----|-----|-----|-----|-------------------|----------|-------|------------------|
| B1                           | H1  | H2  | L1  | ≈G1 | CRC <sup>1)</sup> | Part no. | Type  | PU <sup>2)</sup> |
| 6.3                          | 5.0 | 4.0 | 4.0 | 1.5 | 3                 | 547941   | SMM-8 | 10               |

1) Corrosion resistance class CRC 3 to Festo standard FN 940070  
High corrosion stress. Outdoor exposure under moderate corrosive conditions. Externally visible parts with primarily functional surface requirements which are in direct contact with a normal industrial environment.

2) Packaging unit


## Accessories

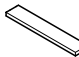
| Ordering data – Connecting cables   |   |                 | Data sheets → Internet: nebu/sim |          |                      |
|---|---|-----------------|----------------------------------|----------|----------------------|
|   |   | Number of wires | Cable length [m]                 | Part no. | Type                 |
| Socket M8x1, 3-pin  |   |                 |                                  |          |                      |
|  | For SMT/SME-8... and SMT0/SMTSO/SME0-8E | 3               | 2.5                              | ★ 541333 | NEBU-M8G3-K-2.5-LE3  |
|   |   |                 | 5                                | ★ 541334 | NEBU-M8G3-K-5-LE3    |
|  | For SMT/SME-8... and SMT0/SMTSO/SME0-8E | 3               | 2.5                              | ★ 541338 | NEBU-M8W3-K-2.5-LE3  |
|   |   |                 | 5                                | ★ 541341 | NEBU-M8W3-K-5-LE3    |
| Socket M12x1, 5-pin   |   |                 |                                  |          |                      |
|  | For SMT/SME-8M and SMT0/SMTSO/SME0-8E   | 3               | 2.5                              | ★ 541363 | NEBU-M12G5-K-2.5-LE3 |
|   |   |                 | 5                                | ★ 541364 | NEBU-M12G5-K-5-LE3   |
|  | For SMT/SME-8M and SMT0/SMTSO/SME0-8E   | 3               | 2.5                              | 541367   | NEBU-M12W5-K-2.5-LE3 |
|   |   |                 | 5                                | 541370   | NEBU-M12W5-K-5-LE3   |
| Socket M12x1, resistant to welding spatter  |   |                 |                                  |          |                      |
|  | For SDBT and SMTSO                      | 3               | 3                                | 30450    | SIM-M12-RS-3GD-3     |
|  | For SDBT and SMTSO                      | 3               | 3                                | 30451    | SIM-M12-RS-3WD-3     |

| Ordering data – Safety clip for ATEX zone   |      |   |          |             |                  |
|---|------|---|----------|-------------|------------------|
|   | Size | Description   | Part no. | Type        | PU <sup>1)</sup> |
|  | M8   | <ul style="list-style-type: none"> <li>Protects "equipment that is not intrinsically safe" in zones 2 and 22 against simple disconnection</li> <li>ATEX category: gas: II 3G / dust: II 3D</li> </ul> | 548067   | NEAU-M8-GD  | 1                |
|   | M12  |   | 548068   | NEAU-M12-GD | 1                |

1) Packaging unit

| Ordering data – Mounting components   |                                       |          |        |
|---|---------------------------------------|----------|--------|
|   | Description                           | Part no. | Type   |
|  | For fixing connecting cables in place | 534254   | SMBK-8 |

| Ordering data – Sensor tester   |   |          |           |
|---|---|----------|-----------|
|   | Description   | Part no. | Type      |
|  | <ul style="list-style-type: none"> <li>Testing the functionality of proximity switches using the integrated voltage supply</li> <li>Adjusting proximity switches on the cylinder</li> </ul> | 158481   | SM-TEST-1 |

| Ordering data – Inscription labels  |         |          |            |                  |
|---|---------|----------|------------|------------------|
|   | Size    | Part no. | Type       | PU <sup>1)</sup> |
|  | 23x4 mm | 541598   | ASLR-L-423 | 34               |

1) Packaging unit