

## Valve plugs for self-assembly

**FESTO**



Festo core product range  
Covers 80% of your automation tasks

Worldwide:  
Superb:  
Easy:

Always in stock  
Festo quality at an attractive price  
Simplified procurement and warehousing



Generally ready for shipping ex works in 24 hours  
In stock at 13 Service Centres worldwide  
More than 2200 products



Generally ready for shipping ex works in 5 days  
Assembled for you at 4 Service Centres worldwide  
Up to  $6 \times 10^{12}$  variants per product family

Just look  
for the  
star!

## Product range overview

Function	Design	Type	Number of pins/wires	→ Page/Internet
Plug	<b>Electrical connection 1, socket type A</b>			
	To EN 175301-803	MSSD-C	3-pin	4
		MSSD-N		
		MSSD-C	4-pin	6
	<b>Electrical connection 1, socket type B</b>			
	To EN 175301-803	MSSD-V	3-pin	8
	To industry standard, 11 mm	MSSD-F	3-pin	10
	<b>Electrical connection 1, socket type C</b>			
	To EN 175301-803	MSSD-EB	3-pin	12
			4-pin	14
	To industry standard, 9.4 mm	MSSD-E	3-pin	16
	<b>Electrical connection 1, socket plug pattern ZB/ZC</b>			
	–	MSSD-ZBZC	4-pin	18

## Type codes

001	Series	
MSSD	Plug socket	

002	Electrical connection 1, connection technology	
C	Type A to EN 175301-803	
F	Type B as per industry standard 11 mm	
E	Type C as per industry standard 9.4 mm	
EB	Type C to EN 175301-803	
N	Type A to EN 175301-803	
V	Type B to EN 175301-803	
ZBZC	Connection pattern ZB/ZC	

003	Electrical connection 1, number of pins/wires	
	Standard	
4P	4-pin	

004	Electrical connection 2, connection technology	
	Standard	
S	Insulation displacement connector	

005	Cable connector	
	Standard	
M12	M12	
M14	M14	
M16	M16	
TY	Pg11	

006	Operating voltage range	
	Standard	
24DC	0 ... 30 V DC, 0 ... 24 V AC	
24VDC	0 ... 30 V DC, 0 ... 24 V AC	

007	Version	
	Standard	
SD	Special design	

008	EU certification	
	None	
EX2	II 3GD	

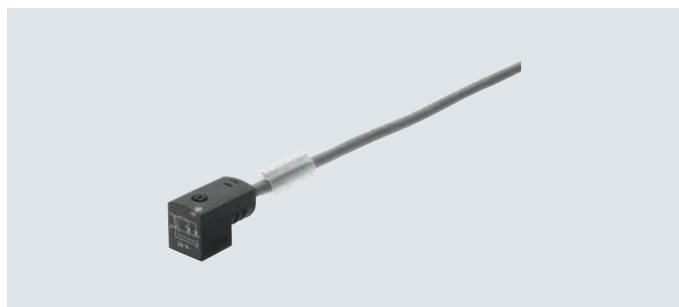
## Data sheet

### Plug socket

#### MSSD-C

#### MSSD-N

- For valves with D solenoid coil
- For valves with N1 solenoid coil
- For valves with H solenoid coil
- For valve series VZWM-L
- Cable connection with screw terminal



General technical data				
Type	MSSD-C	MSSD-C-M16	MSSD-N	MSSD-C-TY-24DC
Based on standard	–	–	EN 175301-803	–
Electrical connection 1				
Connection type	Socket	Socket	Socket	–
Cable outlet	Angled	Angled	Angled	–
Design	Rectangular	Rectangular	Rectangular	–
Connection technology	Plug pattern type A to DIN EN 175301-803	Plug pattern type A to DIN EN 175301-803	Plug pattern type A to EN 175301-803	–
Number of pins/wires	3	3	3	–
Type of mounting	On solenoid valve with M3 central screw	On solenoid valve with M3 central screw	On solenoid valve with M3 central screw	–
Contact durability	–	50	–	–
Electrical connection 2				
Connection technology	–	–	Screw terminal	–
Cable connector	Pg9	M16	M20x1.5	–
Cable diameter [mm]	6 ... 8	6 ... 8	8 ... 10	–
Nominal conductor cross section [mm <sup>2</sup> ]	1.5	1.5	1.5	–

Technical data – Electrical components				
Type	MSSD-C	MSSD-C-M16	MSSD-N	MSSD-C-TY-24DC
Operating voltage range	[V DC]	–	0 ... 24	–
	[V AC]	–	0 ... 250	–
Current load at 40°C	[A]	–	16	–

Materials				
Type	MSSD-C	MSSD-C-M16	MSSD-N	MSSD-C-TY-24DC
Housing	Polymer	Reinforced PA	Reinforced PA	–
Housing colour	Black	–	Black	–
Screws	–	–	Steel	–
Seals	–	HNBR	VMQ	–
Note on materials	RoHS-compliant	RoHS-compliant	RoHS-compliant	–
	–	–	Contains paint-wetting impairment substances	–

# Data sheet

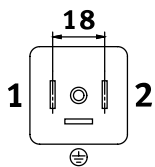
Operating and environmental conditions				
Type	MSSD-C	MSSD-C-M16	MSSD-N	MSSD-C-TY-24DC
Ambient temperature [°C]	-25 ... +90	-20 ... +115	-25 ... +80	-40 ... +90
CE marking (see declaration of conformity)	To EU Low Voltage Directive <sup>1)</sup>	–	–	–
Degree of protection	IP65	IP65	IP65	IP65
	–	To IEC 60529	–	To IEC 60529
Note on degree of protection	–	–	In assembled state	–
Maritime classification <sup>2)</sup>	See certificate	–	–	–

- 1) For information about the area of use, see the EC declaration of conformity at: [www.festo.com/sp](http://www.festo.com/sp) → Certificates.  
 If the devices are subject to usage restrictions in residential, commercial or light-industrial environments, further measures for the reduction of the emitted interference may be necessary.
- 2) Additional information is available at [www.festo.com/sp](http://www.festo.com/sp) → Certificates.

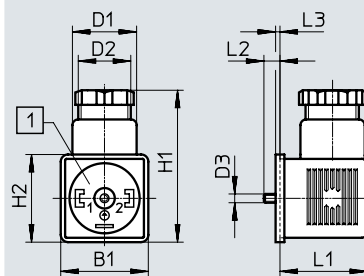
## Dimensions

 Download CAD data → [www.festo.com](http://www.festo.com)

### Pin allocation

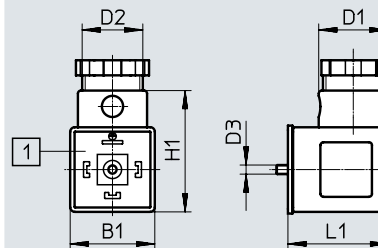


### MSSD-C



- [1] Insert can be repositioned by 90°

### MSSD-N



- [1] Plug pattern type A to EN 175301-803

Type	B1	D1 Ø	D2 Ø	D3 Ø	H1	H2	L1	L2	L3
MSSD-C	28	22	PG9	M3	52	28	26.5	5.5	1.5
MSSD-C-M16	27	22	M16x 1.5	M3	52	27	27	5.5	1.5
MSSD-C-TY-24DC	30	22	PG11	M3	52	30	30	5.5	1.5
MSSD-N	27.9	22.8	M20x1.5	M3	40	–	33.2	–	–

## Ordering data

Description	Signal status indication	Nominal conductor cross section [mm²]	Weight [g]	Part no.	Type
Socket, plug pattern type A to EN 175301-803, 3-pin, angled	–	6 ... 8	22	34583	MSSD-C
			38	539709	MSSD-C-M16
		8 ... 10	30	★ 550067	MSSD-N
	LED	≤ 1.5	–	177617	MSSD-C-TY-24DC

Festo core product range



Generally ready for shipping ex works in 24 hours  
 Generally ready for shipping ex works in 5 days

## Data sheet

### Plug socket MSSD-C

- For valves with D and N1 solenoid coils
- Cable connection using screw terminal or insulation displacement technology



### Special features of insulation displacement technology (MSSD-C-S-M16)

With these plug sockets, the cable is no longer connected using individual clamping screws.

Instead, the flying leads are pressed into the patented insulation displacement contact when the screw is tightened.

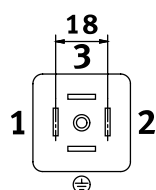
- Strip the cable sheath
- Push it in
- Screw it in tightly
- Finished

General technical data		
Type	MSSD-C-4P	MSSD-C-S-M16
Electrical connection 1		
Connection type	Socket	Socket
Cable outlet	Angled	Angled
Design	Rectangular	Rectangular
Connection technology	Plug pattern type A to DIN EN 175301-803	Plug pattern type A to DIN EN 175301-803
Number of pins/wires	3	4
Type of mounting	On solenoid valve with M3 central screw	On solenoid valve with M3 central screw
Contact durability	–	10
Electrical connection 2		
Connection technology	Screw terminal	Insulation displacement connector
Cable connector	Pg9	–
Cable diameter [mm]	6 ... 8	5.5 ... 8
Nominal conductor cross section [mm <sup>2</sup> ]	≤ 1.5	0.5 ... 1
Materials		
Type	MSSD-C-4P	MSSD-C-S-M16
Housing	Polymer	PA
Housing colour	Black	Black
Note on materials	RoHS-compliant	RoHS-compliant
Operating and environmental conditions		
Type	MSSD-C-4P	MSSD-C-S-M16
Ambient temperature [°C]	–25 ... +90	–20 ... +90
Degree of protection	IP65	IP67
	–	To IEC 60529

## Data sheet

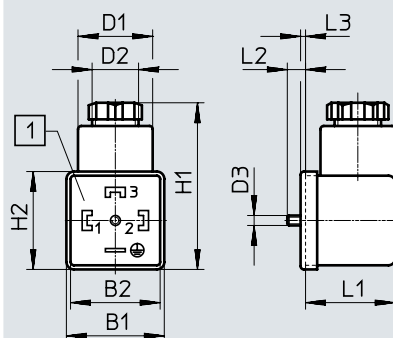
### Dimensions

#### Pin allocation



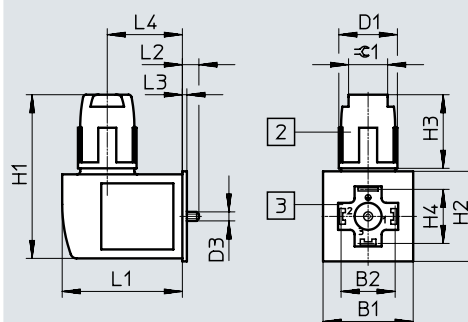
Download CAD data → [www.festo.com](http://www.festo.com)

#### MSSD-C-4P



[1] Insert can be repositioned by 90°

#### MSSD-CS-M16



[2] Union nut M16x1

[3] Connection side can be repositioned by 90°

Type	B1	B2	D1 Ø	D2 Ø	D3 Ø	H1	H2	H3	H4	L1	L2	L3	L4	⌀1
MSSD-C-4P	29.5	27	23.8	Pg9	M3	49	29.5	42	–	27	5.5	1.5	–	–
MSSD-CS-M16	30	18	19.5	–	M3	54.5	30	24.5	18	40	5.5	1.5	25	13

### Ordering data

Description	Cable connection	Weight [g]	Part no.	Type
Socket, plug pattern type A to DIN EN 175301-803, 4-pin, angled	Screw terminal	22	171157	MSSD-C-4P
	Insulation displacement connector	38	192748	MSSD-CS-M16

## Data sheet

### Plug socket MSSD-V

- For valve with V solenoid coil
- Cable connection with screw terminal



General technical data		
Type	MSSD-V-M16	MSSD-V
Electrical connection 1		
Connection type	Socket	Socket
Cable outlet	Angled	Angled
Design	Rectangular	Rectangular
Connection technology	Plug pattern type B to DIN EN 175301-803	Plug pattern type B to DIN EN 175301-803
Number of pins/wires	3	3
Type of mounting	On solenoid valve with M3 central screw	On solenoid valve with M3 central screw
Contact durability	50	–
Electrical connection 2		
Connection technology	Screw terminal	Screw terminal
Cable connector	M16x1.5	Pg9
Cable diameter [mm]	6 ... 8	6 ... 8
Nominal conductor cross section [mm <sup>2</sup> ]	0.75	Max. 1.5
Materials		
Type	MSSD-V-M16	MSSD-V
Housing	Reinforced PA	Polymer
Housing colour	–	Black
Seals	HNBR	–
Operating and environmental conditions		
Type	MSSD-V-M16	MSSD-V
Ambient temperature [°C]	–20 ... +115	–25 ... +90
CE marking (see declaration of conformity) <sup>1)</sup>	–	To EU Low Voltage Directive
Degree of protection	IP65	IP65
	To IEC 60529	–

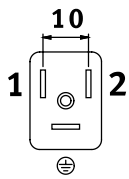
1) Additional information is available at [www.festo.com/sp](http://www.festo.com/sp) → Certificates.



# Data sheet

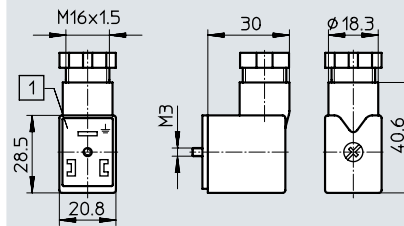
## Dimensions

### Pin allocation



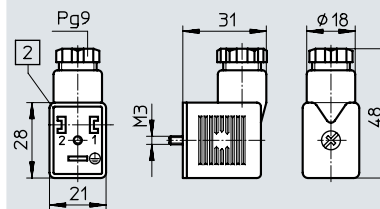
Download CAD data → [www.festo.com](http://www.festo.com)

### MSSD-V-M16



[1] Insert can be repositioned by 180°

### MSSD-V



[1] Insert can be repositioned by 180°

## Ordering data

Description	Cable connection	Nominal conductor cross section [mm <sup>2</sup> ]	Weight [g]	Part no.	Type
Socket, plug pattern type B to DIN EN 175301-803, 3-pin, angled	Screw terminal	Max. 0.75	35 g	539713	MSSD-V-M16
		Max. 1.5	18 g	33295	MSSD-V

## Data sheet

### Plug socket MSSD-F

- For valves with F solenoid coils
- Cable connection using screw terminal or insulation displacement technology



General technical data				
Type		MSSD-F-M16	MSSD-F	MSSD-F-S-M16
Electrical connection 1				
Connection type		Socket	Socket	Socket
Cable outlet		Angled	Angled	Angled
Design		Rectangular	Rectangular	Rectangular
Connection technology		Plug pattern type B to industry standard 11 mm	Plug pattern type B to industry standard 11 mm	Plug pattern type B to industry standard 11 mm
Number of pins/wires		3	3	3
Type of mounting		On solenoid valve with M3 central screw	On solenoid valve with M3 central screw	On solenoid valve with M3 central screw
Note on cable outlet		Can be repositioned by 180°	–	–
Contact durability		50	–	10
Protective earth connection		Present	–	–
Electrical connection 2				
Connection technology		Screw terminal	Screw terminal	Insulation displacement connector
Cable connector		M16x1.5	Pg9	M16x1.5
Cable diameter [mm]		6 ... 8	6 ... 8	5.5 ... 8
Nominal conductor cross section [mm²]		Max. 0.75	Max. 1.5	0.5 ... 1
Technical data – Electrical components				
Type		MSSD-F-M16	MSSD-F	MSSD-F-S-M16
Operating voltage range	[V DC]	0 ... 250	–	–
	[V AC]	0 ... 250	–	–
Surge resistance	[kV]	2	–	–
Current load at 40°C	[A]	6	–	–
Materials				
Type		MSSD-F-M16	MSSD-F	MSSD-F-S-M16
Housing		Reinforced PA	Polymer	PA
Housing colour		Black	Black	Black
Seals		HNBR	–	–
Note on materials		RoHS-compliant	–	–

## Data sheet

Operating and environmental conditions			
Type	MSSD-F-M16	MSSD-F	MSSD-F-S-M16
Ambient temperature [°C]	-20 ... +115	-25 ... +90	-25 ... +90
Corrosion resistance class CRC <sup>1)</sup>	1	-	-
Pollution degree	3	-	-
CE marking (see declaration of conformity) <sup>2)</sup>	-	To EU Low Voltage Directive	-
Degree of protection	IP65	IP65	IP67
Note on degree of protection	In assembled state	In assembled state	In assembled state

1) Corrosion resistance class CRC 1 to Festo standard FN 940070

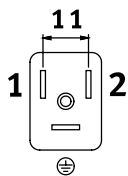
Low corrosion stress. Dry indoor application or transport and storage protection. Also applies to parts behind coverings, in the non-visible interior area, and parts which are covered in the application (e.g. drive trunnions).

2) Additional information is available at [www.festo.com/sp](http://www.festo.com/sp) → Certificates.

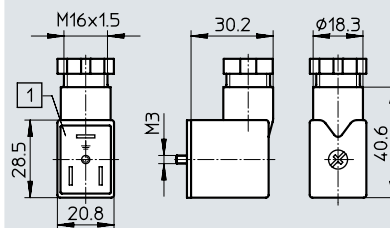
### Dimensions

Download CAD data → [www.festo.com](http://www.festo.com)

#### Pin allocation

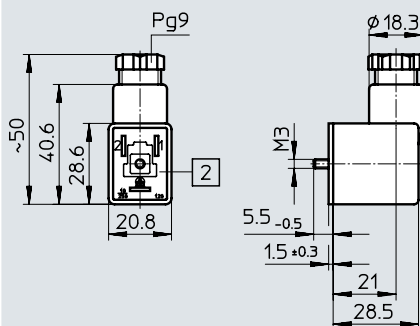


#### MSSD-F-M16



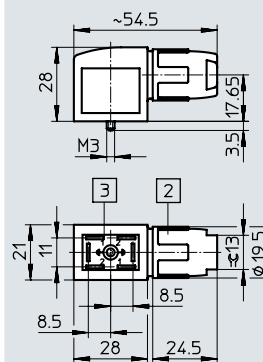
[1] Insert can be repositioned by 180°

#### MSSD-F



[2] Insert can be repositioned by 180°

#### MSSD-F-S-M16



[2] Union nut M16x1

[3] Connection side can be repositioned by 90°

With these plug sockets, instead of the cable being connected using individual clamping screws, the flying leads are pressed into the patented insulation displacement contact when the screw is tightened:

- Strip the cable sheath
- Push it in
- Screw it in tightly
- Finished

### Ordering data

Description	Cable connection	Nominal conductor cross section [mm <sup>2</sup> ]	Weight [g]	Part no.	Type
Socket, plug pattern type B, to industry standard, 11 mm, 3-pin, angled	Screw terminal	Max. 0.75	35	539710	MSSD-F-M16
		Max. 1.5	17	★ 34431	MSSD-F
	Insulation displacement connector	0.5 ... 1	35	192746	MSSD-F-S-M16

Festo core product range



Generally ready for shipping ex works in 24 hours

Generally ready for shipping ex works in 5 days

## Data sheet

### Plug socket MSSD-EB

- For valves with EB and N2 solenoid coils



General technical data			
Type	MSSD-EB-M12-24VDC-SD-EX	MSSD-EB	MSSD-EB-M12
<b>Electrical connection 1</b>			
Connection type	Socket	Socket	Socket
Cable outlet	Angled	Angled	Angled
Design	Rectangular	Rectangular	Rectangular
Connection technology	Plug pattern type C, to DIN EN 175301-803	Plug pattern type C, to DIN EN 175301-803	Plug pattern type C, to DIN EN 175301-803
Number of pins/wires	3	3	3
Type of mounting	On solenoid valve with M2.5 central screw	On solenoid valve with M2.5 central screw	On solenoid valve with M2.5 central screw
Note on cable outlet	Can be repositioned by 180°	–	–
Contact durability	–	–	50
<b>Electrical connection 2</b>			
Connection technology	Screw terminal	Screw terminal	Insulation displacement connector
Cable connector	M12	Pg7	M12
Cable diameter [mm]	4 ... 6	6 ... 8	4 ... 6
Nominal conductor cross section [mm <sup>2</sup> ]	0.25 ... 0.5	≤ 0.75	1.5

Technical data – Electrical components			
Type	MSSD-EB-M12-24VDC-SD-EX	MSSD-EB	MSSD-EB-M12
Nominal operating voltage	[V DC]	–	300
	[V AC]	–	250
Operating voltage range	[V DC]	0 ... 30	–
	[V AC]	0 ... 24	–
Surge resistance	[kV]	0.8	4
Current load at 40°C	[A]	6	6

Materials			
Type	MSSD-EB-M12-24VDC-SD-EX	MSSD-EB	MSSD-EB-M12
Housing	Reinforced PA	Polymer	Reinforced PA
Housing colour	–	Black	–
Seals	HNBR	NBR	HNBR
Note on materials	RoHS-compliant	–	–

# Data sheet

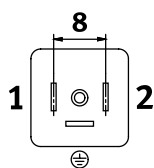
Operating and environmental conditions			
Type	MSSD-EB-M12-24VDC-SD-EX	MSSD-EB	MSSD-EB-M12
Ambient temperature [°C]	-25 ... +125	-45 ... +90	-40 ... +125
Pollution degree	3	3	-
CE marking (see declaration of conformity) <sup>1)</sup>	-	To EU Low Voltage Directive	-
Degree of protection	IP65 To IEC 60529	IP65 To IEC 60529	IP65 To IEC 60529

1) Additional information is available at [www.festo.com/sp](http://www.festo.com/sp) → Certificates.

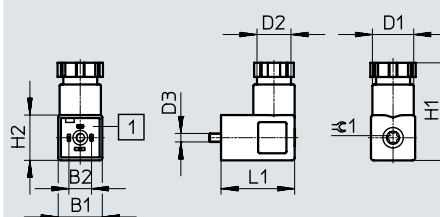
## Dimensions

Download CAD data → [www.festo.com](http://www.festo.com)

### Pin allocation

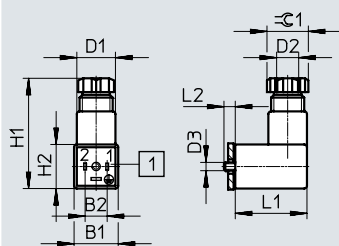


### MSSD-EB-M12-24VDC-SD-EX



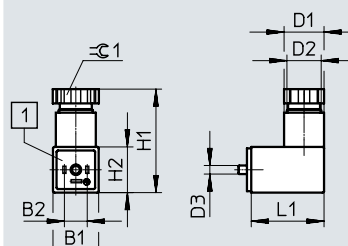
[1] Insert can be repositioned by 90°

### MSSD-EB



[1] Insert can be repositioned by 90°

### MSSD-EB-M12



[1] Insert can be repositioned by 90°

Type	B1	B2	D1 Ø	D2 Ø	D3 Ø	H1	H2	L1	L2	≈ 1
MSSD-EB-M12-24VDC-SD-EX	15.6	8	14.6	M12x 1.5	2.5	34.5	16	26	-	T8
MSSD-EB	15.5	8	15	Pg7	2.5	40	15.5	26	4.1	13
MSSD-EB-M12	15.5	8	15	M12x 1.5	M2.5	33	15.5	25.5	-	13

## Ordering data

Description	Cable connection	Nominal conductor cross section [mm²]	Weight [g]	Part no.	Type
Socket, plug pattern type C to DIN EN 175301-803, 3-pin, angled	Screw terminal	0.25 ... 0.5	-	570367	MSSD-EB-M12-24VDC-SD-EX
		≤ 0.75	11 g	★ 151687	MSSD-EB
		1.5	11 g	539712	MSSD-EB-M12

Festo core product range



Generally ready for shipping ex works in 24 hours  
Generally ready for shipping ex works in 5 days

Data sheet

Plug socket MSSD-EB

- For valves with EB and N2 solenoid coils

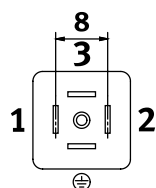


General technical data		
Electrical connection 1		
Connection type	Socket	
Cable outlet	Angled	
Design	Rectangular	
Connection technology	Plug pattern type C	
Number of pins/wires	4	
Type of mounting	On solenoid valve with M2.5 central screw	
Contact durability	10	
Electrical connection 2		
Connection technology	Insulation displacement connector	
Cable diameter	[mm]	4 ... 6
Materials		
Housing	Reinforced PA	
Housing colour	Black	
Operating and environmental conditions		
Ambient temperature	[°C]	−25 ... +90
Degree of protection	IP67	
	To IEC 60529	

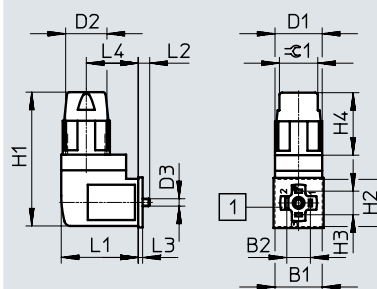
## Data sheet

## Dimensions

## Pin allocation


 Download CAD data → [www.festo.com](http://www.festo.com)

## MSSD-EB-S-M14



[1] Insert can be repositioned by 90°

With these plug sockets, instead of the cable being connected using individual clamping screws, the flying leads are pressed into the patented insulation displacement contact when the screw is tightened.

- Strip the cable sheath
- Push it in
- Screw it in tightly
- Finished

Type	B1	B2	D1 Ø	D2	D3 Ø	H1	H2	H3	H4	L1	L2	L3	L4	≈1
MSSD-EB-S-M14	16	8	16	M14x1	2.5	45	16	8	21.2	26	4	1.5	17.6	13

## Ordering data

Description	Cable connection	Nominal conductor cross section [mm <sup>2</sup> ]	Weight [g]	Part no.	Type
Socket, plug pattern type C to DIN EN 175301-803, 4-pin, angled	Insulation displacement connector	0.25 ... 0.5	17	<b>192745</b>	<b>MSSD-EB-S-M14</b>

Plug, socket type C, industry standard, 9.4 mm

## Data sheet

### Plug socket MSSD-E

- For valves with E solenoid coils



General technical data		
Type	MSSD-E	MSSD-E-M12
Electrical connection 1		
Connection type	Socket	Socket
Cable outlet	Angled	Angled
Design	Rectangular	Rectangular
Connection technology	Plug pattern type C to industry standard, 9.4 mm	Plug pattern type C to industry standard, 9.4 mm
Number of pins/wires	3	3
Type of mounting	On solenoid valve with M3 central screw	On solenoid valve with M3 central screw
Contact durability	–	50
Electrical connection 2		
Connection technology	Screw terminal	Screw terminal
Cable connector	Pg7	M12
Cable diameter [mm]	6 ... 8	4 ... 6
Nominal conductor cross section [mm <sup>2</sup> ]	0.75	0.75

Technical data – Electrical components		
Operating voltage range	[V DC]	0 ... 300
	[V AC]	0 ... 250
Current load at 40°C	[A]	6

Materials		
Type	MSSD-E	MSSD-E-M12
Housing	Reinforced PA	Reinforced PA
Housing colour	Black	Black
Seals	NBR	HNBR
Note on materials	–	RoHS-compliant

Operating and environmental conditions		
Type	MSSD-E	MSSD-E-M12
Ambient temperature [°C]	–25 ... +90	–20 ... +115
Corrosion resistance class CRC <sup>1)</sup>	–	1
Pollution degree	3	3
Degree of protection	IP65	IP65
Note on degree of protection	In assembled state	In assembled state

1) Corrosion resistance class CRC 1 to Festo standard FN 940070

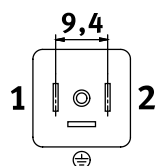
Low corrosion stress. Dry indoor application or transport and storage protection. Also applies to parts behind coverings, in the non-visible interior area, and parts which are covered in the application (e.g. drive trunnions).



## Data sheet

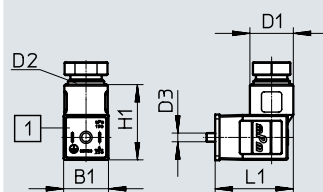
### Dimensions

#### Pin allocation



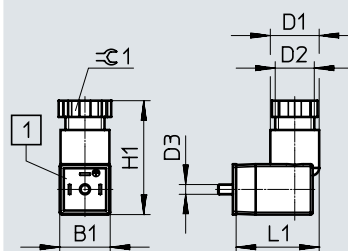
Download CAD data → [www.festo.com](http://www.festo.com)

#### MSSD-E



[1] Insert can be repositioned by 90°

#### MSSD-E-M12



[1] Insert can be repositioned by 90°

Type	B1	D1 Ø	D2	D3	H1	L1	1/2 1
MSSD-E	15.5	14	Pg7	M3	24.5	25	–
MSSD-E-M12	15.5	15	M12x 1.5	M3	33	25.5	13

### Ordering data

Description	Cable connection	Cable diameter [mm]	Weight [g]	Part no.	Type
Socket, plug pattern type C, to industry standard, 9.4 mm, 3-pin, angled	Screw terminal	6 ... 8	8	14098	MSSD-E
		4 ... 6	11	539711	MSSD-E-M12

## Data sheet

### Plug socket MSSD-ZBZC

- For valves with ZB and ZC solenoid coils



#### General technical data

##### Electrical connection 1

Connection type	Socket
Cable outlet	Angled
Design	Rectangular
Connection technology	Plug pattern ZB/ZC
Number of pins/wires	4
Type of mounting	On solenoid valve via self-tapping screw

##### Electrical connection 2

Connection technology	Insulation displacement connector
Nominal conductor cross section [mm <sup>2</sup> ]	0.22 ... 0.34

#### Technical data – Electrical components

Nominal operating voltage [V DC]	24
Operating voltage range [V DC]	3 ... 36

#### Materials

Housing	PA
Note on materials	RoHS-compliant

#### Operating and environmental conditions

Ambient temperature [°C]	−10 ... +50
Corrosion resistance class CRC <sup>1)</sup>	1
Degree of protection	IP50
Note on degree of protection	In assembled state
Maritime classification <sup>2)</sup>	See certificate

1) Corrosion resistance class CRC 1 to Festo standard FN 940070

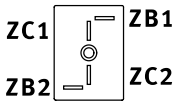
Low corrosion stress. Dry indoor application or transport and storage protection. Also applies to parts behind coverings, in the non-visible interior area, and parts which are covered in the application (e.g. drive trunnions).

2) Additional information is available at [www.festo.com/sp](http://www.festo.com/sp) → Certificates.

Data sheet

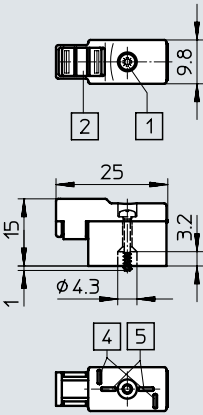
Dimensions

Pin allocation



Download CAD data → [www.festo.com](http://www.festo.com)

MSSD-ZBZC



- [1] Retaining screw
- [2] Inscription label IBS-6x10
- [4] Plug pattern for ZB solenoid coil
- [5] Plug pattern for ZC solenoid coil

Ordering data

Description	Cable connection	Nominal conductor cross section [mm <sup>2</sup> ]	Weight [g]	Part no.	Type
Socket, connection pattern ZB/ZC, 4-pin, angled	Insulation displacement connector	0.22 ... 0.34	11	185521	MSSD-ZBZC

Festo - Your Partner in Automation



**1 Festo Inc.**  
5300 Explorer Drive  
Mississauga, ON L4W 5G4  
Canada

**Festo Customer Interaction Center**  
Tel: 1 877 463 3786  
Fax: 1 877 393 3786  
Email: customer.service.ca@festo.com



**2 Festo Pneumatic**  
Av. Ceylán 3,  
Col. Tequesquináhuac  
54020 Tlalnepantla,  
Estado de México

**Multinational Contact Center**  
01 800 337 8669  
ventas.mexico@festo.com



**3 Festo Corporation**  
1377 Motor Parkway  
Suite 310  
Islandia, NY 11749

**Festo Customer Interaction Center**  
1 800 993 3786  
1 800 963 3786  
customer.service.us@festo.com



**4 Regional Service Center**  
7777 Columbia Road  
Mason, OH 45040

Connect with us

[www.festo.com/socialmedia](http://www.festo.com/socialmedia)



[www.festo.com](http://www.festo.com)

Subject to change