

## Toothed belt axis units ELGE

**FESTO**



This product is also available as a modular mechanical system  
Toothed belt axis ELGR-TB

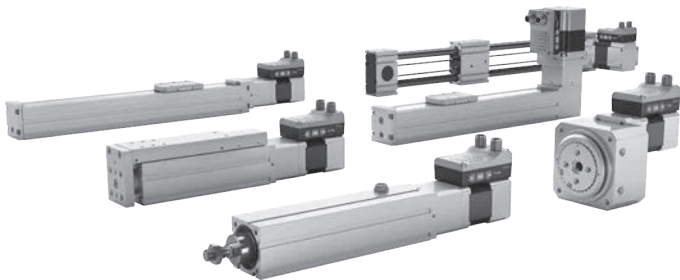




## Key features

### At a glance

#### Plug and work with the Simplified Motion Series



The simplicity of pneumatics is now combined for the first time with the advantages of electric automation thanks to the Simplified Motion Series. These integrated drives are the perfect solution for all users who are looking for an electric alternative for very simple movement and positioning tasks between two mechanical end positions, but don't want the commissioning process for traditional electric drive systems that can often be quite complex.

## IO-Link

There is no need for any software since operation is simply based on the "plug and work" principle. Digital I/O (DIO) and IO-Link are always automatically included – a product with two types of control as standard.

### Integrated

The integrated electronics in the drive are at the core of the Simplified Motion Series.

### Single

For commissioning, simply set all relevant parameters directly on the drive:

- Speed and force
- Reference end position and cushioning
- Manual operation

### Standardised

Electrical connection via M12 plug design

- Power (4-pin): power supply for the motor
- Logic (8-pin): control signal, sensor signal and power for the integrated electronics

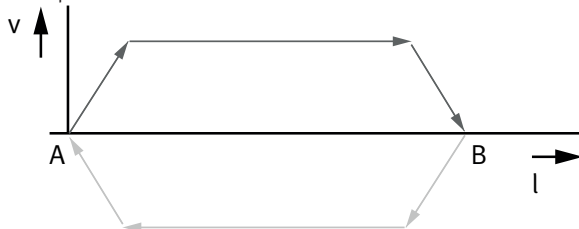
### Connected

Use of extended functions possible via IO-Link:

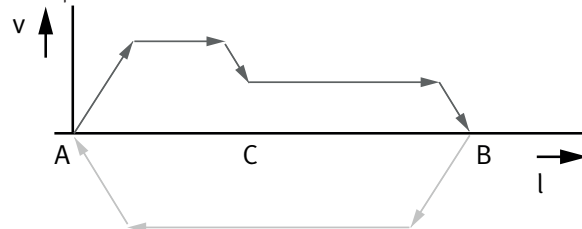
- Motion parameters can be set remotely
- Copy and backup function for transferring parameters
- Read function for extended process parameters

### The functions of the Simplified Motion Series

Basic profile for movement between two end positions: with speed control



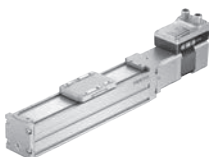
Extended motion profile for simplified press-fitting and clamping functions: with speed and force control



- These drives are designed for simple movements between two end positions.
- Proximity switches are required in order to implement any intermediate positions.

### The products in the Simplified Motion Series

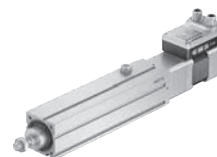
Spindle axis unit  
ELGS-BS-KF



Mini slide unit  
EGSS-BS-KF



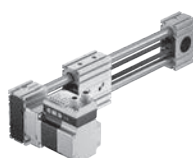
Electric cylinder unit  
EPCS



Toothed belt axis unit  
ELGS-TB-KF



Toothed belt axis unit  
ELGE



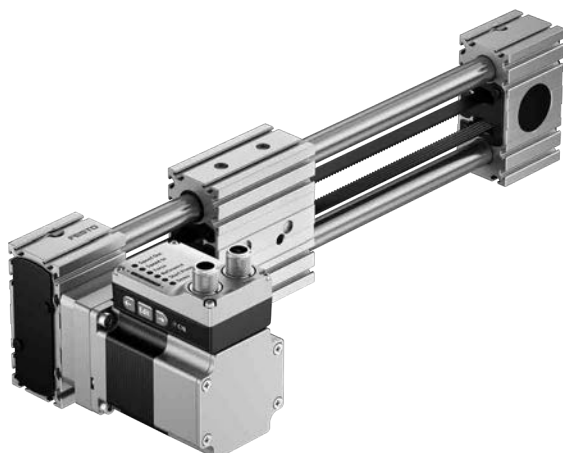
Rotary drive unit  
ERMS





## Key features

## At a glance



- Without external servo drive: all the necessary electronic components are combined in the integrated drive
- Two control options integrated as standard: digital I/O and IO-Link
- Complete solution for simple movements between two mechanical end positions
- Protected against external influences by internal guide
- Simplified commissioning: all parameters can be manually set directly on the drive
- No special expertise required for commissioning
- End position feedback similar to that of a conventional proximity switch is integrated as standard
- Free choice of flexible motor mounting on four sides
- Cost-optimised design for tasks that require simpler yet highly cost-efficient solutions with a service life of 5,000 km

## Modular and flexible with motor, motor mounting kit and servo drive

This product is also available within the Optimised Motion Series as toothed belt axis ELGR-TB:

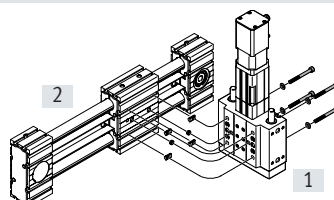
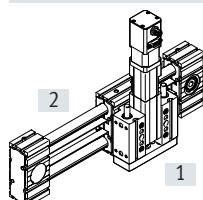


Toothed belt axes for tasks that require simpler yet highly cost-efficient solutions in cost-optimised design with a long service life. Ideal for pick & place tasks and for transporting small loads of less than 15 kg.

- 1 driven slide, optionally additional, freely movable slides
- Extended guide, additional mounting options
- Free choice of flexible motor mounting on 4 sides
- Guide variants: recirculating ball bearing guide for moderate loads or plain-bearing guide for low loads
- Modular: individual combinations with motor, motor mounting kit and servo drive

## Possible combinations with Festo drives

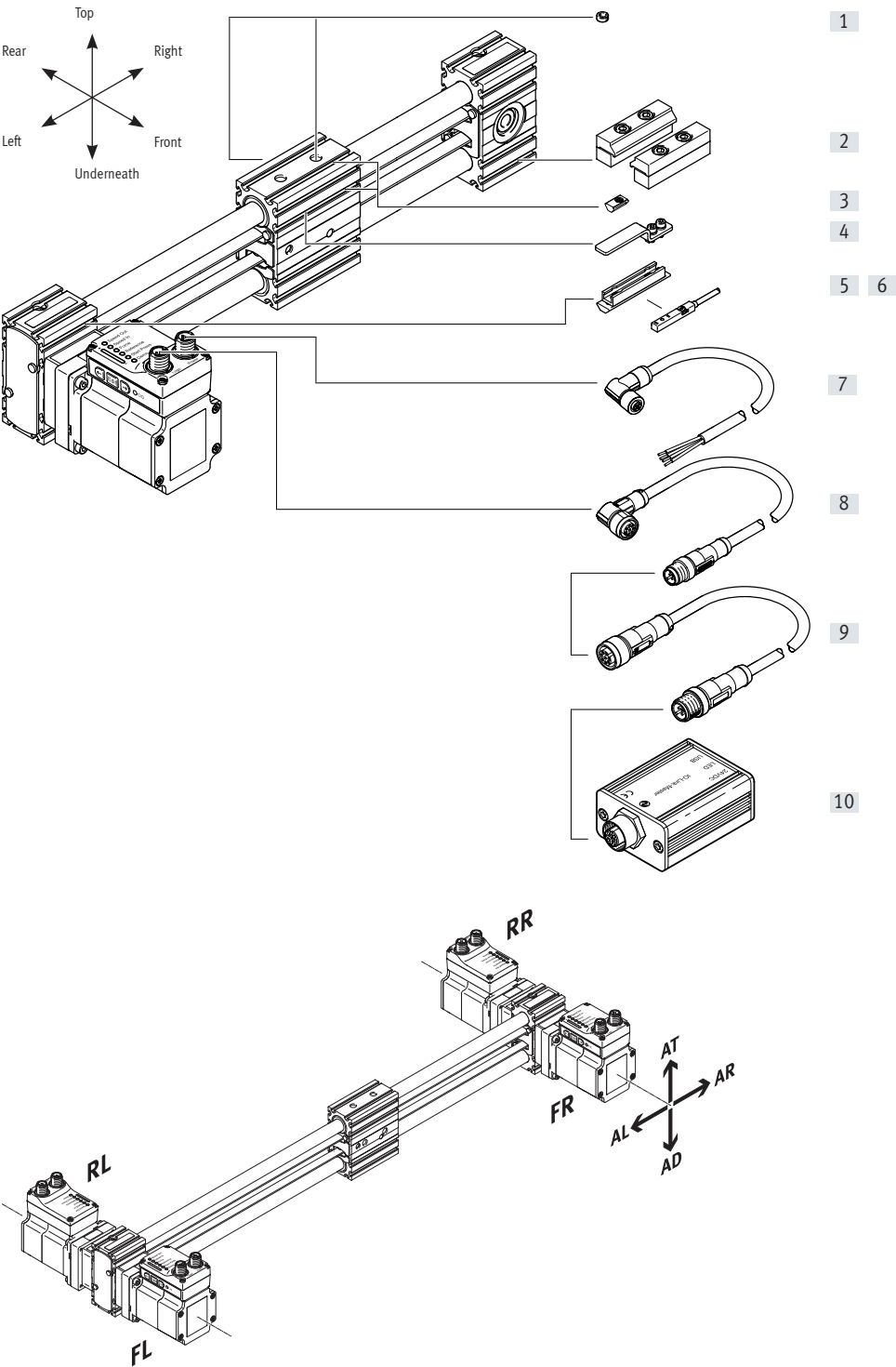
Electric cylinder EPCO on toothed belt axis unit ELGE



Size		Accessories			
[1] EPCO	[2] ELGE	Slot nut	Centring sleeve	Screw	Washer
16	35	NST-3-M3 (x4)	ZBH-7 (x2)	M3x10 (x4)	–



Peripherals overview





## Peripherals overview

Accessories			
	Type/order code	Description	→ Page/Internet
[1]	Centring sleeve ZBH	<ul style="list-style-type: none"> <li>For centring loads and attachments on the slide</li> <li>2 centring sleeves included in the scope of delivery of the axis</li> </ul>	21
[2]	Profile mounting MUE	For mounting the axis on the bearing cap	20
[3]	Slot nut NST	For mounting attachments	21
[4]	Switch lug <sup>1)</sup> EAPM-L4-SLS	For sensing the slide position	20
[5]	Sensor bracket <sup>1)</sup> EAPM-L4-SHS	Adapter for mounting the inductive proximity switches on the axis	20
[6]	Proximity switch, T-slot <sup>1)</sup> SIES-8M	<ul style="list-style-type: none"> <li>Inductive proximity switch, for T-slot</li> <li>1 switch lug and 1 sensor bracket are included in the scope of delivery with the order code SA, SB</li> </ul>	21
[7]	Supply cable NEBL-T12	For connecting load and logic supply	22
[8]	Connecting cable NEBC-M12	For connection to a controller	22
[9]	Adapter NEFC-M12G8	Connection between the motor and the IO-Link master	22
[10]	IO-Link master USB CDSU-1	For straightforward use of the mini slide unit via IO-Link	22

1) Proximity switches are optional and only required in order to sense any intermediate positions.

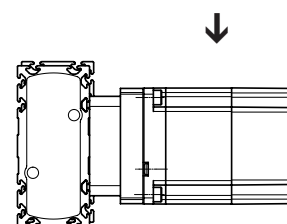
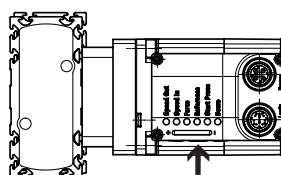
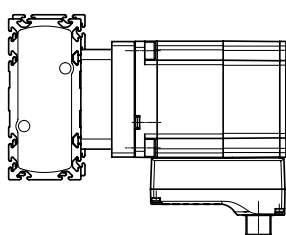
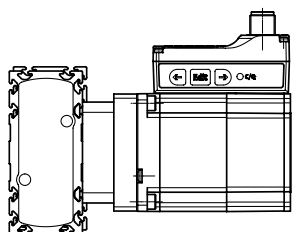
### Motor attachment variants

[AT] Top

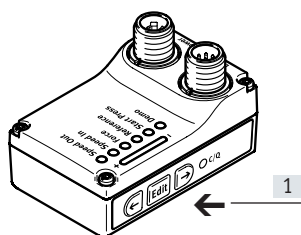
[AD] Underneath

[AL] Left

[AR] Right



### Control elements



[1] Pushbutton actuators for parameterisation and control



## Type codes

001	Series	
ELGE	Gantry axis	

002	Drive system	
TB	Toothed belt	

003	Guide	
	Recirculating ball bearing guide	

004	Size	
35	35	

005	Stroke	
50	50	
100	100	
150	150	
200	200	
250	250	
300	300	
350	350	
400	400	
450	450	
500	500	
550	550	
600	600	
650	650	
700	700	
750	750	
800	800	

006	Stroke reserve	
OH	0 mm	

007	Motor type	
ST	Stepper motor ST	

008	Controller	
M	Integrated	

009	Control panel	
H1	Integrated	

010	Bus protocol/activation	
PLK	PNP and IO-Link®	
NLK	NPN and IO-Link®	

011	End-position sensing	
AA	With integrated end-position sensing	

012	Cable outlet direction	
AT	Top	
AD	Underneath	
AL	Left	
AR	Right	

013	Motor position	
FR	Front right	
FL	Front left	
RR	Rear right	
RL	Rear left	

014	Profile mounting	
...MA	1 ... 2	

015	Proximity sensor, inductive, slot 8, N/O contact, cable 7.5 m	
...SA	0 ... 6	

016	Proximity sensor, inductive, slot 8, N/C contact, cable 7.5 m	
...SB	1 ... 6	

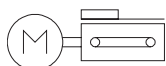
017	Slot nut for mounting slot	
...NM	1 ... 99	

018	Electrical accessories	
	None	
L1	Adapter for operation as IO-Link® device	

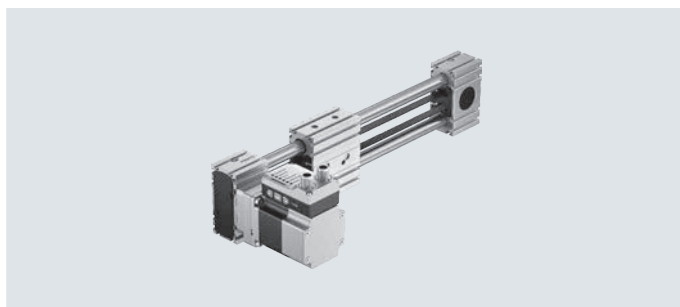
019	Operating instructions	
	With operating instructions	
DN	No operating instructions	



## Data sheet



- Ø - Size  
35
- I - Stroke length  
50 ... 800 mm



General technical data		
Size		35
Design		Electromechanical axis with toothed belt and integrated drive
Motor type		Stepper motor
Guide		Recirculating ball bearing guide
Mounting position		Horizontal
Working stroke	[mm]	50 ... 800
Stroke reserve	[mm]	0
Additional functions		Integrated end-position sensing
		User interface
Display		LED
Homing		Positive fixed stop block
		Negative fixed stop block
Type of mounting		With female thread
		With accessories
		With centring pin, centring sleeve
Max. line length		
Inputs/outputs	[m]	15
IO-Link operation	[m]	20

Mechanical data		
Size		35
Max. payload	[kg]	2.8
Max. feed force $F_x$	[N]	50
Speed <sup>1)</sup>	[m/s]	1.2
Max. acceleration	[m/s <sup>2</sup> ]	8.5
Repetition accuracy	[mm]	±0.1
Position sensing		For proximity switch
		Via IO-Link

1) It is not possible to reach the maximum speed of 1.2 m/s with strokes < 250 mm.



## Data sheet

<b>Toothed belt</b>		
Size		35
Pitch	[mm]	2
Elongation <sup>1)</sup>	[%]	0.094
Effective diameter	[mm]	18.46
Feed constant	[mm/rev.]	58

1) At max. feed force

<b>Electrical data</b>		
Size		35
<b>Motor</b>		
Nominal voltage DC	[V]	24 (±15%)
Nominal current	[A]	5.3
Max. current consumption (load)	[A]	5.3
Max. current consumption (logic)	[mA]	300
<b>Encoder</b>		
Rotor position encoder		Absolute encoder, single turn
Rotor position sensor measuring principle		Magnetic
Rotor position encoder resolution	[bit]	16

<b>Interfaces</b>		
Size		35
<b>Parameterisation interface</b>		
IO-Link		Yes
User interface		Yes
<b>Digital inputs</b>		
Number		2
Switching logic		PNP
		NPN
Properties		Not galvanically isolated
		Configurable
Specification		Based on IEC 61131-2, type 1
Working area	[V]	24
<b>Digital outputs</b>		
Number		2
Switching logic		PNP
		NPN
Rotor position encoder		Absolute encoder, single turn
Properties		Not galvanically isolated
		Configurable
Max. current	[mA]	100



## Data sheet

Technical data – IO-Link		
Size		35
SIO-mode support		Yes
Communication mode		COM3 (230.4 kBaud)
Connection technology		Plug
Port class		A
Number of ports		1
Process data width OUT	[bytes]	2
Process data content OUT	[bit]	1 (Move in)
	[bit]	1 (Move out)
	[bit]	1 (Quit Error)
Process data width IN	[bytes]	2
Process data content IN	[bit]	1 (State Device)
	[bit]	1 (State Move)
	[bit]	1 (State in)
	[bit]	1 (State out)
Service data contents IN	[bit]	32 (Force)
	[bit]	32 (Position)
	[bit]	32 (Speed)
Minimum cycle time	[ms]	1
Data memory required	[Kilobyte]	0.5
Protocol version		sDevice V 1.1
Operating and environmental conditions		
Size		35
Insulation class		B
Ambient temperature	[°C]	0 ... +50
Storage temperature	[°C]	–20 ... +60
Note on ambient temperature		Above an ambient temperature of 30°C, the power must be reduced by 2% per K
Temperature monitoring		Switch-off for excessive temperature
		Integrated precise CMOS temperature sensor with analogue output
Relative humidity	[%]	0 ... 90
Protection class		III
Degree of protection		IP20
Duty cycle	[%]	100
CE marking		To EU EMC Directive
		To EU RoHS Directive
KC mark		KC-EMV
Certification		RCM mark
Vibration resistance		Transport application check with severity level 1 to FN 942017-4 and EN 61800-2 and EN 61800-5-1
Shock resistance		Shock test with severity level 1 to FN 942017-5 and EN 61800-2
Maintenance interval		Life-time lubrication

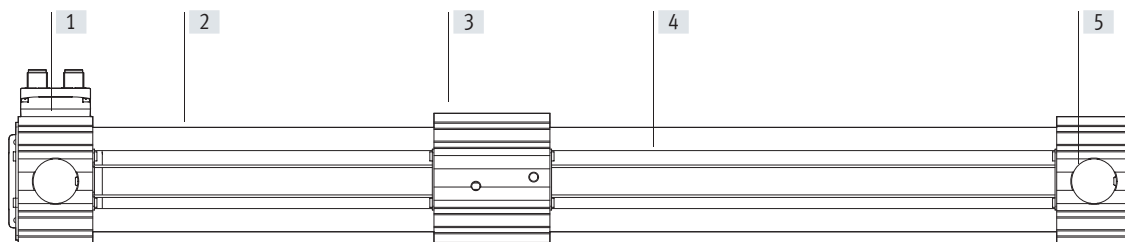


## Data sheet

Weight		
Size		35
Basic weight with 0 mm stroke	[g]	2490
Additional weight per 10 mm stroke	[g]	25
Additional weight of moving mass per 10 mm stroke	[g]	0.31

## Materials

Sectional view



Axis		
[1]	Bearing cap, profile	Anodised wrought aluminium alloy
[2]	Guide rods	Hardened and hard-chromium plated tempered steel
[3]	Slide, profile	Anodised wrought aluminium alloy
[4]	Toothed belt	Polychloroprene with glass cord and nylon coating
[5]	Belt pulley	High-alloy stainless steel
Note on materials		RoHS-compliant
		Contains paint-wetting impairment substances



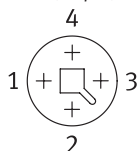
## Data sheet

## Pin allocation

## Power supply

## Plug

M12x1, 4-pin, T-coded to EN 61076-2-111

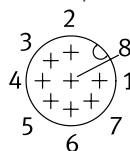


Pin	Function
1	Power supply (24 V DC)
2	Reference potential, power supply (GND)
3	Reserved, do not connect
4	Functional earth (FE)

## Logic interface

## Plug

M12x1, 8-pin, A-coded to EN 61076-2-101



When used with digital I/O	
Pin	Function
1	Logic power supply (24 V DC)
2	Digital output 1 (State "In")
3	Digital output 2 (State "Out")
4	Reference potential, logic power supply (GND)
5	Digital input 1 (Move "In")
6	Digital input 2 (Move "Out")
7	Reserved, do not connect
8	Reference potential, logic power supply (GND)

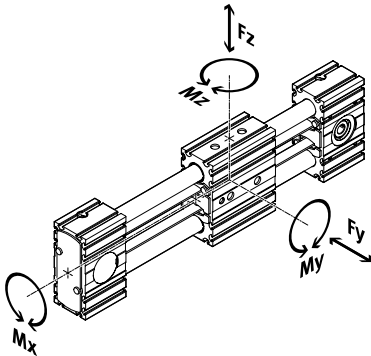
When used with IO-Link	
Pin	Function
1	L+ IO-Link power supply (24 V DC)
2	Reserved, do not connect
3	C/Q communication with the IO-Link master
4	L – Reference potential, IO-Link power supply (0 V)
5	Reserved, do not connect
6	Reserved, do not connect
7	Reserved, do not connect
8	L – Reference potential, IO-Link power supply (0 V)




Data sheet

Characteristic load values

The indicated forces and torques refer to the centre of the guide. The point of application of force is the point where the centre of the guide and the longitudinal centre of the slide intersect. These values must not be exceeded during dynamic operation. Special attention must be paid to the deceleration phase.



Max. permissible forces and torques for the bearing calculation, for a service life of 5000 km		
Size		35
Fy <sub>max.</sub>	[N]	50
Fz <sub>max.</sub>	[N]	50
Mx <sub>max.</sub>	[Nm]	2.5
My <sub>max.</sub>	[Nm]	8
Mz <sub>max.</sub>	[Nm]	8

 **Note**

For a guide system to have a service life of 5000 km, the load comparison factor must have a value of  $f_v \leq 1$ , based on the maximum permissible forces and torques for a service life of 5000 km.

This formula can be used to calculate a guide value.

The engineering software “PositioningDrives” is available for more precise calculations → [www.festo.com](http://www.festo.com)

If the axis is subjected to two or more of the indicated forces and torques simultaneously, the following equation must be satisfied in addition to the indicated maximum loads:

Calculating the load comparison factor:

$$f_v = \frac{|F_{y1}|}{F_{y2}} + \frac{|F_{z1}|}{F_{z2}} + \frac{|M_{x1}|}{M_{x2}} + \frac{|M_{y1}|}{M_{y2}} + \frac{|M_{z1}|}{M_{z2}} \leq 1$$

$F_1/M_1$  = dynamic value  
 $F_2/M_2$  = maximum value



## Data sheet

### Calculating the service life

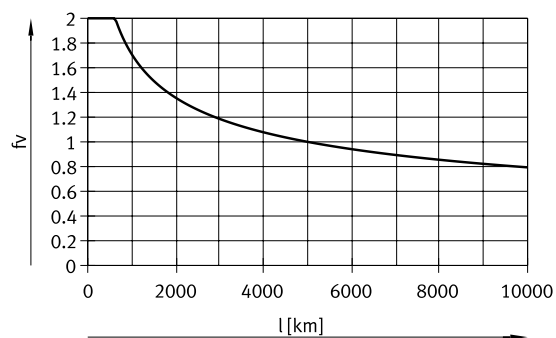
The service life of the guide depends on the load. To be able to make a statement as to the service life of the guide, the graph below plots the load comparison factor  $f_v$  against the service life.

These values are only theoretical. You must consult your local Festo contact for a load comparison factor  $f_v$  greater than 1.

#### Load comparison factor $f_v$ as a function of service life $l$

Example:

A user wants to move an  $x$  kg load. Using the formula (→ page 5) gives a value of 1.5 for the load comparison factor  $f_v$ . According to the graph, the guide would have a service life of approx. 1500 km. Reducing the acceleration reduces the  $M_y$  and  $M_z$  values. A load comparison factor  $f_v$  of 1 now gives a service life of 5000 km.



### Service life of the motor

The service life of the motor at nominal power is 20000 h.



## Data sheet

## Sizing example

Application data:

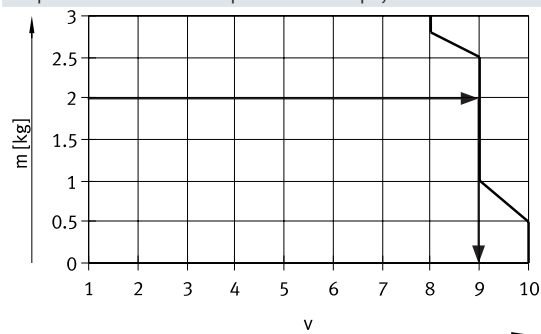
- Payload: 2 kg
- Mounting position: Horizontal
- Stroke: 600 mm
- Max. permitted positioning time: 1 s (one direction)

Step 1: Selection of the size from the table → page 7

## Mechanical data

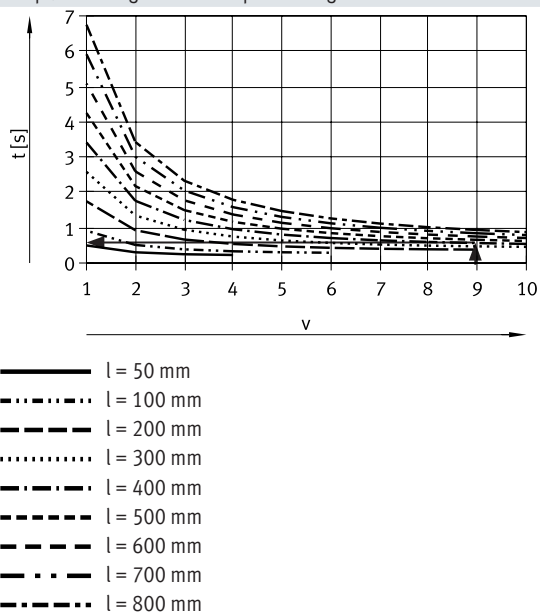
Size		35
Max. payload	[kg]	2.8

Step 2: Selection of max. speed level v for payload m



→ Max. speed level for payload: level 9

Step 3: Reading off the min. positioning time t for stroke l



→ Min. positioning time for 600 mm at level 9: 0.75 s

## Result

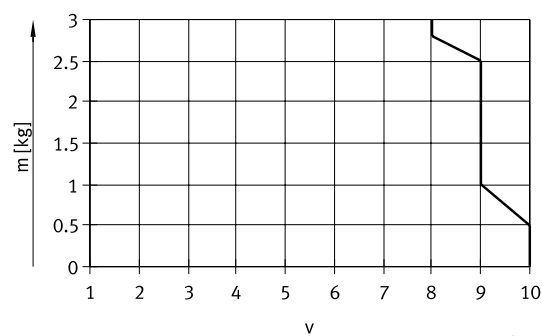
The application can be implemented using ELGE-TB-35-600. A minimum positioning time (one direction) of 0.75 s is achieved. Longer positioning times can be selected at any time using a lower speed level.



## Data sheet

Mass  $m$  as a function of speed level  $v$ 

Size 35



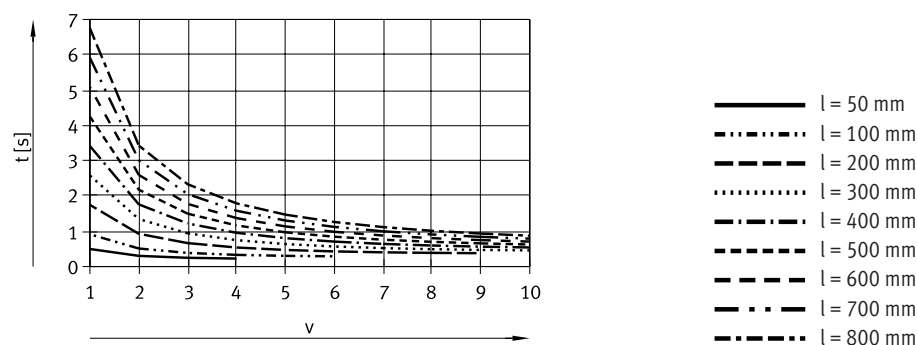
Horizontal

Note:

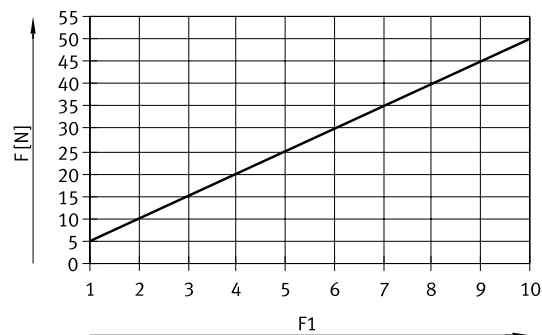
The lines represent the maximum values. The lower speed levels can be set at any time.

Positioning time  $t$  as a function of speed level  $v$  and stroke  $l$ 

Size 35

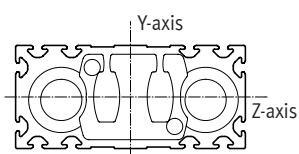


$l = 50$  mm  
 $l = 100$  mm  
 $l = 200$  mm  
 $l = 300$  mm  
 $l = 400$  mm  
 $l = 500$  mm  
 $l = 600$  mm  
 $l = 700$  mm  
 $l = 800$  mm

Feed force  $F$  as a function of force level  $F_1$ 

ELGE-TB-35

## 2nd moment of area



Size		35
$I_y$	[mm <sup>4</sup> ]	$4.19 \times 10^3$
$I_z$	[mm <sup>4</sup> ]	$3.77 \times 10^3$

## Recommended deflection limits

Adherence to a maximum deflection of 0.5 mm is recommended so as not to impair the functional performance of the axes. Greater deformation can result in increased friction, greater wear and reduced service life.

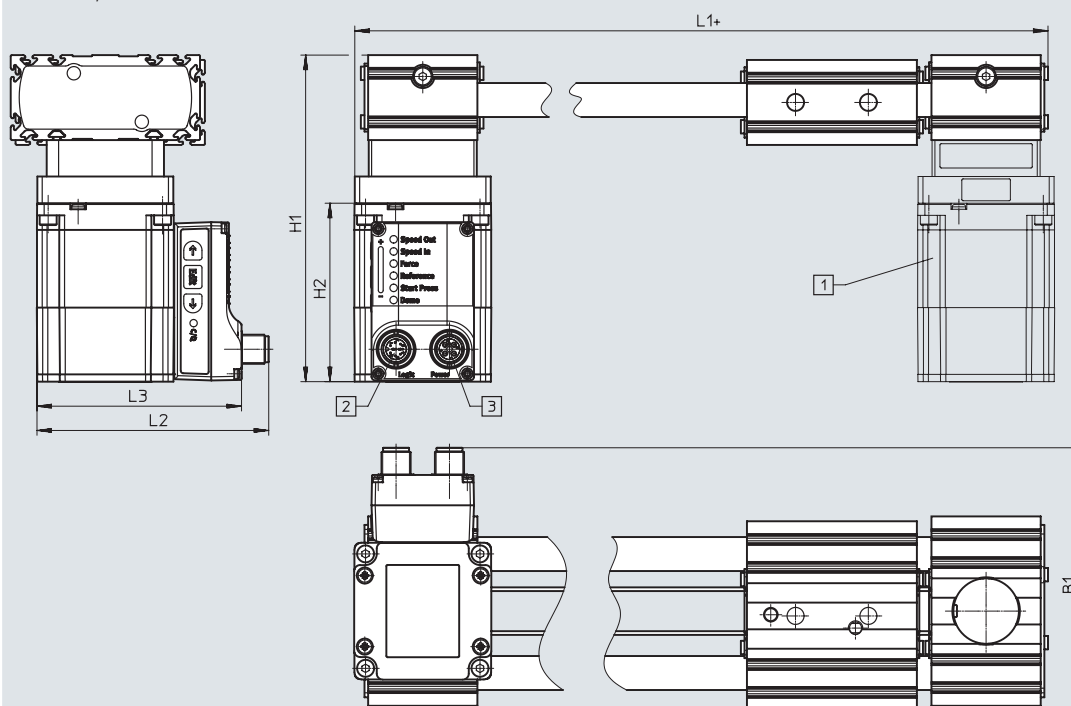


## Data sheet

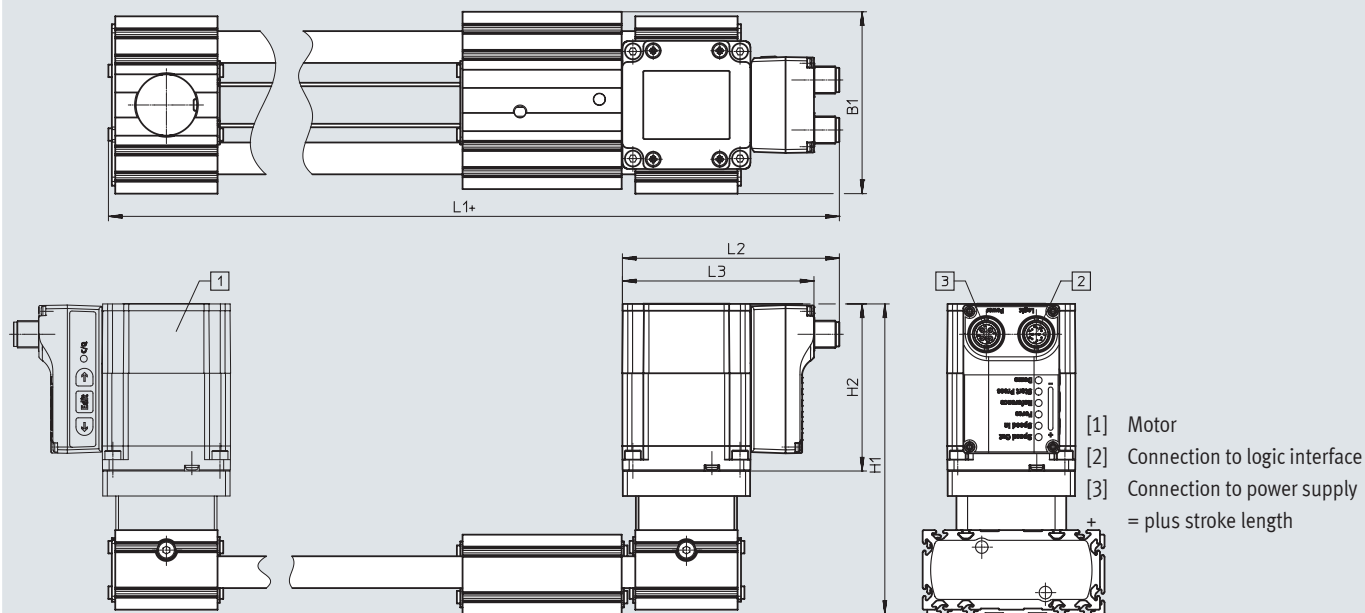
## Dimensions – With motor

Download CAD data → [www.festo.com](http://www.festo.com)

ELGE-...-AT/AD



ELGE-...-AR/AL

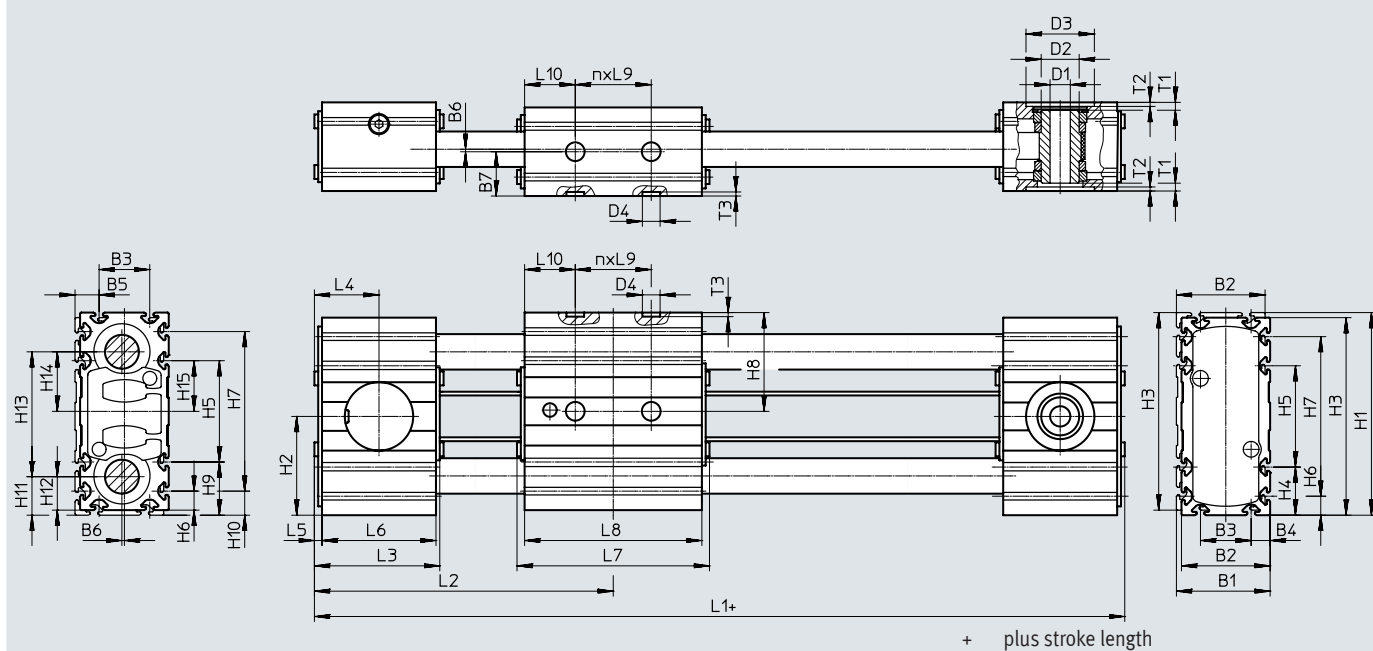


Size	B1	H1	H2	L1	L2	L3
ELGE-...-AT-FL	108.3	134.5	73.5	180.7	95.6	84.3
ELGE-...-AD-FR	108.3	134.5	73.5	180.7	95.6	84.3
ELGE-...-AR-RR	80	136.5	73.5	219.8	95.6	84.3
ELGE-...-AL-RL	80	136.5	73.5	219.8	95.6	84.3



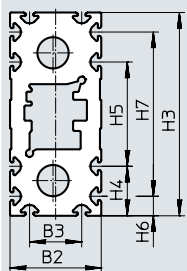
## Data sheet

## Dimensions

Download CAD data → [www.festo.com](http://www.festo.com)

## Profile

ELGR-35



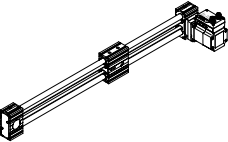
Size	B1	B2	B3	B4	B5	B6	B7	D1 Ø H7	D2 Ø	D3 Ø H7	D4 Ø H7	H1	H2	H3	H4	H5	H6
35	37	35	20	7.5	9.5	1	17.5	8	15	27	7	80	39	78	19	40	7.5

Size	H7	H8	H9	H10	H11	H12	H13	H14	H15	L3	L4	L5	L6	L9	T1	T2	T3 +0.1
35	63	39	21	9.5	15.5	13.5	49	23.5	20	51	25.5	3	45	30	3.1	1.6	1.6

Size	L1			L2			L7			L8			L10			n		
35	178			89			76			70			20			1		



## Ordering data

Ordering data	Size	Stroke	Part no.	Type
	35	100	8083931	ELGE-TB-35-100-0H-ST-M-H1-PLK-AA-AT-FR
		200	8083932	ELGE-TB-35-200-0H-ST-M-H1-PLK-AA-AT-FR
		300	8083933	ELGE-TB-35-300-0H-ST-M-H1-PLK-AA-AT-FR
		400	8083934	ELGE-TB-35-400-0H-ST-M-H1-PLK-AA-AT-FR
		500	8083935	ELGE-TB-35-500-0H-ST-M-H1-PLK-AA-AT-FR
		600	8083936	ELGE-TB-35-600-0H-ST-M-H1-PLK-AA-AT-FR



## Ordering data

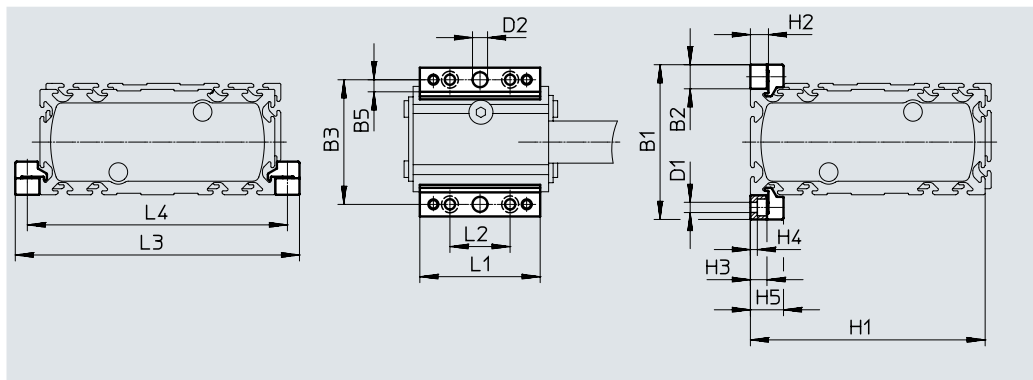
Ordering table		Conditions	Code	Enter code
Size	35			
Module no.	8083929			
Series	ELGE		ELGE	ELGE
Drive system	Toothed belt		-TB	-TB
Guide	Recirculating ball bearing guide			
Size	35		-...	
Stroke [mm]	50, 100, 150, 200, 250, 300, 350, 400, 450, 500, 550, 600, 650, 700, 750, 800		-...	
Stroke reserve [mm]	0		-OH	-OH
Motor type	Stepper motor ST		-ST	-ST
Controller	Integrated		-M	-M
Control panel	Integrated		-H1	-H1
Bus protocol/control	NPN and IO-Link		-NLK	
	PNP and IO-Link		-PLK	
End-position sensing	With integrated end-position sensing		-AA	-AA
Cable outlet direction	Top		-AT	
	Underneath		-AD	
	Left		-AL	
	Right		-AR	
Motor position	Front left		-FL	
	Front right		-FR	
	Rear left		-RL	
	Rear right		-RR	
Profile mounting	None			
	1 ... 2		+...MA	
Proximity switch (SIES), inductive, slot type 8, N/O contact, cable 7.5 m, including switch lug and sensor bracket	None			
	1 ... 6		...SA	
Proximity switch (SIES), inductive, slot type 8, N/C contact, cable 7.5 m, including switch lug and sensor bracket	None			
	1 ... 6		...SB	
Slot nut for mounting slot	None			
	1 ... 99		...NM	
Electrical accessories	None			
	Adapter for operation as IO-Link device		+L1	
Operating instructions	With operating instructions			
	Without operating instructions		DN	



## Accessories

**Profile mounting MUE**  
(order code MA)

Material:  
Anodised aluminium  
RoHS-compliant

**Dimensions and ordering data**

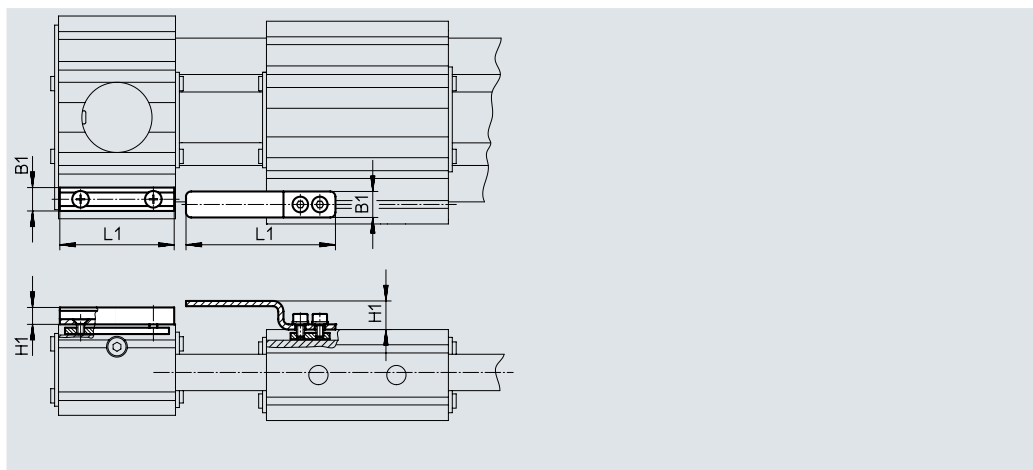
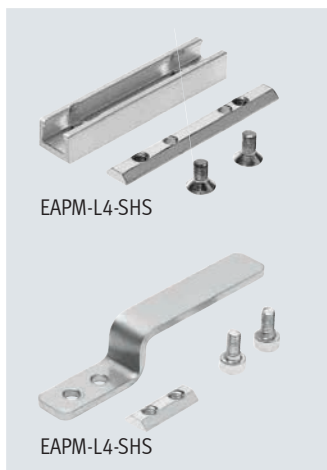
For size	B1	B2	B3	B5	D1 Ø	D2 Ø H7	H1	H2	H3	H4
35	51	8	43	4	3.4	5	78	6	5.5	2.3

For size	H5	L1	L2	L3	L4	Weight [g]	Part no.	Type
35	11	40	20	94	86	20	558042	MUE-50

**Sensor bracket EAPM-...-SHS****Switch lug EAPM-...-SLS**

(order code SA/SB)



Material:  
Switch lug: Galvanised steel  
Sensor bracket: Anodised wrought  
aluminium alloy  
RoHS-compliant

**Dimensions and ordering data**

For size	B1	H1	L1	Weight [g]	Part no.	Type
<b>Sensor bracket</b>						
35	9	6.5	44	20	567537	EAPM-L4-SHS
<b>Switch lug</b>						
35	10	11	57.5	15	567538	EAPM-L4-SLS

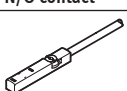
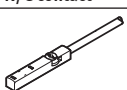




## Accessories

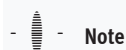
Ordering data		For size	Comment	Order code	Part no.	Type	PE <sup>1)</sup>
<b>Slot nut NST</b>							
		35	For mounting slot	NM	558045	NST-3-M3	1
<b>Centring sleeve ZBH<sup>2)</sup></b>							
		35	For slide	–	186717	ZBH-7	10

1) Packaging unit

2) 2 centring sleeves included in the scope of delivery of the axis

Ordering data – Proximity switches for T-slot, inductive							Data sheets → Internet: sies
	Type of mounting	Electrical connection	Switching output	Cable length [m]	Order code	Part no.	Type
N/O contact							
	Insertable in the slot from above, flush with the cylinder profile	Cable, 3-wire	PNP	7.5	SA	551386	SIES-8M-PS-24V-K-7,5-OE
		Plug M8x1, 3-pin		0.3	–	551387	SIES-8M-PS-24V-K-0,3-M8D
		Cable, 3-wire	NPN	7.5	–	551396	SIES-8M-NS-24V-K-7,5-OE
		Plug M8x1, 3-pin		0.3	–	551397	SIES-8M-NS-24V-K-0,3-M8D
N/C contact							
	Insertable in the slot from above, flush with the cylinder profile	Cable, 3-wire	PNP	7.5	SB	551391	SIES-8M-PO-24V-K-7,5-OE
		Plug M8x1, 3-pin		0.3	–	551392	SIES-8M-PO-24V-K-0,3-M8D
		Cable, 3-wire	NPN	7.5	–	551401	SIES-8M-NO-24V-K-7,5-OE
		Plug M8x1, 3-pin		0.3	–	551402	SIES-8M-NO-24V-K-0,3-M8D


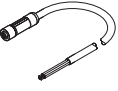
Ordering data – Connecting cables					Data sheets → Internet: nebu
	Electrical connection, left	Electrical connection, right	Cable length [m]	Part no.	Type
	Straight socket, M8x1, 3-pin	Cable, open end, 3-wire	2.5	541333	NEBU-M8G3-K-2.5-LE3
			5.0	541334	NEBU-M8G3-K-5-LE3
	Angled socket, M8x1, 3-pin	Cable, open end, 3-wire	2.5	541338	NEBU-M8W3-K-2.5-LE3
			5.0	541341	NEBU-M8W3-K-5-LE3


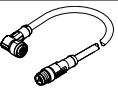

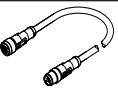
**Note**

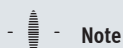
Proximity switches are optional and only required in order to sense any intermediate positions.



## Accessories

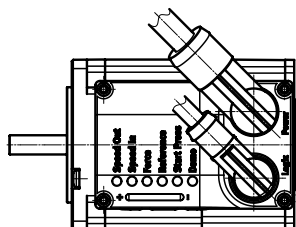
Ordering data – Supply cables						Data sheets → Internet: nebl
	Electrical connection, left	Electrical connection, right	Cable length [m]	Part no.	Type	
	Angled socket, M12x1, 4-pin	Cable, open end, 4-wire	2	8080778	NEBL-T12W4-E-2-N-LE4	
			5	8080779	NEBL-T12W4-E-5-N-LE4	
			10	8080780	NEBL-T12W4-E-10-N-LE4	
			15	8080781	NEBL-T12W4-E-15-N-LE4	
	Straight socket, M12x1, 4-pin	Cable, open end, 4-wire	2	8080790	NEBL-T12G4-E-2-N-LE4	
			5	8080791	NEBL-T12G4-E-5-N-LE4	
			10	8080792	NEBL-T12G4-E-10-N-LE4	
			15	8080793	NEBL-T12G4-E-15-N-LE4	

Ordering data – Connecting cables						Data sheets → Internet: nebc
	Electrical connection, left	Electrical connection, right	Cable length [m]	Part no.	Type	
	Angled socket, M12x1, 8-pin	Cable, open end, 8-wire	2	8094476	NEBC-M12W8-E-2-N-B-LE8	
			5	8094478	NEBC-M12W8-E-5-N-B-LE8	
			10	8094481	NEBC-M12W8-E-10-N-B-LE8	
			15	8094479	NEBC-M12W8-E-15-N-B-LE8	
	Straight socket, M12x1, 8-pin	Straight plug, M12x1, 8-pin	2	8080786	NEBC-M12W8-E-2-N-M12G8	
			5	8080787	NEBC-M12W8-E-5-N-M12G8	
			10	8080788	NEBC-M12W8-E-10-N-M12G8	
			15	8080789	NEBC-M12W8-E-15-N-M12G8	
	Straight socket, M12x1, 8-pin	Cable, open end, 8-wire	2	8094480	NEBC-M12G8-E-2-N-B-LE8	
			5	8094477	NEBC-M12G8-E-5-N-B-LE8	
			10	8094482	NEBC-M12G8-E-10-N-B-LE8	
			15	8094475	NEBC-M12G8-E-15-N-B-LE8	
	Straight socket, M12x1, 8-pin	Straight plug, M12x1, 8-pin	2	8080782	NEBC-M12G8-E-2-N-M12G8	
			5	8080783	NEBC-M12G8-E-5-N-M12G8	
			10	8080784	NEBC-M12G8-E-10-N-M12G8	
			15	8080785	NEBC-M12G8-E-15-N-M12G8	

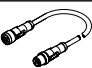


## Note

The cables are positioned at a 45° angle to the axis.



Ordering data – IO-Link master USB					Data sheets → Internet: cdsu
	Description	Cable length [m]	Part no.	Type	
	<ul style="list-style-type: none"> <li>For using the unit with IO-Link</li> <li>An external power supply plug is additionally required (not in scope of delivery)</li> </ul>	0.3	8091509	CDSU-1	

Ordering data – Adapter					Data sheets → Internet: nefc
	Electrical connection, left	Electrical connection, right	Cable length [m]	Part no.	Type
	Straight socket, M12x1, 8-pin	Straight plug, M12x1, 5-pin	0.3	8080777	NEFC-M12G8-0.3-M12G5-LK



Festo - Your Partner in Automation



**1 Festo Inc.**  
5300 Explorer Drive  
Mississauga, ON L4W 5G4  
Canada

**Festo Customer Interaction Center**  
Tel: 1 877 463 3786  
Fax: 1 877 393 3786  
Email: customer.service.ca@festo.com



**2 Festo Pneumatic**  
Av. Ceylán 3,  
Col. Tequesquináhuac  
54020 Tlalnepantla,  
Estado de México

**Multinational Contact Center**  
01 800 337 8669  
ventas.mexico@festo.com



**3 Festo Corporation**  
1377 Motor Parkway  
Suite 310  
Islandia, NY 11749

**Festo Customer Interaction Center**  
1 800 993 3786  
1 800 963 3786  
customer.service.us@festo.com



**4 Regional Service Center**  
7777 Columbia Road  
Mason, OH 45040

Connect with us

[www.festo.com/socialmedia](http://www.festo.com/socialmedia)



[www.festo.com](http://www.festo.com)

Subject to change