

Quick exhaust valves SE/SEU

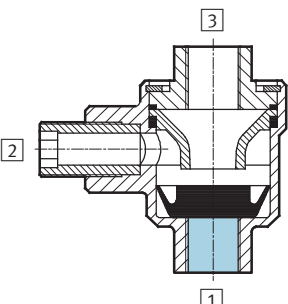
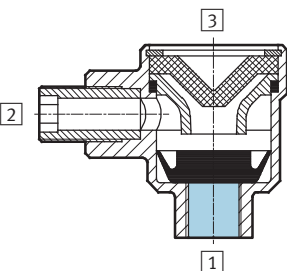
FESTO

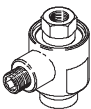

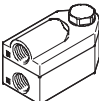



Quick exhaust valves SE/SEU

Key features, product range overview and type codes

FESTO

Features		
Function	SE	SEU
<p>These components allow higher piston speeds to be achieved on the return stroke of single and double-acting cylinders.</p> <p>Compressed air flows from the pilot valve and via the quick exhaust valve to the cylinder. The exhaust port 3 is closed at this time. When the pressure at 1 falls, exhaust flow occurs from 2 to 3.</p>	<p>In order to achieve the full benefit of the quick exhaust function, the valve must be connected directly to the port of the cylinder.</p> <p>In the quick exhaust valve SEU the exhaust noise is reduced by a silencer.</p>	 

Product range overview						
Function	Version	Type	Pneumatic connection		→ Page/Internet	
			1	2		
Quick exhaust valves	Compact design					
		SE	Without silencer	G1/8, G1/4, G3/8, G1/2, G3/4	G1/8, G1/4, G3/8, G1/2, G3/4	3
		SEU	With silencer	G1/8, G1/4, G3/8, G1/2	G1/8, G1/4, G3/8, G1/2	6
	Flat design					
		VBQF-D	Without silencer	G1/8 G1/4	G1/8, QS-6 G1/4	vbqf
	VBQF-U	With silencer	G1/8 G1/4	G1/8, QS-6 G1/4, QS-8	vbqf	

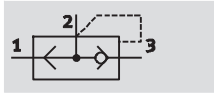
Type codes			
		SE	1/8 B
Type			
SE	Quick exhaust valve		
SEU	Quick exhaust valve with silencer		
Pneumatic connection			
1/8	G ¹ / ₈		
1/4	G ¹ / ₄		
3/8	G ³ / ₈		
1/2	G ¹ / ₂		
3/4	G ³ / ₄		
Generation			
	Series A		
B	Series B		

Quick exhaust valves SE

Technical data

FESTO

Function



Flow rate

300 ... 4,560 l/min

Temperature range

–20 ... +75 °C

Pressure

0.2 ... 10 bar

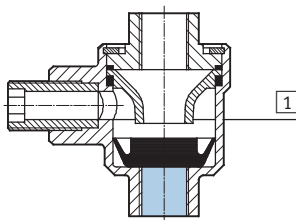


General technical data					
Pneumatic connection 1	G1/8	G1/4	G3/8	G1/2	G3/4
Pneumatic connection 2	G1/8	G1/4	G3/8	G1/2	G3/4
Pneumatic connection 3	G1/8	G1/4	G3/8	G1/2	G3/4
Nominal size [mm]	5	7	11	15	19
Valve function	Quick exhaust				
Type of mounting	Screw-in				Via through-hole
Mounting position	Any				
Noise level [dB(A)]	100	–			

Operating and environmental conditions					
Pneumatic connection 1	G1/8	G1/4	G3/8	G1/2	G3/4
Operating pressure [bar]	0.5 ... 10	0.5 ... 10	0.2 ... 10	0.3 ... 10	0.5 ... 10
Operating medium	Compressed air in accordance with ISO 8573-1:2010 [7:4:4]	Compressed air in accordance with ISO 8573-1:2010 [7:-:-]			
Note on operating/pilot medium	Operation with lubricated medium possible (in which case lubricated operation will always be required)				
Ambient temperature [°C]	-20 ... +75				
Temperature of medium [°C]	-20 ... +75				

Materials

Sectional view



Quick exhaust valve		
1	Housing	G1/8, G1/4 G3/8, G1/2 G3/4
		Die-cast zinc Die-cast aluminium Anodised wrought aluminium alloy
	–	Seals
		NBR

Quick exhaust valves SE

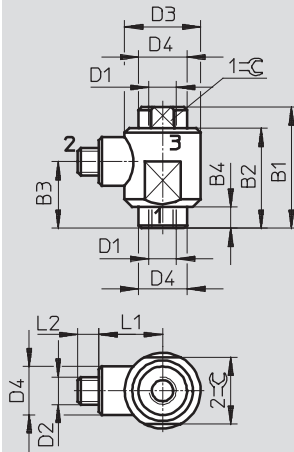
Technical data

FESTO

Dimensions

Download CAD Data → www.festo.com/us/cad

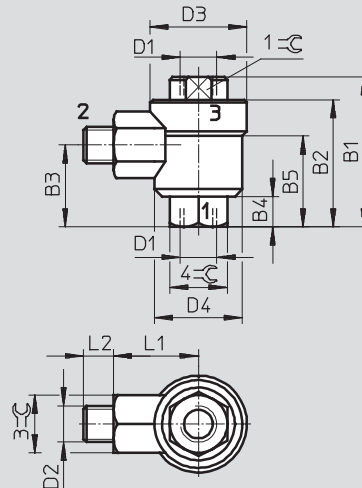
Pneumatic connection G $\frac{1}{8}$



1 = Inlet port

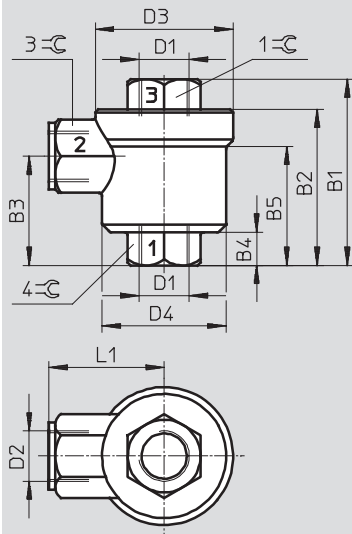
2 = Outlet port

Pneumatic connection G $\frac{1}{4}$



3 = Exhaust port

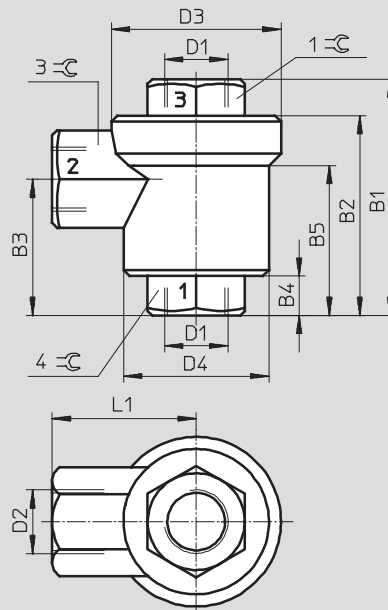
Pneumatic connection G $\frac{3}{8}$



1 = Inlet port

2 = Outlet port

Pneumatic connection G $\frac{1}{2}$



3 = Exhaust port

Type	Connection		B1	B2	B3	B4	B5	D3 Ø	D4 Ø	L1	L2	1=	2=	3=	4=
	D1	D2													
SE-1/8-B	G $\frac{1}{8}$	G $\frac{1}{8}$	40	33	22	7	–	25	16	21	7	14	22	–	–
SE-1/4-B	G $\frac{1}{4}$	G $\frac{1}{4}$	49.5	42	27	10	30	33	29	28	10	17	–	19	19
SE-3/8-B	G $\frac{3}{8}$	G $\frac{3}{8}$	61.5	51.5	36	11	39.2	45.5	41	38	–	24	–	24	24
SE-1/2-B	G $\frac{1}{2}$	G $\frac{1}{2}$	78	66	45	13	49.5	56.5	48	47.5	–	30	–	32	32

Quick exhaust valves SE

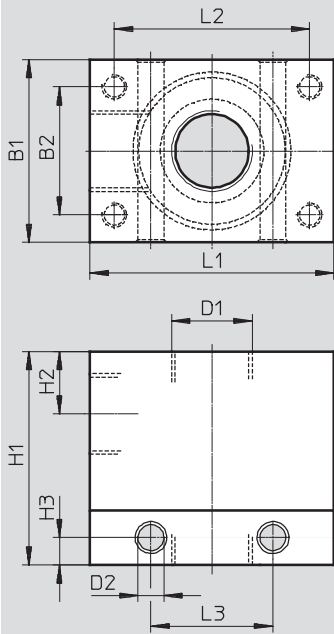
Technical data

FESTO

Dimensions

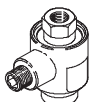
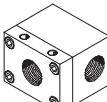
Download CAD Data → www.festo.com/us/cad

Pneumatic connection G $\frac{3}{4}$



Type	Connection D1	B1	B2	D2 Ø	H1	H2	H3	L1	L2	L3
SE- $\frac{3}{4}$	G $\frac{3}{4}$	60	42	8.5	70	20.5	9	80	64	40

Ordering data

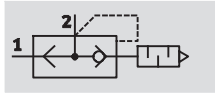
	Pneumatic connection			Standard nominal flow rate qnN at 6 → 5 bar		Weight [g]	Part No.	Type
				Pressurisation 1 → 2	Exhausting 2 → 3			
	1	2	3	[l/min]	[l/min]			
	G $\frac{1}{8}$	G $\frac{1}{8}$	G $\frac{1}{8}$	300	660	75	9685	SE- $\frac{1}{8}$ -B
	G $\frac{1}{4}$	G $\frac{1}{4}$	G $\frac{1}{4}$	960	1,200	100	9686	SE- $\frac{1}{4}$ -B
	G $\frac{3}{8}$	G $\frac{3}{8}$	G $\frac{3}{8}$	2,880	2,760	125	9687	SE- $\frac{3}{8}$ -B
	G $\frac{1}{2}$	G $\frac{1}{2}$	G $\frac{1}{2}$	4,560	6,480	200	9688	SE- $\frac{1}{2}$ -B
	G $\frac{3}{4}$	G $\frac{3}{4}$	G $\frac{3}{4}$	2,500	7,500	710	2280	SE- $\frac{3}{4}$

Quick exhaust valves SEU

Technical data

FESTO

Function



Flow rate

300 ... 4,560 l/min

Temperature range

-20 ... +75 °C

Pressure

0.2 ... 10 bar

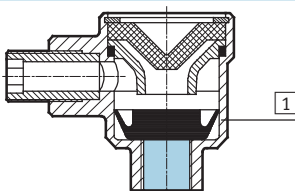


General technical data				
Pneumatic connection 1	G1/8	G1/4	G3/8	G1/2
Pneumatic connection 2	G1/8	G1/4	G3/8	G1/2
Nominal size [mm]	5	7	11	15
Valve function	Quick exhaust			
Type of mounting	Screw-in			
Mounting position	Any			
Noise level [dB(A)]	85	85	83	86

Operating and environmental conditions				
Pneumatic connection 1	G1/8	G1/4	G3/8	G1/2
Operating pressure [bar]	0.5 ... 10	0.5 ... 10	0.2 ... 10	0.3 ... 10
Operating medium	Compressed air in accordance with ISO 8573-1:2010 [7:4:4]	Compressed air in accordance with ISO 8573-1:2010 [7:-:-]		
Note on operating/pilot medium	Operation with lubricated medium possible (in which case lubricated operation will always be required)			
Ambient temperature [°C]	-20 ... +75			
Temperature of medium [°C]	-20 ... +75			

Materials

Sectional view



Quick exhaust valve		
1	Housing	G1/8, G1/4 G3/8, G1/2
		Die-cast zinc Die-cast aluminium
-	Seals	NBR

Quick exhaust valves SEU

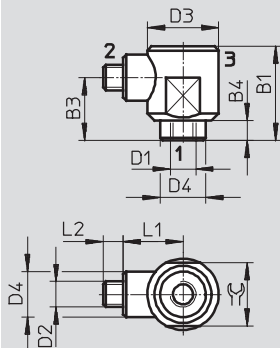
Technical data

FESTO

Dimensions

Download CAD Data → www.festo.com/us/cad

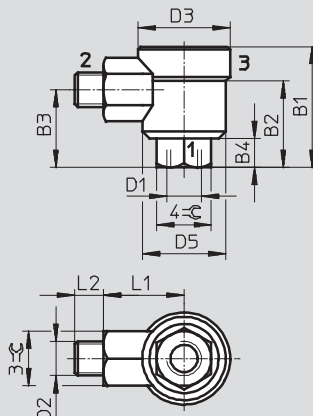
Pneumatic connection G $\frac{1}{8}$



1 = Inlet port

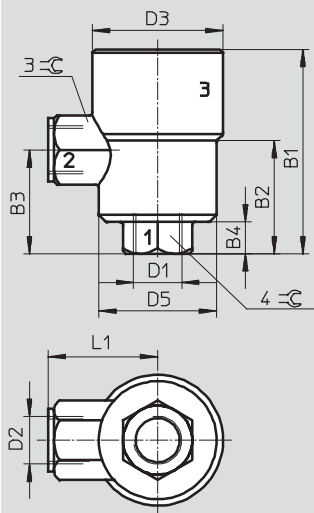
2 = Outlet port

Pneumatic connection G $\frac{1}{4}$



3 = Exhaust port

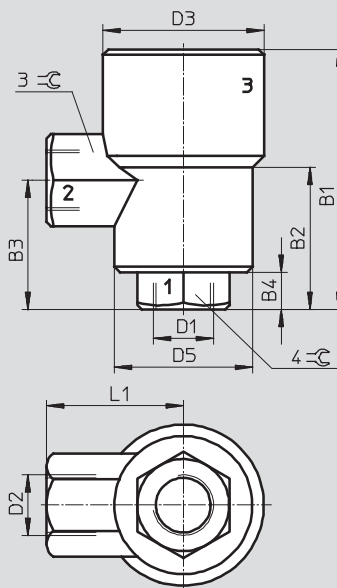
Pneumatic connection G $\frac{3}{8}$



1 = Inlet port

2 = Outlet port

Pneumatic connection G $\frac{1}{2}$



3 = Exhaust port

Type	Connection		B1	B2	B3	B4	D3 Ø	D4 Ø	D5 Ø	L1	L2	φ	3-φ	4-φ
	D1	D2												
SEU-1/8	G $\frac{1}{8}$	G $\frac{1}{8}$	33	–	22	7	25	16	–	21	7	22	–	–
SEU-1/4	G $\frac{1}{4}$	G $\frac{1}{4}$	42.5	30	27	9.5	33	–	29	28	10	–	19	19
SEU-3/8	G $\frac{3}{8}$	G $\frac{3}{8}$	71	39	36	11	45.5	–	41	38	–	–	24	24
SEU-1/2	G $\frac{1}{2}$	G $\frac{1}{2}$	90.5	49.5	45	13	56.5	–	48	47.5	–	–	32	32

Ordering data

	Pneumatic connection		Standard nominal flow rate q _N at 6 bar → 5 bar		Standard flow rate q _N at 6 bar → 0 bar	Weight [g]	Part No.	Type
			Pressurisation 1 → 2	Exhausting 2 → 3	Exhausting 2 → 3			
	1	2	[l/min]	[l/min]	[l/min]			
	G $\frac{1}{8}$	G $\frac{1}{8}$	300	550	1,000	65	4616	SEU-1/8
	G $\frac{1}{4}$	G $\frac{1}{4}$	960	1,100	2,300	120	6753	SEU-1/4
	G $\frac{3}{8}$	G $\frac{3}{8}$	2,880	2,280	4,680	160	6755	SEU-3/8
	G $\frac{1}{2}$	G $\frac{1}{2}$	4,560	4,020	6,500	320	6822	SEU-1/2

Quick exhaust valves SE/SEU

Accessories

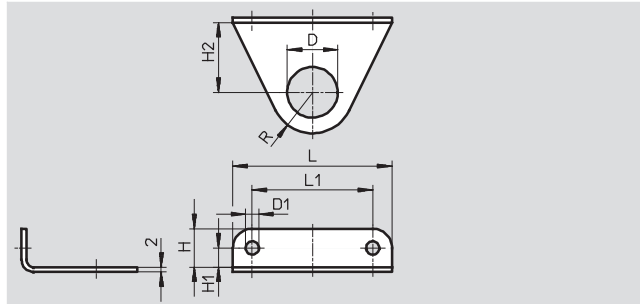
FESTO

Mounting bracket HSE

For attachment of quick exhaust valve
SE/SEU, irrespective of cylinder.

Material:

Anodised wrought aluminium alloy



Dimensions and ordering data											
For connecting thread	D Ø	D1 Ø	H	H1	H2	L	L1	R	Weight [g]	Part No.	Type
G1/8	10	4.5	11	6	13.5	40	30	10	5.1	8710	HSE-1/8
G1/4	13.2	4.5	11	6	17	42	32	14	6.4	8711	HSE-1/4
G3/8	16.8	5.5	13	7	23.5	54	42	13	9	8712	HSE-3/8
G1/2	21	5.5	16	8	29	66	50	17	14	8713	HSE-1/2

Product Range and Company Overview

A Complete Suite of Automation Services

Our experienced engineers provide complete support at every stage of your development process, including: conceptualization, analysis, engineering, design, assembly, documentation, validation, and production.



Custom Automation Components
Complete custom engineered solutions



Custom Control Cabinets
Comprehensive engineering support and on-site services



Complete Systems
Shipment, stocking and storage services

The Broadest Range of Automation Components

With a comprehensive line of more than 30,000 automation components, Festo is capable of solving the most complex automation requirements.



Electromechanical
Electromechanical actuators, motors, controllers & drives



Pneumatics
Pneumatic linear and rotary actuators, valves, and air supply



PLCs and I/O Devices
PLC's, operator interfaces, sensors and I/O devices

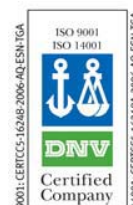
Supporting Advanced Automation... As No One Else Can!

Festo is a leading global manufacturer of pneumatic and electromechanical systems, components and controls for industrial automation, with more than 12,000 employees in 56 national headquarters serving more than 180 countries. For more than 80 years, Festo has continuously elevated the state of manufacturing with innovations and optimized motion control solutions that deliver higher performing, more profitable automated manufacturing and processing equipment. Our dedication to the advancement of automation extends beyond technology to the education and development of current and future automation and robotics designers with simulation tools, teaching programs, and on-site services.

Quality Assurance, ISO 9001 and ISO 14001 Certifications

Festo Corporation is committed to supply all Festo products and services that will meet or exceed our customers' requirements in product quality, delivery, customer service and satisfaction.

To meet this commitment, we strive to ensure a consistent, integrated, and systematic approach to management that will meet or exceed the requirements of the ISO 9001 standard for Quality Management and the ISO 14001 standard for Environmental Management.



© Copyright 2008, Festo Corporation. While every effort is made to ensure that all dimensions and specifications are correct, Festo cannot guarantee that publications are completely free of any error, in particular typing or printing errors. Accordingly, Festo cannot be held responsible for the same. For Liability and Warranty conditions, refer to our "Terms and Conditions of Sale", available from your local Festo office. All rights reserved. No part of this publication may be reproduced, distributed, or transmitted in any form or by any means, electronic, mechanical, photocopying or otherwise, without the prior written permission of Festo. All technical data subject to change according to technical update.



Printed on recycled paper at New Horizon Graphic, Inc., FSC certified as an environmentally friendly printing plant.

Festo North America

Festo Regional Contact Center

5300 Explorer Drive
Mississauga, Ontario L4W 5G4
Canada

USA Customers:

For ordering assistance,

Call: 1.800.99.FESTO (1.800.993.3786)

Fax: 1.800.96.FESTO (1.800.963.3786)

Email: customer.service@us.festo.com

For technical support,

Call: 1.866.GO.FESTO (1.866.463.3786)

Fax: 1.800.96.FESTO (1.800.963.3786)

Email: product.support@us.festo.com

Canadian Customers:

Call: 1.877.GO.FESTO (1.877.463.3786)

Fax: 1.877.FX.FESTO (1.877.393.3786)

Email: festo.canada@ca.festo.com

USA Headquarters

Festo Corporation
395 Moreland Road
P.O. Box 18023
Hauppauge, NY 11788, USA
www.festo.com/us

USA Sales Offices

Appleton

North 922 Tower View Drive, Suite N
Greenville, WI 54942, USA

Boston

120 Presidential Way, Suite 330
Woburn, MA 01801, USA

Chicago

1441 East Business Center Drive
Mt. Prospect, IL 60056, USA

Dallas

1825 Lakeway Drive, Suite 600
Lewisville, TX 75057, USA

Detroit – Automotive Engineering Center

2601 Cambridge Court, Suite 320
Auburn Hills, MI 48326, USA

New York

395 Moreland Road
Hauppauge, NY 11788, USA

Silicon Valley

4935 Southfront Road, Suite F
Livermore, CA 94550, USA

United States



USA Headquarters, East: Festo Corp., 395 Moreland Road, Hauppauge, NY 11788

Phone: 1.631.435.0800; Fax: 1.631.435.8026;

Email: info@festo-usa.com

www.festo.com/us

Canada



Headquarters: Festo Inc., 5300 Explorer Drive, Mississauga, Ontario L4W 5G4

Phone: 1.905.624.9000; Fax: 1.905.624.9001;

Email: festo.canada@ca.festo.com

www.festo.ca

Mexico



Headquarters: Festo Pneumatic, S.A., Av. Ceylán 3, Col. Tequesquahuac,
54020 Tlalneapantla, Edo. de México

Phone: 011 52 [55] 53 21 66 00; Fax: 011 52 [55] 53 21 66 65;

Email: festo.mexico@mx.festo.com

www.festo.com/mx

Central USA

Festo Corporation
1441 East Business
Center Drive
Mt. Prospect, IL 60056, USA
Phone: 1.847.759.2600
Fax: 1.847.768.9480



Western USA

Festo Corporation
4935 Southfront Road,
Suite F
Livermore, CA 94550, USA
Phone: 1.925.371.1099
Fax: 1.925.245.1286



Festo Worldwide

Argentina Australia Austria Belarus Belgium Brazil Bulgaria Canada Chile China Colombia Croatia Czech Republic Denmark
Estonia Finland France Germany Great Britain Greece Hong Kong Hungary India Indonesia Iran Ireland Israel Italy Japan Latvia
Lithuania Malaysia Mexico Netherlands New Zealand Norway Peru Philippines Poland Romania Russia Serbia Singapore
Slovakia Slovenia South Africa South Korea Spain Sweden Switzerland Taiwan Thailand Turkey Ukraine United States Venezuela

www.festo.com