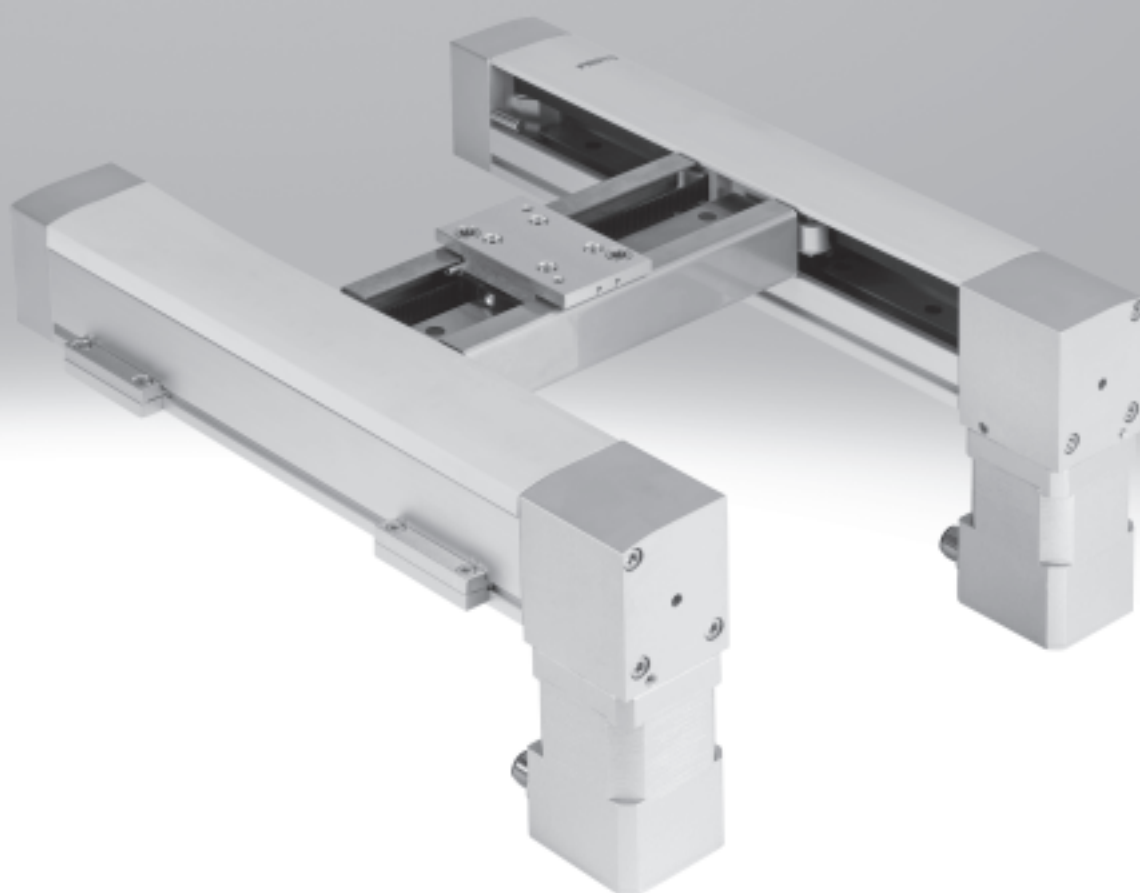


Planar surface gantries EXCM

FESTO



Planar surface gantries EXCM

Key features

FESTO

At a glance

General

- Compact gantry distinguished by its high level of functionality in a very small installation space
- The drive design minimises the moving mass
- A perfectly matched drive and controller
- The kinematic system is actuated via 2 stepper motors with integrated optical encoder (closed loop) and one matching two-axis controller
- Can be actuated using two operating modes:
 - Direct mode via Ethernet and CAN
 - Record selection via digital I/O, Ethernet and CAN
- EXCM-30 permits flexible motor mounting

Application examples

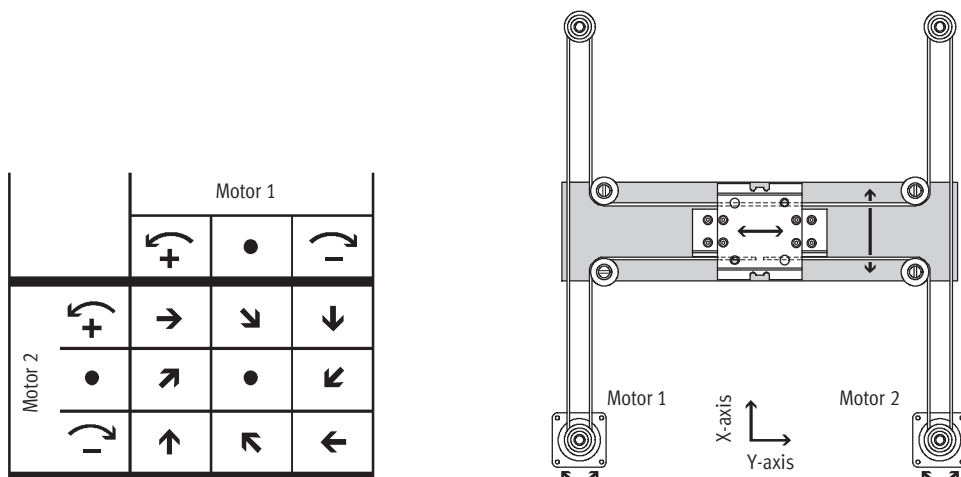
- Feeding, pressing, joining components
- Dispensing liquids
- Mounting electronic components

Functional principle

A slide is moved in a two-dimensional space (X-axis/Y-axis) via a toothed belt. The system is powered via 2 fixed motors in position-controlled mode

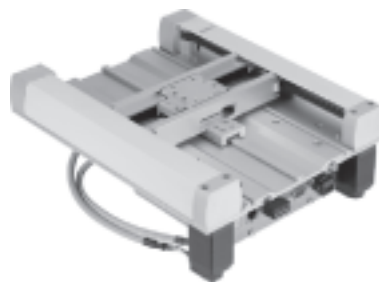
(closed loop). The motors are coupled to the toothed belt. The belt is guided via pulleys in such a way that the slide

can approach any position in a working space when the motors are actuated accordingly.

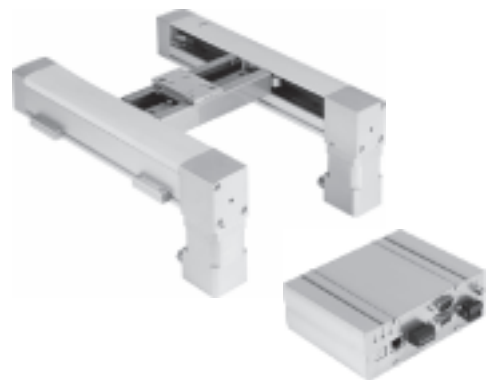


Planar surface gantry

EXCM-10



EXCM-30



Type	EXCM-10	EXCM-30
Guide	Plain-bearing guide	Recirculating ball bearing guide
Stroke of the		
X-axis [mm]	150, 260, 300, 360, 460, 700	90 ... 700
Y-axis [mm]	110	110, 160, 210, 260, 310, 360
Effective load [kg]	0.5	3
Repetition accuracy [mm]	±0.1	±0.05
Controller	Attached	Separate

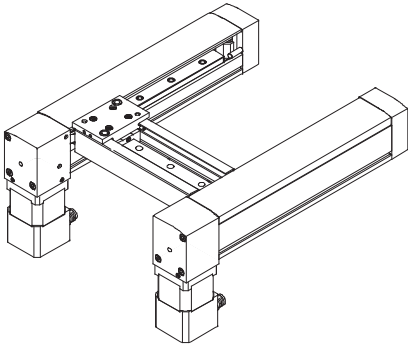
Planar surface gantries EXCM

Key features

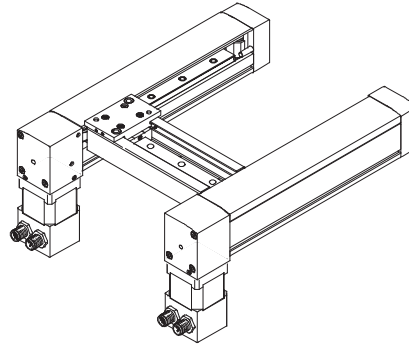
EXCM-30 – Motor mounting variants

Underneath

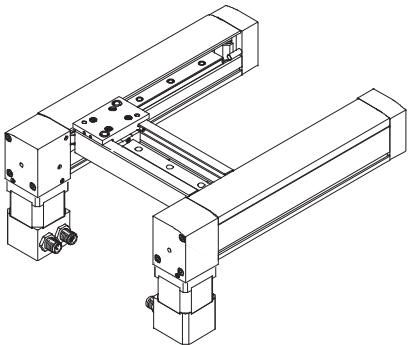
EXCM-30-...-B1 – Cable outlet at front



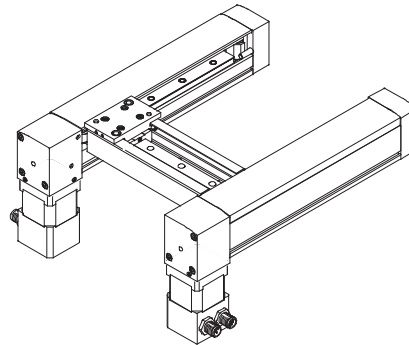
EXCM-30-...-B2 – Cable outlet at rear



EXCM-30-...-B3 – Cable outlet inside

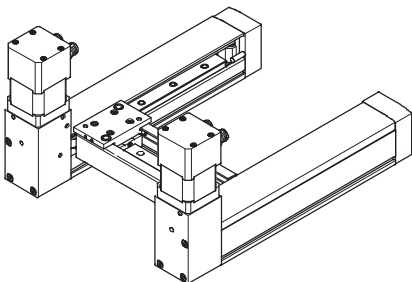


EXCM-30-...-B4 – Cable outlet outside

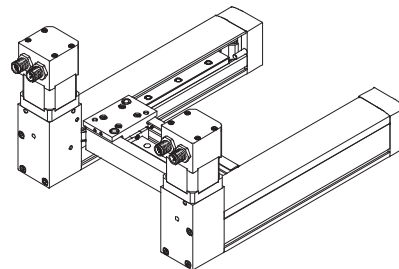


On top

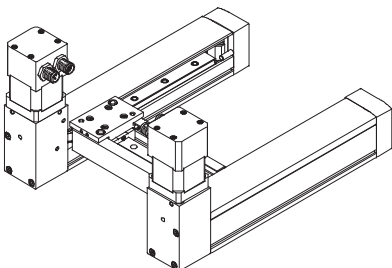
EXCM-30-...-T1 – Cable outlet at front



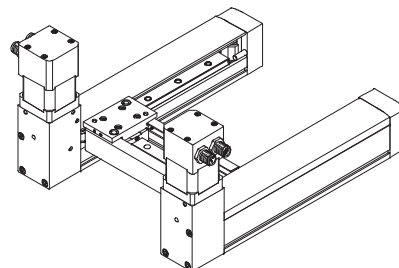
EXCM-30-...-T2 – Cable outlet at rear



EXCM-30-...-T3 – Cable outlet inside



EXCM-30-...-T4 – Cable outlet outside



Planar surface gantries EXCM

Type codes

FESTO

EXCM-10

		EXCM	-	10	-	260	-	110	-	GF	-	ST	-	B	-	E1
Type																
EXCM	Planar surface gantry															
Size																
Stroke of the X-axis [mm]																
Stroke of the Y-axis [mm]																
Guide																
GF	Plain-bearing guide															
Motor type																
ST	Stepper motors															
Motor attachment position																
B	Underneath															
Controller																
E1	Flange-mounted on the planar surface gantry															

Note

Ordering data → 20

Planar surface gantries EXCM

Type codes

FESTO

EXCM-30

		EXCM	-	30	-	300	-	210	-	KF	-	ST	-	B1	-	E3	-	DE
Type																		
EXCM	Planar surface gantry																	
Size																		
Stroke of the X-axis [mm]																		
Stroke of the Y-axis [mm]																		
Guide																		
KF	Recirculating ball bearing guide																	
Motor type																		
ST	Stepper motors																	
SB	Stepper motors with brake																	
W	Without stepper motors																	
Motor attachment position																		
B	Underneath																	
B1	Underneath, cable outlets to front																	
B2	Underneath, cable outlets to rear																	
B3	Underneath, cable outlets inside																	
B4	Underneath, cable outlets outside																	
T	On top																	
T1	On top, cable outlets to front																	
T2	On top, cable outlets to rear																	
T3	On top, cable outlets inside																	
T4	On top, cable outlets outside																	
Controller																		
-	Without controller																	
E2	With controller, motor and encoder cable (0.5 m)																	
E3	With controller, motor and encoder cable (1 m)																	
E4	With controller, motor and encoder cable (1.5 m)																	
E5	With controller, motor and encoder cable (2 m)																	
Language of documentation																		
DE	German																	
EN	English																	
ES	Spanish																	
FR	French																	
IT	Italian																	
RU	Russian																	
SV	Swedish																	
ZH	Chinese																	

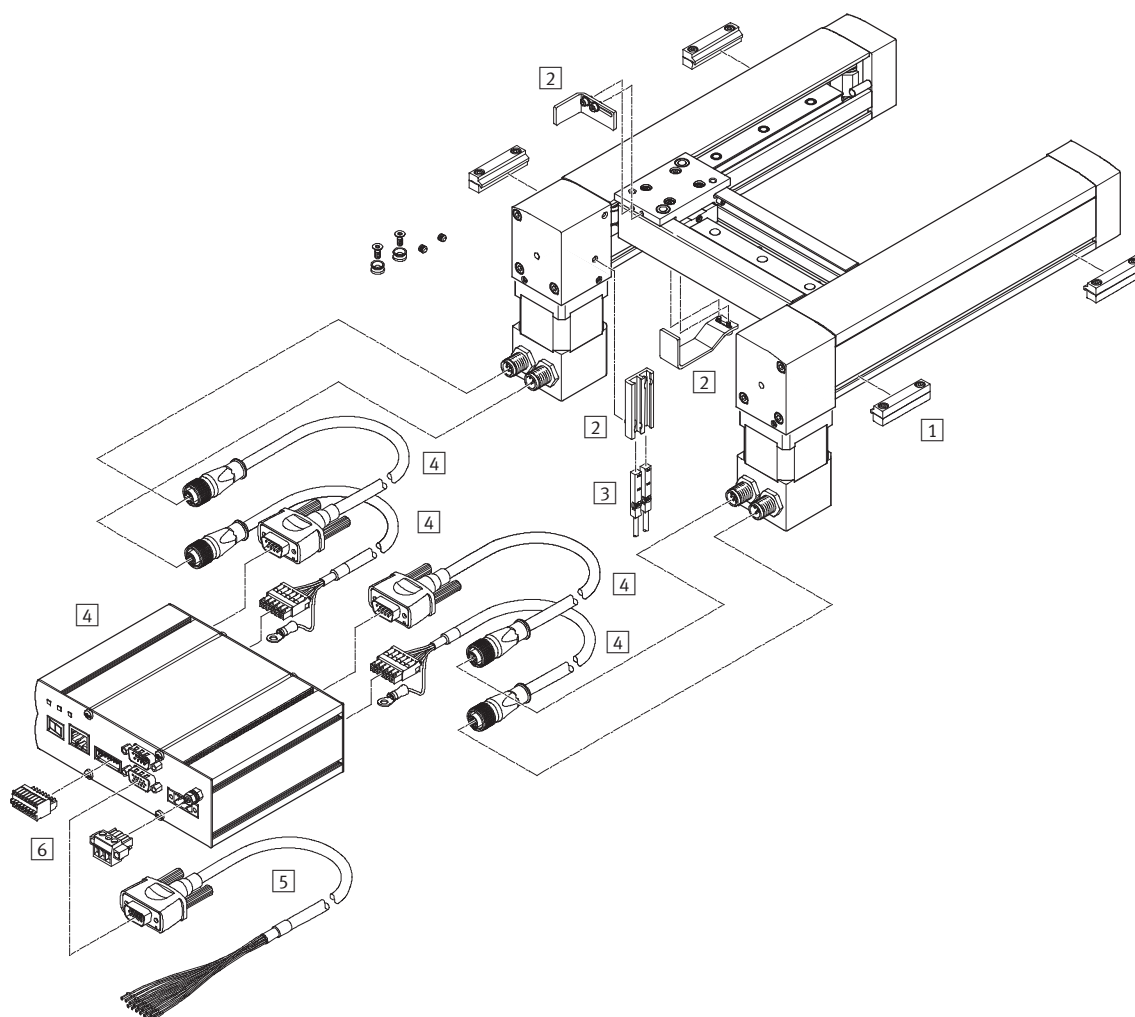
Note

Ordering data → 21

Planar surface gantries EXCM

Peripherals overview

FESTO



Attachments and accessories			
Type	Description		→ Page/Internet
	For EXCM-10	For EXCM-30	
1 Profile mounting MUE	–	Included in the scope of delivery: • X stroke < 500 mm: 2 pairs • X stroke ≥ 500 mm: 3 pairs	23
2 Sensor mounting EAPR	–	For homing in combination with third-party motors	22
3 Proximity sensor SIES-8M	–		23
4 Drive package comprising controller, motor, motor cable	Included in the scope of delivery of the planar surface gantry	Available with or without drive package	11
5 Pilot line NEBC-S1H15	For I/O interface to any controller	For I/O interface to any controller	23
6 Plug	Included in the scope of delivery of the planar surface gantry	Included in the scope of delivery of the drive package	–

Note

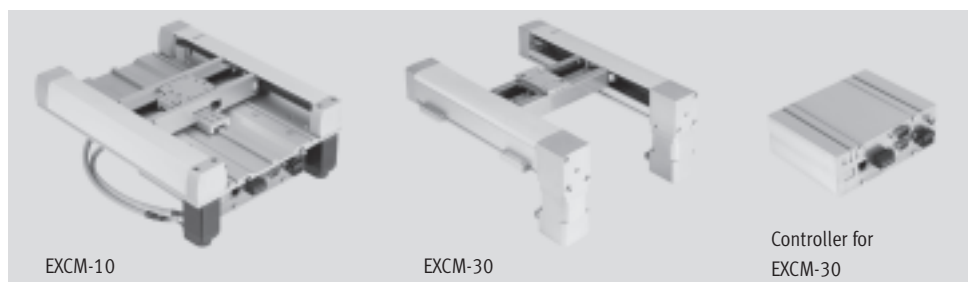
Homing is always carried out using the mechanical stop in combination with the drive package from Festo; the

sensor mounting and proximity sensor are not required in this case.

Planar surface gantries EXCM

Technical data

Size
10, 30



General technical data			
Size		10	30
Design		Planar surface gantry	
Guide		Plain-bearing guide	Recirculating ball bearing guide
Stroke of the			
X-axis	[mm]	150, 260, 300, 360, 460, 700	100, 150, 200, 300, 400, 500
		–	90 ... 700
Y-axis	[mm]	110	110, 160, 210, 260, 310, 360
Effective load at max. dyn. rsp.	[kg]	0.5	2/3 ¹⁾
Max. driving torque	[Nm]	–	0.2
Max. no-load torque	[Nm]	–	0.04 ²⁾
Max. acceleration	[m/s ²]	3	10
Max. speed	[m/s]	0.3	0.5
Repetition accuracy	[mm]	±0.1	±0.05
Mounting position		Horizontal	Any ³⁾
Type of mounting			
Planar surface gantry		Via through-hole and screw	Via profile mounting
Controller		–	Via H-rail, on connecting plate

- 1) Vertical/horizontal mounting position
2) At v=0.2 m/s and 45° diagonal travel
3) Motors with brake must be used in the case of vertical installation

Operating and environmental conditions			
Size		10	30
Characteristics of digital logic outputs		Not galvanically isolated	
Characteristics of logic inputs		Galvanically connected to logic potential	
Logic input specification		Based on IEC 61131-2	
Protection class		IP20	
Protective function		I ² t monitoring, following error monitoring, software end-position detection, voltage failure detection, current monitoring, temperature monitoring	
Ambient temperature	[°C]	+10 ... +45	
Storage temperature	[°C]	−10 ... +60	
Relative air humidity		0 ... 90 (non-condensing)	
Noise level	dB(A)	38	52
Duty cycle	[%]	100	
CE marking (see declaration of conformity)		In accordance with EU EMC Directive ¹⁾	

- 1) For information about the applicability of the component see the manufacturer's EC declaration of conformity at: www.festo.com → Support → User documentation.
If the component is subject to restrictions on usage in residential, office or commercial environments or small businesses, further measures to reduce the emitted interference may be necessary.

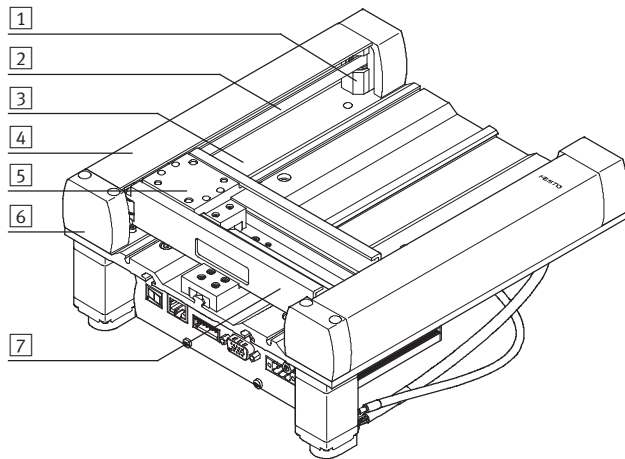
Planar surface gantries EXCM

Technical data

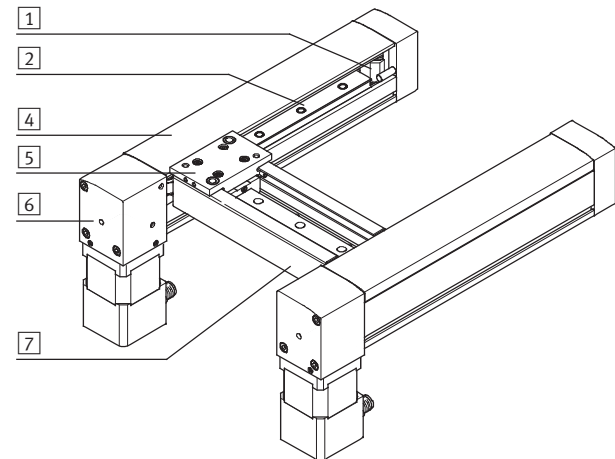
FESTO

Materials

EXCM-10



EXCM-30



Materials

Size	10	30
1 Guide pulley	Aluminium	
2 Toothed belt	Polychloroprene with glass cord	
3 Base plate	Aluminium	–
4 Cover		
X-axis	Plastic	
Y-axis	Plastic	Stainless steel
5 Slide	Aluminium	
6 End cap	Aluminium	
7 Y-traverse	Aluminium	
– Guide	Aluminium	Steel
Ball bearings	Steel	
Note on materials	RoHS-compliant	

Weight [g]

Size		10
Product weight with stroke (with motors and controller)		
X-axis	Y-axis	
150	110	3,300
260	110	3,800
300	110	4,000
360	110	4,200
460	110	4,700
700	110	5,700
Size		30
Product weight with stroke (without motors and controller)		
X-axis	Y-axis	
150	110	2,700
Additional weight per 50 mm stroke		
X-axis		237
Y-axis		132
Weight		
2 motors		900
2 motors with brake		1,500
Controller		650

Planar surface gantries EXCM

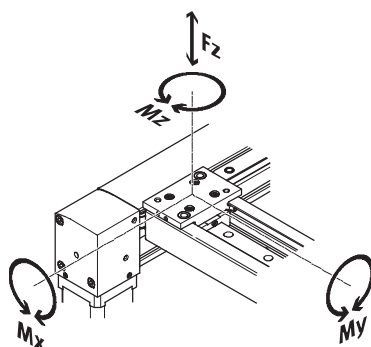
Technical data

Characteristic load values

The indicated forces and torques refer to the slide surface. The point of application of force is the point where the centre of the guide and the longitudinal centre of the slide intersect.

They are valid for $v = 0.2 \text{ m/s}$.

These values must not be exceeded during dynamic operation. Special attention must be paid to the cushioning phase.



If the axis is subjected to more than two of the indicated forces and torques simultaneously, the following equation must be satisfied in addition to the indicated maximum loads:

Calculating the load comparison factor:

$$f_v = \frac{|F_{z,dyn}|}{F_{z,max}} + \frac{|M_{x,dyn}|}{M_{x,max}} + \frac{|M_{y,dyn}|}{M_{y,max}} + \frac{|M_{z,dyn}|}{M_{z,max}} \leq 1$$

Permissible forces and torques

Size	10	30
$F_{z,max}$ [N]	5	100
$M_{x,max}$ [Nm]	2	34
$M_{y,max}$ [Nm]	0.5	67
$M_{z,max}$ [Nm]	2	34

Feed forces [N]

Size	30						
Stroke of the Y-axis [mm]	110	160	210	260	310	360	
Travel in X direction	55	55	55	50	40	34	
Travel in Y direction	55	55	46	38	32	28	
Travel 45° diagonal	35	35	35	30	25	23	

Weight of the Y-traverse [g]

Size	30						
Stroke of the Y-axis [mm]	110	160	210	260	310	360	
Y-traverse	670	800	930	1,070	1,200	1,330	

Note

The weight forces due to load when the gantry is mounted vertically must be taken into consideration in the feed force. This is done by adding the weight of the Y-traverse to the load

when the X-axis is vertical. The feed force is reduced by the value of the weight force with vertical travel upwards and increased with vertical travel downwards.

Planar surface gantries EXCM

Technical data

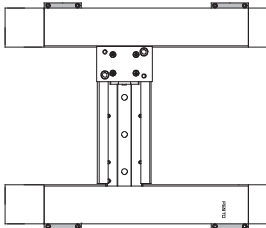
FESTO

EXCM-30 – Number of profile mountings

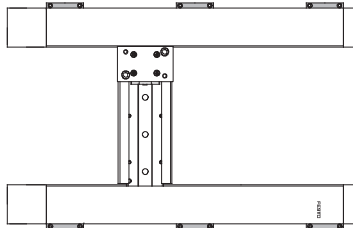
Different numbers of profile mountings must be used depending on the mounting position and stroke of the X-axis.

Horizontal mounting position

Stroke < 500 mm

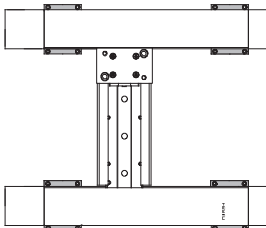


Stroke ≥ 500 mm

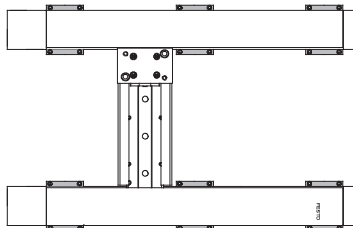


Vertical mounting position

Stroke < 500 mm



Stroke ≥ 500 mm



Stroke of the X-axis [mm]	Number of profile mountings	
	Horizontal mounting position	Vertical mounting position
100 ... 500	2 per profile, inside or outside	4 per profile, inside and outside
500 ... 700	3 per profile, inside or outside	6 per profile, inside and outside

Planar surface gantries EXCM

Technical data

Technical data – Controller		
Functional principle	Cascade controller with P position controller, PI speed controller, PI current controller; Current control, within the cascade controller PWM MOSFET power end stage	
Operating mode	Direct mode	
	Record selection	
Rotary position encoder	Optical encoder, 2,000 steps/rev.	
Display	7-segment display	
Input encoder interface	RS422	
Adjustable current reduction	Via software	
Nominal current setting	Via software	
Step adjustment	Via software	
Switching logic	NPN (negative switching)	
Braking resistor	[Ω]	15
Mains filter	Integrated	

Electrical data – Controller			
For EXCM size		10	30
Max. intermediate circuit voltage	[V DC]	28	
Nominal current per phase, effective	[A]	1.4	3
Load supply			
Nominal voltage	[V DC]	24	
Nominal current	[A]	2.8	6
Peak current	[A]	8	
Logic supply			
Nominal voltage	[V DC]	24 ±15%	
Nominal current	[A]	0.3	
Max. current of digital logic outputs	[mA]	100	

Technical data – Fieldbus interface				
Interfaces		I/O	CANopen	Ethernet
Number of digital logic outputs		5		
Number of digital logic inputs		9		
Operating range of logic inputs [V DC]		8 ... 30		
Process coupling		32 positioning records		
Communication profile		–	FHPP	TCP/IP, FHPP
Max. fieldbus transmission rate [Mbps]		–	1	100

Mechanical data – Motor			
Size		10	30
Nominal torque	[Nm]	0.009	0.04
Holding torque	[Nm]	0.009	0.04

CANopen® is a registered trademark of its respective trademark holder in certain countries.

Planar surface gantries EXCM

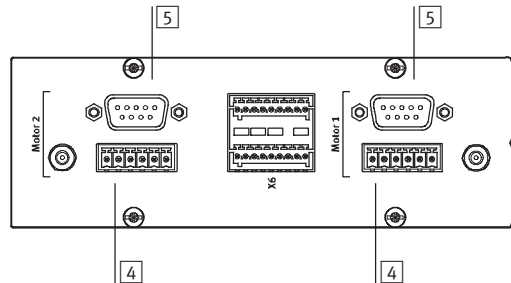
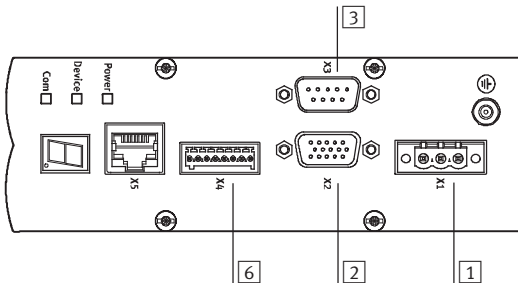
Technical data

FESTO

Pin allocation

Front plate

Reverse side



1 X1 Power supply

Pin	Function
1	+24 V logic Logic supply
2	+24 V load Load supply
3	0 V Reference potential

2 X2 I/O interface

Pin	Function
1	+24 V Ready Ready for communication
2	In 1 Positioning record bit 1
3	In 2 Positioning record bit 2
4	In 3 Positioning record bit 3
5	In 4 Positioning record bit 4
6	In 5 Positioning record bit 5
7	In 6 Not used
8	Start Start input
9	Enable Enable input
10	Reset Reset input
11	Ready Ready output
12	Fault Fault output
13	Acknowledge Acknowledge output
14	MC Motion complete
15	0 V Reference potential

Planar surface gantries EXCM

Technical data

3 X3 CAN interface

Pin	Function
1	n.c.
2	CAN_L CAN low
3	GND Reference potential
4	n.c.
5	n.c.
6	n.c.
7	CAN_H CAN high
8	n.c.
9	n.c.

4 Motor connection – supply

Pin	Function
1	A String A
2	A/ String A/
3	B String B
4	B/ String B/
5	BR+ 24 V brake connection
6	BR– 0 V brake connection

5 Motor connection – encoder

Pin	Function
1	A
2	B
3	N
4	0 V Reference potential for encoder
5	5 V Auxiliary supply for encoder
6	A/
7	B/
8	N/
9	n.c.

6 X4 Emergency stop interface

Pin	Function
1	+24 V logic Logic supply
2	TO Interrupt motor voltage (at 0 V)
3	ES Trigger braking ramp (at 0 V)
4	RB Release brake (at 24 V)
5	FAULT Fault
6	DIAG1
7	DIAG2
8	0 V Reference potential

Planar surface gantries EXCM

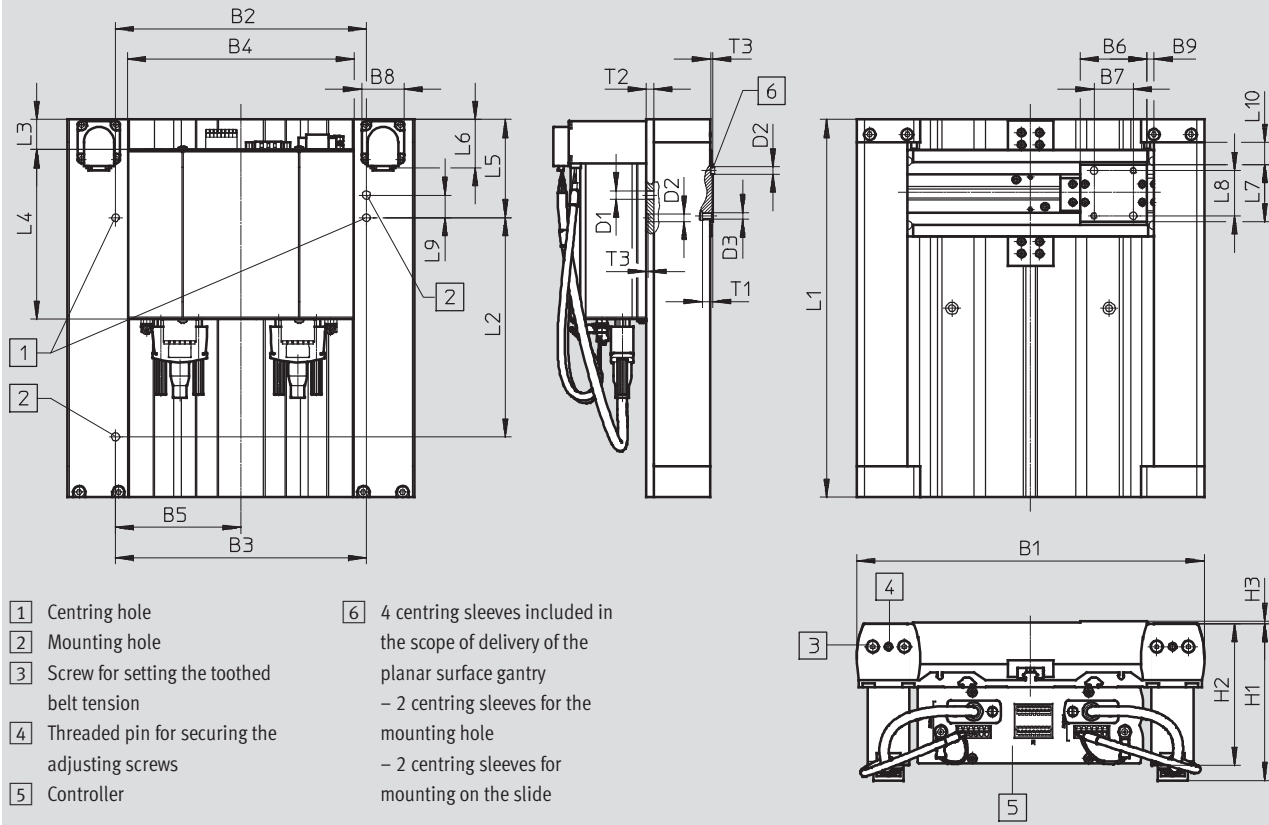
Technical data

FESTO

Dimensions

Download CAD Data → www.festo.com/us/cad

EXCM-10



Planar surface gantries EXCM

Technical data

Type	B1	B2 ±0.03	B3 ±0.2	B4	B5 ±0.2	B6	B7 ±0.03	B8
EXCM-10-...	230	166	166	149	83	44	26	28

Type	B9	D1 Ø	D2 Ø H7	D3	H1 +1.35/-1.15	H2	H3	L3	L4
EXCM-10-...	4.7	5.5	5	M4	103.7	92.2	1.6	0 ... 50	112

Type	L5 ±0.1	L6	L7	L8 ±0.03	L9 ±0.1	L10	T1	T2	T3
EXCM-10-...	65	32	38	30	15	14.8	6.7	5	12

Stroke-dependent dimensions

Type	L1 +0.4	L2 ±0.2
EXCM-10-150-110-...	250	145
EXCM-10-260-110-...	360	255
EXCM-10-300-110-...	400	295
EXCM-10-360-110-...	460	355
EXCM-10-460-110-...	560	455
EXCM-10-700-110-...	800	695

Planar surface gantries EXCM

Technical data

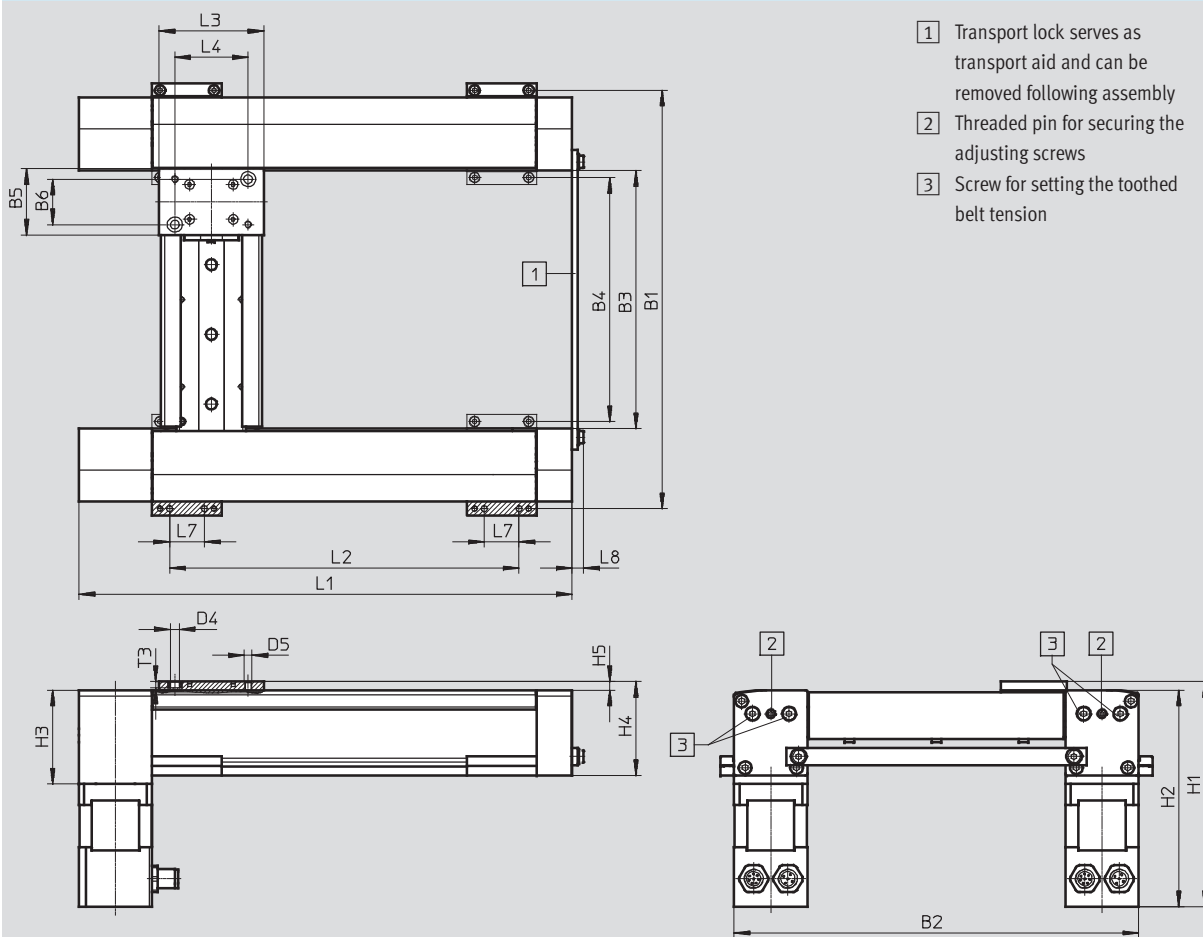
FESTO

Dimensions

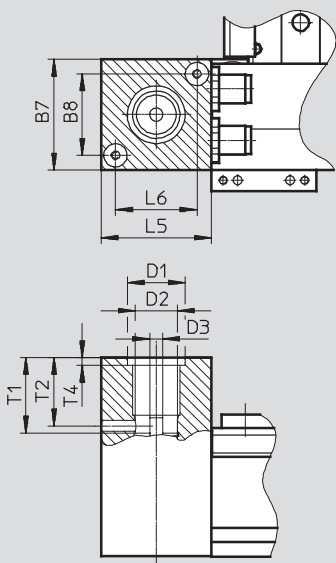
Download CAD Data → www.festo.com/us/cad

EXCM-30

Motor attachment position – Underneath



Motor interface



Planar surface gantries EXCM

Technical data

FESTO

Type	B5	B6 ±0.03	B7	B8 ±0.1	D1 ∅ H7	D2 ∅	D3 ∅ f8	D4 ∅ H8	D5
EXCM-30-...	38	26	42	31	22	16	5	5	M4

Type	H1		H2		H3	H4	H5	L3
	EXCM-...-ST	EXCM-...-SB	EXCM-...-ST ±0.7	EXCM-...-SB				
EXCM-30-...	129.2	186.2	124.2	181.2	53.8	54	5	60

Type	L4 ±0.03	L5	L6 ±0.1	L7	L8	T1	T2	T3	T4
EXCM-30-...	42	42	31	20	6.6	28.7	26	3.7	3

Stroke-dependent dimensions

Stroke of the X-axis	L1	L2 ±0.2	Stroke of the Y-axis	B1	B2	B3	B4
100	233	150.5	110	240	232	148	140
150	283	200.5	160	290	282	198	190
200	333	250.5	210	340	332	248	240
300	433	350.5	260	390	382	298	290
400	533	450.5	310	440	432	348	340
500	633	550.5	360	490	482	398	390
90 ... 700	133 + stroke	50.5 + stroke					

Planar surface gantries EXCM

Technical data

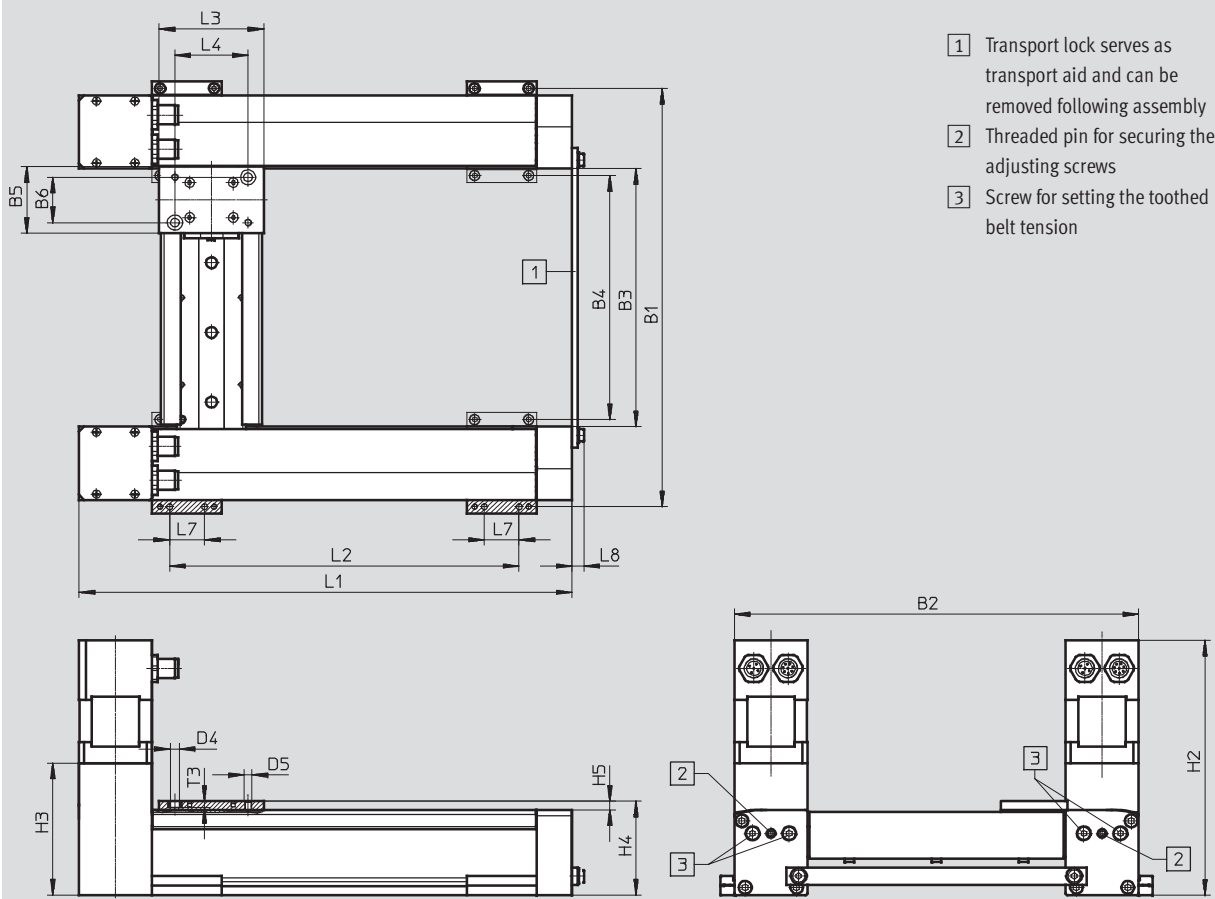
FESTO

Dimensions

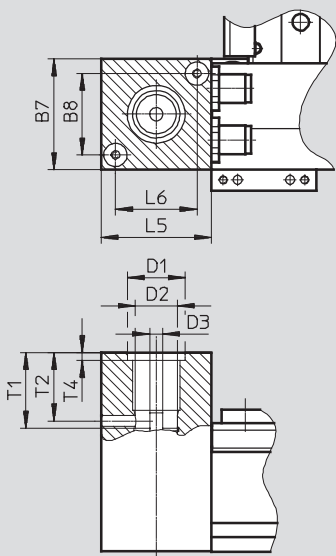
Download CAD Data → www.festo.com/us/cad

EXCM-30

Motor attachment position – On top



Motor interface



Planar surface gantries EXCM

FESTO

Technical data

Type	B5	B6 ±0.03	B7	B8 ±0.1	D1 Ø H7	D2 Ø	D3 Ø f8	D4 Ø H8
EXCM-30-...	38	26	42	31	22	16	5	5

Type	D5	H2		H3	H4	H5	L3	L4 ±0.03
		EXCM-...-ST ±1	EXCM-...-SB					
EXCM-30-...	M4	146.2	203.2	75.6	54	5	60	42

Type	L5	L6 ±0.1	L7	L8	T1	T2	T3	T4
EXCM-30-...	42	31	20	6.6	28.7	26	3.7	3

Stroke-dependent dimensions

Stroke of the X-axis	L1	L2 ±0.2	Stroke of the Y-axis	B1	B2	B3	B4
100	233	150.5	110	240	232	148	140
150	283	200.5	160	290	282	198	190
200	333	250.5	210	340	332	248	240
300	433	350.5	260	390	382	298	290
400	533	450.5	310	440	432	348	340
500	633	550.5	360	490	482	398	390
90 ... 700	133 + stroke	50.5 + stroke					

Planar surface gantries EXCM

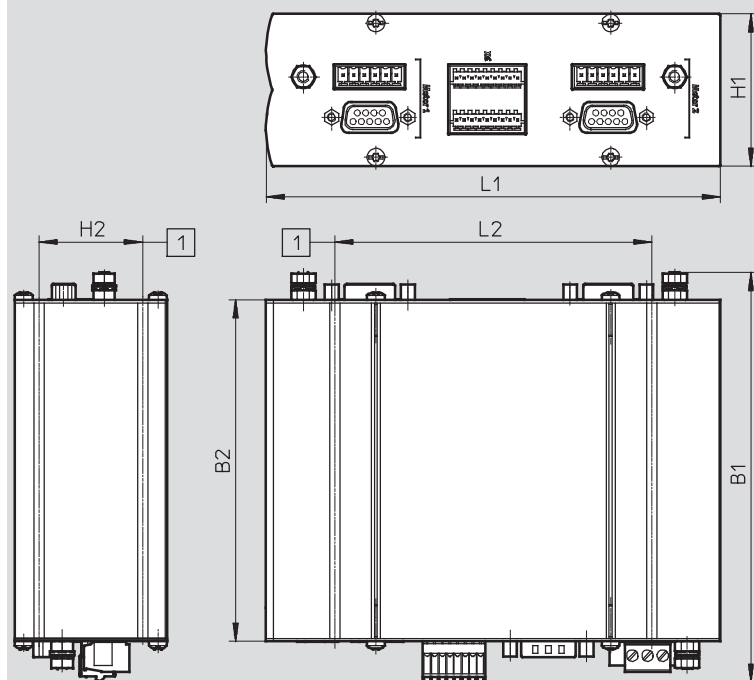
Technical data

FESTO

Dimensions

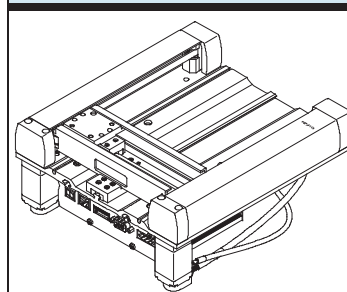
Download CAD Data → www.festo.com/us/cad

Controller



B1	B2	H1	H2	L1	L2
134.4	112	50	32	149	104

Ordering data

EXCM-10	Stroke (X-axis) [mm]	Part No.	Type
	150	1801920	EXCM-10-150-110-GF-ST-B-E1
	260	1801915	EXCM-10-260-110-GF-ST-B-E1
	300	1801917	EXCM-10-300-110-GF-ST-B-E1
	360	1801918	EXCM-10-360-110-GF-ST-B-E1
	460	1801916	EXCM-10-460-110-GF-ST-B-E1
	700	1801919	EXCM-10-700-110-GF-ST-B-E1

Planar surface gantries EXCM

Ordering data – Modular products

Ordering table					
Size	30	Condition s	Code		Enter code
[M] Module No.	2226101				
Product type	EXCM series M		EXCM		EXCM
Size	30		-30		30
Stroke of the X-axis	[mm] 100		-100		
	[mm] 150		-150		
	[mm] 200		-200		
	[mm] 300		-300		
	[mm] 400		-400		
	[mm] 500		-500		
	[mm] 90 ... 700		-...		
Stroke of the Y-axis	[mm] 110		-110		
	[mm] 160		-160		
	[mm] 210		-210		
	[mm] 260		-260		
	[mm] 310		-310		
	[mm] 360		-360		
Guide	Recirculating ball bearing guide		-KF		KF
Motor type	Stepper motors		-ST		
	Stepper motors with brake		-SB		
	Without stepper motors	[1]	-W		
Motor attachment position	Underneath	[2]	-B		
	Underneath, cable outlets to front		-B1		
	Underneath, cable outlets to rear		-B2		
	Underneath, cable outlets inside		-B3		
	Underneath, cable outlets outside		-B4		
	On top	[2]	-T		
	On top, cable outlets to front		-T1		
	On top, cable outlets to rear		-T2		
	On top, cable outlets inside		-T3		
	On top, cable outlets outside		-T4		
Controller	Without controller		-		
	With controller, motor and encoder cable (0.5 m)		-E2		
	With controller, motor and encoder cable (1 m)		-E3		
	With controller, motor and encoder cable (1.5 m)		-E4		
	With controller, motor and encoder cable (2 m)		-E5		
Language of documentation	German		-DE		
	English		-EN		
	Spanish		-ES		
	French		-FR		
	Italian		-IT		
	Russian		-RU		
	Swedish		-SV		
	Chinese		-ZH		

- [1] w** The controller E2, E3, E4, E5 is omitted in combination with "Without stepper motors" W
[2] B, T Not in combination with stepper motors ST and SB. Option if third-party motors are mounted

Transfer order code

EXCM - **30** - - - **KF** - - - -

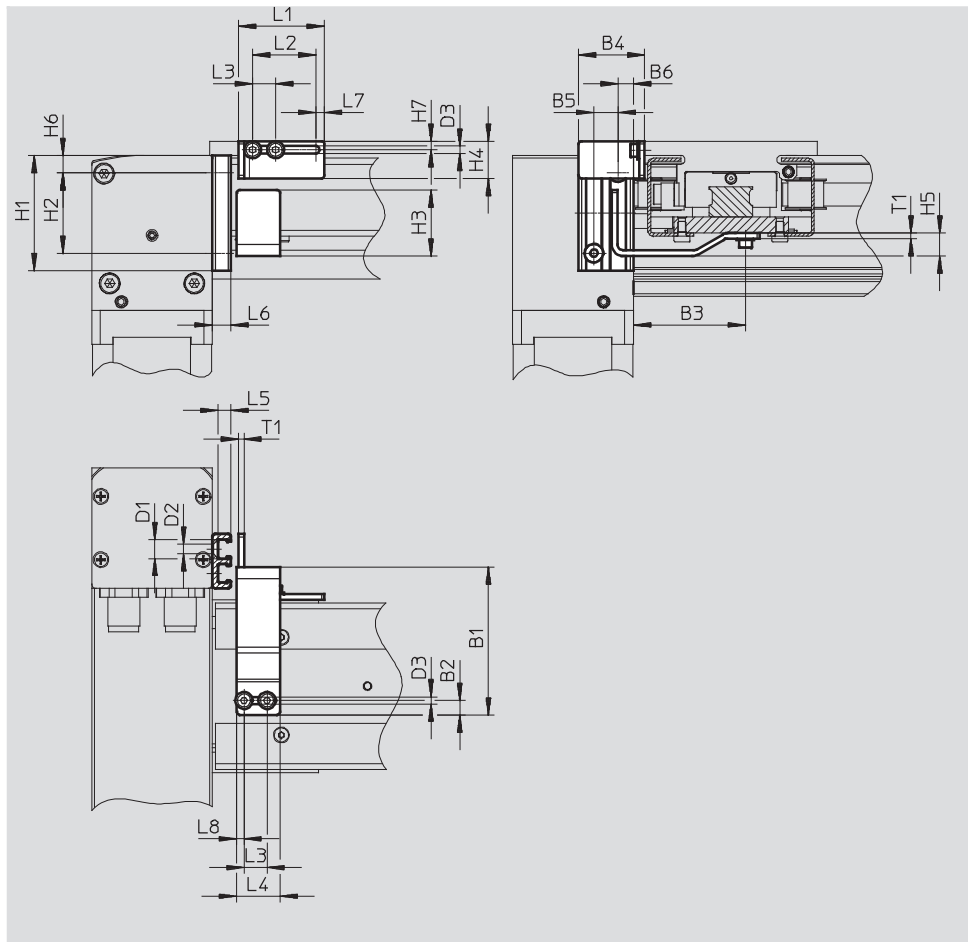
Planar surface gantries EXCM

Accessories

FESTO

Sensor mounting EAPR
(incl. switch lug)

Materials:
Bracket: Wrought aluminium alloy
Switch lug: Steel
RoHS-compliant



Dimensions and ordering data										
For size	B1	B2	B3	B4	B5	B6	D1 Ø	D2 Ø	D3 Ø	H1
30	51.5	5	39	23	8.4	5.3	6.5	3.4	2.6	40

For size	H2	H3	H4	H5	H6	H7	L1	L2	L3	L4
30	28	23	13	8	6	3	30	22	8	15

For size	L5	L6	L7	L8	T1	Weight [g]	Part No.	Type
30	4.5	6.5	3	2.5	2	330	2319236	EAPR-E11-30

Planar surface gantries EXCM

Accessories

Profile mounting MUE

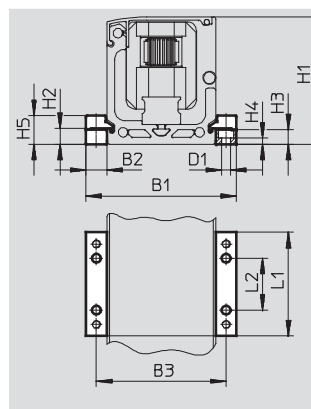
Material:

Anodised aluminium

RoHS-compliant

Scope of delivery:

1 pair

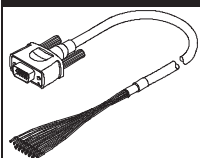


Dimensions and ordering data

For size	B1	B2	B3	D1 Ø	H1	H2	H3
30	58	8	50	3.4	49	6	5.5

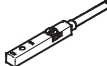
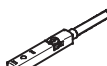
For size	H4	H5	L1	L2	Weight [g]	Part No.	Type
30	2.3	11	40	20	20	558042	MUE-50

Ordering data – Cables

	Brief description	Cable length [m]	Part No.	Type
	Pilot line, for I/O interface to any controller	1	2307459	NEBC-S1H15-E-1.0-N-LE15
		2.5	2052917	NEBC-S1H15-E-2.5-N-LE15
		5	2052918	NEBC-S1H15-E-5.0-N-LE15
		10	2052919	NEBC-S1H15-E-10.0-N-LE15

Ordering data – Proximity sensor for T-slot, inductive

Technical data → Internet: sies

	Type of mounting	Electrical connection	Switching output	Cable length [m]	Part No.	Type
N/O contact						
	Insertable in the slot from above, flush with the cylinder profile	Cable, 3-wire	PNP	7.5	551386	SIES-8M-PS-24V-K-7,5-OE
		Plug M8x1, 3-pin		0.3	551387	SIES-8M-PS-24V-K-0,3-M8D
		Cable, 3-wire	NPN	7.5	551396	SIES-8M-NS-24V-K-7,5-OE
		Plug M8x1, 3-pin		0.3	551397	SIES-8M-NS-24V-K-0,3-M8D
N/C contact						
	Insertable in the slot from above, flush with the cylinder profile	Cable, 3-wire	PNP	7.5	551391	SIES-8M-PO-24V-K-7,5-OE
		Plug M8x1, 3-pin		0.3	551392	SIES-8M-PO-24V-K-0,3-M8D
		Cable, 3-wire	NPN	7.5	551401	SIES-8M-NO-24V-K-7,5-OE
		Plug M8x1, 3-pin		0.3	551402	SIES-8M-NO-24V-K-0,3-M8D

Product Range and Company Overview

A Complete Suite of Automation Services

Our experienced engineers provide complete support at every stage of your development process, including: conceptualization, analysis, engineering, design, assembly, documentation, validation, and production.



Custom Automation Components
Complete custom engineered solutions



Custom Control Cabinets
Comprehensive engineering support and on-site services



Complete Systems
Shipment, stocking and storage services

The Broadest Range of Automation Components

With a comprehensive line of more than 30,000 automation components, Festo is capable of solving the most complex automation requirements.



Electromechanical
Electromechanical actuators, motors, controllers & drives



Pneumatics
Pneumatic linear and rotary actuators, valves, and air supply



PLCs and I/O Devices
PLC's, operator interfaces, sensors and I/O devices

Supporting Advanced Automation... As No One Else Can!

Festo is a leading global manufacturer of pneumatic and electromechanical systems, components and controls for industrial automation, with more than 12,000 employees in 56 national headquarters serving more than 180 countries. For more than 80 years, Festo has continuously elevated the state of manufacturing with innovations and optimized motion control solutions that deliver higher performing, more profitable automated manufacturing and processing equipment. Our dedication to the advancement of automation extends beyond technology to the education and development of current and future automation and robotics designers with simulation tools, teaching programs, and on-site services.

Quality Assurance, ISO 9001 and ISO 14001 Certifications

Festo Corporation is committed to supply all Festo products and services that will meet or exceed our customers' requirements in product quality, delivery, customer service and satisfaction.

To meet this commitment, we strive to ensure a consistent, integrated, and systematic approach to management that will meet or exceed the requirements of the ISO 9001 standard for Quality Management and the ISO 14001 standard for Environmental Management.



© Copyright 2008, Festo Corporation. While every effort is made to ensure that all dimensions and specifications are correct, Festo cannot guarantee that publications are completely free of any error, in particular typing or printing errors. Accordingly, Festo cannot be held responsible for the same. For Liability and Warranty conditions, refer to our "Terms and Conditions of Sale", available from your local Festo office. All rights reserved. No part of this publication may be reproduced, distributed, or transmitted in any form or by any means, electronic, mechanical, photocopying or otherwise, without the prior written permission of Festo. All technical data subject to change according to technical update.



Printed on recycled paper at New Horizon Graphic, Inc., FSC certified as an environmentally friendly printing plant.

Festo North America

Festo Regional Contact Center

5300 Explorer Drive
Mississauga, Ontario L4W 5G4
Canada

USA Customers:

For ordering assistance,

Call: 1.800.99.FESTO (1.800.993.3786)

Fax: 1.800.96.FESTO (1.800.963.3786)

Email: customer.service@us.festo.com

For technical support,

Call: 1.866.GO.FESTO (1.866.463.3786)

Fax: 1.800.96.FESTO (1.800.963.3786)

Email: product.support@us.festo.com

Canadian Customers:

Call: 1.877.GO.FESTO (1.877.463.3786)

Fax: 1.877.FX.FESTO (1.877.393.3786)

Email: festo.canada@ca.festo.com

USA Headquarters

Festo Corporation
395 Moreland Road
P.O. Box 18023
Hauppauge, NY 11788, USA
www.festo.com/us

USA Sales Offices

Appleton

North 922 Tower View Drive, Suite N
Greenville, WI 54942, USA

Boston

120 Presidential Way, Suite 330
Woburn, MA 01801, USA

Chicago

1441 East Business Center Drive
Mt. Prospect, IL 60056, USA

Dallas

1825 Lakeway Drive, Suite 600
Lewisville, TX 75057, USA

Detroit – Automotive Engineering Center

2601 Cambridge Court, Suite 320
Auburn Hills, MI 48326, USA

New York

395 Moreland Road
Hauppauge, NY 11788, USA

Silicon Valley

4935 Southfront Road, Suite F
Livermore, CA 94550, USA

United States



USA Headquarters, East: Festo Corp., 395 Moreland Road, Hauppauge, NY 11788

Phone: 1.631.435.0800; Fax: 1.631.435.8026;

Email: info@festo-usa.com

www.festo.com/us

Canada



Headquarters: Festo Inc., 5300 Explorer Drive, Mississauga, Ontario L4W 5G4

Phone: 1.905.624.9000; Fax: 1.905.624.9001;

Email: festo.canada@ca.festo.com

www.festo.ca

Mexico



Headquarters: Festo Pneumatic, S.A., Av. Ceylán 3, Col. Tequesquahuac,
54020 Tlalneapantla, Edo. de México

Phone: 011 52 [55] 53 21 66 00; Fax: 011 52 [55] 53 21 66 65;

Email: festo.mexico@mx.festo.com

www.festo.com/mx

Central USA

Festo Corporation
1441 East Business
Center Drive
Mt. Prospect, IL 60056, USA
Phone: 1.847.759.2600
Fax: 1.847.768.9480



Western USA

Festo Corporation
4935 Southfront Road,
Suite F
Livermore, CA 94550, USA
Phone: 1.925.371.1099
Fax: 1.925.245.1286



Festo Worldwide

Argentina Australia Austria Belarus Belgium Brazil Bulgaria Canada Chile China Colombia Croatia Czech Republic Denmark
Estonia Finland France Germany Great Britain Greece Hong Kong Hungary India Indonesia Iran Ireland Israel Italy Japan Latvia
Lithuania Malaysia Mexico Netherlands New Zealand Norway Peru Philippines Poland Romania Russia Serbia Singapore
Slovakia Slovenia South Africa South Korea Spain Sweden Switzerland Taiwan Thailand Turkey Ukraine United States Venezuela

www.festo.com