



- Electrically or pneumatically actuated valves
- With internal or external pilot air
- Sturdy and reliable

Specified types in accordance with ATEX directive for potentially explosive atmospheres

➔ www.festo.com/en/ex

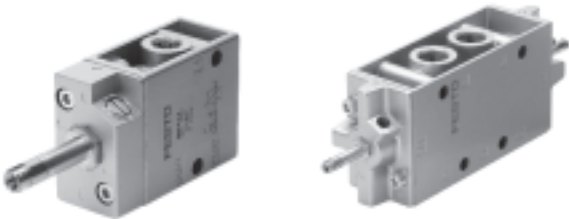
Solenoid/pneumatic valves, Tiger Classic



Key features

General information

- Highly durable poppet valve concept for all 3/2 and 5/2-way valves
- Pneumatic or electrical actuation with F solenoid coil
- With flow rates of up to 7,500 l/min
- Pipe thread in sizes G1/8, G1/4, G1/2 and G3/4
- Tried and tested assembly on PAL or PRS manifold strips with hollow bolts
- Optimised response times with patented U-ring and servo control



Solenoid coils

F solenoid coils

- | | | | |
|--|---|---|--|
| Voltage: <ul style="list-style-type: none"> • 12 to 230 V DC • 12 to 240 V AC (50 to 60 Hz) | Power consumption: <ul style="list-style-type: none"> • 4.5 W | <ul style="list-style-type: none"> • Selected types acc. to ATEX directive for explosive atmospheres | <ul style="list-style-type: none"> • Easily interchangeable solenoid coils • Solenoid coil not included in scope of delivery |
|--|---|---|--|

Variants

VL/O-3-...	MFH-3-..., MOFH-3-...	MFH-3-...-S
------------	-----------------------	-------------

- | | | | |
|--|---|--|--|
| Depending upon selected connections:
Normally closed or normally open | <ul style="list-style-type: none"> • MFH-3-...
Normally closed • MOFH-3-...
Normally open | These valves can be converted from one function to the other by rotating the seal under the cover. | This valve type can be used within a range of 0 to 8 bar and also as MOFH (through flow when not actuated) with a separate pilot line. |
|--|---|--|--|

MFH-5-...-S

The external pilot air connection means that these valves can also be used with low operating pressures.

Solenoid/pneumatic valves, Tiger Classic

Key features

FESTO

Manifold mounting

With PAL manifold strip



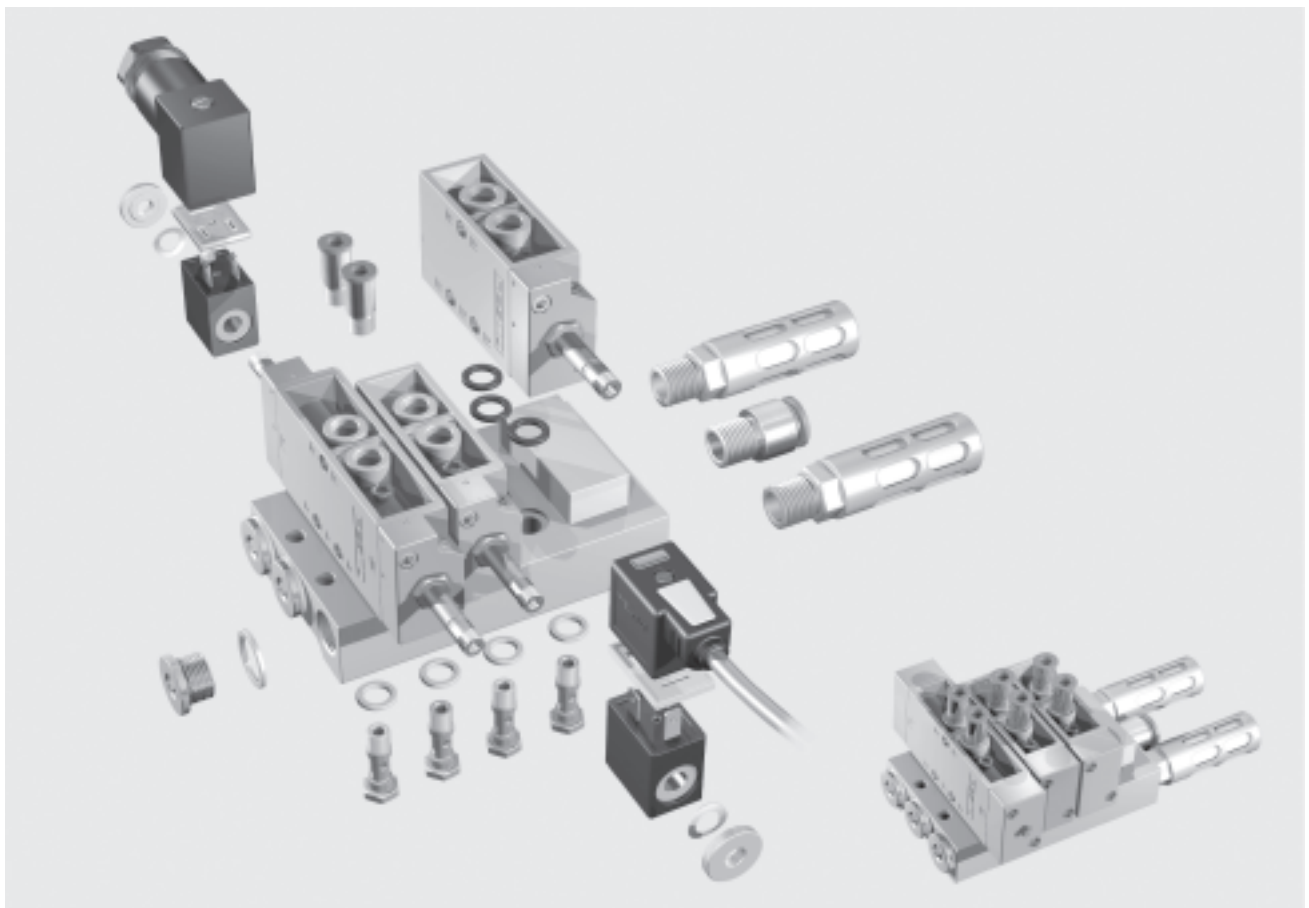
With PRS manifold block



The Tiger Classic valves can be mounted on PAL manifold strips with common supply port or on PRS manifold blocks with common supply port and common exhausts. The valves are mounted on the strips and blocks with hollow bolts. The manifold strip and manifold block have 2 to 6 valve positions.

Vacant positions can be sealed on PAL manifold strips with blanking caps, or with blanking plates on PRS manifold blocks.

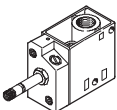
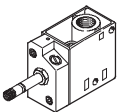
Separate pressure levels can be provided to individual valves by means of hollow bolts with threaded connection.

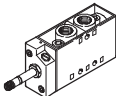
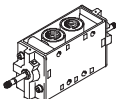
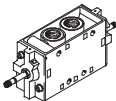


Solenoid valves, Tiger Classic

Product range overview

FESTO

Function	Design	Type	Pneumatic connection	Operating voltage	
				[V DC]	[V AC]
3/2-way valves	Solenoid valve				
		MFH	G1/8	12, 24, 42, 48	24, 42, 48, 110, 230, 240
			G1/4		
			G1/2		
			G3/4		
		MOFH	G1/8	12, 24, 42, 48	24, 42, 48, 110, 230, 240
			G1/4		
			G1/2		
			G3/4		

Function	Design	Type	Pneumatic connection	Operating voltage	
				[V DC]	[V AC]
5/2-way valves	Solenoid valve				
		MFH	G1/8	12, 24, 42, 48	24, 42, 48, 110, 230, 240
			G1/4		
			G1/2		
	Double solenoid valve				
		JMFH	G1/8	12, 24, 42, 48	24, 42, 48, 110, 230, 240
			G1/4		
			G1/2		
	Double solenoid valve with dominant signal				
		JMFDH	G1/8	12, 24, 42, 48	24, 42, 48, 110, 230, 240
			G1/4		

Solenoid valves, Tiger Classic

Product range overview

FESTO

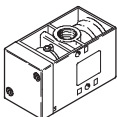
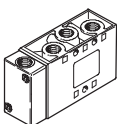
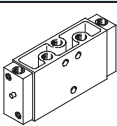
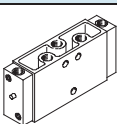
Type	Normal position		Pilot air supply		Type of reset		➔ Page/Internet
	Closed	Open	Internal	External	Air spring	Mechanical spring	
Solenoid valve							
MFH	■	–	■	■	–	■	12
	■	–	■	■	–	■	
	■	–	■	■	–	■	
	■	–	■	■	–	■	
MOFH	–	■	■	–	–	■	12
	–	■	■	–	–	■	
	–	■	■	–	–	■	
	–	■	■	–	–	■	

Type	Pilot air supply		Type of reset		➔ Page/Internet
	Internal	External	Air spring	Mechanical spring	
Solenoid valve					
MFH	■	■	–	■	17
	■	■	–	■	
	■	■	–	■	
Double solenoid valve					
JMFH	■	■	–	–	22
	■	■	–	–	
	■	■	–	–	
Double solenoid valve with dominant signal					
JMFDH	–	■	–	–	22
	–	■	–	–	

Pneumatic valves, Tiger Classic

Product range overview

FESTO

Function	Design	Type	Pneumatic connection	Type of reset		→ Page/Internet
				Air spring	Mechanical spring	
3/2-way valves	Pneumatic valve					
		VL/O	G1/8	–	■	29
			G1/4	–	■	
			G1/2	–	■	
			G3/4	–	■	
5/2-way valves	Pneumatic valve					
		VL	G1/8	–	■	33
			G1/4	–	■	
			G1/2	–	■	
	Double pilot valve					
		JH	G1/8	–	–	36
			G1/4	–	–	
			G1/2	–	–	
	Double pilot valve with dominant signal					
		JDH	G1/8	–	–	36
			G1/4	–	–	

Solenoid valves, Tiger Classic

Type codes

FESTO

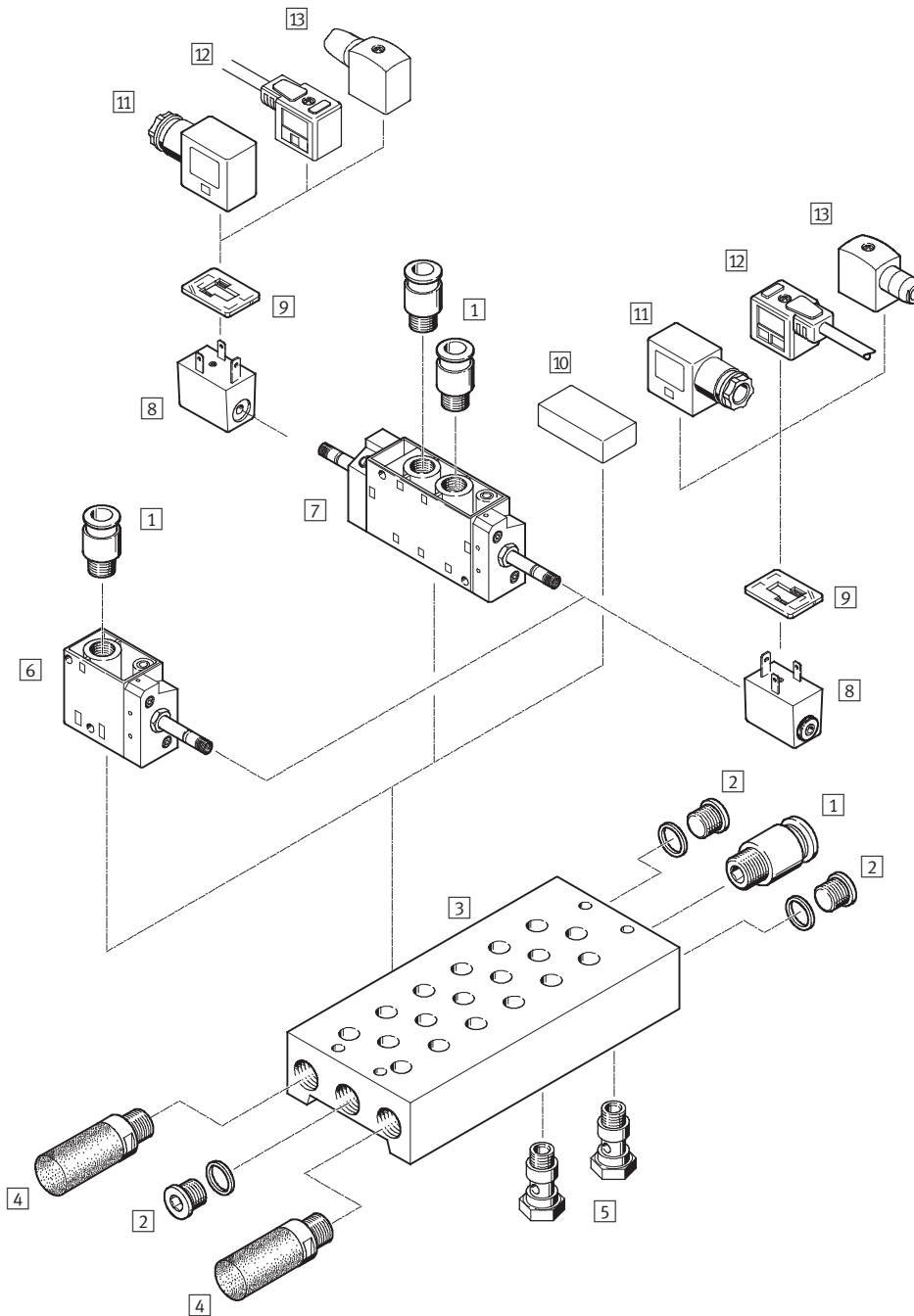
		MFH	—	5	—	1/8	—	
Type								
MFH	Single solenoid, for F solenoid coil, normally closed							
MOFH	Single solenoid, for F solenoid coil, normally open							
JMFH	Double solenoid, for F solenoid coil							
JMFDH	Double solenoid, for F solenoid coil, with dominant signal							
Valve function								
3	3/2-way valve							
5	5/2-way valve							
Pneumatic connection								
1/8	G1/8							
1/4	G1/4							
1/2	G1/2							
3/4	G3/4							
Pilot air supply								
	Internal							
S	External							

Solenoid valves, Tiger Classic

Peripherals overview

FESTO

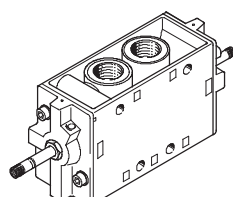
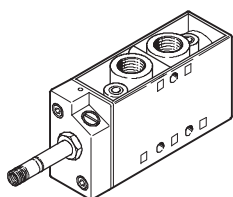
Mounting on manifold block



Variants

MFH-5-...

JMFH-5-...



Solenoid valves, Tiger Classic

Peripherals overview



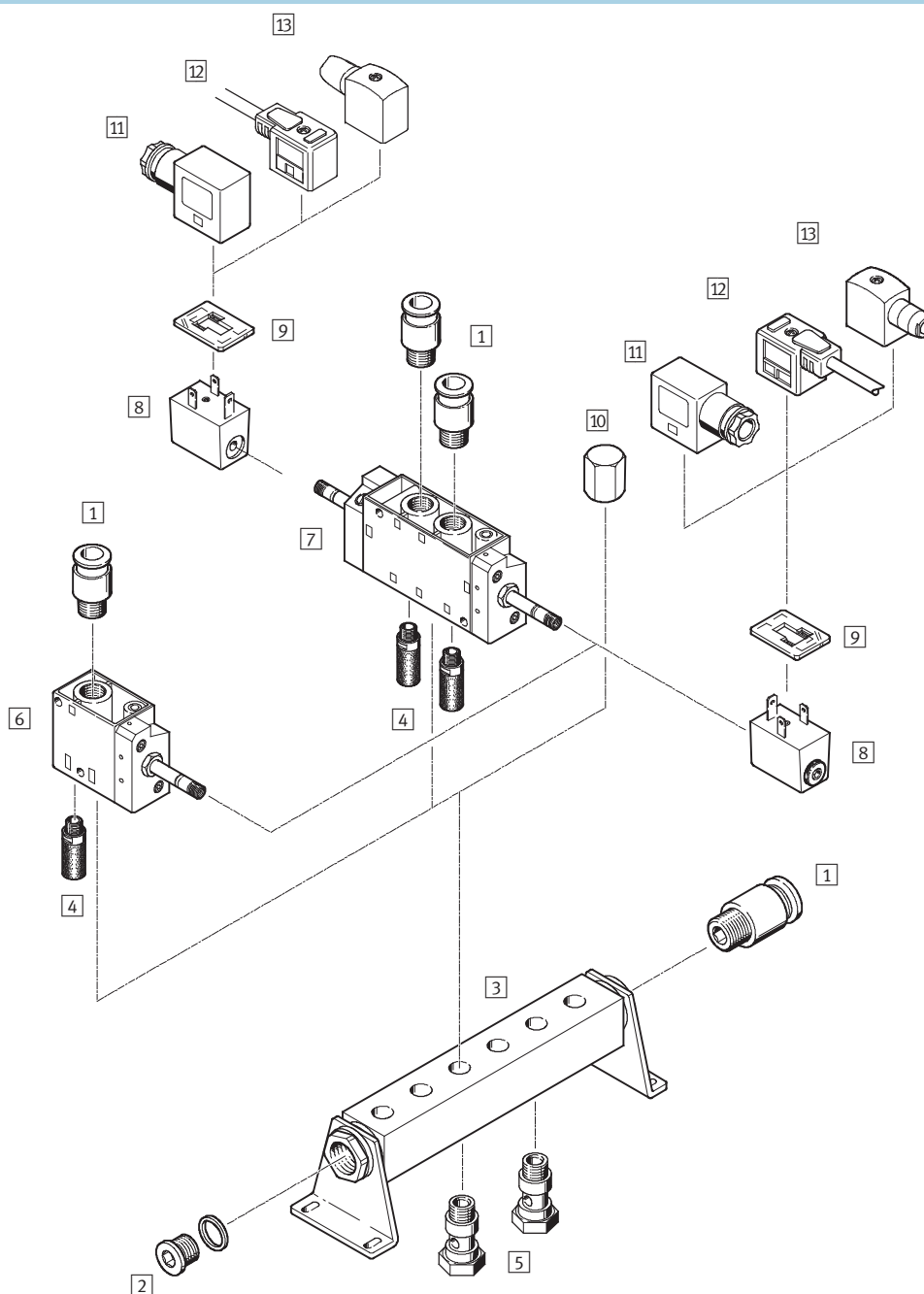
Accessories		
	Brief description	➔ Page/Internet
1 Push-in fitting QS	For connecting standard O.D. tubing	quick star
2 Blanking plug G	3 included in the scope of delivery for PRS manifold block	g
3 Manifold block PRS		42
4 Silencer	For fitting in exhaust ports	u
5 Hollow bolt VT	For distribution of compressed air or for separate compressed air supply	41
6 Solenoid valve MFH	For F solenoid coil	4
7 Double solenoid valve JMFH	For F solenoid coil	4
8 F solenoid coil MSFG, MSFW		msfg, msfw
9 Luminescent seal M...-LD	For displaying the switching status	44
10 Blanking plate PRSB	For covering an unused valve position	43
11 Plug socket MSSD-F	For valves MFH, JMFH	44
12 Plug socket with cable KMF	For valves MFH, JMFH	44
13 Plug socket MSSD-F-S	For valves MFH, JMFH	44

Solenoid valves, Tiger Classic

Peripherals overview

FESTO

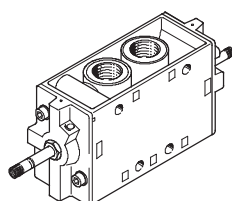
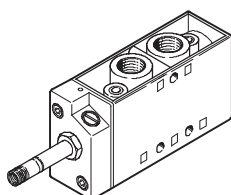
Mounting on manifold strip



Variants

MFH-5-...

JMFH-5-...



Solenoid valves, Tiger Classic

Peripherals overview

FESTO

Accessories		
	Brief description	➔ Page/Internet
1 Push-in fitting QS	For connecting standard O.D. tubing	quick star
2 Blanking plug G	1 included in the scope of delivery for PAL manifold strip	g
3 Manifold strip PAL		40
4 Silencer	For fitting in exhaust ports	u
5 Hollow bolt VT	For distribution of compressed air or for separate compressed air supply	41
6 Solenoid valve MFH	For F solenoid coil	4
7 Double solenoid valve JMFH	For F solenoid coil	4
8 F solenoid coil MSFG, MSFW		msfg, msfw
9 Luminescent seal M...-LD	For displaying the switching status	44
10 Blanking cap VTM	For blanking an unused valve position	41
11 Plug socket MSSD-F	For valves MFH, JMFH	44
12 Plug socket with cable KMF	For valves MFH, JMFH	44
13 Plug socket MSSD-F-S	For valves MFH, JMFH	44

Solenoid valves MFH, Tiger Classic

Technical data – 3/2-way valves

FESTO

Flow rate

500 ... 7,500 l/min

Voltage

12, 24, 42, 48 V DC
24, 42, 48, 110, 230,
240 V AC

Wearing parts kits

➔ 16



General technical data					
Pneumatic connection		G1/8	G1/4	G1/2	G3/4
Valve function		3/2-way, single solenoid			
Constructional design		Poppet valve			
Sealing principle		Soft			
Actuation type		Electrical			
Type of reset		Mechanical spring			
Type of control		Piloted			
Pilot air supply		Internal or external			
Direction of flow		Non reversible			
Exhaust function		With flow control			
Manual override		Detenting			
Type of mounting		Via through holes			
Mounting position		Any			
Nominal size	[mm]	5	7	14	19
Standard nominal flow rate	[l/min]	500	800	3,700	7,500
Product weight	[g]	240	320	1,100	1,260

Operating and environmental conditions						
Pneumatic connection			G1/8	G1/4	G1/2	G3/4
Operating medium			Compressed air in accordance with ISO 8573-1:2010 [7:4:4]			
Note on operating/pilot medium			Operation with lubricated medium possible (in which case lubricated operation will always be required)			
Operating pressure	Internal pilot air supply	[bar]	1.5 ... 8	1.5 ... 8	1.5 ... 8	2 ... 8
	External pilot air supply	[bar]	−0.95 ... +10	−0.95 ... +10	−0.95 ... +10	−0.95 ... +10
Pilot pressure		[bar]	1 ... 8	1 ... 8	1 ... 8	1 ... 8
Ambient temperature		[°C]	−5 ... +40			
Temperature of medium		[°C]	−10 ... +60			
Note on materials			RoHS-compliant			

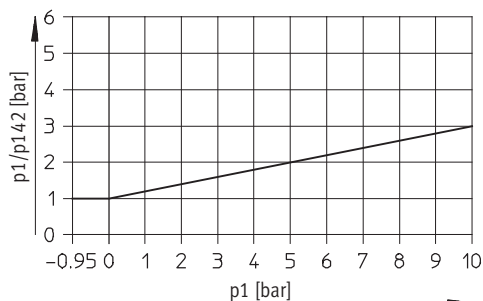
Solenoid valves MFH, Tiger Classic

FESTO

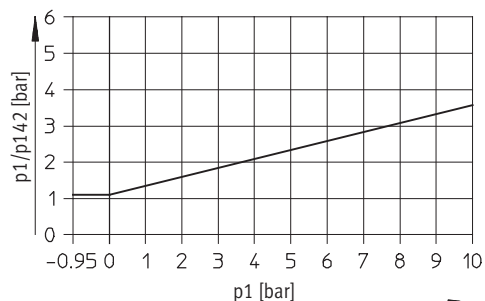
Technical data – 3/2-way valves

Minimal pilot pressure p_{12}/p_{14} as a function of operating pressure p_1 (external pilot air supply)

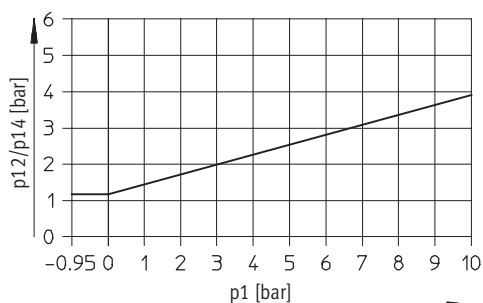
MFH-3-1/8-S



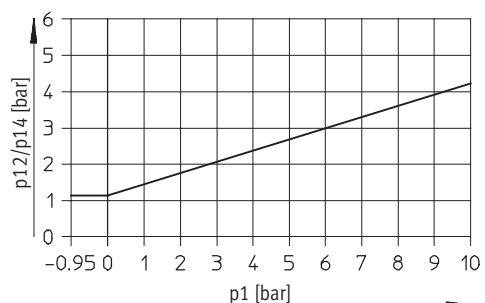
MFH-3-1/4-S



MFH-3-1/2-S



MFH-3-3/4-S



Valve response times [ms]

Pneumatic connection	G1/8		G1/4		G1/2		G3/4	
Normal position	Closed	Open	Closed	Open	Closed	Open	Closed	Open
Internal pilot air supply								
On	9	9	10	15	18	18	40	40
Off	29	29	29	45	90	90	29	29
External pilot air supply								
On	9	–	10	–	18	–	40	–
Off	29	–	29	–	90	–	29	–

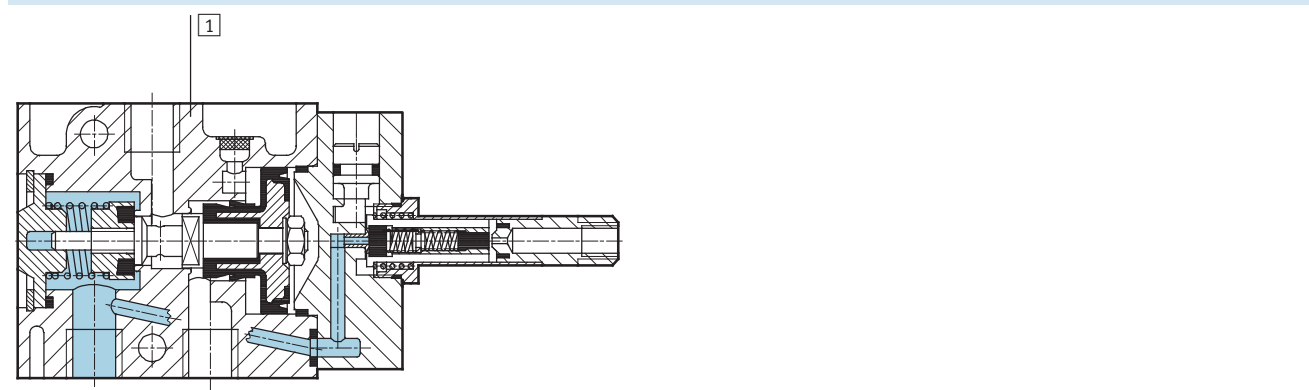
Solenoid valves MFH, Tiger Classic

FESTO

Technical data – 3/2-way valves

Electrical data				
F solenoid coil				
Electrical connection		Plug vanes for plug sockets MSSD-F, KMF		
Operating voltage	D.C. voltage	[V DC]	12, 24, 42, 48	
	A.C. voltage	[V AC]	24, 42, 48, 110, 230, 240 (50 ... 60 Hz)	
Coil characteristics	D.C. voltage	[W]	4.5	
	A.C. voltage	[VA]	Pull: 7.5 Hold: 6	
Protection class to EN 60 529			IP65 (in combination with plug socket)	

Materials



1	Housing	Aluminium die-cast, anodised
–	Seals	Nitrile rubber

Solenoid valves MFH, Tiger Classic

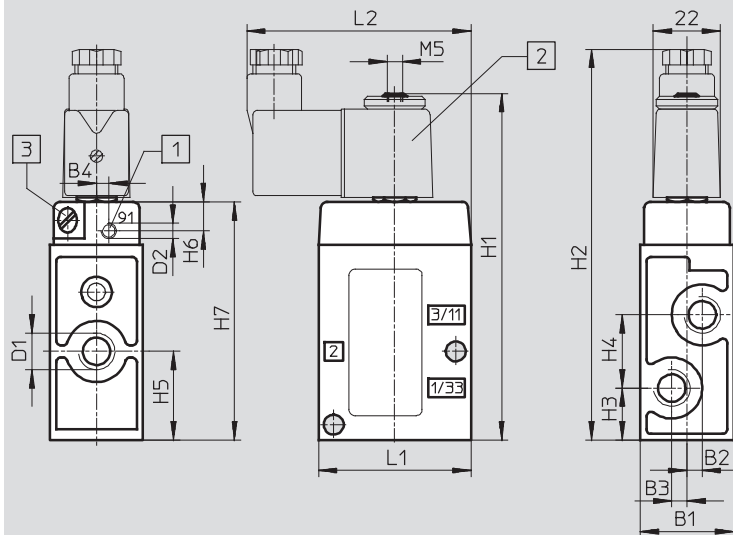
Technical data – 3/2-way valves

FESTO

Dimensions

Download CAD Data → www.festo.com/us/cad

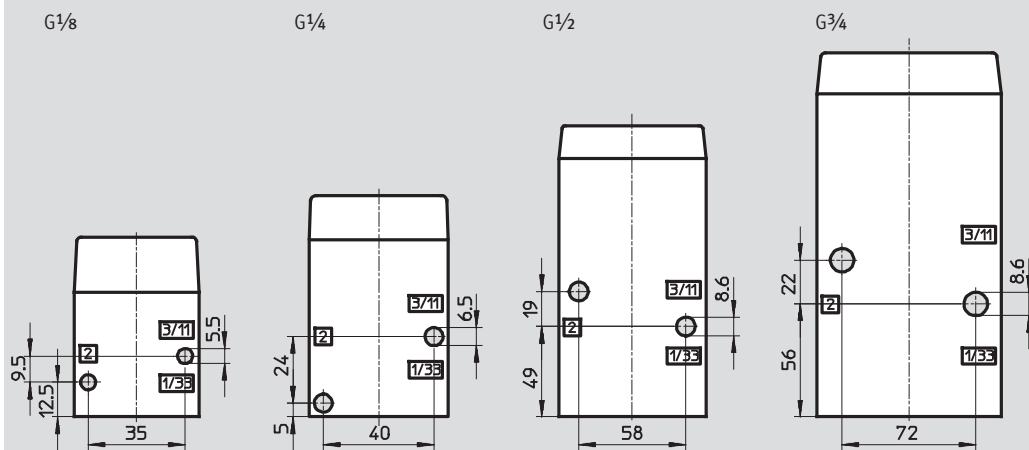
MFH, MOFH



- 1 Additional connection for external pilot air with MFH-3-...-S
- 2 Solenoid coil is 360° rotatable
- 3 Manual override can be repositioned by 180°

Pneumatic connection	B1	B2	B3	B4	D1	D2	H1	H2	H3	H4	H5	H6	H7	L1	L2
G $\frac{1}{8}$	26	3.5	3.5	2.7	G $\frac{1}{8}$	M5	97	111	12.5	19	22	9.5	63	45	71
G $\frac{1}{4}$	30.4	5	5	4	G $\frac{1}{4}$	M5	112	126	17	24	29	9.5	78	50	74
G $\frac{1}{2}$	52	8	8	–	G $\frac{1}{2}$	G $\frac{1}{8}$	151	165	30	38	49	10.5	117	80	89
G $\frac{3}{4}$	68	8	8	–	G $\frac{3}{4}$	G $\frac{1}{8}$	171	185	34	44	56	11	137	92	95

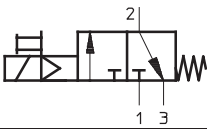
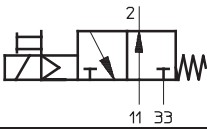
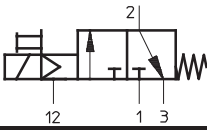
Attachment diagram



Solenoid valves MFH, Tiger Classic

FESTO

Technical data – 3/2-way valves

Ordering data				
Circuit symbol	Description	Pneumatic connection	Part No.	Type
	Without F solenoid coil ¹⁾ , internal pilot air supply	G $\frac{1}{8}$	7802	MFH-3- $\frac{1}{8}$
		G $\frac{1}{4}$	9964	MFH-3- $\frac{1}{4}$
		G $\frac{1}{2}$	9857	MFH-3- $\frac{1}{2}$
		G $\frac{3}{4}$	11967	MFH-3- $\frac{3}{4}$
	Without F solenoid coil ¹⁾ , internal pilot air supply	G $\frac{1}{8}$	7877	MOFH-3- $\frac{1}{8}$
		G $\frac{1}{4}$	7876	MOFH-3- $\frac{1}{4}$
		G $\frac{1}{2}$	7884	MOFH-3- $\frac{1}{2}$
		G $\frac{3}{4}$	11969	MOFH-3- $\frac{3}{4}$
	Without F solenoid coil ¹⁾ , external pilot air supply	G $\frac{1}{8}$	7958	MFH-3- $\frac{1}{8}$ -S
		G $\frac{1}{4}$	7959	MFH-3- $\frac{1}{4}$ -S
		G $\frac{1}{2}$	7960	MFH-3- $\frac{1}{2}$ -S
		G $\frac{3}{4}$	11968	MFH-3- $\frac{3}{4}$ -S

1) F solenoid coils → 44

Ordering data – Wearing parts kits		
Pneumatic connection	Part No.	Type
G $\frac{1}{8}$	104206	MFH-3- $\frac{1}{8}$
G $\frac{1}{4}$	104207	MFH-3- $\frac{1}{4}$
G $\frac{1}{2}$	104208	MFH-3- $\frac{1}{2}$

Solenoid valves MFH, Tiger Classic

FESTO

Technical data – 5/2-way valves

Flow rate

500 ... 3,700 l/min

Voltage

12, 24, 42, 48 V DC
24, 42, 48, 110, 230,
240 V AC

Wearing parts kits

→ 21



General technical data				
Pneumatic connection		G ¹ / ₈	G ¹ / ₄	G ¹ / ₂
Valve function		5/2-way, single solenoid		
Constructional design		Poppet valve		
Sealing principle		Soft		
Actuation type		Electrical		
Type of reset		Mechanical spring		
Type of control		Piloted		
Direction of flow		Non reversible		
Pilot air supply		Internal or external		
Exhaust function		With flow control		
Manual override		Detenting		
Type of mounting		Via through holes		
Mounting position		Any		
Nominal size	[mm]	5	7	14
Standard nominal flow rate	[l/min]	500	1,000	3,700
Product weight	[g]	270	290	1,135

Operating and environmental conditions					
Pneumatic connection			G1/8	G1/4	G1/2
Operating medium			Compressed air in accordance with ISO 8573-1:2010 [7:4:4]		
Note on operating/pilot medium			Operation with lubricated medium possible (in which case lubricated operation will always be required)		
Operating pressure	Internal pilot air supply	[bar]	1.8 ... 8	2.2 ... 8	2 ... 8
	External pilot air supply	[bar]	0 ... 10	0 ... 8	0 ... 8
Pilot pressure		[bar]	1 ... 8	1.5 ... 8	1.5 ... 8
Ambient temperature		[°C]	−5 ... +40		
Temperature of medium		[°C]	−10 ... +60		
Note on materials			RoHS-compliant		

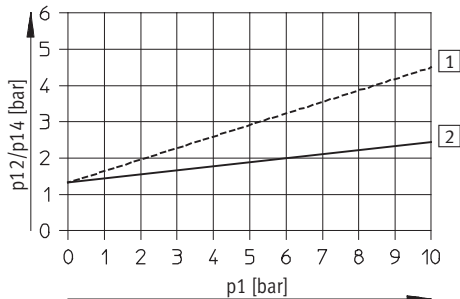
Solenoid valves MFH, Tiger Classic

Technical data – 5/2-way valves

FESTO

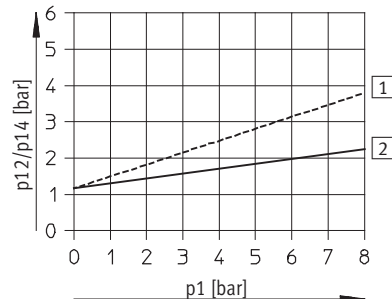
Minimal pilot pressure p_{12} , p_{14} as a function of operating pressure p_1 (external pilot air supply)

MFH-5-1/8-S



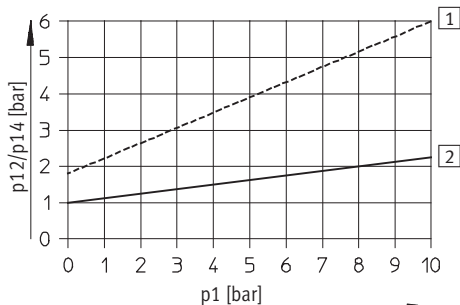
----- Exhaust throttled
 ——— Exhaust unthrottled

MFH-5-1/4-S



----- Exhaust throttled
 ——— Exhaust unthrottled

MFH-5-1/2-S



----- Exhaust throttled
 ——— Exhaust unthrottled

Valve response times [ms]

Pneumatic connection	G1/8		G1/4		G1/2	
Pilot air supply	Internal	External	Internal	External	Internal	External
On	8	8	9	9	15	21
Off	36	36	29	29	154	150

Solenoid valves MFH, Tiger Classic

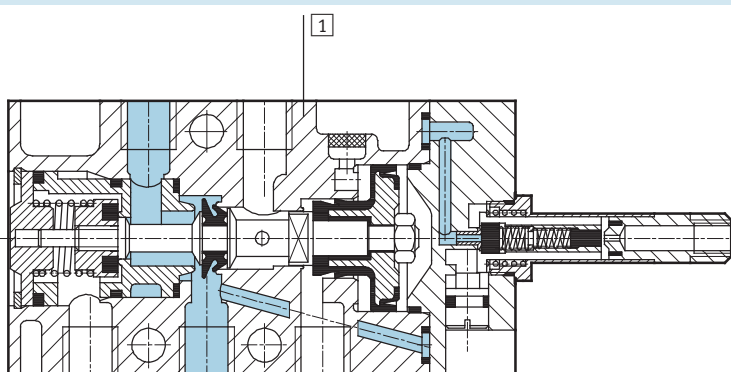
FESTO

Technical data – 5/2-way valves

Electrical data			
F solenoid coil			
Electrical connection		Plug vanes for plug sockets MSSD-F, KMF	
Operating voltage	D.C. voltage	[V DC]	12, 24, 42, 48
	A.C. voltage	[V AC]	24, 42, 48, 110, 230, 240 (50 ... 60 Hz)
Coil characteristics	D.C. voltage	[W]	4.5
	A.C. voltage	[VA]	Pull: 7.5 Hold: 6
Protection class to EN 60 529		IP65 (in combination with plug socket)	

Materials

Sectional view



1	Housing	Aluminium die-cast, anodised
–	Seals	Nitrile rubber

Solenoid valves MFH, Tiger Classic

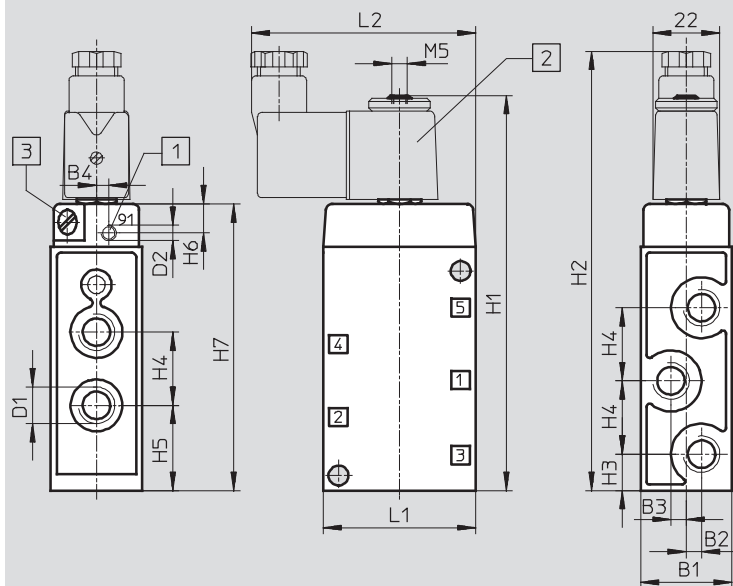
Technical data – 5/2-way valves

FESTO

Dimensions

Download CAD Data → www.festo.com/us/cad

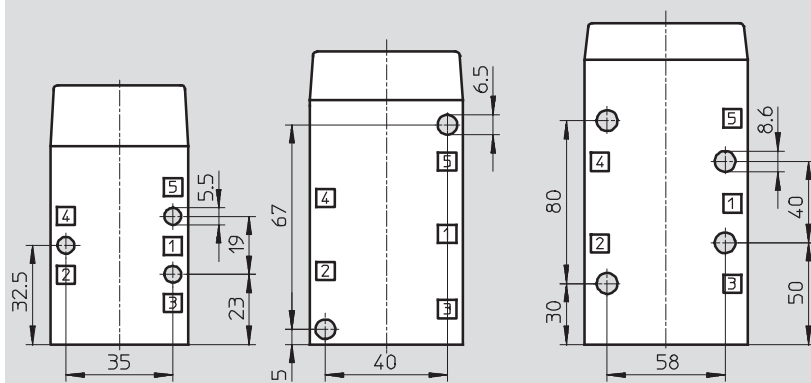
MFH



- 1 Additional connection for external pilot air with MFH-5-...-S
- 2 Solenoid coil is 360° rotatable
- 3 Manual override can be repositioned by 180°

Pneumatic connection	B1	B2	B3	B4	D1	D2	H1	H2	H3	H4	H5	H6	H7	L1	L2
G $\frac{1}{8}$	26	3.5	3.5	2.7	G $\frac{1}{8}$	M5	117	131	13.5	19	23	9.5	83	45	71
G $\frac{1}{4}$	30.4	–	5	4	G $\frac{1}{4}$	M5	128	143	12	24	28	9.5	128	50	74
G $\frac{1}{2}$	52	–	8	–	G $\frac{1}{2}$	G $\frac{1}{8}$	192	209	32	38	51	10.5	158	80	89

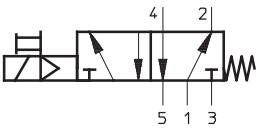
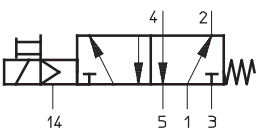
Attachment diagram



Solenoid valves MFH, Tiger Classic

FESTO

Technical data – 5/2-way valves

Ordering data				
Circuit symbol	Description	Pneumatic connection	Part No.	Type
	Without F solenoid coil ¹⁾ , internal pilot air supply	G ¹ / ₈	9982	MFH-5-1/8
		G ¹ / ₄	6211	MFH-5-1/4
		G ¹ / ₂	6420	MFH-5-1/2
	Without F solenoid coil ¹⁾ , external pilot air supply	G ¹ / ₈	10348	MFH-5-1/8-S
		G ¹ / ₄	10349	MFH-5-1/4-S
		G ¹ / ₂	35547	MFH-5-1/2-S

1) F solenoid coils → 44

Ordering data – Wearing parts kits		
Pneumatic connection	Part No.	Type
G ¹ / ₈	104209	MFH-5-1/8¹⁾²⁾
G ¹ / ₄	104211	MFH-5-1/4³⁾⁴⁾

- 1) Order mounting sleeves 228 389 separately
- 2) Use up to E602 series
- 3) Order mounting sleeves 229 363 separately
- 4) Use from 1/81 series

Double solenoid valves JMFH, Tiger Classic

FESTO

Technical data – 5/2-way double solenoid valves

Flow rate

600 ... 4,500 l/min

Voltage

12, 24, 42, 48 V DC
24, 42, 48, 110, 230,
240 V AC

Wearing parts kits

→ 26



General technical data						
Pneumatic connection			G1/8	G1/4	G1/2	
Valve function			5/2-way, double solenoid			
Constructional design			Poppet valve			
Sealing principle			Soft			
Actuation type			Electrical			
Type of control			Piloted			
Pilot air supply			Internal or external			
Direction of flow			Non reversible			
Exhaust function			With flow control			
Manual override			Detenting			
Type of mounting			Via through holes			
Mounting position			Any			
Nominal size			[mm]	5	7	14
Standard nominal flow rate	Internal pilot air supply		[l/min]	600	1,100	4,500
	External pilot air supply		[l/min]	600	1,100	4,000
Product weight			425	530	1,210	

Operating and environmental conditions					
Pneumatic connection			G1/8	G1/4	G1/2
Operating medium			Compressed air in accordance with ISO 8573-1:2010 [7:4:4]		
Note on operating/pilot medium			Operation with lubricated medium possible (in which case lubricated operation will always be required)		
Operating pressure	Internal pilot air supply	[bar]	1.5 ... 8	1.5 ... 8	2 ... 8
	External pilot air supply	[bar]	0 ... 8	0 ... 8	0 ... 8
	With dominant signal	[bar]	2.5 ... 8	2.5 ... 8	–
Pilot pressure		[bar]	1.2 ... 8	1.2 ... 8	0.5 ... 8
Ambient temperature		[°C]	–5 ... +40		
Temperature of medium		[°C]	–10 ... +60		
Note on materials			RoHS-compliant		

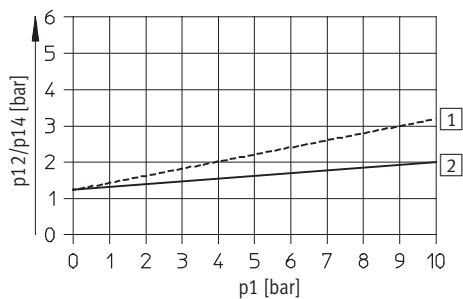
Double solenoid valves JMFH, Tiger Classic

FESTO

Technical data – 5/2-way double solenoid valves

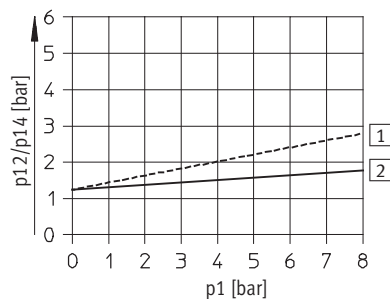
Minimal pilot pressure p_{12} , p_{14} as a function of operating pressure p_1 (external pilot air supply)

JMFH-5-1/8-S



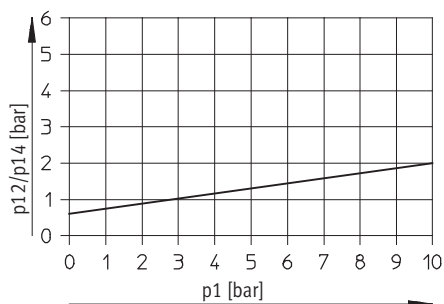
----- Exhaust throttled
 ————— Exhaust unthrottled

JMFH-5-1/4-S



----- Exhaust throttled
 ————— Exhaust unthrottled

JMFH-5-1/2-S



Valve response times [ms]

Pneumatic connection	G $\frac{1}{8}$		G $\frac{1}{4}$		G $\frac{1}{2}$
		Dominating signal at 14		Dominating signal at 14	
Internal pilot air supply					
On/changeover	–	16	–	24	–
Off/changeover	18	24	11	32	20
External pilot air supply					
On/changeover	–	–	–	–	–
Off/changeover	18	–	11	–	20

Double solenoid valves JMFH, Tiger Classic

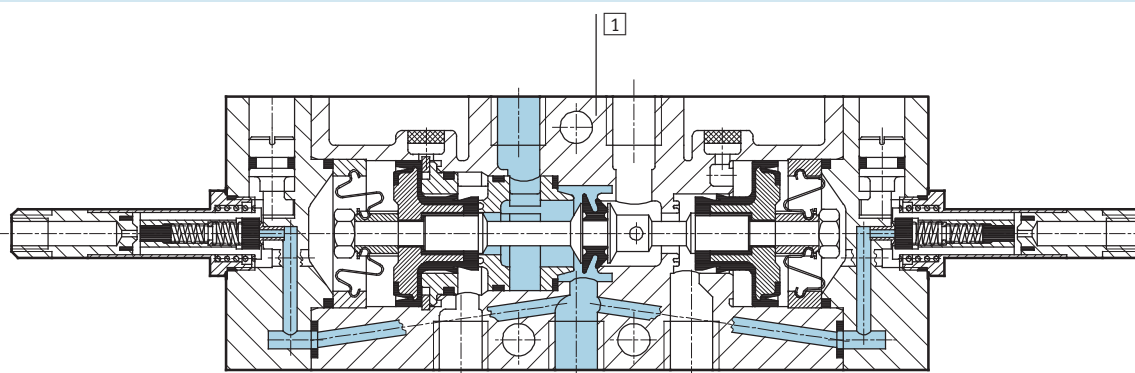
FESTO

Technical data – 5/2-way double solenoid valves

Electrical data				
F solenoid coil				
Electrical connection			Plug vanes for plug sockets MSSD-F, KMF	
Operating voltage	D.C. voltage	[V DC]	12, 24, 42, 48	
	A.C. voltage	[V AC]	24, 42, 48, 110, 230, 240 (50 ... 60 Hz)	
Coil characteristics	D.C. voltage	[W]	4.5	
	A.C. voltage	[VA]	Pull: 7.5 Hold: 6	
Protection class to EN 60 529			IP65 (in combination with plug socket)	

Materials

Sectional view



1 Housing		Aluminium die-cast, anodised
– Seals		Nitrile rubber

Double solenoid valves JMFH, Tiger Classic

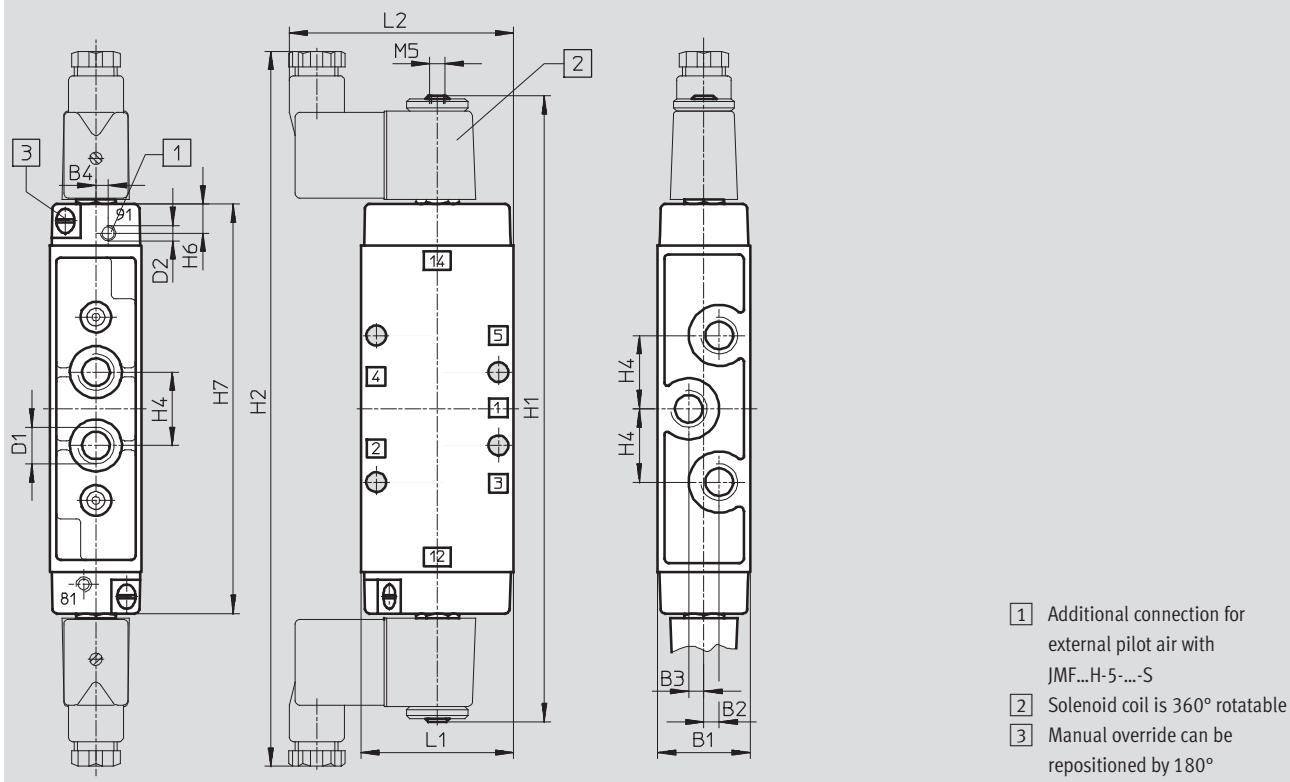
Technical data – 5/2-way double solenoid valves

FESTO

Dimensions

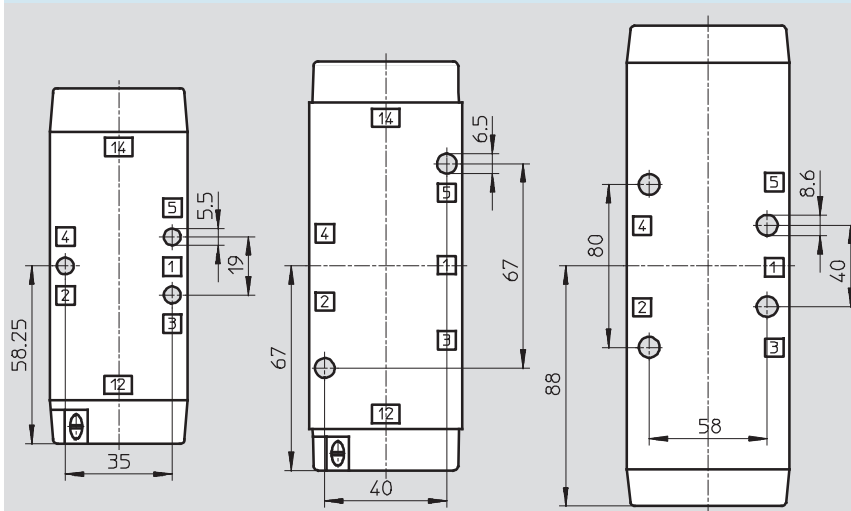
Download CAD Data → www.festo.com/us/cad

JMFH, JMFDH



Pneumatic connection	B1	B2	B3	B4	D1	D2	H1	H2	H4	H6	H7	L1	L2
G $\frac{1}{8}$	26	3.5	3.5	2.7	G $\frac{1}{8}$	M5	184	217	19	9.5	116.5	45	71
G $\frac{1}{4}$	30.4	–	5	4	G $\frac{1}{4}$	M5	202	235	24	9.5	134	50	74
G $\frac{1}{2}$	52	–	8	–	G $\frac{1}{2}$	G $\frac{1}{8}$	244	272	38	10.5	176	80	89

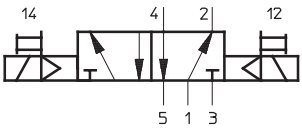
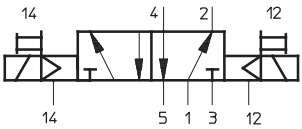
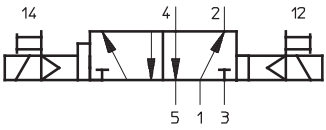
Attachment diagram



Double solenoid valves JMFH, Tiger Classic

FESTO

Technical data – 5/2-way double solenoid valves

Ordering data				
Circuit symbol	Description	Pneumatic connection	Part No.	Type
	Without F solenoid coil ¹⁾ , internal pilot air supply	G $\frac{1}{8}$	8820	JMFH-5-1/8
		G $\frac{1}{4}$	10410	JMFH-5-1/4
		G $\frac{1}{2}$	10166	JMFH-5-1/2
	Without F solenoid coil ¹⁾ , external pilot air supply	G $\frac{1}{8}$	14008	JMFH-5-1/8-S
		G $\frac{1}{4}$	14009	JMFH-5-1/4-S
		G $\frac{1}{2}$	35548	JMFH-5-1/2-S
	Without F solenoid coil ¹⁾ , internal pilot air supply, with dominating signal at 14	G $\frac{1}{8}$	8821	JMFDH-5-1/8
		G $\frac{1}{4}$	10411	JMFDH-5-1/4

1) F solenoid coils → 44

Ordering data – Wearing parts kits		
Pneumatic connection	Part No.	Type
G $\frac{1}{8}$	104891	JMFH-5-1/8¹⁾
G $\frac{1}{4}$	104892	JMFH-5-1/4²⁾

1) Order mounting sleeves 228 389 separately

2) Order mounting sleeves 229 363 separately

Pneumatic valves, Tiger Classic

Type codes

FESTO

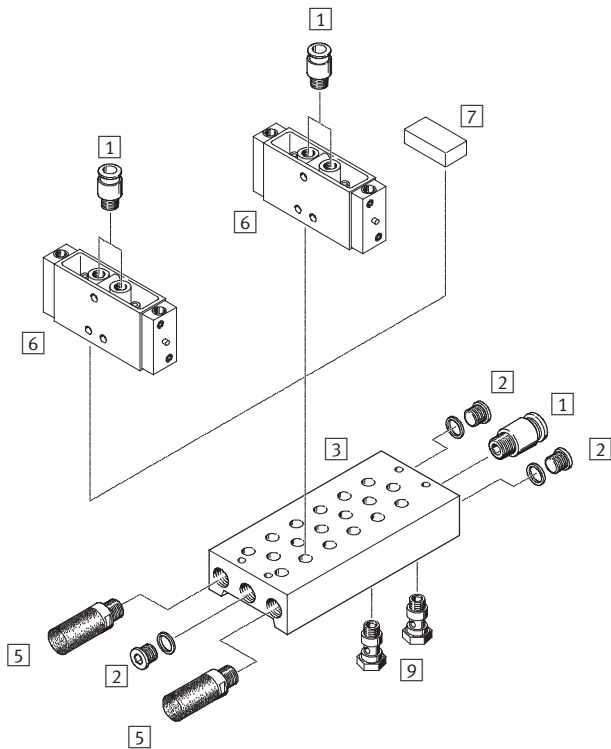
		VL/O	—	3	—	1/4	—	
Type								
VL/O	Single pilot, normally open or closed							
VL	Single pilot							
JH	Double pilot							
JMFDH	Double pilot, dominant							
Valve function								
3	3/2-way valve							
5	5/2-way valve							
Pneumatic connection								
1/8	G1/8							
1/4	G1/4							
1/2	G1/2							
3/4	G3/4							
Generation								
B	Series B							

Pneumatic valves, Tiger Classic

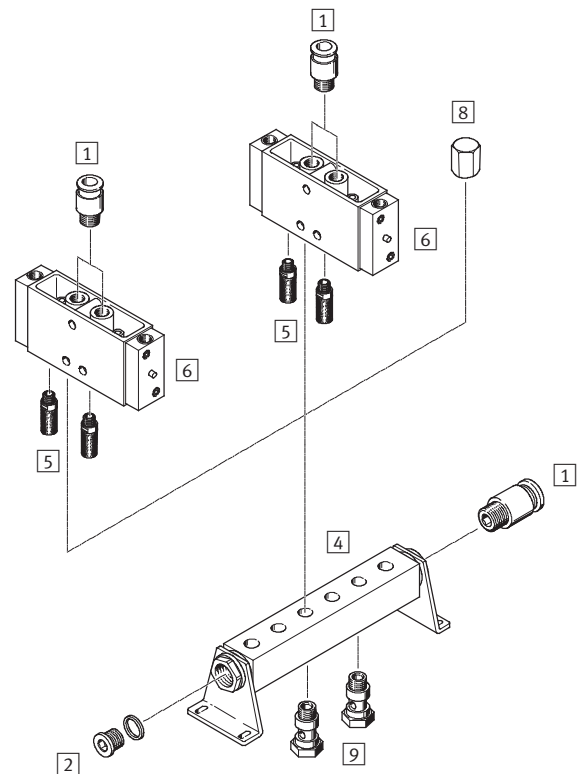
Peripherals overview

FESTO

Mounting on manifold block



Mounting on manifold strip



Accessories		
	Brief description	→ Page/Internet
1	Push-in fitting QS	For connecting standard O.D. tubing quick star
2	Blanking plug G	3 included in the scope of delivery for PRS manifold block 1 included in the scope of delivery for PAL manifold strip g
3	Manifold block PRS	42
4	Manifold strip PAL	40
5	Silencer	For fitting in exhaust ports u
6	Pneumatic valve VL, JH	vl, jh
7	Blanking plate PRSB	For covering an unused valve position 43
8	Blanking cap VTM	For blanking an unused valve position 41
9	Hollow bolt VT	For distribution of compressed air or for separate compressed air supply 41

Pneumatic valves VL/O, Tiger Classic

FESTO

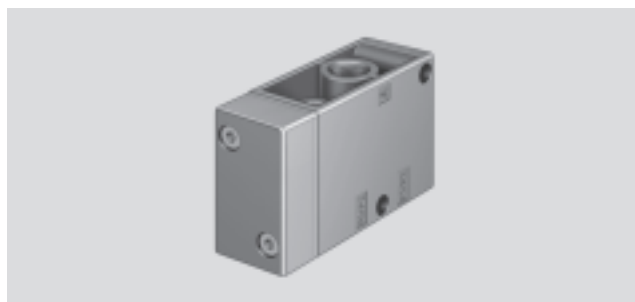
Technical data – 3/2-way valves

Flow rate

500 ... 7,500 l/min

Wearing parts kits

→ 32



General technical data				
Pneumatic connection	G1/8	G1/4	G1/2	G3/4
Valve function	3/2-way, single pilot			
Constructional design	Poppet valve			
Sealing principle	Soft			
Actuation type	Pneumatic			
Type of reset	Mechanical spring			
Type of pilot control	Direct			
Direction of flow	Reversible			
Exhaust function	With flow control			
Manual override	None			
Type of mounting	Via through holes			
Mounting position	Any			
Nominal size [mm]	5	7	14	19
Standard nominal flow rate	500	800	3,700	7,500
Product weight [g]	150	230	860	1,200

Operating and environmental conditions				
Pneumatic connection	G1/8	G1/4	G1/2	G3/4
Operating medium	Compressed air in accordance with ISO 8573-1:2010 [7:4:4]			
Note on operating/pilot medium	Operation with lubricated medium possible (in which case lubricated operation will always be required)			
Operating pressure	Normally closed [bar]	–0.95 ... +10	–0.95 ... +10	–0.95 ... +10
	Normally open [bar]	0 ... 10	0 ... 10	0 ... 10
Pilot pressure	See diagram (max. 10 bar)			
Ambient temperature [°C]	–10 ... +60			
Note on materials	RoHS-compliant			

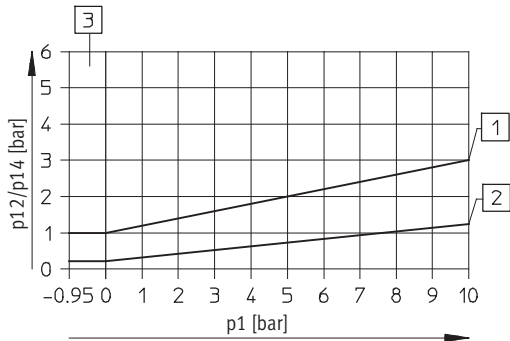
Pneumatic valves VL/O, Tiger Classic

Technical data – 3/2-way valves

FESTO

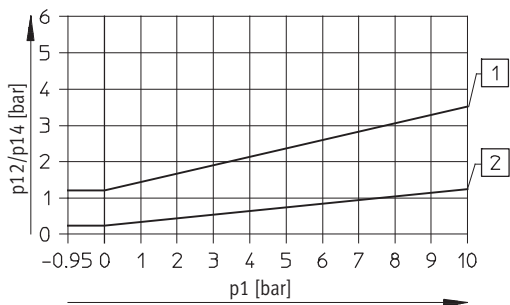
Minimal pilot pressure p_{12}/p_{14} as a function of operating pressure p_1

VL/O-3-1/8-B



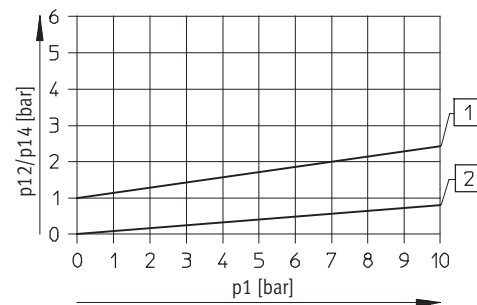
- 1 Switch-on pressure
- 2 Switch-off pressure
- 3 Only for normally closed

VL/O-3-1/4 – Normally closed



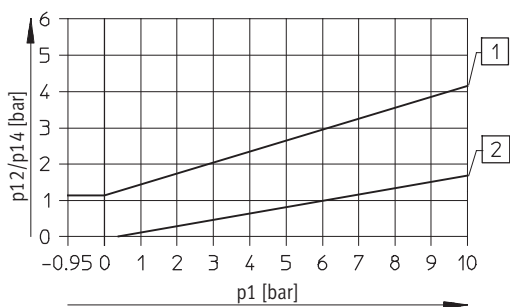
- 1 Switch-on pressure
- 2 Switch-off pressure

VL/O-3-1/4 – Normally open



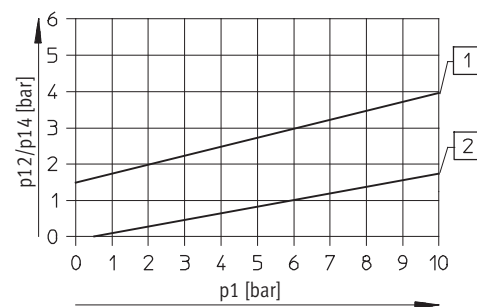
- 1 Switch-on pressure
- 2 Switch-off pressure

VL/O-3-1/2 – Normally closed



- 1 Switch-on pressure
- 2 Switch-off pressure

VL/O-3-1/2 – Normally open



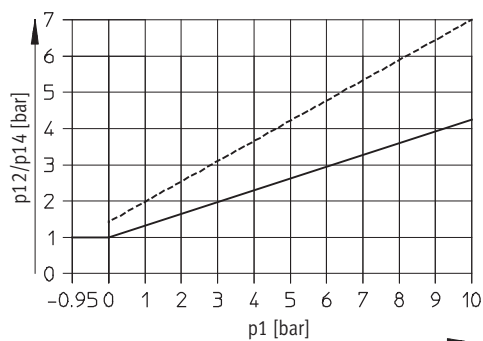
- 1 Switch-on pressure
- 2 Switch-off pressure

Pneumatic valves VL/O, Tiger Classic

Technical data – 3/2-way valves

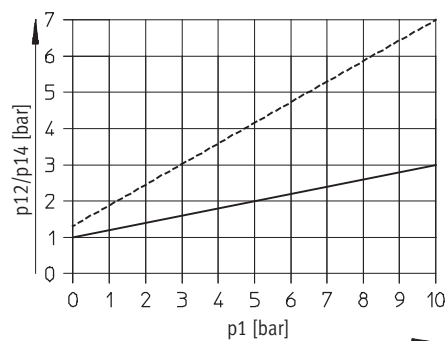
FESTO

VL/O-3-3/4 – Normally closed



----- Exhaust throttled
 ————— Exhaust unthrottled

VL/O-3-3/4 – Normally open



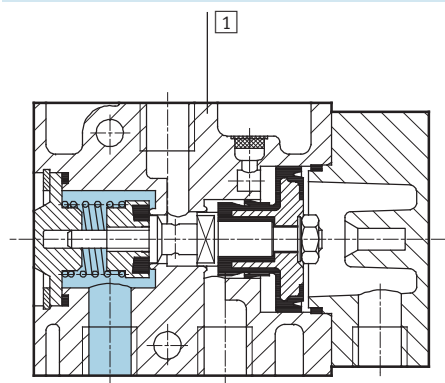
----- Exhaust throttled
 ————— Exhaust unthrottled

Valve response times [ms]

Pneumatic connection	G1/8	G1/4	G1/2	G3/4
On	4	8	17	23
Off	10	30	30	23

Materials

Sectional view



1	Housing	Aluminium die-cast, anodised
–	Seals	Nitrile rubber

Pneumatic valves VL/O, Tiger Classic

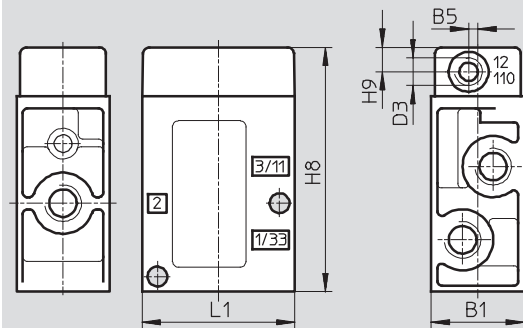
Technical data – 3/2-way valves

FESTO

Dimensions

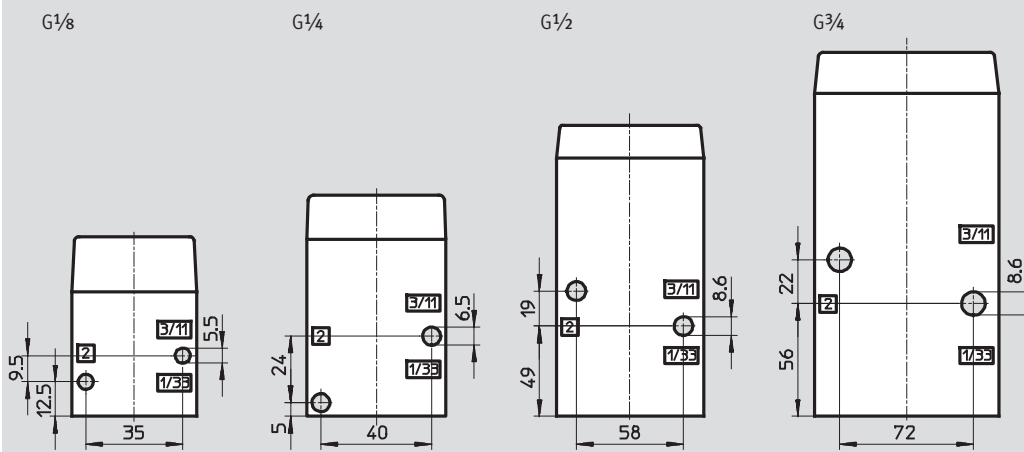
Download CAD Data → www.festo.com/us/cad

VL/O



Pneumatic connection	B1	B5	D3	H8	H9	L1
G $\frac{1}{8}$	26	3	G $\frac{1}{8}$	65	8	45
G $\frac{1}{4}$	30.4	–	G $\frac{1}{8}$	80	8	50
G $\frac{1}{2}$	52	–	G $\frac{1}{4}$	118	10	80
G $\frac{3}{4}$	68	–	G $\frac{1}{4}$	138	10	92

Attachment diagram



Ordering data

Circuit symbol	Description	Pneumatic connection	Part No.	Type
	Mechanical reset, optionally normally open or closed	G $\frac{1}{8}$	7803	VL/O-3-$\frac{1}{8}$-B
		G $\frac{1}{4}$	9984	VL/O-3-$\frac{1}{4}$
		G $\frac{1}{2}$	9983	VL/O-3-$\frac{1}{2}$
		G $\frac{3}{4}$	10049	VL/O-3-$\frac{3}{4}$

Ordering data – Wearing parts kits

Pneumatic connection	Part No.	Type
G $\frac{1}{8}$	104222	VL/O-3-$\frac{1}{8}$-B
G $\frac{1}{4}$	104207	VL/O-3-$\frac{1}{4}$
G $\frac{1}{2}$	104208	VL/O-3-$\frac{1}{2}$

Pneumatic valves VL, Tiger Classic

FESTO

Technical data – 5/2-way valves

Flow rate

500 ... 3,700 l/min

Wearing parts kits

→ 35



General technical data				
Pneumatic connection		G1/8	G1/4	G1/2
Valve function		5/2-way, single pilot		
Constructional design		Poppet valve		
Sealing principle		Soft		
Actuation type		Pneumatic		
Type of reset		Mechanical spring		
Type of pilot control		Direct		
Direction of flow		Non reversible		
Manual override		None		
Exhaust function		With flow control		
Type of mounting		Via through holes		
Mounting position		Any		
Nominal size	[mm]	5	7	14
Standard nominal flow rate	[l/min]	500	800	3,700
Product weight		180	220	1,070

Operating and environmental conditions				
Pneumatic connection		G1/8	G1/4	G1/2
Operating medium		Compressed air in accordance with ISO 8573-1:2010 [7:4:4]		
Note on operating/pilot medium		Operation with lubricated medium possible (in which case lubricated operation will always be required)		
Operating pressure	[bar]	0 ... 10	0 ... 8	0 ... 10
Pilot pressure	[bar]	See diagram (max. 10 bar)		
Ambient temperature	[°C]	-10 ... +60		
Note on materials		RoHS-compliant		

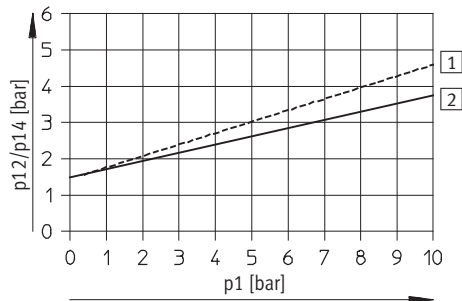
Pneumatic valves VL, Tiger Classic

Technical data – 5/2-way valves

FESTO

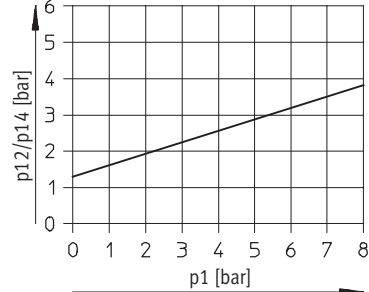
Minimal pilot pressure p_{12}/p_{14} as a function of operating pressure p_1

VL-5-1/8

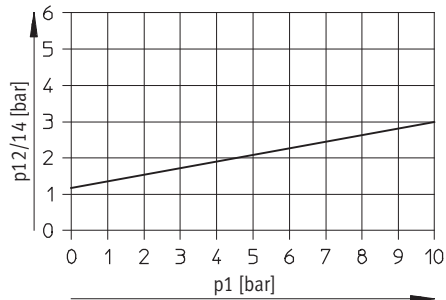


----- Exhaust throttled
 ——— Exhaust unthrottled

VL-5-1/4



VL-5-1/2

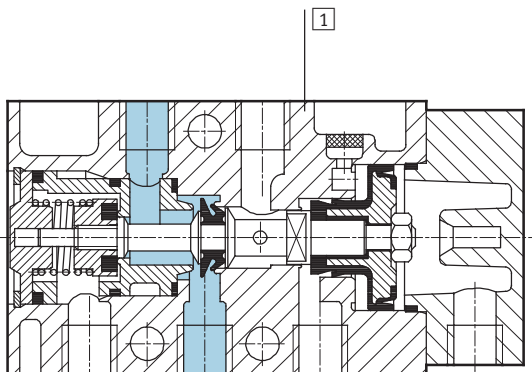


Valve response times [ms]

Pneumatic connection	G1/8	G1/4	G1/2
On	5	8	6
Off	16	12	27

Materials

Sectional view



1	Housing	Aluminium die-cast, anodised
–	Seals	Nitrile rubber

Pneumatic valves VL, Tiger Classic

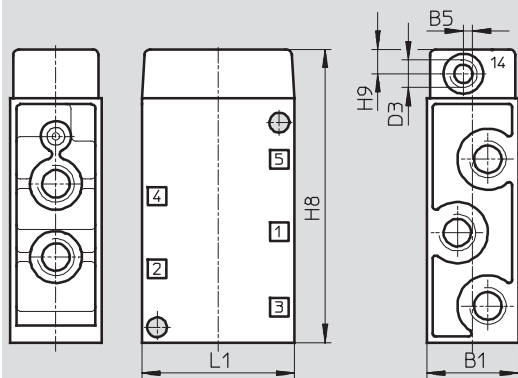
FESTO

Technical data – 5/2-way valves

Dimensions

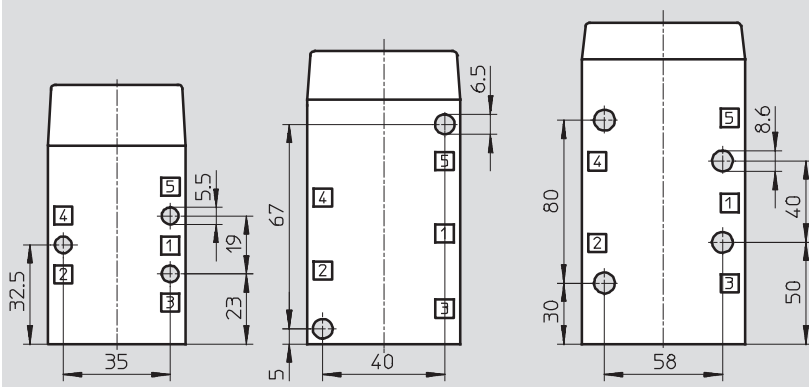
Download CAD Data → www.festo.com/us/cad

VL



Pneumatic connection	B1	B5	D3	H8	H9	L1
G $\frac{1}{8}$	26	3	G $\frac{1}{8}$	85	8	45
G $\frac{1}{4}$	30.4	–	G $\frac{1}{8}$	96	8	50
G $\frac{1}{2}$	52	–	G $\frac{1}{4}$	159	10	80

Attachment diagram



Ordering data

Circuit symbol	Description	Pneumatic connection	Part No.	Type
	Mechanical reset	G $\frac{1}{8}$	9764	VL-5- $\frac{1}{8}$
		G $\frac{1}{4}$	9199	VL-5- $\frac{1}{4}$
		G $\frac{1}{2}$	9445	VL-5- $\frac{1}{2}$

Ordering data – Wearing parts kits

Pneumatic connection	Part No.	Type
G $\frac{1}{8}$	104209	VL-5- $\frac{1}{8}$ ¹⁾
G $\frac{1}{4}$	104211	VL-5- $\frac{1}{4}$ ²⁾³⁾
G $\frac{1}{2}$	104212	VL-5- $\frac{1}{2}$

- 1) Order mounting sleeves 228 389 separately
- 2) Order mounting sleeves 229 363 separately
- 3) Use from 1/81 series

Pneumatic valves JH, Tiger Classic

Technical data – 5/2-way valves, double pilot valves

FESTO

Flow rate

600 ... 4,500 l/min

Wearing parts kits

→ 39



General technical data			
Pneumatic connection	G1/8	G1/4	G1/2
Valve function	5/2-way, double pilot		
Constructional design	Poppet valve		
Sealing principle	Soft		
Actuation type	Pneumatic		
Type of pilot control	Direct		
Direction of flow	Non reversible		
Exhaust function	With flow control		
Manual override	Resetting		
Type of mounting	Via through holes		
Mounting position	Any		
Nominal size [mm]	5	7	14
Standard nominal flow rate	600	1,100	4,500
Product weight [g]	245	330	1,130

Operating and environmental conditions			
Pneumatic connection	G1/8	G1/4	G1/2
Operating medium	Compressed air in accordance with ISO 8573-1:2010 [7:4:4]		
Note on operating/pilot medium	Operation with lubricated medium possible (in which case lubricated operation will always be required)		
Operating pressure	[bar]	0 ... 10	0 ... 8
Pilot pressure	[bar]	See diagram (max. 10 bar)	
Ambient temperature	[°C]	−10 ... +60	
Note on materials	RoHS-compliant		

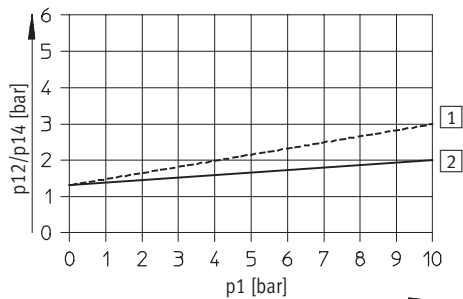
Pneumatic valves JH, Tiger Classic

FESTO

Technical data – 5/2-way valves, double pilot valves

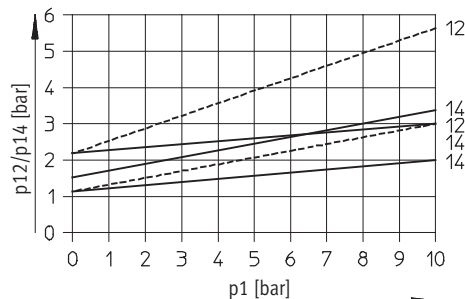
Minimal pilot pressure p_{12}/p_{14} as a function of operating pressure p_1

JH-5-1/8



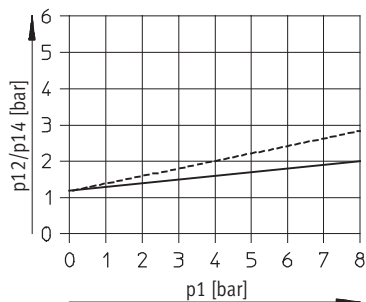
----- Exhaust throttled
 ——— Exhaust unthrottled

JDH-5-1/8



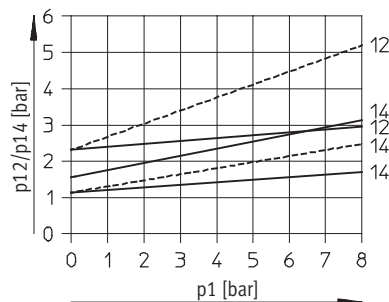
----- Exhaust throttled
 ——— Exhaust unthrottled

JH-5-1/4



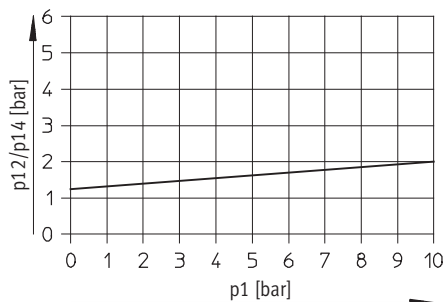
----- Exhaust throttled
 ——— Exhaust unthrottled

JDH-5-1/4



----- Exhaust throttled
 ——— Exhaust unthrottled

JH-5-1/2



Valve response times [ms]

Pneumatic connection	G1/8		G1/4		G1/2
		Dominating signal at 14		Dominating signal at 14	
On/changeover	–	9	–	7	–
Off/changeover	2	16	7	16	3

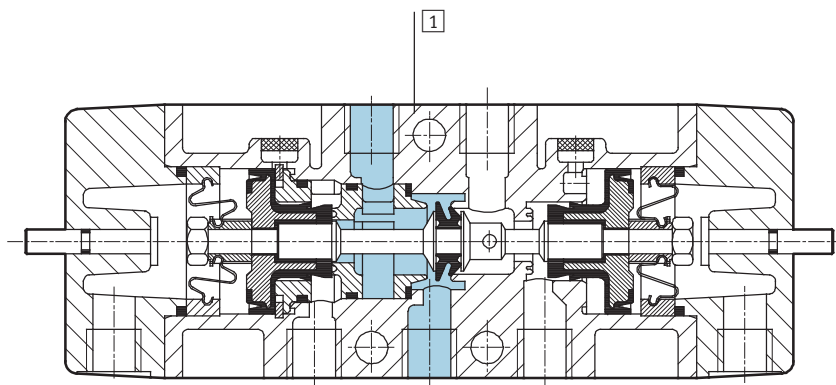
Pneumatic valves JH, Tiger Classic

Technical data – 5/2-way valves, double pilot valves

FESTO

Materials

Sectional view

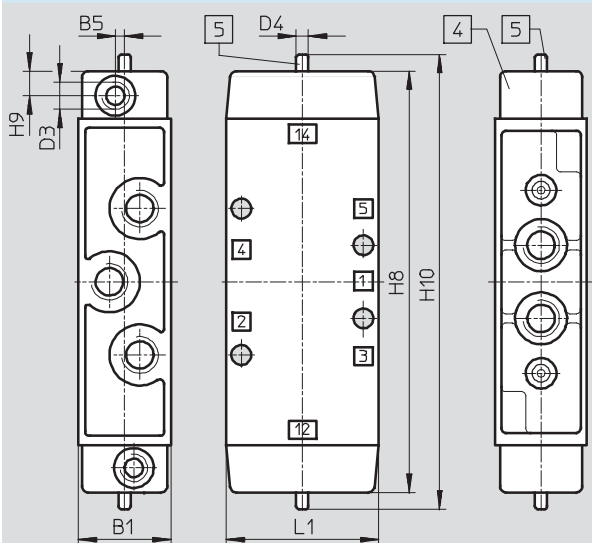


1	Housing	Aluminium die-cast, anodised
–	Seals	Nitrile rubber

Dimensions

Download CAD Data → www.festo.com/us/cad

JH, JDH



- 4 Cover can be repositioned by 180°
- 5 Manual override

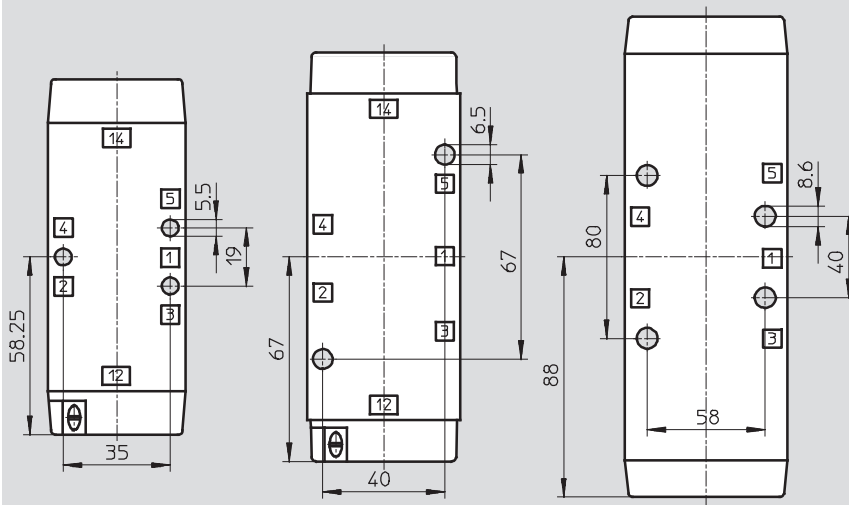
Pneumatic connection	B1	B5	D3	D4 Ø	H8	H9	H10	L1
G $\frac{1}{8}$	26	3	G $\frac{1}{8}$	5	120	8	132	45
G $\frac{1}{4}$	30.4	–	G $\frac{1}{8}$	5	138	8	149	50
G $\frac{1}{2}$	52	–	G $\frac{1}{4}$	9.9	178	10	193	80

Pneumatic valves JH, Tiger Classic

Technical data – 5/2-way valves, double pilot valves

FESTO

Attachment diagram



Ordering data				
Circuit symbol	Description	Pneumatic connection	Part No.	Type
		G1/8	8823	JH-5-1/8
		G1/4	10408	JH-5-1/4
		G1/2	10165	JH-5-1/2
	With dominating signal at 14	G1/8	8824	JDH-5-1/8
		G1/4	10409	JDH-5-1/4

Ordering data – Wearing parts kits		
Pneumatic connection	Part No.	Type
G1/8	104891	JH-5-1/8 ¹⁾
G1/4	104892	JH-5-1/4 ²⁾

1) Order mounting sleeves 228 389 separately

2) Order mounting sleeves 229 363 separately

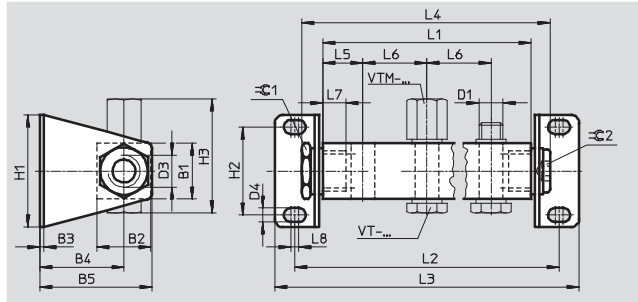
Solenoid/pneumatic valves, Tiger Classic

Accessories

FESTO

Manifold strip PAL

Materials:
Manifold: anodised aluminium
Mounting bracket: galvanised steel



Dimensions and ordering data																	
Type	B1	B2	B3	B4	B5	D1	D3	D4	H1	H2	H3	L5	L6	L7	L8	≡ 1	≡ 2
PAL-1/8-...	20	21	2	33.5	44.5	G1/8	G1/4	5.2	44	32	43	18	34	12	4	19	8
PAL-1/4-...	28	27	2	42	56	G1/4	G3/8	7	56	44	56	20	32	14	4	24	10
PAL-1/2-...	40	40	3	73	93	G1/2	G3/4	11	80	60	75	35	69	16	5	36	17

Number of valve ports	L1	L2	L3	L4	Weight [g]	Part No.	Type
Pneumatic connection G1/8							
2	70	96	114	89	145	8601	PAL-1/8-2
3	104	130	148	123	170	8602	PAL-1/8-3
4	138	164	182	157	190	8603	PAL-1/8-4
5	172	198	216	191	215	8604	PAL-1/8-5
6	206	232	250	225	240	9767	PAL-1/8-6
Pneumatic connection G1/4 ¹⁾							
2	72	100	120	94	330	9188	PAL-5-1/4-2
3	104	132	152	126	405	9189	PAL-5-1/4-3
4	136	164	184	158	480	9190	PAL-5-1/4-4
5	168	196	216	190	555	9191	PAL-5-1/4-5
6	200	228	248	222	630	9192	PAL-5-1/4-6
Pneumatic connection G1/2							
2	139	181	213	164	770	9492	PAL-1/2-2
3	208	250	282	233	915	9493	PAL-1/2-3
4	277	319	351	302	1 060	9494	PAL-1/2-4
5	346	388	420	371	1 220	9495	PAL-1/2-5
6	415	457	489	440	1 370	9496	PAL-1/2-6

1) MOFH-3-1/4 is not suitable for manifold mounting

Solenoid/pneumatic valves, Tiger Classic

FESTO

Accessories

Hollow bolt

VT

For manifold strip PAL

Material:

anodised aluminium



Ordering data			
Pneumatic connection	Weight [g]	Part No.	Type
G $\frac{1}{8}$	6	8626	VT- $\frac{1}{8}$
G $\frac{1}{4}$	15	5928	VT- $\frac{1}{8}$ -1 ¹⁾²⁾
G $\frac{1}{4}$	15	206147	VT- $\frac{1}{4}$ -2
G $\frac{1}{2}$	30	9986	VT- $\frac{1}{2}$

1) For valves with G $\frac{1}{8}$ connection

2) Sealing rings included in scope of delivery

Blanking cap

VTM

For sealing vacant valve positions

Material:

wrought aluminium alloy



Ordering data			
Pneumatic connection	Weight [g]	Part No.	Type
G $\frac{1}{8}$	5	9768	VTM- $\frac{1}{8}$
G $\frac{1}{4}$	5	9768	VTM- $\frac{1}{8}$ -1 ¹⁾
G $\frac{1}{4}$	7	3099	VTM- $\frac{1}{4}$
G $\frac{1}{2}$	28	9987	VTM- $\frac{1}{2}$

1) For valves with G $\frac{1}{8}$ connection

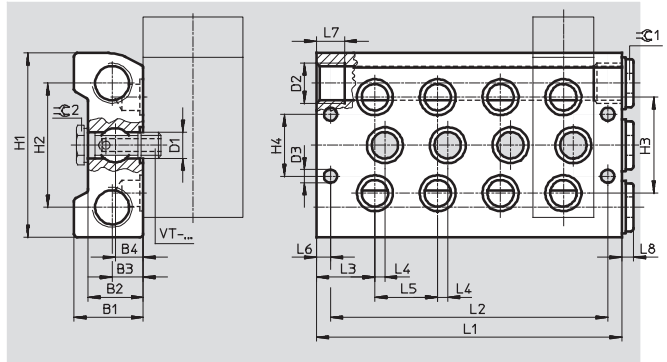
Solenoid/pneumatic valves, Tiger Classic

Accessories

FESTO

Manifold block PRS

Material:
anodised aluminium



Dimensions and ordering data																				
Type	B1	B2	B3	B4	D1	D2	D3	H1	H2	H3	H4	L3	L4	L5	L6	L7	L8	≈C 1	≈C 2	
PRS-1/8-...	28.5	22	12.5	10.8	G1/8	G3/8	6.6	80	56	38	28	23.5	7	27	7	12	5	8	14	
PRS-1/4-...	34.5	27.5	14	14	G1/4	G1/2	6.6	92	62	48	31	29.2	5	31.4	7	14	6	10	17	

Number of valve ports	L1	L2	Weight [g]	Part No.	Type
Pneumatic connection G1/8					
2	81	67	360	11898	PRS-1/8-2
3	108	94	460	11899	PRS-1/8-3
4	135	121	625	11900	PRS-1/8-4
5	162	148	650	11901	PRS-1/8-5
6	189	175	750	11902	PRS-1/8-6
Pneumatic connection G1/4					
2	89.8	75.8	590	10185	PRS-1/4-2
3	121.2	107.2	750	10186	PRS-1/4-3
4	152.6	138.6	900	10187	PRS-1/4-4
5	184	170	1070	10188	PRS-1/4-5
6	215.4	201.4	1 230	1089	PRS-1/4-6

Hollow bolt

VT

For manifold block PRS

Material:
anodised aluminium



Ordering data			
Pneumatic connection	Weight [g]	Part No.	Type
G1/8	17	11539	VT-1/8-PRSK
G1/4	32	9499	VT-1/4-PRS

Solenoid/pneumatic valves, Tiger Classic

FESTO

Accessories

Blanking plate

PRSB

For sealing vacant valve positions

Material:
aluminium



Ordering data			
Pneumatic connection	Weight [g]	Part No.	Type
G $\frac{1}{8}$	55	11687	PRSB- $\frac{1}{8}$
G $\frac{1}{4}$	80	11688	PRSB- $\frac{1}{4}$

Hollow bolt

VT

For separate compressed air supply on valve

Material:
anodised aluminium



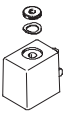
Ordering data			
Pneumatic connection	Weight [g]	Part No.	Type
G $\frac{1}{8}$	16	12634	VT- $\frac{1}{8}$ -AJK-P
G $\frac{1}{4}$	24	12910	VT- $\frac{1}{8}$ -AJS-P ¹⁾
G $\frac{1}{4}$	45	12635	VT- $\frac{1}{4}$ -AJ-P


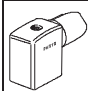
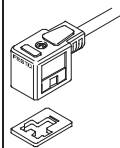
1) For valves with G $\frac{1}{8}$ connection


Solenoid/pneumatic valves, Tiger Classic

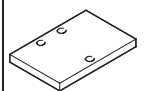
Accessories

FESTO

Ordering data – Solenoid coils		Technical data → Internet: msfg, msfw	
	Voltage	Part No.	Type
F solenoid coils			
	12 V DC	34410	MSFG-12-OD
	24 V DC and 42 V AC, 50 ... 60 Hz	34411	MSFG-24/42-50/60-OD
	42 V DC	34413	MSFG-42-OD
	24 V AC	34415	MSFW-24-50/60-OD
	48 V AC, 50 ... 60 Hz	34418	MSFW-48-50/60-OD
	110 V AC, 50 ... 60 Hz and 120 V AC, 60 Hz	34420	MSFW-110-50/60-OD
	230 V AC, 50 ... 60 Hz and 240 V AC, 60 Hz	34422	MSFW-230-50/60-OD
	240 V AC, 50 ... 60 Hz	34424	MSFW-240-50/60-OD

Ordering data – Plug sockets/plug sockets with cable for F solenoid coils				
	Voltage	Cable length [m]	LED	Part No. Type
Plug socket without cable				
	–	–	–	34431 MSSD-F
	–	–	–	539710 MSSD-F-M16
Plug socket without cable with insulation displacement technology				
	–	–	–	192746 MSSD-F-S-M16
Plug socket with cable				
	24 V DC	2.5	■	30935 KMF-1-24DC-2,5-LED
		5	■	30937 KMF-1-24DC-5-LED
		10	■	193458 KMF-1-24DC-10-LED
	Up to 240 V	2.5	–	30936 KMF-1-230AC-2,5
		5	–	30938 KMF-1-230AC-5

Ordering data – Illuminating seal		Technical data → Internet: mf-ld	
	Voltage	Part No.	Type
For F solenoid coils			
	12 ... 24 V DC	19143	MF-LD-12-24DC
	230 V DC/V AC	19144	MF-LD-230AC

Ordering data – Plate				
	Description	Pneumatic connection	Part No.	Type
For wide solenoid coils				
	As spacer when using wider solenoid coils from other manufacturers (thickness: 6.35 mm)	For 3/2-way valves	G1/8	541667 MPL-TC-3-18
			G1/4	541669 MPL-TC-3-14
		For 5/2-way valves	G1/8	541668 MPL-TC-5-18
			G1/4	541670 MPL-TC-5-14

Product Range and Company Overview

A Complete Suite of Automation Services

Our experienced engineers provide complete support at every stage of your development process, including: conceptualization, analysis, engineering, design, assembly, documentation, validation, and production.



Custom Automation Components
Complete custom engineered solutions



Custom Control Cabinets
Comprehensive engineering support and on-site services



Complete Systems
Shipment, stocking and storage services

The Broadest Range of Automation Components

With a comprehensive line of more than 30,000 automation components, Festo is capable of solving the most complex automation requirements.



Electromechanical
Electromechanical actuators, motors, controllers & drives



Pneumatics
Pneumatic linear and rotary actuators, valves, and air supply



PLCs and I/O Devices
PLC's, operator interfaces, sensors and I/O devices

Supporting Advanced Automation... As No One Else Can!

Festo is a leading global manufacturer of pneumatic and electromechanical systems, components and controls for industrial automation, with more than 12,000 employees in 56 national headquarters serving more than 180 countries. For more than 80 years, Festo has continuously elevated the state of manufacturing with innovations and optimized motion control solutions that deliver higher performing, more profitable automated manufacturing and processing equipment. Our dedication to the advancement of automation extends beyond technology to the education and development of current and future automation and robotics designers with simulation tools, teaching programs, and on-site services.

Quality Assurance, ISO 9001 and ISO 14001 Certifications

Festo Corporation is committed to supply all Festo products and services that will meet or exceed our customers' requirements in product quality, delivery, customer service and satisfaction.

To meet this commitment, we strive to ensure a consistent, integrated, and systematic approach to management that will meet or exceed the requirements of the ISO 9001 standard for Quality Management and the ISO 14001 standard for Environmental Management.



© Copyright 2008, Festo Corporation. While every effort is made to ensure that all dimensions and specifications are correct, Festo cannot guarantee that publications are completely free of any error, in particular typing or printing errors. Accordingly, Festo cannot be held responsible for the same. For Liability and Warranty conditions, refer to our "Terms and Conditions of Sale", available from your local Festo office. All rights reserved. No part of this publication may be reproduced, distributed, or transmitted in any form or by any means, electronic, mechanical, photocopying or otherwise, without the prior written permission of Festo. All technical data subject to change according to technical update.



Printed on recycled paper at New Horizon Graphic, Inc., FSC certified as an environmentally friendly printing plant.

Festo North America

Festo Regional Contact Center

5300 Explorer Drive
Mississauga, Ontario L4W 5G4
Canada

USA Customers:

For ordering assistance,

Call: 1.800.99.FESTO (1.800.993.3786)

Fax: 1.800.96.FESTO (1.800.963.3786)

Email: customer.service@us.festo.com

For technical support,

Call: 1.866.GO.FESTO (1.866.463.3786)

Fax: 1.800.96.FESTO (1.800.963.3786)

Email: product.support@us.festo.com

Canadian Customers:

Call: 1.877.GO.FESTO (1.877.463.3786)

Fax: 1.877.FX.FESTO (1.877.393.3786)

Email: festo.canada@ca.festo.com

USA Headquarters

Festo Corporation
395 Moreland Road
P.O. Box 18023
Hauppauge, NY 11788, USA
www.festo.com/us

USA Sales Offices

Appleton

North 922 Tower View Drive, Suite N
Greenville, WI 54942, USA

Boston

120 Presidential Way, Suite 330
Woburn, MA 01801, USA

Chicago

1441 East Business Center Drive
Mt. Prospect, IL 60056, USA

Dallas

1825 Lakeway Drive, Suite 600
Lewisville, TX 75057, USA

Detroit – Automotive Engineering Center

2601 Cambridge Court, Suite 320
Auburn Hills, MI 48326, USA

New York

395 Moreland Road
Hauppauge, NY 11788, USA

Silicon Valley

4935 Southfront Road, Suite F
Livermore, CA 94550, USA

United States



USA Headquarters, East: Festo Corp., 395 Moreland Road, Hauppauge, NY 11788

Phone: 1.631.435.0800; Fax: 1.631.435.8026;

Email: info@festo-usa.com

www.festo.com/us

Canada



Headquarters: Festo Inc., 5300 Explorer Drive, Mississauga, Ontario L4W 5G4

Phone: 1.905.624.9000; Fax: 1.905.624.9001;

Email: festo.canada@ca.festo.com

www.festo.ca

Mexico



Headquarters: Festo Pneumatic, S.A., Av. Ceylán 3, Col. Tequesquahuac,
54020 Tlalnepantla, Edo. de México

Phone: 011 52 [55] 53 21 66 00; Fax: 011 52 [55] 53 21 66 65;

Email: festo.mexico@mx.festo.com

www.festo.com/mx

Central USA

Festo Corporation
1441 East Business
Center Drive
Mt. Prospect, IL 60056, USA
Phone: 1.847.759.2600
Fax: 1.847.768.9480



Western USA

Festo Corporation
4935 Southfront Road,
Suite F
Livermore, CA 94550, USA
Phone: 1.925.371.1099
Fax: 1.925.245.1286



Festo Worldwide

Argentina Australia Austria Belarus Belgium Brazil Bulgaria Canada Chile China Colombia Croatia Czech Republic Denmark
Estonia Finland France Germany Great Britain Greece Hong Kong Hungary India Indonesia Iran Ireland Israel Italy Japan Latvia
Lithuania Malaysia Mexico Netherlands New Zealand Norway Peru Philippines Poland Romania Russia Serbia Singapore
Slovakia Slovenia South Africa South Korea Spain Sweden Switzerland Taiwan Thailand Turkey Ukraine United States Venezuela

www.festo.com