

## Rotary distributors GF

**FESTO**



# Rotary distributors GF

Product range overview and type codes

FESTO

## General

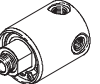

The rotary distributors GF with single or multiple rotary through-feed transmit media from stationary sources to rotating machine parts.

The compact and sturdy design with double bearing makes the rotary distributors a reliable means of protecting your media supply against

mechanical loads.

In the case of the rotary distributors with multiple rotary through-feed, the

medium can be flexibly supplied and returned through the radial and axial inlets and outlets.

Product range overview						
Design	Version	Type	Pneumatic connection		Max. rotational speed	➔ Page/ Internet
			Inlet	Outlet	[rpm]	
Single rotary through-feed	1 inlet, 4 outlets					
		GF	G1/8	M5	3,000	3
			G1/4	G1/8		
			G1/2	G1/4	2,500	
Multiple rotary through-feed	2 separate inlets and outlets					
		GF	G1/8	G1/8	300	5
			G1/4	G1/4		
			G1/2	G1/2		

## Type codes

Single rotary through-feed

		GF	—	1/8	—	M5
<b>Basic function</b>						
GF	Single rotary distributor					
<b>Pneumatic connection, inlet</b>						
1/8	G1/8 thread					
1/4	G1/4 thread					
1/2	G1/2 thread					
<b>Pneumatic connection, outlet</b>						
M5	M5 thread					
1/8	G1/8 thread					
1/4	G1/4 thread					

Multiple rotary through-feed

		GF	—	1/8	—	2	
<b>Basic function</b>		GF	Multiple rotary distributor				
<b>Pneumatic connection</b>							
1/8	G1/8 thread						
1/4	G1/4 thread						
1/2	G1/2 thread						
<b>Number of air through-feeds</b>							
2	Air through-feeds						

# Rotary distributors GF

FESTO

Technical data – Single rotary through-feed

## Single rotary through-feed

1 inlet, 4 outlets

Temperature range

–10 ... +80 °C

Pressure

–0.95 ... +10 bar



General technical data			
Pneumatic connection 1	G1/8	G1/4	G1/2
Pneumatic connection 2	M5	G1/8	G1/4
Mounting position	Any		
Max. rotational speed [rpm]	3,000	3,000	2,500
Max. radial force [N]	150	150	250
Max. axial force [N]	50	50	50
Max. tightening torque [Nm]	10	15	40

Operating and environmental conditions	
Operating pressure for entire temperature range [bar]	–0.95 ... +10
Operating medium	Compressed air according to ISO 8573-1:2010 [7:–:–]
Note on operating/pilot medium	Lubricated operation possible
Ambient temperature [°C]	–10 ... +80
Corrosion resistance class CRC <sup>1)</sup>	1

- 1) Corrosion resistance class 1 according to Festo standard 940 070  
Components subject to low corrosion stress. Transport and storage protection. Parts that do not have primarily decorative surface requirements, e.g. in internal areas that are not visible or behind covers.

## Note

When using speeds above 1,000 rpm, only lubricated compressed air should be used. If no lubricated compressed air is available, the depot lubrication system must be replaced every 300 operating hours.

Materials	
Housing	Brass
Shaft	High-alloy steel

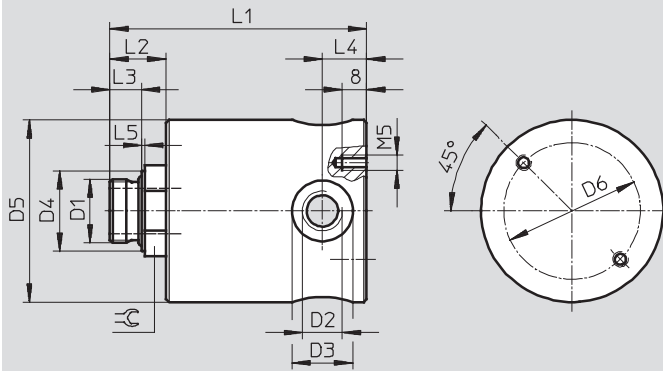
# Rotary distributors GF

Technical data – Single rotary through-feed

**FESTO**

## Dimensions

Download CAD Data → [www.festo.com/us/cad](http://www.festo.com/us/cad)



Inlet connection D1	Nominal size [mm]	Outlet connection D2	D3 Ø	D4 Ø	D5 Ø -1	D6 Ø	L1	L2	L3	L4	L5	≡
G $\frac{1}{8}$	4.1	M5	9	14.5	40	30	64	15.5	6.5	7	1	17
G $\frac{1}{4}$	8	G $\frac{1}{8}$	16	17	40	30	65.5	17	8	9.5	1.5	17
G $\frac{1}{2}$	15	G $\frac{1}{4}$	20	26.5	60	45	90	24	10.5	14.5	1.5	27

Ordering data						
Pneumatic connection		Standard flow rate qn at 6 bar → 0 bar		Weight [g]	Part No.	Type
		1 → 2.1 [l/min]	1 → 2.X open [l/min]			
1	2					
G $\frac{1}{8}$	M5	490	2,250	400	539290	GF-1/8-M5
G $\frac{1}{4}$	G $\frac{1}{8}$	1,730	4,050	370	539291	GF-1/4-1/8
G $\frac{1}{2}$	G $\frac{1}{4}$	4,050	14,130	1,190	539292	GF-1/2-1/4

# Rotary distributors GF

FESTO

Technical data – Multiple rotary through-feed

**Multiple rotary through-feed**  
2 separate inlets and outlets

Temperature range  
–10 ... +80 °C  
Pressure  
–0.95 ... +10 bar



General technical data			
Pneumatic connection 1	G $\frac{1}{8}$	G $\frac{1}{4}$	G $\frac{1}{2}$
Pneumatic connection 2	G $\frac{1}{8}$	G $\frac{1}{4}$	G $\frac{1}{2}$
Mounting position	Any		
Max. rotational speed [rpm]	300		
Max. radial force [N]	250	300	400
Max. axial force [N]	100	100	100
Max. tightening torque [Nm]	10	15	40

Operating and environmental conditions	
Operating pressure for entire temperature range [bar]	–0.95 ... +10
Operating medium	Compressed air according to ISO 8573-1:2010 [7:--:-]
Note on operating/pilot medium	Lubricated operation possible
Ambient temperature [°C]	–10 ... +80
Corrosion resistance class CRC <sup>1)</sup>	1

1) Corrosion resistance class 1 according to Festo standard 940 070  
Components subject to low corrosion stress. Transport and storage protection. Parts that do not have primarily decorative surface requirements, e.g. in internal areas that are not visible or behind covers.

Materials	
Housing	Brass
Shaft	High-alloy steel

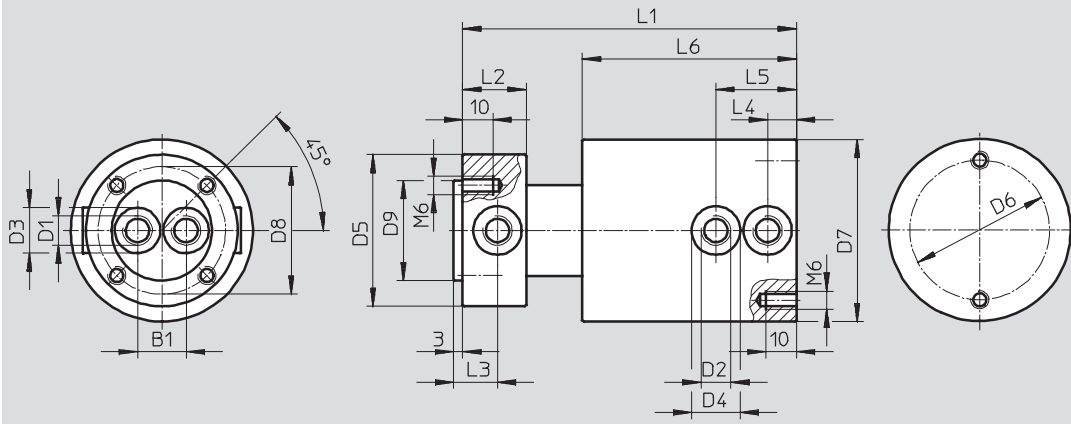
# Rotary distributors GF

Technical data – Multiple rotary through-feed

FESTO

## Dimensions

Download CAD Data → [www.festo.com/us/cad](http://www.festo.com/us/cad)



Inlet connection D1	Nominal size [mm]	Outlet connection D2	B1	D3 Ø	D4 Ø	D5 Ø	D6 Ø	D7 Ø -1	D8 Ø	D9 Ø f7	L1	L2	L3	L4	L5	L6
G $\frac{1}{8}$	6	G $\frac{1}{8}$	16	15	16	50	46	60	42	33	113	21	14.5	9.5	26.5	70.5
G $\frac{1}{4}$	8	G $\frac{1}{4}$	20	19	20	65	46	70	50	40	131	28	19.5	13.5	34.5	81.5
G $\frac{1}{2}$	15	G $\frac{1}{2}$	30	28	28	90	65	95	78	65	174	39	25.5	17.5	49.5	112

## Ordering data

Pneumatic connection		Standard nominal flow rate qnN at 6 bar → 5 bar		Weight [g]	Part No.	Type
1	2	1.1 → 2.1 [l/min]	1.2 → 2.2 [l/min]			
G $\frac{1}{8}$	G $\frac{1}{8}$	720	1,050	1,770	539287	GF- $\frac{1}{8}$ -2
G $\frac{1}{4}$	G $\frac{1}{4}$	1,250	2,020	2,950	539288	GF- $\frac{1}{4}$ -2
G $\frac{1}{2}$	G $\frac{1}{2}$	4,440	7,380	7,380	539289	GF- $\frac{1}{2}$ -2

## Product Range and Company Overview

### A Complete Suite of Automation Services

Our experienced engineers provide complete support at every stage of your development process, including: conceptualization, analysis, engineering, design, assembly, documentation, validation, and production.



**Custom Automation Components**  
Complete custom engineered solutions



**Custom Control Cabinets**  
Comprehensive engineering support and on-site services



**Complete Systems**  
Shipment, stocking and storage services

### The Broadest Range of Automation Components

With a comprehensive line of more than 30,000 automation components, Festo is capable of solving the most complex automation requirements.



**Electromechanical**  
Electromechanical actuators, motors, controllers & drives



**Pneumatics**  
Pneumatic linear and rotary actuators, valves, and air supply



**PLCs and I/O Devices**  
PLC's, operator interfaces, sensors and I/O devices

### Supporting Advanced Automation... As No One Else Can!

Festo is a leading global manufacturer of pneumatic and electromechanical systems, components and controls for industrial automation, with more than 12,000 employees in 56 national headquarters serving more than 180 countries. For more than 80 years, Festo has continuously elevated the state of manufacturing with innovations and optimized motion control solutions that deliver higher performing, more profitable automated manufacturing and processing equipment. Our dedication to the advancement of automation extends beyond technology to the education and development of current and future automation and robotics designers with simulation tools, teaching programs, and on-site services.

### Quality Assurance, ISO 9001 and ISO 14001 Certifications

Festo Corporation is committed to supply all Festo products and services that will meet or exceed our customers' requirements in product quality, delivery, customer service and satisfaction.

To meet this commitment, we strive to ensure a consistent, integrated, and systematic approach to management that will meet or exceed the requirements of the ISO 9001 standard for Quality Management and the ISO 14001 standard for Environmental Management.



© Copyright 2008, Festo Corporation. While every effort is made to ensure that all dimensions and specifications are correct, Festo cannot guarantee that publications are completely free of any error, in particular typing or printing errors. Accordingly, Festo cannot be held responsible for the same. For Liability and Warranty conditions, refer to our "Terms and Conditions of Sale", available from your local Festo office. All rights reserved. No part of this publication may be reproduced, distributed, or transmitted in any form or by any means, electronic, mechanical, photocopying or otherwise, without the prior written permission of Festo. All technical data subject to change according to technical update.



Printed on recycled paper at New Horizon Graphic, Inc., FSC certified as an environmentally friendly printing plant.

# Festo North America

## Festo Regional Contact Center

5300 Explorer Drive  
Mississauga, Ontario L4W 5G4  
Canada

### USA Customers:

For ordering assistance,

**Call:** 1.800.99.FESTO (1.800.993.3786)

**Fax:** 1.800.96.FESTO (1.800.963.3786)

**Email:** [customer.service@us.festo.com](mailto:customer.service@us.festo.com)

For technical support,

**Call:** 1.866.GO.FESTO (1.866.463.3786)

**Fax:** 1.800.96.FESTO (1.800.963.3786)

**Email:** [product.support@us.festo.com](mailto:product.support@us.festo.com)

### Canadian Customers:

**Call:** 1.877.GO.FESTO (1.877.463.3786)

**Fax:** 1.877.FX.FESTO (1.877.393.3786)

**Email:** [festo.canada@ca.festo.com](mailto:festo.canada@ca.festo.com)

## USA Headquarters

Festo Corporation  
395 Moreland Road  
P.O. Box 18023  
Hauppauge, NY 11788, USA  
[www.festo.com/us](http://www.festo.com/us)

## USA Sales Offices

### Appleton

North 922 Tower View Drive, Suite N  
Greenville, WI 54942, USA

### Boston

120 Presidential Way, Suite 330  
Woburn, MA 01801, USA

### Chicago

1441 East Business Center Drive  
Mt. Prospect, IL 60056, USA

### Dallas

1825 Lakeway Drive, Suite 600  
Lewisville, TX 75057, USA

### Detroit – Automotive Engineering Center

2601 Cambridge Court, Suite 320  
Auburn Hills, MI 48326, USA

### New York

395 Moreland Road  
Hauppauge, NY 11788, USA

### Silicon Valley

4935 Southfront Road, Suite F  
Livermore, CA 94550, USA

## United States



**USA Headquarters, East:** Festo Corp., 395 Moreland Road, Hauppauge, NY 11788

Phone: 1.631.435.0800; Fax: 1.631.435.8026;

Email: [info@festo-usa.com](mailto:info@festo-usa.com)

[www.festo.com/us](http://www.festo.com/us)

## Canada



**Headquarters:** Festo Inc., 5300 Explorer Drive, Mississauga, Ontario L4W 5G4

Phone: 1.905.624.9000; Fax: 1.905.624.9001;

Email: [festo.canada@ca.festo.com](mailto:festo.canada@ca.festo.com)

[www.festo.ca](http://www.festo.ca)

## Mexico



**Headquarters:** Festo Pneumatic, S.A., Av. Ceylán 3, Col. Tequesquahuac,  
54020 Tlalneapantla, Edo. de México

Phone: 011 52 [55] 53 21 66 00; Fax: 011 52 [55] 53 21 66 65;

Email: [festo.mexico@mx.festo.com](mailto:festo.mexico@mx.festo.com)

[www.festo.com/mx](http://www.festo.com/mx)

## Central USA

Festo Corporation  
1441 East Business  
Center Drive  
Mt. Prospect, IL 60056, USA  
Phone: 1.847.759.2600  
Fax: 1.847.768.9480



## Western USA

Festo Corporation  
4935 Southfront Road,  
Suite F  
Livermore, CA 94550, USA  
Phone: 1.925.371.1099  
Fax: 1.925.245.1286



## Festo Worldwide

Argentina Australia Austria Belarus Belgium Brazil Bulgaria Canada Chile China Colombia Croatia Czech Republic Denmark  
Estonia Finland France Germany Great Britain Greece Hong Kong Hungary India Indonesia Iran Ireland Israel Italy Japan Latvia  
Lithuania Malaysia Mexico Netherlands New Zealand Norway Peru Philippines Poland Romania Russia Serbia Singapore  
Slovakia Slovenia South Africa South Korea Spain Sweden Switzerland Taiwan Thailand Turkey Ukraine United States Venezuela

[www.festo.com](http://www.festo.com)