

## Compact Vision System SBOC-M/SBOI-M

**FESTO**



# Compact Vision System SBOC-M/SBOI-M

Key features

FESTO

## Problem description

Modern automation systems are for the most part designed for high production speeds which the human eye has trouble following.

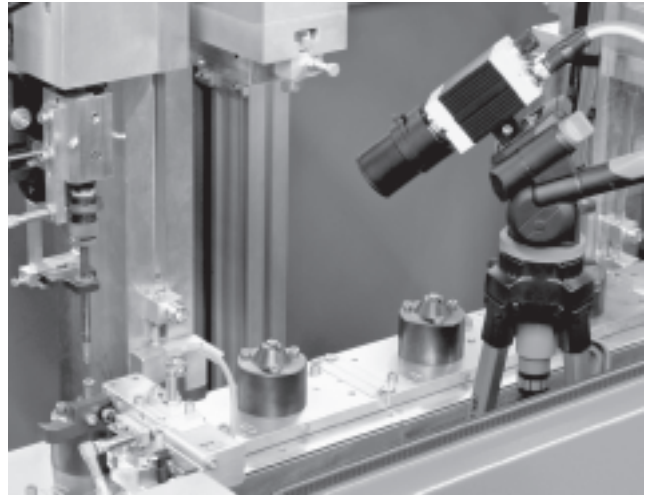
Disadvantage of this high speed: Fitters and service employees cannot detect errors in the motion sequence and their causes straight away.

It is also becoming increasingly difficult to set the system parameters to their optimum values.

## Typical applications

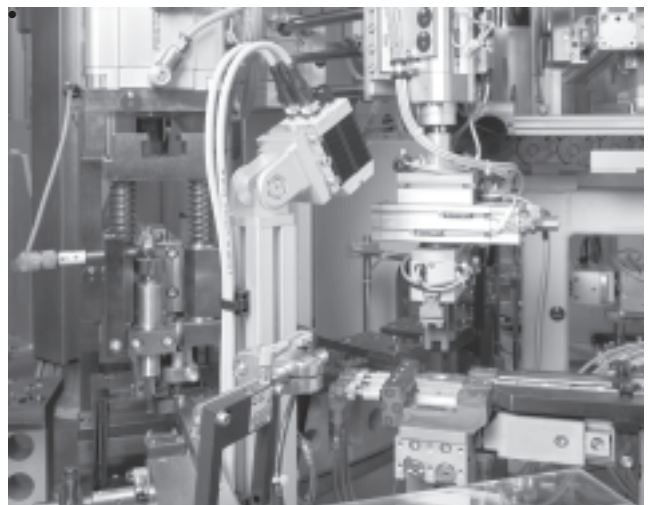
Mobile deployment of the high-speed camera for service and commissioning to increase the productivity and availability of automation systems

- Cycle time reduction through pinpointing of idle periods in motion sequences
- Optimum harmonisation of the travel times of individual axes in multi-axis systems, localisation of critical movements
- Time-synchronised visualisation of movement processes from several sides on a PC for greater ease of handling
- Localisation of unwanted vibrations which have a negative effect on the repetition accuracy of movement processes and can cause premature material fatigue

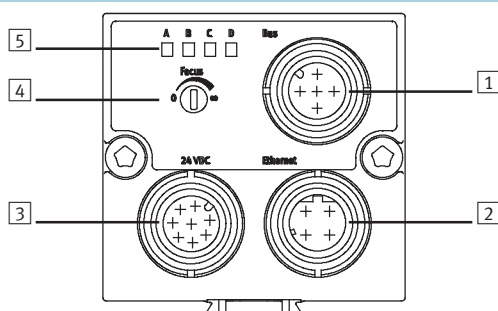


Stationary mounting of the high-speed camera to increase the availability of automation systems

- Continuous recording of processes in the ring buffer of the camera
- If a fault occurs, recording is stopped by an external signal. The case history of the fault is then stored in the camera, thus permitting an analysis of the cause



## Interfaces



- 1 Bus connection
- 2 Ethernet connection
- 3 Power supply and inputs/outputs
- 4 Adjusting screw for focus

- 5 Status LEDs:  
A Operating system  
B Ethernet traffic  
C Recording  
D Recording status

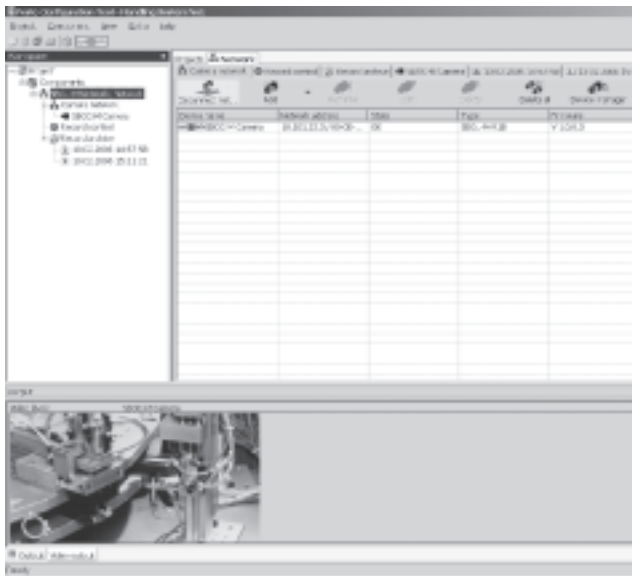
# Compact Vision System SBOC-M/SBOI-M

Key features

FESTO

## FCT software with SBO.. Network plug-in

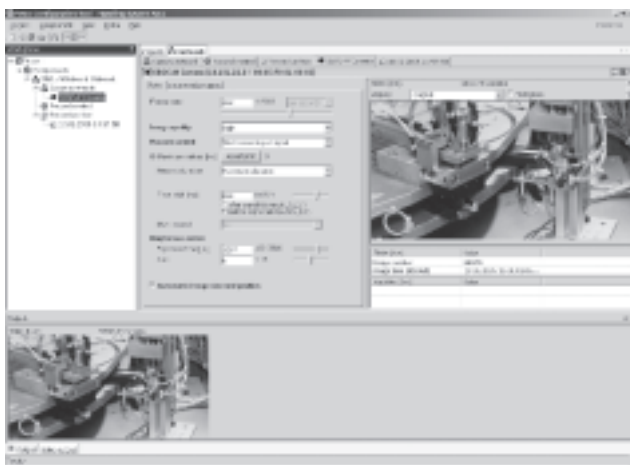
### Configuring a camera network



The "SBO..-M Network" is a plug-in for the Festo configuration tool (FCT for short). It provides the following functions:

- Configuration and commissioning of a camera network with any desired number of Compact Vision Systems of the type SBOC-M or SBOI-M
- Creation of time-synchronised recordings using all devices in the camera network in order to record a scene from various angles, for example

### Setting the camera



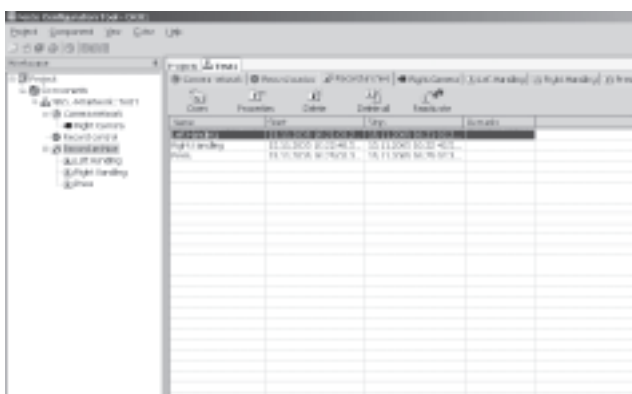
Using the live pictures from the camera, the lens can be set and parameters such as exposure time, frames per second, recording duration and picture quality, for example, adjusted.

With the parameters you can also define what is to happen when a trigger signal (edge change of an external 24 V signal) occurs:

- Start the recording
- Stop the recording
- Record only one picture

Time delays between trigger signal and start of recording or stop recording as well as recording several films or pictures in the camera memory (multi-recording) can also be determined in a user-friendly manner.

### Recording control



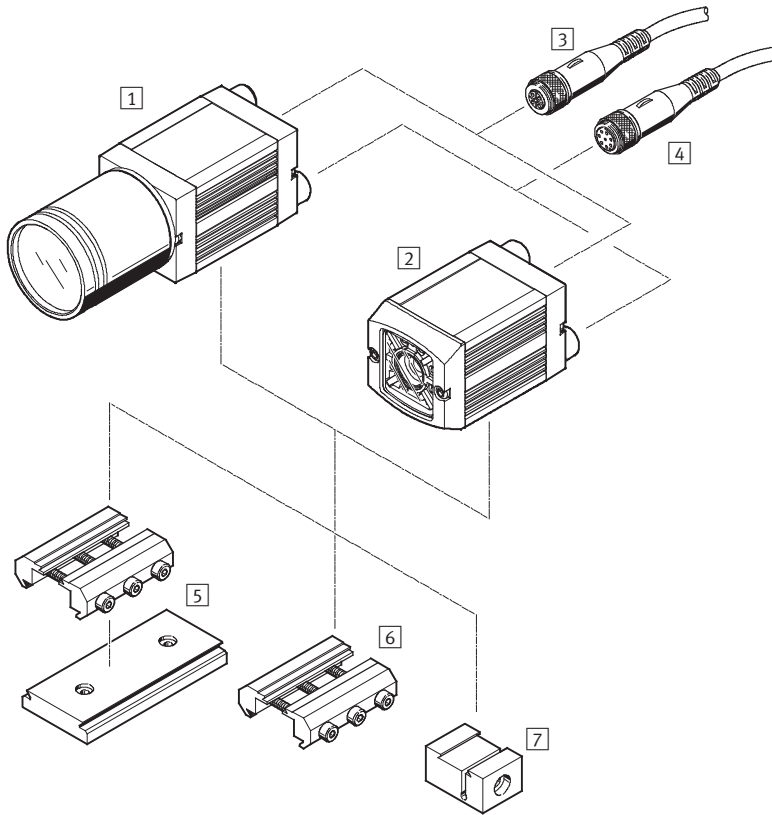
Recording can be started once the camera has been set up. You can choose whether the camera should wait for the occurrence of an external trigger condition, start recording directly following initialisation or store the pictures sent via Ethernet on a PC without buffering them in the camera. The PC can be removed once recording has been started in "Wait for trigger

signal" mode. The camera operates automatically and waits for the trigger condition to occur. Recorded sequences are stored in the internal memory of the respective camera and can be transmitted to the FCT software once a connection has been re-established with a PC. The sequences are archived and can be analysed on the PC.

# Compact Vision System SBOC-M/SBOI-M

Peripherals overview

FESTO



Accessories		Brief description	→ Page/Internet
Compact Vision System			
1	SBOC-M-R1B	For standard lens with C mount connection	6
2	SBOI-M-R1B	With integrated lens and light	
–	SBOA-M-SYSTAINER	Systainer with Compact Vision System SBOC-M-R1B and an extensive range of accessories	9
Cable with socket			
3	SBOA-K30E-M12S	Ethernet diagnostic cable	11
4	SIM-M12-8GD-...-PU	For supplying the operating voltage	
Lens			
–	SASF-C-L-F...	Focal distance 6 ... 35 mm	10
Mounting components			
5	Adapter kit SBOA-HMSV-39	With screw-on adapter plate	8
6	Adapter kit SBOA-HMSV-40	Without screw-on adapter plate	
7	Adapter kit SBOA-HMSV-41	With female thread G¼ for mounting on commercially available tripods	
–	Adapter SBOL-C-5	5 mm spacer ring (CS mount to C mount)	8

# Compact Vision System SBOC-M/SBOI-M

Type codes

**FESTO**

		SBO	C	-	M	-	R1	B
<b>Function</b>								
SBO	Compact Vision System							
<b>Design</b>								
C	For standard lens with C mount or CS mount <sup>1)</sup> connection							
I	Integrated lens							
<b>Equipment</b>								
M	With integrated application-specific software							
<b>Sensor resolution</b>								
R1	640 x 480 pixels, VGA resolution							
<b>Sensor type</b>								
B	Monochrome							

1) CS mount without protective tube.

# Compact Vision System SBOC-M/SBOI-M

FESTO

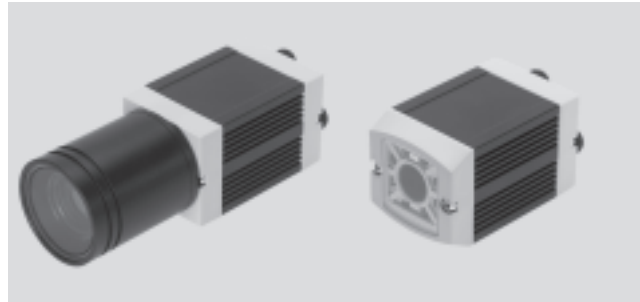
Technical data

Voltage

24 V DC

Temperature range

-10 ... +50 °C



General technical data			
Type		SBOC-M	SBOI-M
Sensor resolution	[pixels]	640x480	
Exposure time	[ms]	0.04 ... 1,000	
Frame rate (full image)	[fps]	185	
Sensor type		Monochrome	
Lens mounting		C mount CS mount <sup>1)</sup>	Integrated lens
Operating distance	[mm]	Dependent on the lens selected	22 ... 1,000
Field of vision	[mm]	Dependent on the lens selected	14x10 ... 520x390

1) Without protective tube.

Electrical data			
Type		SBOC-M	SBOI-M
Nominal operating voltage	[V DC]	24	
Permissible voltage fluctuations	[%]	±10	
Current consumption with load-free outputs	[mA]	120	
Max. residual current	[A]	1.5 at the 24 V outputs	
Protection class		IP65, IP67 <sup>1)</sup>	IP65, IP67
Ethernet interface			
Bus interface		IEEE802.3U (100BaseT)	
Connection technology		Plug M12	
Transmission speed	[Mbps]	100	
Supported protocols		TCP/IP	

1) Only in combination with protective tube (included in scope of delivery).

Operating and environmental conditions			
Ambient temperature	[°C]	-10 ... +50	
Storage temperature	[°C]	-10 ... +60	
Ambient conditions		Screened from extreme external light sources Cleanest possible ambient air	
CE mark		To EU EMC Directive	
Certification		c UL us - Recognized (OL) C-Tick	

# Compact Vision System SBOC-M/SBOI-M

**FESTO**

Technical data

Materials	
Housing	Anodised aluminium
Cap	Acrylic butadiene styrene, glass fibre reinforced
Note on materials	Free of copper and PTFE
	RoHS-compliant

Weight [g]		
Lens mounting	C mount/CS mount <sup>1)</sup>	Integrated lens
Type	SBOC-M	SBOI-M
Compact Vision System	182	184

1) CS mount without protective tube.

Dimensions	
C mount/CS mount <sup>1)</sup> SBOC-M	

Technical drawings of the SBOC-M camera module. The front view shows a square housing with a lens in the center. Dimensions include a 45mm width and height, a 24.65mm distance from the top edge to the lens center, and a 13.91mm distance from the bottom edge to the lens center. The side view shows a total length of 139.4mm, with a 50mm section for the lens mount and a 71mm section for the body. A protective tube (4) is shown extending from the front. The top view shows a 42.2mm distance between the top connections and a 18.8mm distance between the bottom connections. A legend identifies: 1) Power supply and inputs/outputs, 2) Ethernet connection, 3) Bus connection, and 4) Protective tube.

Integrated lens SBOI-M	
------------------------	--

Technical drawings of the SBOI-M camera module. The front view shows a square housing with a lens in the center. Dimensions include a 45mm width and height, a 30.2mm distance from the top edge to the lens center, and a 13.91mm distance from the bottom edge to the lens center. The side view shows a total length of 83.7mm, with a 70.9mm section for the body. The top view shows a 42.2mm distance between the top connections and a 18.8mm distance between the bottom connections. A legend identifies: 1) Power supply and inputs/outputs, 2) Ethernet connection, and 3) Bus connection.

1) CS mount without protective tube.

Ordering data		
	Part No.	Type
For standard lens with C mount or CS mount <sup>1)</sup> connection	541398	SBOC-M-R1B
Integrated lens	541395	SBOI-M-R1B

1) CS mount without protective tube.

# Compact Vision System SBOC-M/SBOI-M

Accessories

FESTO

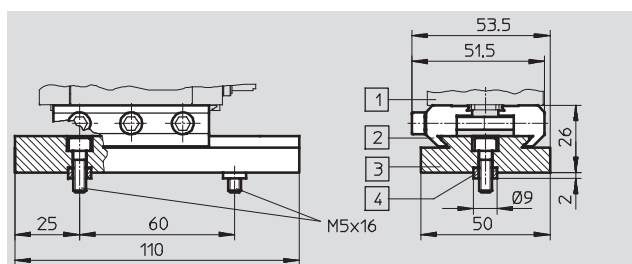
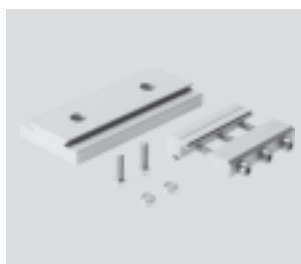
## Adapter kit

### SBOA-HMSV-39

with screw-on adapter plate

Material:

Anodised wrought aluminium alloy



Ordering data		
	Part No.	Type
Adapter kit	541599	SBOA-HMSV-39

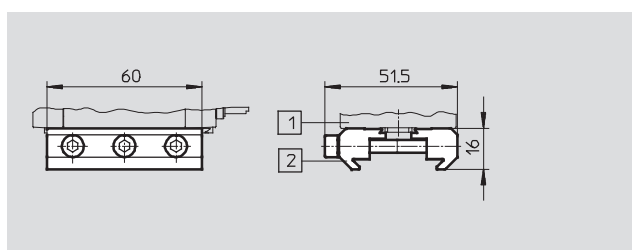
## Adapter kit

### SBOA-HMSV-40

without screw-on adapter plate

Material:

Anodised wrought aluminium alloy



Ordering data		
	Part No.	Type
Adapter kit	541600	SBOA-HMSV-40

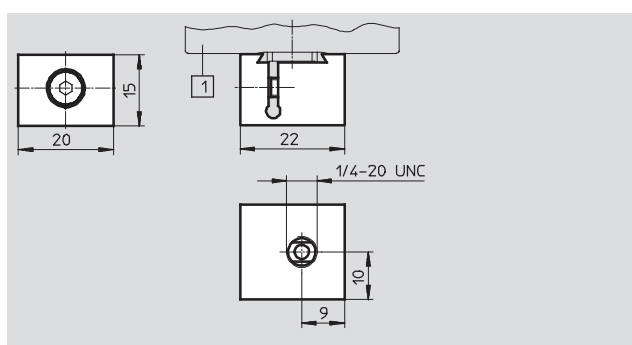
## Adapter kit

### SBOA-HMSV-41

with female thread G $\frac{1}{4}$  for mounting on commercially available tripods

Material:

Anodised wrought aluminium alloy



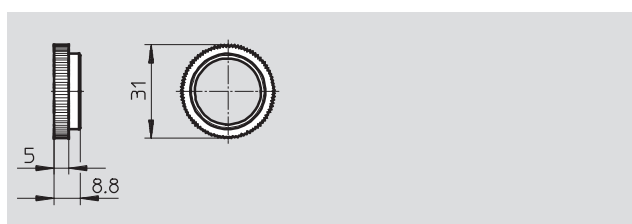
Ordering data		
	Part No.	Type
Adapter kit	542140	SBOA-HMSV-41

## Adapter SBOL-C-5

5 mm spacer ring  
(CS mount to C mount)

Material:

Anodised wrought aluminium alloy



Ordering data		
	Part No.	Type
Adapter	541601	SBOL-C-5



## Compact Vision System SBOC-M/SBOI-M

Accessories

### Vision system

#### SBOA-M-SYSTAINER

Systainer with Compact Vision System  
SBOC-M-R1B and accessories for  
mains voltage 230 V

Note on materials:  
Contains PWIS (paint wetting  
impairment substances)



Ordering data			
Contents	Pieces	Part No.	Type
Compact Vision System SBOC-M-R1B, without protective tube	1	<b>543408</b>	<b>SBOA-M-SYSTAINER</b>
Zoom lens, focal depth 10 ... 40 mm, CS mount	1		
Adapter kit SBOA-HMSV-41 for mounting on commercially available tripods	1		
Tripod for camera and lighting	2		
Ethernet diagnostic cable SBOA-K30E-M12S	1		
Crossover patch cable	1		
Coupler, RJ45	1		
System light 1,000 W/75 h, with tilting head and four-way folding frame	1		
Spare light bulb, U-shaped halogen lamp, 1,000 W/75 h, 230 V	1		
Manual cable drum	1		
Trigger with pushbutton and extension cable	1		
Power supply for camera/power supply unit	1		
CD-ROM with FCT configuration package and documentation	1		


### Vision system

#### SBOA-M-SYSTAINER-110V

Systainer with Compact Vision System  
SBOC-M-R1B and accessories for  
mains voltage 110 V

Note on materials:  
Contains PWIS (paint wetting  
impairment substances)



Ordering data			
Contents	Pieces	Part No.	Type
Compact Vision System SBOC-M-R1B, without protective tube	1	<b>572909</b>	<b>SBOA-M-SYSTAINER-110V</b> 
Zoom lens, focal depth 10 ... 40 mm, CS mount	1		
Adapter kit SBOA-HMSV-41 for mounting on commercially available tripods	1		
Tripod for camera and lighting	2		
Ethernet diagnostic cable SBOA-K30E-M12S	1		
Crossover patch cable	1		
Coupler, RJ45	1		
System light incl. plug for USA, 850 W/75 h, with tilting head and four-way folding frame	1		
Spare light bulb, U-shaped halogen lamp, 850 W/110 V	1		
Trigger with pushbutton and extension cable	1		
Power supply for camera/power supply unit with plug-in adapter for USA	1		
CD-ROM with FCT configuration package and documentation	1		

## Compact Vision System SBOC-M/SBOI-M

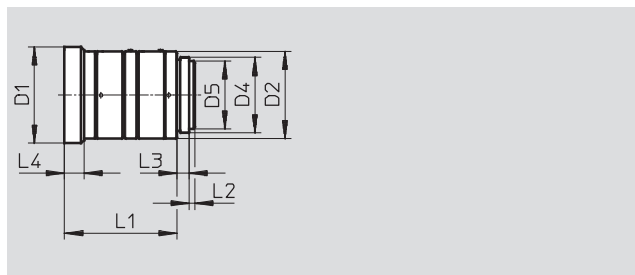
Accessories

**FESTO**

### Lens SASF-C-L-F6

Focal depth 6 mm

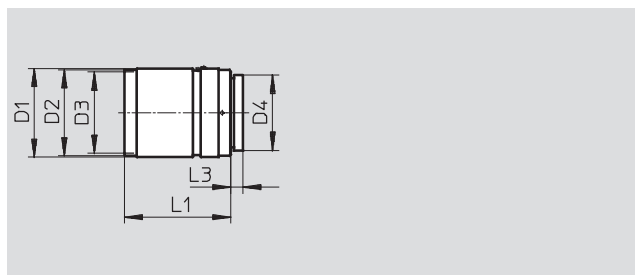
Note on materials:  
Contains PWIS (paint wetting  
impairment substances)  
RoHS-compliant



### Lens SASF-C-L-F16

Focal depth 16 mm

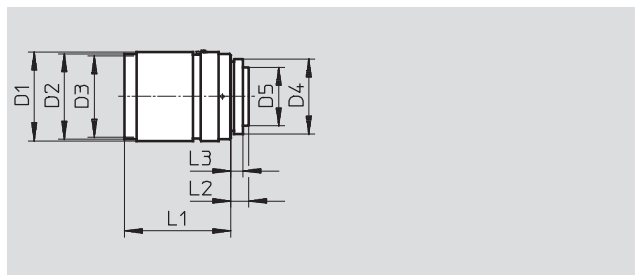
Note on materials:  
Contains PWIS (paint wetting  
impairment substances)  
RoHS-compliant











### Lens SASF-C-L-F12/25/35

Focal depth 12/25/35 mm

Note on materials:  
Contains PWIS (paint wetting  
impairment substances)  
RoHS-compliant




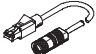
Dimensions									
Type	D1 Ø	D2 Ø	D3 Ø	D4	D5 Ø	L1	L2	L3	L4
<b>SASF-C-L-F6</b>	32	29	–	1-32UN	22.5	37.5	1.9	4	6.5
<b>SASF-C-L-F16</b>	29.5	28.5	27, P=0.5	1-32UN-2A	–	33.2	–	4	–
<b>SASF-C-L-F12</b>	29.5	28.5	27, P=0.5	1-32UN-2A	16.5	28.5	7.1	4	–
<b>SASF-C-L-F25</b>						32	6.9		
<b>SASF-C-L-F35</b>						19.5	35.4		

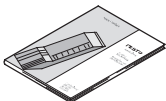


Ordering data – Lenses					Technical data → Internet: sasf-c	
	Brief description	Operating distance [mm]	Focal depth [mm]	Part No.	Type	
	C mount for Compact Vision System with sensor resolution R1 and R3	≥200	6	<b>572910</b>	<b>SASF-C-L-F6</b>	
	C mount for Compact Vision System with sensor resolution R1 and R3	≥250	12	<b>572911</b>	<b>SASF-C-L-F12</b>	
	C mount for Compact Vision System with sensor resolution R1, R2 and R3	≥250	16	<b>572912</b>	<b>SASF-C-L-F16</b>	
			25	<b>572913</b>	<b>SASF-C-L-F25</b>	
		≥350	35	<b>572914</b>	<b>SASF-C-L-F35</b>	

# Compact Vision System SBOC-M/SBOI-M

Accessories

**FESTO**

Ordering data – Cable M12x1					Technical data → Internet: sim, sboa	
	Assembly	Use	Connection	Cable length [m]	Part No.	Type
Straight socket						
	Union nut M12x1	Operating voltage supply	8-pin	2	525616	SIM-M12-8GD-2-PU
				5	525618	SIM-M12-8GD-5-PU
	Union nut M12x1	Ethernet diagnostic cable	4-pin, d-coded	3	542139	SBOA-K30E-M12S

Ordering data – Documentation					Part No.	Type
	Brief description			Language		
	Description A manual in paper form is not included in the scope of delivery for the Compact Vision System			German	542122	P.BE-SBO-M-DE
				English	542123	P.BE-SBO-M-EN
	Documentation package The manual on CD-ROM is included in the scope of delivery of the Compact Vision System			German, English	542121	P.BE-SBO-M-UDOK
	Configuration package The FCT (Festo configuration tool) configuration package on CD-ROM is included in the scope of delivery of the Compact Vision System			German, English, French	539622	P.SW-FCT

## Product Range and Company Overview

### A Complete Suite of Automation Services

Our experienced engineers provide complete support at every stage of your development process, including: conceptualization, analysis, engineering, design, assembly, documentation, validation, and production.



**Custom Automation Components**  
Complete custom engineered solutions



**Custom Control Cabinets**  
Comprehensive engineering support and on-site services



**Complete Systems**  
Shipment, stocking and storage services

### The Broadest Range of Automation Components

With a comprehensive line of more than 30,000 automation components, Festo is capable of solving the most complex automation requirements.



**Electromechanical**  
Electromechanical actuators, motors, controllers & drives



**Pneumatics**  
Pneumatic linear and rotary actuators, valves, and air supply



**PLCs and I/O Devices**  
PLC's, operator interfaces, sensors and I/O devices

### Supporting Advanced Automation... As No One Else Can!

Festo is a leading global manufacturer of pneumatic and electromechanical systems, components and controls for industrial automation, with more than 12,000 employees in 56 national headquarters serving more than 180 countries. For more than 80 years, Festo has continuously elevated the state of manufacturing with innovations and optimized motion control solutions that deliver higher performing, more profitable automated manufacturing and processing equipment. Our dedication to the advancement of automation extends beyond technology to the education and development of current and future automation and robotics designers with simulation tools, teaching programs, and on-site services.

### Quality Assurance, ISO 9001 and ISO 14001 Certifications

Festo Corporation is committed to supply all Festo products and services that will meet or exceed our customers' requirements in product quality, delivery, customer service and satisfaction.

To meet this commitment, we strive to ensure a consistent, integrated, and systematic approach to management that will meet or exceed the requirements of the ISO 9001 standard for Quality Management and the ISO 14001 standard for Environmental Management.



© Copyright 2008, Festo Corporation. While every effort is made to ensure that all dimensions and specifications are correct, Festo cannot guarantee that publications are completely free of any error, in particular typing or printing errors. Accordingly, Festo cannot be held responsible for the same. For Liability and Warranty conditions, refer to our "Terms and Conditions of Sale", available from your local Festo office. All rights reserved. No part of this publication may be reproduced, distributed, or transmitted in any form or by any means, electronic, mechanical, photocopying or otherwise, without the prior written permission of Festo. All technical data subject to change according to technical update.



Printed on recycled paper at New Horizon Graphic, Inc., FSC certified as an environmentally friendly printing plant.

# Festo North America

## Festo Regional Contact Center

5300 Explorer Drive  
Mississauga, Ontario L4W 5G4  
Canada

### USA Customers:

For ordering assistance,

**Call:** 1.800.99.FESTO (1.800.993.3786)

**Fax:** 1.800.96.FESTO (1.800.963.3786)

**Email:** [customer.service@us.festo.com](mailto:customer.service@us.festo.com)

For technical support,

**Call:** 1.866.GO.FESTO (1.866.463.3786)

**Fax:** 1.800.96.FESTO (1.800.963.3786)

**Email:** [product.support@us.festo.com](mailto:product.support@us.festo.com)

### Canadian Customers:

**Call:** 1.877.GO.FESTO (1.877.463.3786)

**Fax:** 1.877.FX.FESTO (1.877.393.3786)

**Email:** [festo.canada@ca.festo.com](mailto:festo.canada@ca.festo.com)

## USA Headquarters

Festo Corporation  
395 Moreland Road  
P.O. Box 18023  
Hauppauge, NY 11788, USA  
[www.festo.com/us](http://www.festo.com/us)

## USA Sales Offices

### Appleton

North 922 Tower View Drive, Suite N  
Greenville, WI 54942, USA

### Boston

120 Presidential Way, Suite 330  
Woburn, MA 01801, USA

### Chicago

1441 East Business Center Drive  
Mt. Prospect, IL 60056, USA

### Dallas

1825 Lakeway Drive, Suite 600  
Lewisville, TX 75057, USA

### Detroit – Automotive Engineering Center

2601 Cambridge Court, Suite 320  
Auburn Hills, MI 48326, USA

### New York

395 Moreland Road  
Hauppauge, NY 11788, USA

### Silicon Valley

4935 Southfront Road, Suite F  
Livermore, CA 94550, USA

## United States



**USA Headquarters, East:** Festo Corp., 395 Moreland Road, Hauppauge, NY 11788  
Phone: 1.631.435.0800; Fax: 1.631.435.8026;  
Email: [info@festo-usa.com](mailto:info@festo-usa.com) [www.festo.com/us](http://www.festo.com/us)

## Canada



**Headquarters:** Festo Inc., 5300 Explorer Drive, Mississauga, Ontario L4W 5G4  
Phone: 1.905.624.9000; Fax: 1.905.624.9001;  
Email: [festo.canada@ca.festo.com](mailto:festo.canada@ca.festo.com) [www.festo.ca](http://www.festo.ca)

## Mexico



**Headquarters:** Festo Pneumatic, S.A., Av. Ceylán 3, Col. Tequesquahuac,  
54020 Tlalneapantla, Edo. de México  
Phone: 011 52 [55] 53 21 66 00; Fax: 011 52 [55] 53 21 66 65;  
Email: [festo.mexico@mx.festo.com](mailto:festo.mexico@mx.festo.com) [www.festo.com/mx](http://www.festo.com/mx)

## Central USA

Festo Corporation  
1441 East Business  
Center Drive  
Mt. Prospect, IL 60056, USA  
Phone: 1.847.759.2600  
Fax: 1.847.768.9480



## Western USA

Festo Corporation  
4935 Southfront Road,  
Suite F  
Livermore, CA 94550, USA  
Phone: 1.925.371.1099  
Fax: 1.925.245.1286



## Festo Worldwide

Argentina Australia Austria Belarus Belgium Brazil Bulgaria Canada Chile China Colombia Croatia Czech Republic Denmark  
Estonia Finland France Germany Great Britain Greece Hong Kong Hungary India Indonesia Iran Ireland Israel Italy Japan Latvia  
Lithuania Malaysia Mexico Netherlands New Zealand Norway Peru Philippines Poland Romania Russia Serbia Singapore  
Slovakia Slovenia South Africa South Korea Spain Sweden Switzerland Taiwan Thailand Turkey Ukraine United States Venezuela

[www.festo.com](http://www.festo.com)