

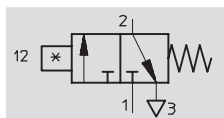
# Proximity sensors SMPO-8E, for T-slot, pneumatic

Technical data

FESTO

Function  
3/2-way valve,  
normally closed

- Pneumatic proximity sensor
- Magnetic measuring principle



Design	
Constructional design	For T-slot
Type of mounting	Via accessories
Connection direction	Lateral
Reproducibility of switching point <sup>1)</sup>	[mm] ±0.1
Switching status display	Optical

1) Only applicable to drives secured against rotation

Technical data	
Switching element function	3/2-way valve, normally closed
Operating medium	Compressed air, filtered, unlubricated, grade of filtration 40µm
Operating pressure	[bar] 2 ... 8
Switch-on time	[ms] 22
Switch-off time	[ms] 52
Pneumatic connection	Female thread M5
Protection class	IP65

Operating and environmental conditions	
Ambient temperature	[°C] -15 ... +60
Corrosion resistance class CRC <sup>1)</sup>	2

1) Corrosion resistance class 2 according to Festo standard 940 070

Components requiring moderate corrosion resistance. Externally visible parts with primarily decorative surface requirements which are in direct contact with a normal industrial environment or media such as coolants or lubricating agents.

Materials	
Housing	Polyamide, aluminium

Product weights [g]	
	12

# Proximity sensors SMPO-8E, for T-slot, pneumatic

Technical data



Dimensions
Download CAD data → [www.festo.com/en/engineering](http://www.festo.com/en/engineering)

1

 Connecting thread M5

2

 Pneumatic indicator

3

 Mounting screw

4

 Mounting kit SMB-8E

Ordering data			
		Part No.	Type
	Pneumatic connection		
	3/2-way valve, normally closed		
	Female thread M5	178 563	SMPO-8E