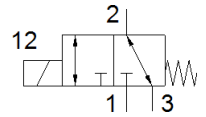
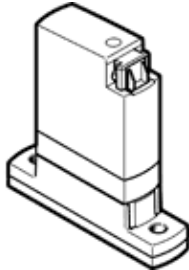


media separated solenoid valve VYKA-F7-M32-12-D2-PV-5YQ7

FESTO

料號: 8114565
將停止供貨的產品

Type to be discontinued. Available until 2023. See Support Portal for alternative products.



技術參數

特性	值
設計結構	Rocker valve with diaphragm seal
密封原理	軟性
材料與介質接觸	FPM PEEK
Food-safe	See Supplementary material information
閥功能	3/2 常開/常閉, 單穩態
額定尺寸	1.2 mm
流量方向	一定條件下可逆
驅動類型	電動
嚮導類型	直接
復位類型	機械彈簧
手動控制	無
裝配位置	任何
安裝類型	With through-hole for M2 screw
Electrical connection 1, connection type	插頭插座
Electrical connection 1, connection technology	Connection pattern Q7
Electrical connection 1, number of pins/wires	2
尺寸	7
網柵尺寸	7.5 mm
Fluid connection	法蘭
介質	流體介質 氣態介質
Note on the medium	Observe resistance of materials that come into contact with media Maximum particle size: 5 µm
Internal volume	16 µl fluid space valve 26 µl valve with fluid connections
液體介質的溫度	0 ... 50 °C
Temperature of gaseous media	0 ... 50 °C
環境溫度	0 ... 50 °C
儲藏溫度	-20 ... 70 °C
Pressure of medium	0 ... 0.2 MPa
操作壓力	0 ... 2 bar
Pressure of medium psi	0 ... 29 psi
Note on pressure of medium	COM:0-2/0-0,2/0-29 NC:0-1/0-0,1/0-14,5 NO:0-1/0-0,1/0-14,5
Burst pressure	2.3 MPa
爆破壓力	23 bar
Burst pressure	333.5 psi
工作電壓範圍 DC	12 ... 26 V
Note on operating voltage range DC	With electrical E-box VAVE-K1-...
容許的電壓波動	+/- 10 %
電源消耗	3.5 W

特性	值
耗電量資訊	Low-current phase 0.3 W, high-current phase 3.5 W for 60 ms, in combination with VAVE-K1-...
線圈的特性參數	12 - 26 V DC: low-current phase 0.06 W, high-current phase 2.2 W
絕緣等級	B
循環功率	100% with holding current reduction 操作電磁閥的觀察注意事項
最大切換頻率	6 Hz
Note on switching frequency	Dependent on the ambient temperature and installation state For 100% duty cycle, dependent on the ambient temperature and installation state
對於液態介質的反應時間 "開"	4 ms
Switching time on gaseous media	4 ms
對於液態介質的反應時間 "關"	6 ms
Switching time off gaseous media	5 ms
標準額定流量	11 l/min
Information on standard nominal flow rate	In case of a pressure drop of 1 -> 0 bar (gaseous media)
流量 Kv	0.021 m ³ /h
Flow rate Kv (l/min)	0.35 l/min
Information on flow rate Kv	For water as medium Pressure difference 1 bar
Water flow rate at max. operating pressure	0.03 m ³ /h 0,5 l/min
Material housing	PA-加強 PEEK PPA 增強型
Material membrane	FPM
Material seals	FPM
材料備註	符合 RoHS
PWIS conformity	VDMA24364 zone III
產品重量	10.9 g
防護等級	IP40
Note on degree of protection	裝配狀態
Instructions for use	For indoor use only
耐腐蝕等級 CRC	0 - No corrosion stress