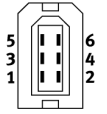
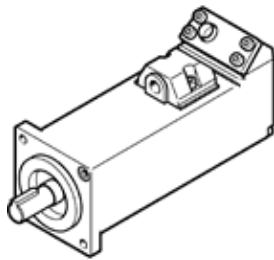


伺服馬達

EMMB-AS-80-07-S30SB

料號: 8097188

FESTO



技術參數

| 特性 | 值 |
|---|---|
| 環境溫度 | -15 ... 40 °C |
| Note on ambient temperature | Up to 60° C with derating of -1.5% per degree Celsius |
| Max. installation height | 4,000 m |
| Note on max. installation height | As of 1,000 m, only with derating of -1.0% per 100 m |
| 儲藏溫度 | -20 ... 55 °C |
| 相對空氣濕度 | 0 - 90 % |
| 符合標準 | IEC 60034 |
| 根據EN60034-1的熱量等級 | F |
| Max. winding temperature | 155 °C |
| 根據EN60034-1的速率等級 | S1 |
| 溫度監控 | Digital motor temperature transmission via Nikon A format |
| Motor type to EN 60034-7 | IM B5 IM V1 IM V3 |
| 裝配位置 | 任何 |
| 防護等級 | IP65 |
| Note on degree of protection | IP40 motor shaft without RWDR IP54 motor shaft with rotary shaft seal IP65 motor housing without connection |
| Concentricity, coaxiality, axial runout to DIN SPEC 42955 | N |
| Balance quality | G 2,5 |
| Storage lifetime under nominal conditions | 20,000 h |
| Electrical connection 1, connection type | 插頭 |
| Electrical connection 1, connection technology | Connection pattern RE |
| Electrical connection 1, number of pins/wires | 6 |
| 污染程度 | 2 |
| 材料備註 | 符合 RoHS |
| 耐腐蝕等級 CRC | 0 - No corrosion stress |
| PWIS conformity | VDMA24364 zone III |
| 耐振動 | 傳送應用測試在安全等級 2 符合 FN 942017-4 及 EN 60068-2-6 |
| 耐衝擊 | Shock test with severity level 2 in accordance with FN 942017-5 and EN 60068-2-27 |
| 授權 | c UL us - Recognized (OL) |
| CE 符號 (參見符合的標準) | 根據 EU-EMV 指導原則 根據 EU 低電壓設備指導原則 in accordance with EU RoHS directive |
| UKCA marking (see declaration of conformity) | To UK instructions for electrical equipment To UK instructions for EMC To UK RoHS instructions |
| 認證核發部門 | UL E342973 |
| 額定工作電壓 DC | 300 V |
| 額定電壓 DC | 300 V |
| Type of winding switch | Star inside |
| Number of pole pairs | 3 |
| 靜止扭矩 | 2.63 Nm |
| 額定扭矩 | 2.39 Nm |

| 特性 | 值 |
|---|------------------------------|
| 峰值 (最大) 扭矩 | 7.17 Nm |
| 額定擺動速度 | 3,000 1/min |
| 最高速度 | 5,000 1/min |
| Max. mechanical speed | 10,000 1/min |
| 額定馬達功率 | 750 W |
| 連續的開路電流 | 4.2 A |
| 額定馬達電流 | 3.8 A |
| 峰值 (最大) 電流 | 11.4 A |
| 馬達恆定 | 0.662 Nm/A |
| Voltage constant, phase-to-phase | 40 mVmin |
| Phase-phase winding resistance | 2.1 Ohm |
| Phase-phase winding inductance | 10.5 mH |
| Electric time constant | 5 ms |
| Measuring flange | 255 x 255 x 8, aluminium |
| 斷電時轉動慣量總和 | 0.978 kgcm ² |
| 產品重量 | 3,400 g |
| 容許的軸向驅動軸負載 | 167.5 N |
| 容許的徑向軸負載 | 335 N |
| 轉子位置感測器 | Absolute single turn encoder |
| Rotor position sensor, manufacturer designation | SAR-ML50AJC00 |
| Rotor position sensor, absolute detectable revolutions | 1 |
| Rotary position encoder interface | Nikon A format |
| Rotary position encoder measuring principle | 光學 |
| Rotor position sensor, DC operating voltage | 5 V |
| Rotor position sensor, DC operating voltage range | 4.75 ... 5.25 V |
| Rotor position sensor, position values per revolution | 1,048,576 |
| 轉子位置編碼器起動裝置 | 20 Bit |
| Rotor position sensor, system accuracy of angle measurement | -120 ... 120 arcsec |
| 剎車保持扭矩 | 3.2 Nm |
| 制動裝置的DC工作電壓 | 24 V |
| 制動裝置的電力消耗 | 11.5 W |
| Energy efficiency | ENEFF (CN) / Class 2 |