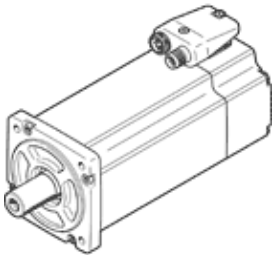


伺服馬達 EMME-AS-80-M-HS-AMX

料號: 4267592
將停止供貨的產品

不具傳動裝置, 不具制動。

FESTO



技術參數

特性	值
環境溫度	-10 ... 40 °C
儲藏溫度	-20 ... 70 °C
相對空氣濕度	0 - 90 %
符合標準	IEC 60034
絕緣保護等級	F
根據EN60034-1的速率等級	S1
防護等級	IP21
電接頭系統	插頭
材料備註	符合 RoHS
耐腐蝕等級 CRC	0 - No corrosion stress
PWIS conformity	VDMA24364 zone III
授權	RCM Mark c UL us - Recognized (OL)
CE 符號 (參見符合的標準)	根據 EU-EMV 指導原則 根據 EU 低電壓設備指導原則 in accordance with EU RoHS directive
UKCA marking (see declaration of conformity)	To UK instructions for electrical equipment To UK instructions for EMC To UK RoHS instructions
額定工作電壓 DC	565 V
額定電壓 DC	565 V
Type of winding switch	Star inside
Number of pole pairs	3
靜止扭矩	3.5 Nm
額定扭矩	3.2 Nm
峰值 (最大) 扭矩	14 Nm
額定擺動速度	3,000 1/min
最高速度	4,097 1/min
額定馬達功率	1,000 W
連續的開路電流	2.2 A
額定馬達電流	2.1 A
峰值 (最大) 電流	8.8 A
馬達恆定	1.524 Nm/A
Voltage constant, phase-to-phase	97.5 mVmin
Phase-phase winding resistance	9 Ohm
Phase-phase winding inductance	22.8 mH
斷電時轉動慣量總和	1.93 kgcm ²
產品重量	3,700 g
容許的軸向驅動軸負載	72 N
容許的徑向軸負載	360 N
轉子位置感測器	Safety Enc. absolut multi turn
Rotary position encoder interface	HIPERFACE®
Rotary position encoder measuring principle	光學
Rotor position encoder, sinusoidal/cosinusoidal periods per revolution	128

特性	値
Rotor position encoder, typical resolution	15 Bit
Rotor position encoder, typical angular accuracy	20 arcmin
Safety Integrity Level (SIL), component parts	SIL 2, rotor position encoder SILCL 2, rotor position encoder
Performance Level (PL), component parts	Category 3, Performance Level d, rotor position encoder
PFHd, component parts	$1.3 \times 10E-8$, rotor position encoder
Duration of use Tm, component parts	20 years, rotor position encoder
MTTFd, subcomponent	874 years, rotor position encoder
Energy efficiency	ENEFF (CN) / Class 2