

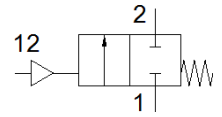
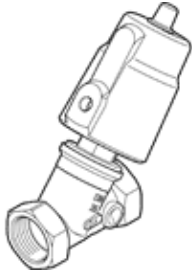
角座閥

VZXF-L-M22C-M-A-G1-230-M1-H3B1T-50-16

料號: 3535664

FESTO

Pneumatically actuated angle seat valve in red brass. Over seat version, safety position closed, G thread, nominal width 1".



技術參數

| 特性 | 值 |
|--|---------------------------------------|
| 設計結構 | Poppet valve with piston actuator |
| 驅動類型 | 氣壓 |
| 密封原理 | 軟性 |
| 裝配位置 | 任何 |
| 安裝類型 | 線路安裝 |
| Line connection | G1 threaded collar to DIN ISO 228 |
| 額定尺寸 | 23 mm |
| 閥功能 | 2/2 常閉, 單穩態 |
| 流量方向 | 不可逆 |
| Pressure of medium | 0 ... 1.6 MPa |
| 操作壓力 | 0 ... 16 bar |
| 製程閥的額定壓力 | 16 |
| 排氣功能 | 不可節流 |
| 復位類型 | 機械彈簧 |
| 嚮導類型 | 具外部控制 |
| 氣壓連接 | 內螺紋 G1/8 |
| Operating pressure MPa | 0.6 ... 1 MPa |
| 操作壓力 | 6 ... 10 bar |
| Operating pressure | 87 ... 145 psi |
| 介質 | Vapour 惰性氣體 過濾壓縮空氣, 過濾等級 200 µm |
| Flow direction | Above valve seat, for gaseous media |
| 操作介質 | 壓縮空氣符合 ISO8573-1:2010 [7:4:4] |
| 最大粘度 | 600 mm ² /s |
| 介質溫度 | -40 ... 200 °C |
| 環境溫度 | -10 ... 60 °C |
| 流量 Kv | 10.8 m ³ /h |
| 材料備註 | 符合 RoHS |
| PWIS conformity | VDMA24364 zone III |
| Material process valve housing | 青銅色 (紅色黃銅) |
| Material number, process valve housing | CC499K |
| Material spindle seal | PTFE |
| Material seat seal | PTFE |
| 產品重量 | 1,500 g |
| 耐腐蝕等級 CRC | 1 - Low corrosion stress |
| Material drive housing | 黃銅 |