

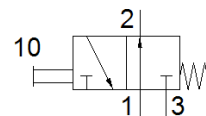
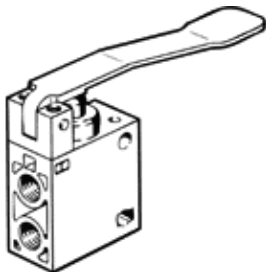
Finger lever valve THO-3-1/4-B

Part number: 8990

FESTO

Normally open

This type is suitable for vacuum.



Data sheet

Feature	Value
Valve function	3/2 open, monostable
Standard nominal flow rate	600 l/min
Working pressure	-0.95 ... 10 bar
Design structure	Poppet seat
Nominal size	7 mm
Type of piloting	direct
PWIS conformity	VDMA24364-B1/B2-L
Ambient temperature	-10 ... 60 °C
Actuating force	22.5 N
Product weight	210 g
Mounting type	with through hole
Pneumatic connection, port 1	G1/4
Pneumatic connection, port 2	G1/4
Pneumatic connection, port 3	G1/4
Material seals	NBR
Material housing	Aluminum die cast