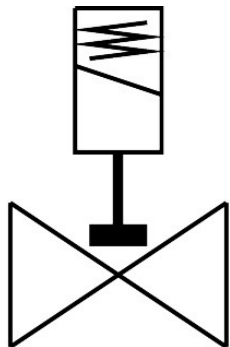
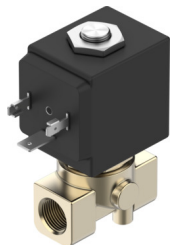


Solenoid valve

VZWD-B-L-M22C-M-N14-40-V-30-2A-A1-8

Part number: 8214642

FESTO



Data sheet

| Feature | Value |
|----------------------------------|--|
| Structural design | Directly controlled poppet valve |
| Actuation type | Electrical |
| Sealing principle | Soft |
| Mounting position | Any |
| Type of mounting | Line installation |
| Fitting connection | 1/4 NPT |
| Electrical connection | Form A Plug as per EN 175301-803 Rectangular design |
| Nominal width | 4 mm |
| Valve function | 2/2, closed, monostable |
| Manual override | None |
| Flow direction | Non-reversible |
| Medium | Compressed air as per ISO 8573-1:2010 [7:4:4] Inert gas Mineral oil Water Neutral liquids Other flow media on request |
| Pressure difference | 0 MPa 0 psi |
| Differential pressure | 0 bar |
| Coil characteristics | 110 V AC: 50/60 Hz, pick-up power 20.0 VA, holding power 15.0 VA |
| Insulation class | F |
| Permissible voltage fluctuations | +15 % / -10 % |
| Duty cycle | 100% |
| Reset method | Mechanical spring |
| Type of control | Direct |

| Feature | Value |
|--|--|
| Medium pressure | 0 MPa...0.8 MPa 0 bar...8 bar 0 psi...116 psi |
| Max. viscosity | 25 mm ² /s |
| Temperature of medium | -10 °C...140 °C |
| Ambient temperature | -10 °C...80 °C |
| Flow rate Kv | 0.36 m ³ /h |
| On switching time | 8 ms |
| Switching time off | 25 ms |
| Note on materials | RoHS-compliant |
| Housing material | Brass |
| Material number of housing | CW617N |
| Seals material | FPM |
| Product weight | 300 g |
| CE marking (see declaration of conformity) | As per EU EMC directive As per EU low voltage directive As per EU RoHS directive |
| UKCA marking (see declaration of conformity) | To UK instructions for EMC To UK RoHS instructions To UK instructions for electrical equipment |
| Degree of protection | IP65 |
| Corrosion resistance class (CRC) | 1 - Low corrosion stress |