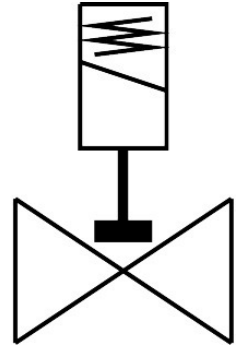
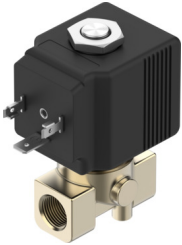


# Solenoid valve

## VZWD-B-L-M22C-M-N14-15-V-36-2A-A1-80

Part number: 8214503

FESTO



### Data sheet

| Feature                          | Value  |
|----------------------------------|--|
| Structural design                | Directly controlled poppet valve   |
| Actuation type                   | Electrical   |
| Sealing principle                | Soft   |
| Mounting position                | Any  |
| Type of mounting                 | Line installation  |
| Fitting connection               | 1/4 NPT  |
| Electrical connection            | Form A<br>Plug<br>as per EN 175301-803<br>Rectangular design   |
| Nominal width                    | 1.5 mm   |
| Valve function                   | 2/2, closed, monostable  |
| Manual override                  | None   |
| Flow direction                   | Non-reversible   |
| Medium                           | Compressed air as per ISO 8573-1:2010 [7:4:4]<br>Inert gas<br>Mineral oil<br>Water<br>Neutral liquids<br>Other flow media on request |
| Pressure difference              | 0 MPa<br>0 psi   |
| Differential pressure            | 0 bar  |
| Coil characteristics             | 110 V AC: 50/60 Hz, pick-up power 40.0 VA, holding power 30.0 VA   |
| Insulation class                 | H  |
| Permissible voltage fluctuations | +15 % / -10 %  |
| Duty cycle                       | 100%   |
| Reset method                     | Mechanical spring  |
| Type of control                  | Direct   |

| Feature                                      | Value  |
|--|--|
| Medium pressure                              | 0 MPa...8 MPa<br>0 bar...80 bar<br>0 psi...1160 psi  |
| Max. viscosity                               | 25 mm <sup>2</sup> /s  |
| Temperature of medium                        | -10 °C...140 °C  |
| Ambient temperature                          | -10 °C...80 °C   |
| Flow rate Kv                                 | 0.07 m <sup>3</sup> /h   |
| On switching time                            | 8 ms   |
| Switching time off                           | 25 ms  |
| Note on materials                            | RoHS-compliant   |
| Housing material                             | Brass  |
| Material number of housing                   | CW617N   |
| Seals material                               | FPM  |
| Product weight                               | 380 g  |
| CE marking (see declaration of conformity)   | As per EU EMC directive<br>As per EU low voltage directive<br>As per EU RoHS directive               |
| UKCA marking (see declaration of conformity) | To UK instructions for EMC<br>To UK RoHS instructions<br>To UK instructions for electrical equipment |
| Degree of protection                         | IP65   |
| Corrosion resistance class (CRC)             | 1 - Low corrosion stress   |