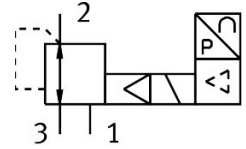


Pressure regulator MS9-LR-G-PE10-VS

Part number: 8203866

FESTO



Data sheet

Feature	Value
Size	9
Series	MS
Mounting position	Any
Structural design	Pilot-controlled piston control valve
Controller function	Outlet pressure constant With primary pressure compensation With secondary exhausting
Operating pressure	6 bar...11 bar
Pressure regulation range	0.1 bar...10 bar
Max. pressure hysteresis	0.05 bar
DC operating voltage range	21.6 V...26.4 V
Max. electrical power consumption	4.2 W
Max. current consumption	0.16 A
Nominal operating voltage DC	24 V
Residual ripple	10 %
Analog input signal range	0 - 10 V
Operating medium	Compressed air as per ISO 8573-1:2010 [7:4:4] Inert gas
Information on operating and pilot media	Operation with oil lubrication not possible
Corrosion resistance class (CRC)	2 - Moderate corrosion stress
LABS (PWIS) conformity	VDMA24364-B1/B2-L
Storage temperature	-10 °C...60 °C
Temperature of medium	10 °C...50 °C
Ambient temperature	0 °C...60 °C
Product weight	1400 g
Type of mounting	Optionally: Line installation With accessories
Covering material	PA-reinforced
Note on materials	RoHS-compliant
Material of sub-base	Die-cast aluminum
Material of mounting bracket	Die-cast aluminum
Housing material	Die-cast aluminum

Feature	Value
Module connector material	Die-cast aluminum
Diaphragm material	NBR
Valve tappet material	Wrought aluminum alloy NBR POM